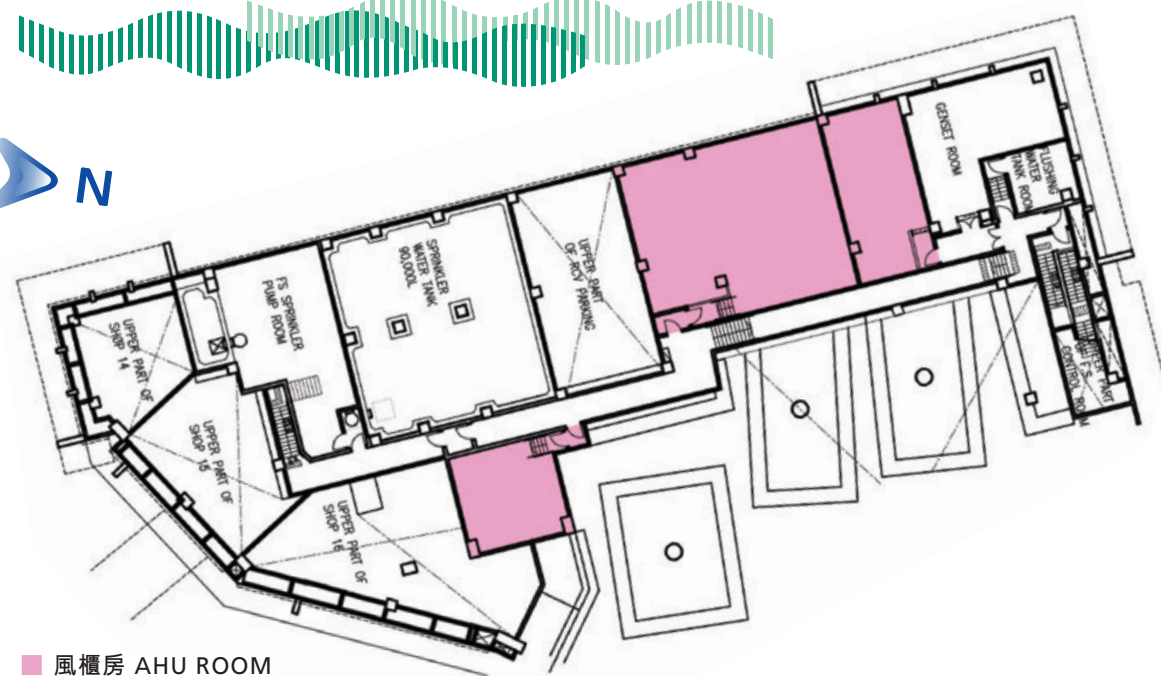






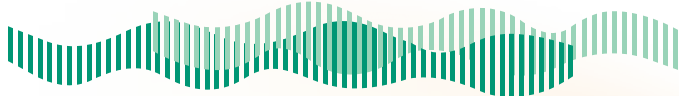


街市夾層平面圖  
Wet Market Mezzanine Floor Plan



■ 風櫃房 AHU ROOM

地下平面圖 Ground Floor Plan

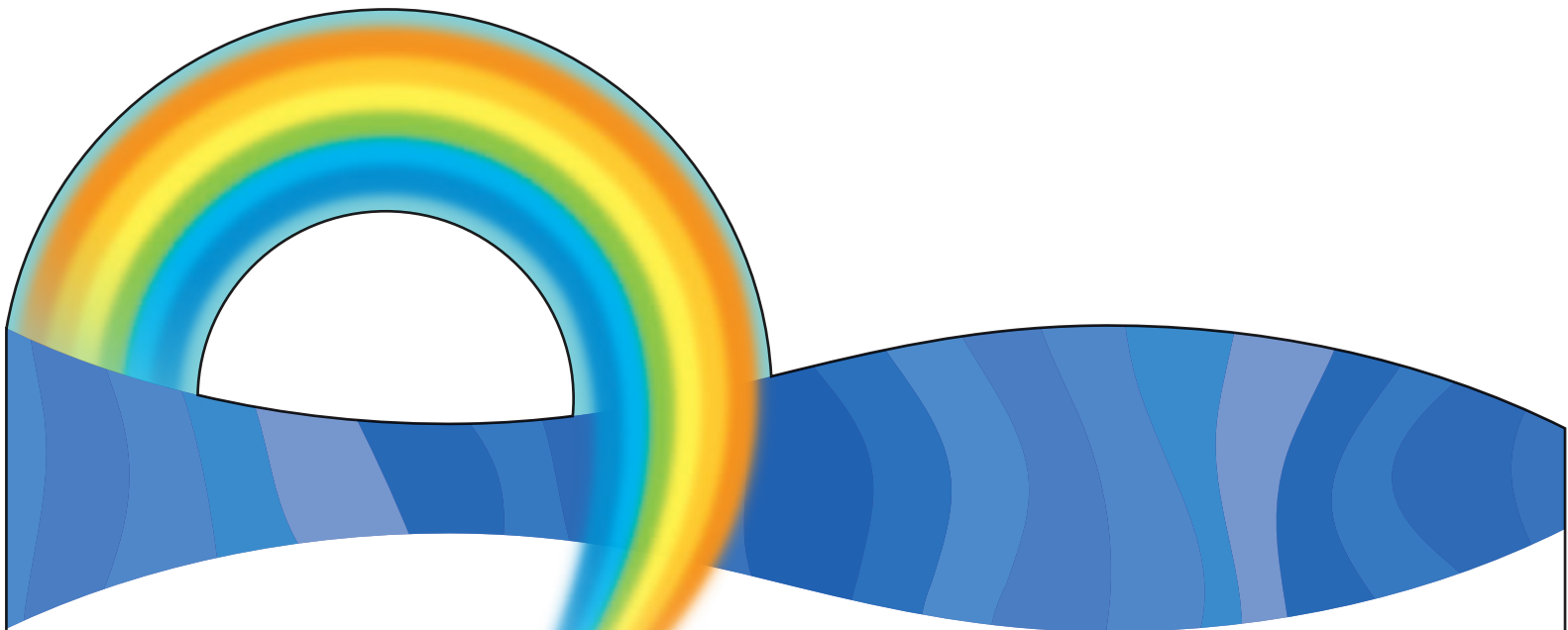


商業設施的佈局設計及舖位面積或會更改，視乎獨立審查組最後驗收的結果而定。香港房屋委員會保留作出任何修訂的權利。  
The layout of the shopping facilities and area of shop premises are subject to changes, i.e. final acceptance by Independent Checking Unit and HKHA reserves the right to make any necessary amendment.



商舖編號 Shop No.	室內樓面面積 (平方米) IFA (m <sup>2</sup> )	行業 Trade
1	214	飲食 Food
2	256	飲食 Food
3	68	飲食 Food
4	624	超級市場 Supermarket
5	14	零售 / 服務 Retail
6	24	零售 / 服務 Retail
7	18	零售 / 服務 Retail
8	43	零售 / 服務 Retail
9	43	零售 / 服務 Retail
10	41	零售 / 服務 Retail
11	41	零售 / 服務 Retail
12	50	零售 / 服務 Retail
13	32	零售 / 服務 Retail
14	47	零售 / 服務 Retail
15	73	零售 / 服務 Retail
16	106	零售 / 服務 Retail
17	33	零售 / 服務 Retail
18	87	零售 / 服務 Retail
街市 Market		1200 整體出租街市 Single Operator Market





**迎東商場** 位於大嶼山東涌地段第56區，除商場部份外，整個發展項目亦包括迎東邨4座住宅樓宇，提供3,580個出租公屋單位，完成後人口料達約一萬人。整個發展項目預計於2018年年內可供入住。迎東商場設有18個商舖及一個整體出租街市，可供出租面積接近三千平方米，商場部份預計會與住宅樓宇同期落成以交付予商戶。迎東商場內的大小商舖，適合經營各種行業如餐廳、超級市場、便利店、藥房、醫務診所等，為屋邨居民提供日常零售服務。

**Ying Tung Shopping Centre** is located at Tung Chung Area 56 on Lantau Island. Apart from the shopping centre, the development project consists of a housing estate comprising 4 domestic blocks – Ying Tung Estate. The whole project will provide 3,580 public rental housing flats and is expected to accommodate a population of about 10,000 persons upon completion. The project is expected to be available for intake in 2018. The shopping centre will provide 18 shops and a Single Operator Market with a total lettable area of about 3,000 square metres. It is expected to be completed at the same time with the domestic blocks for handing over to the commercial tenants. The commercial premises in Ying Tung Shopping Centre will be offered in various sizes and suitable for the operation of different trades, such as cafe, supermarket, convenience store, pharmacy, medical clinic, etc., for providing daily retail service to the residents.

位置圖 Location Map

