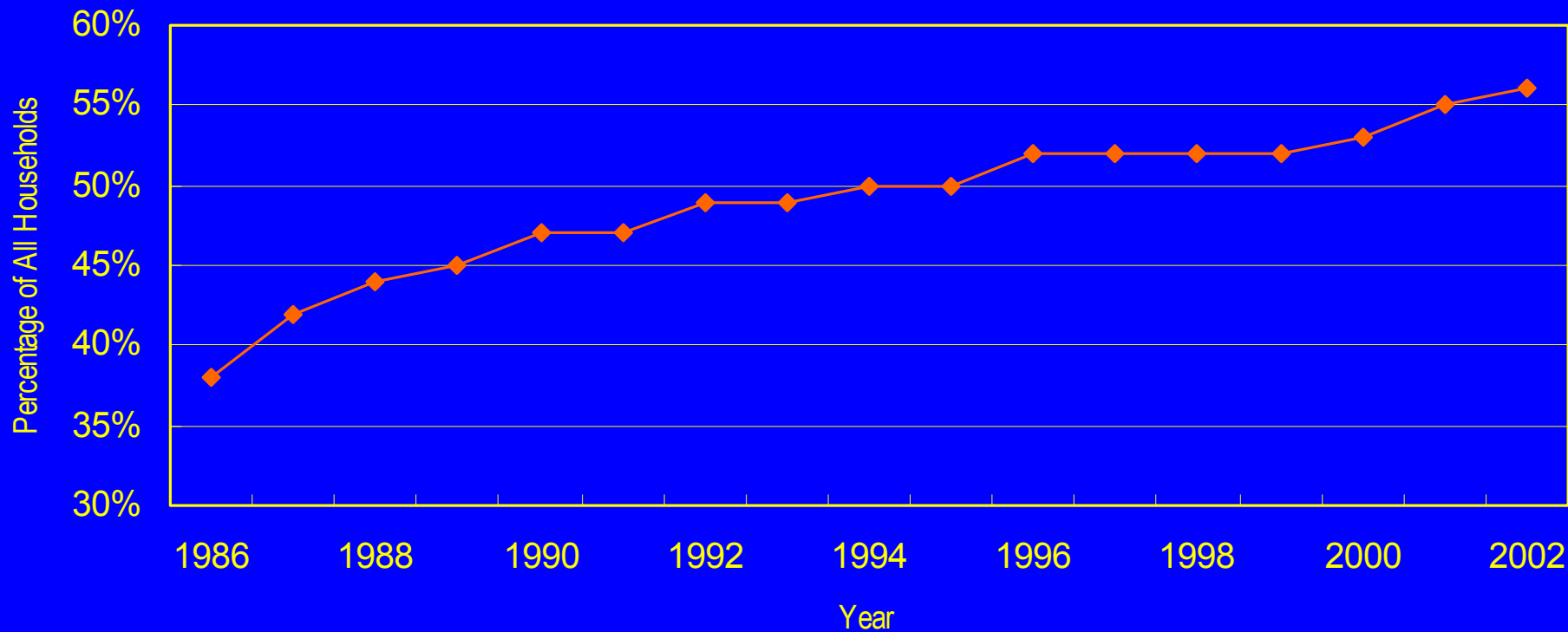


Hong Kong Market Development Trends

Louis Loong

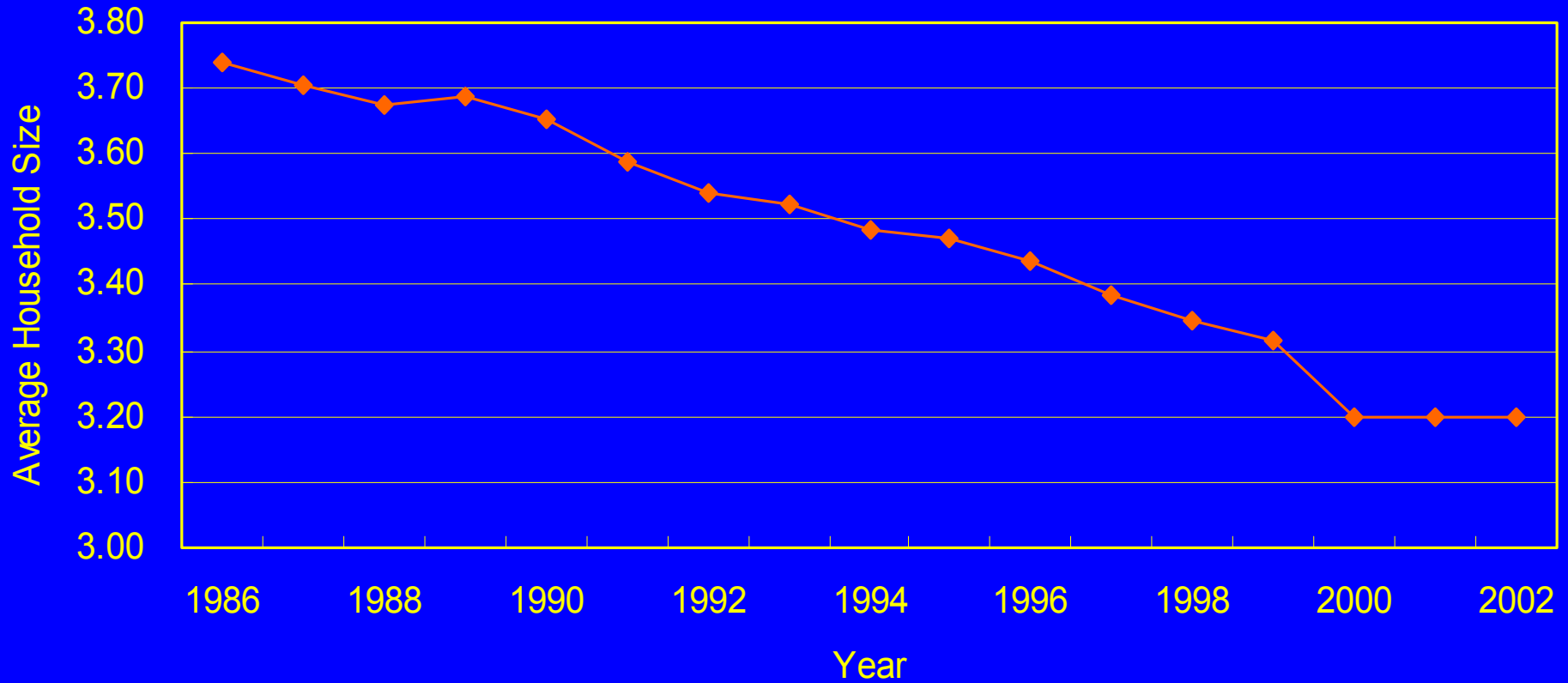
The Real Estate Developers Association of Hong Kong

Home Ownership Rates



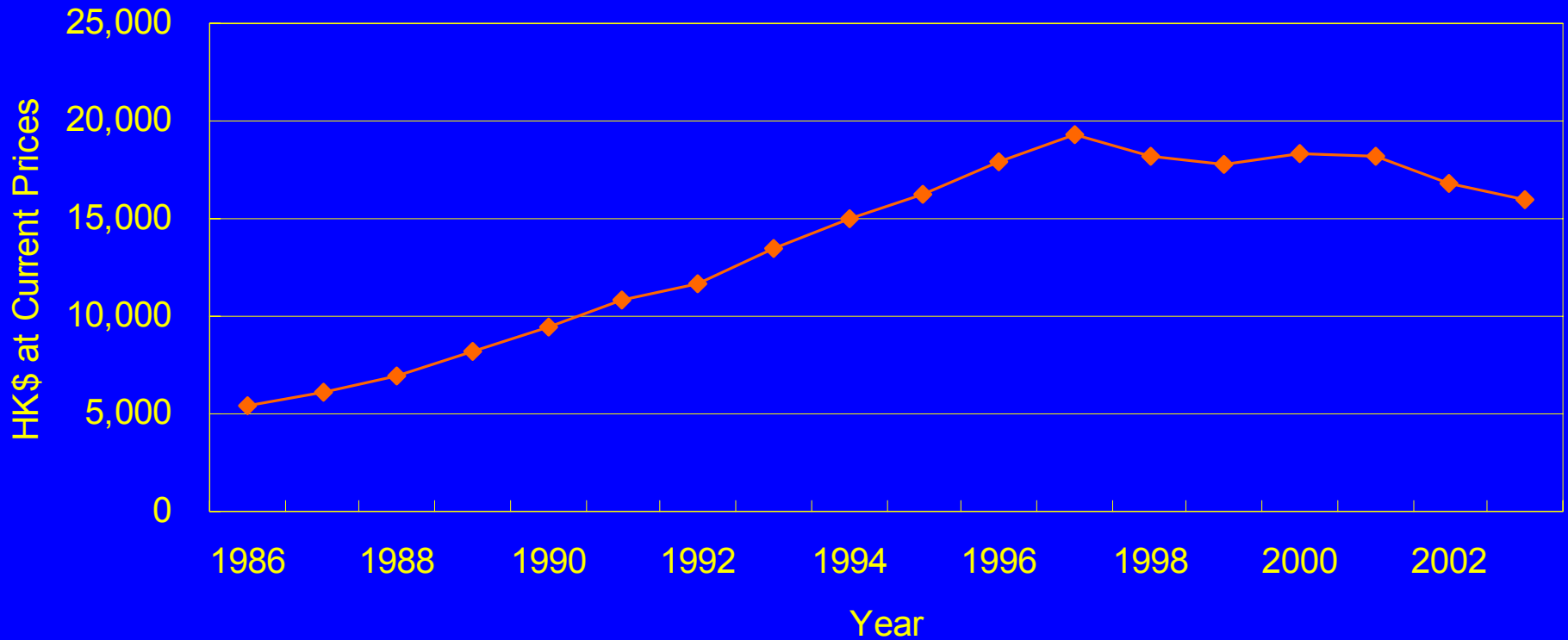
Source: Housing Department

Average Household Size



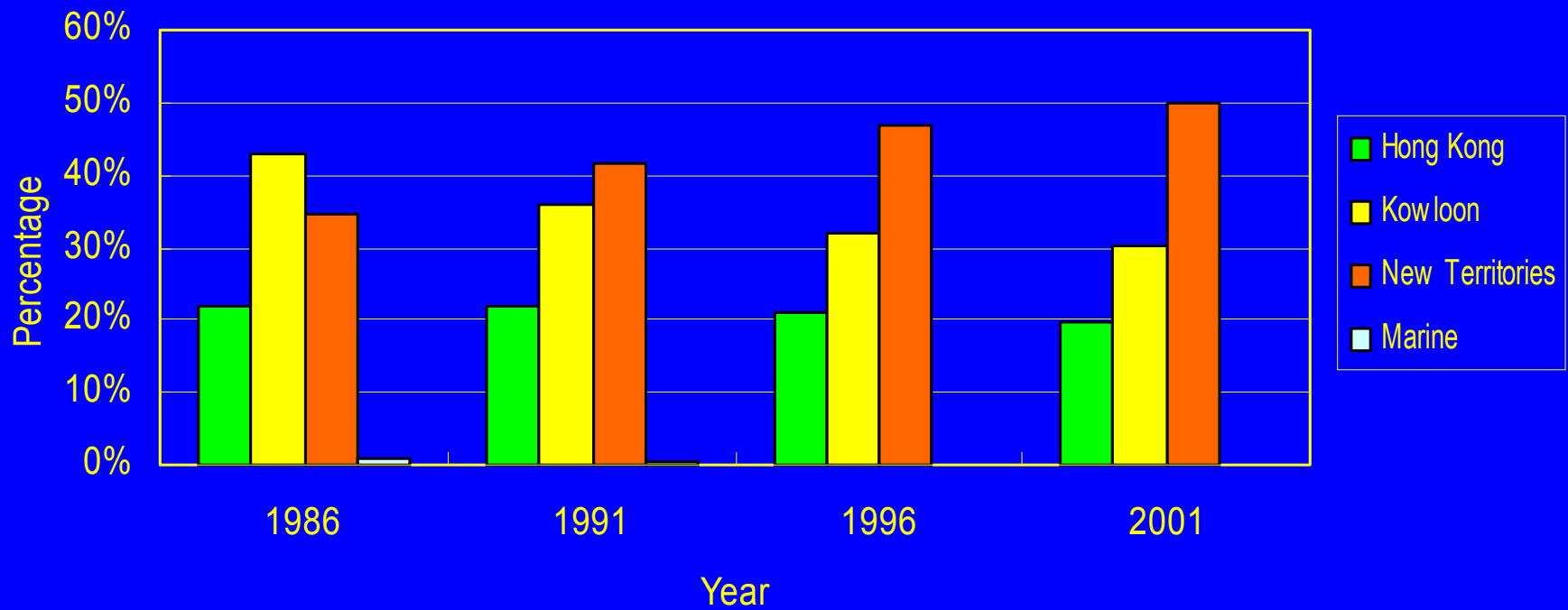
Source: Census and Statistics Department

Median Monthly Household Income



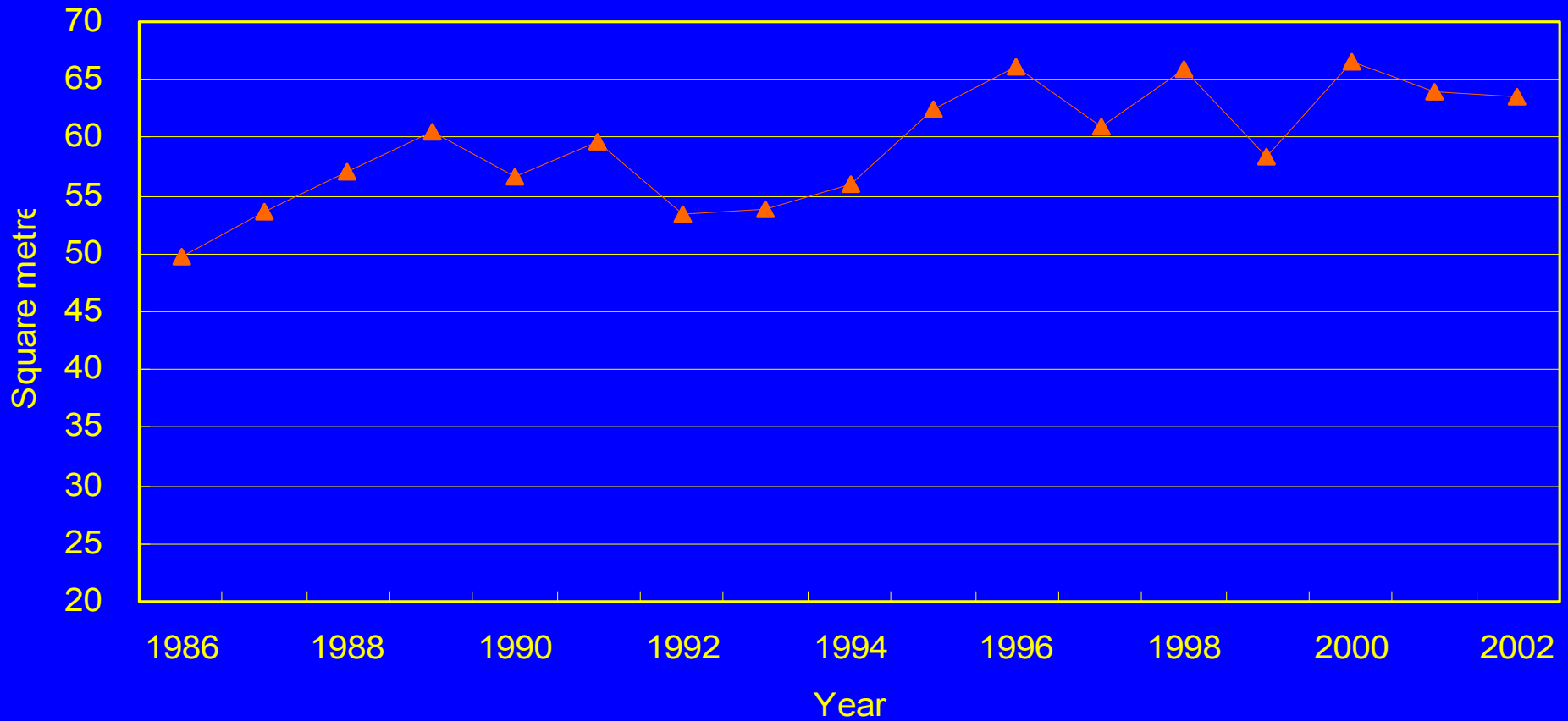
Source: Census and Statistics Department

Geographical Distribution of Population



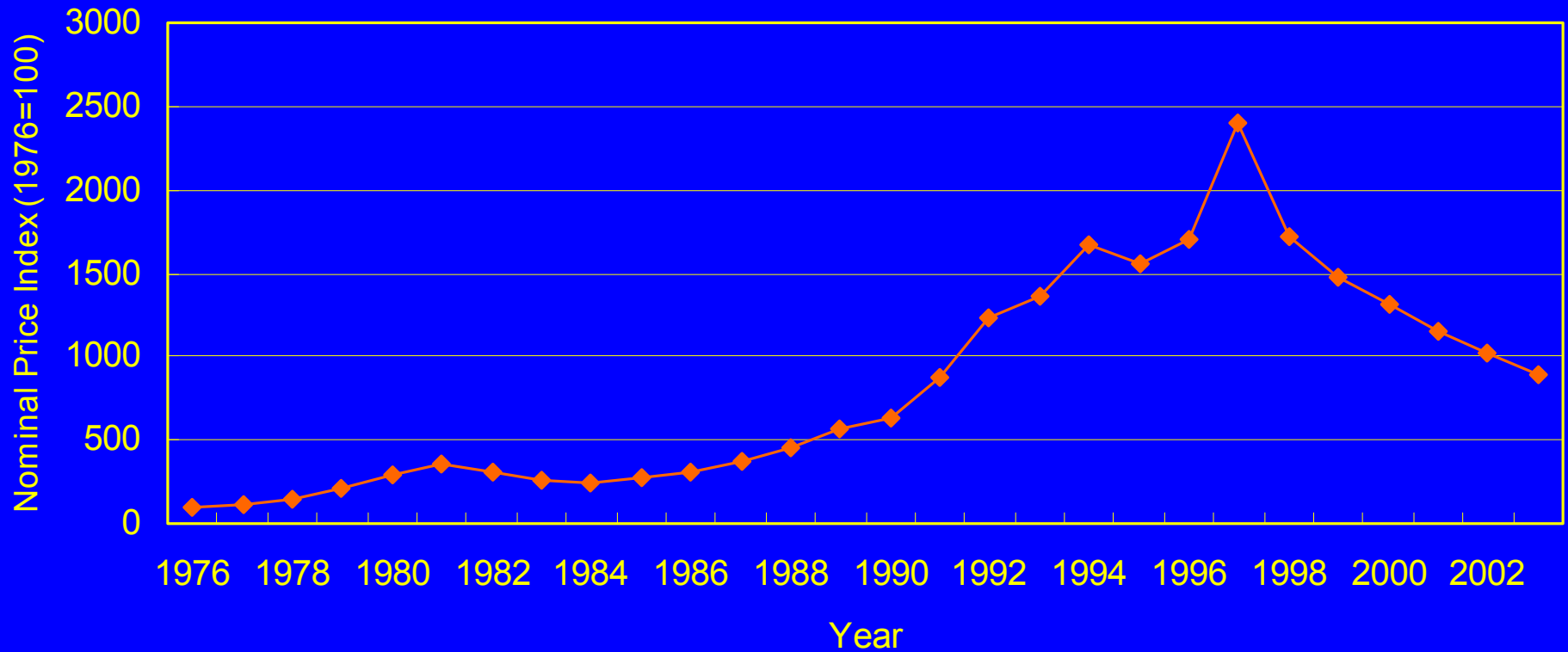
Source: Census and Statistics Department

Average Size of Private Domestic Units Completed in the Year



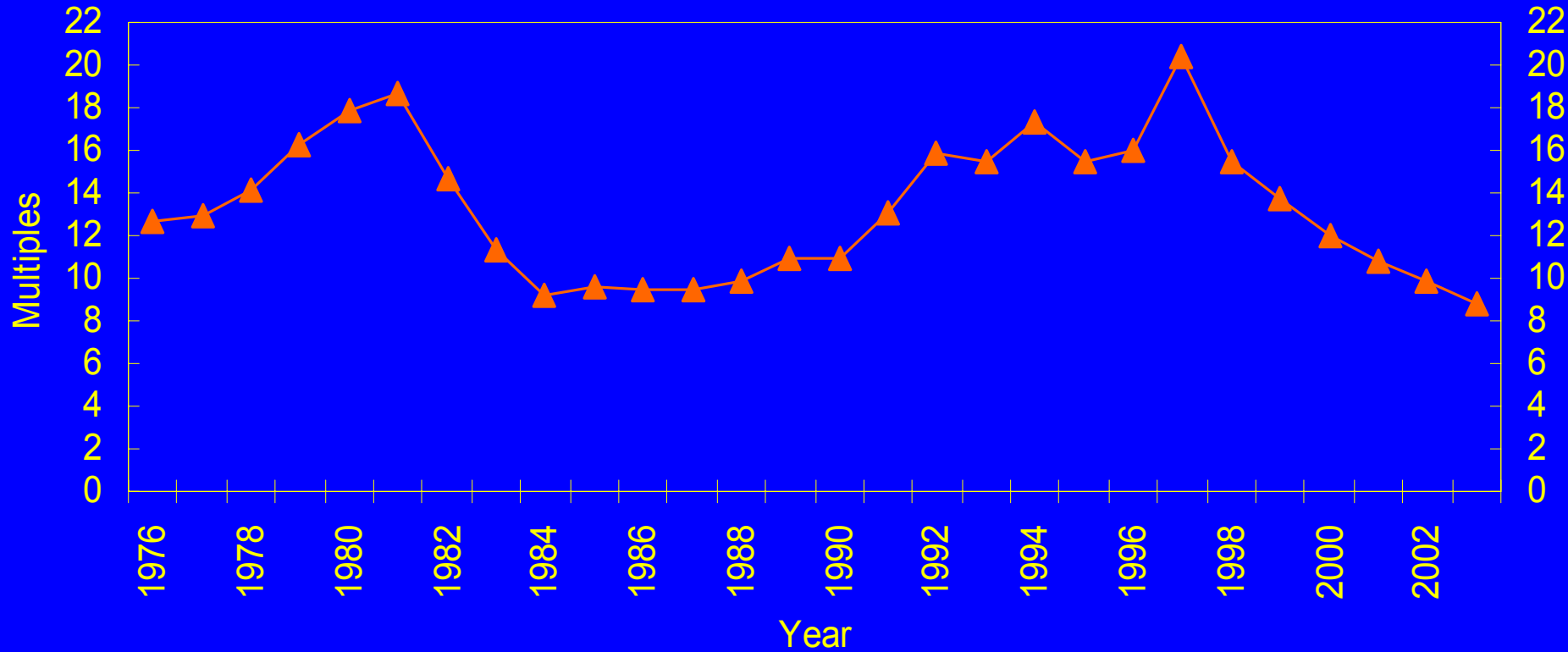
Source: Compiled by REDA from R&V's data

Nominal Price Index of All Classes of Private Domestic Units



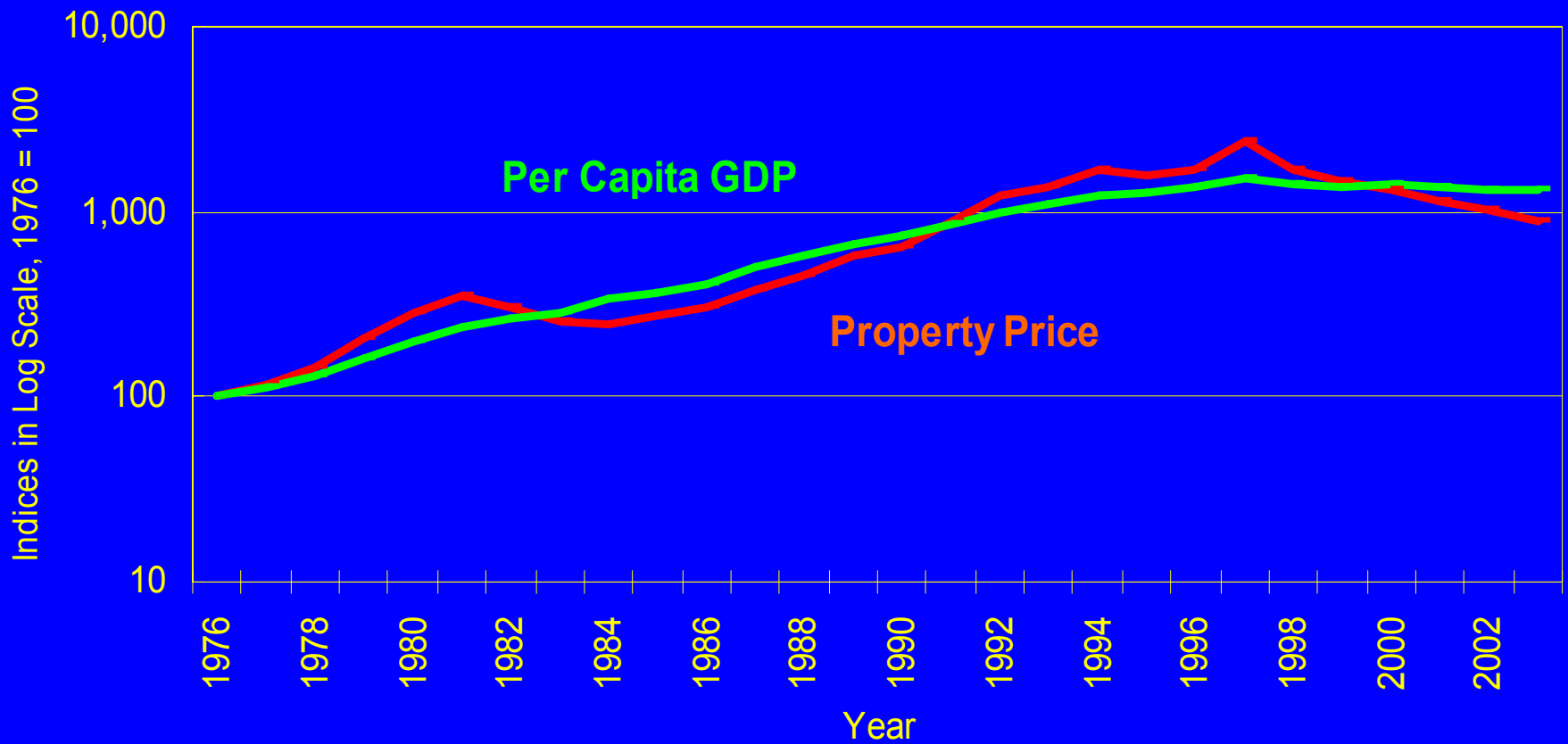
Source: Rating and Valuation Department

Property Price-to-Per Capita GDP Ratio (Multiples)



Sources: Census and Statistics Department, Rating and Valuation Department

Property Price & Per Capita GDP Indices (Indices in Log Scale, 1976 = 100)



Sources: Census and Statistics Department, Rating and Valuation Department

Early 1980s

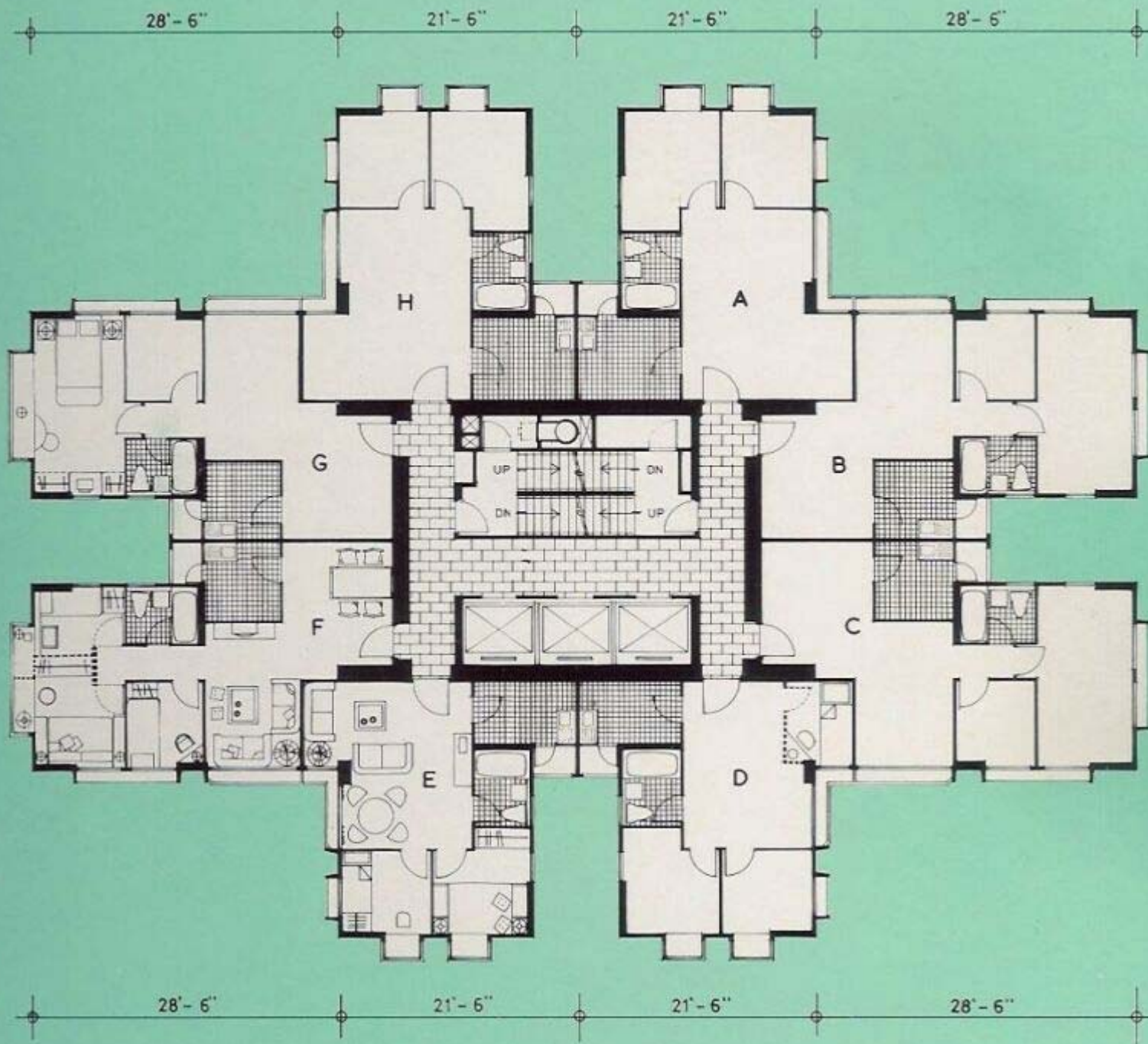




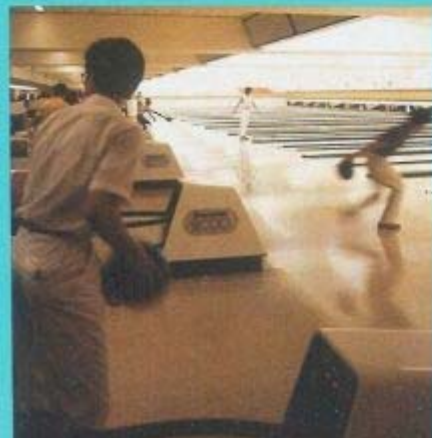
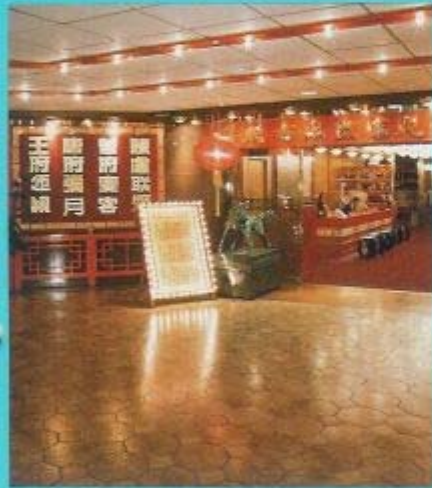
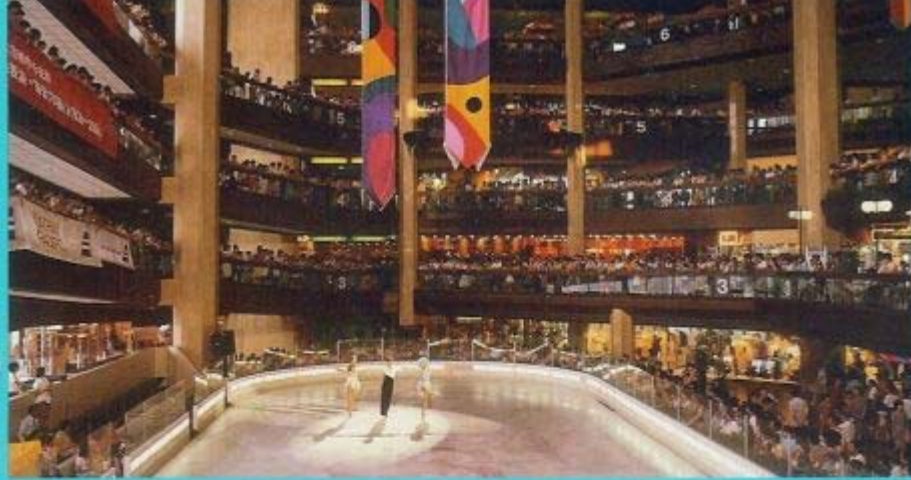
- ON SALE 現售
- ★ SALES OFFICE 售樓處
- ☆ SHOW FLAT 示範單位
- SOLD 已售
- FUTURE OPEN SPACE 遊憩地方



Subject to final amendment without prior notice 如有任何更改，恕不另行通告









太古城中心，近在咫尺，超過100家商店、超級市場、鮮肉蔬果市場、精品店、書店、銀行，應有盡有。另外太古城內，更是各式商店俱備，購物極為方便。太古城中心第二期亦在計劃興建中。

娛樂消閒設備，也是數之不盡，兩所戲院、溜冰場、雪櫃場、三十四線的保齡球場、網球場、兒童遊樂場和休憩亭園，為你提供一切康樂享受。

東海閣住客更可享受設於平台花園上的游泳池及兒童池，兼備更衣及花灑設施。太古城中有中小學，為居民提供七千學位。城內更有幼稚園、幼兒中心、芭蕾舞、音樂及美術學院。

Cityplaza is right in the heart of Taikoo Shing with over 100 shops of all descriptions to provide a wide variety of shopping to meet every need. Supermarkets, fresh meat and vegetable markets, boutiques, book-stores, banks are all there. In addition there is a wide range of local shopping throughout the estate. Phase two of Cityplaza is now being planned.

Recreation and entertainment facilities are numerous. Two cinemas, an ice-skating rink, a roller skating rink, 34-lane bowling alley, several 'adventure' playgrounds for children, tennis courts are all only a short walk from the comfort of your home. Residents of Tung Hoi Mansion can also enjoy a full size swimming pool and a children's pool on the podium, complete with shower facilities and changing rooms.

Included in this remarkable community are schools as well as kindergartens and nurseries. 7,000 secondary and primary places are available. There are also schools for ballet, music and art right in Taikoo Shing.



Cityplaza is right in the heart of Taikoo Shing with over 100 shops of all descriptions to provide a wide variety of shopping to meet every need. Supermarkets, fresh meat and vegetable markets, boutiques, book-stores, banks are all there. In addition there is a wide range of local shopping throughout the estate. Phase two of Cityplaza is now being planned.

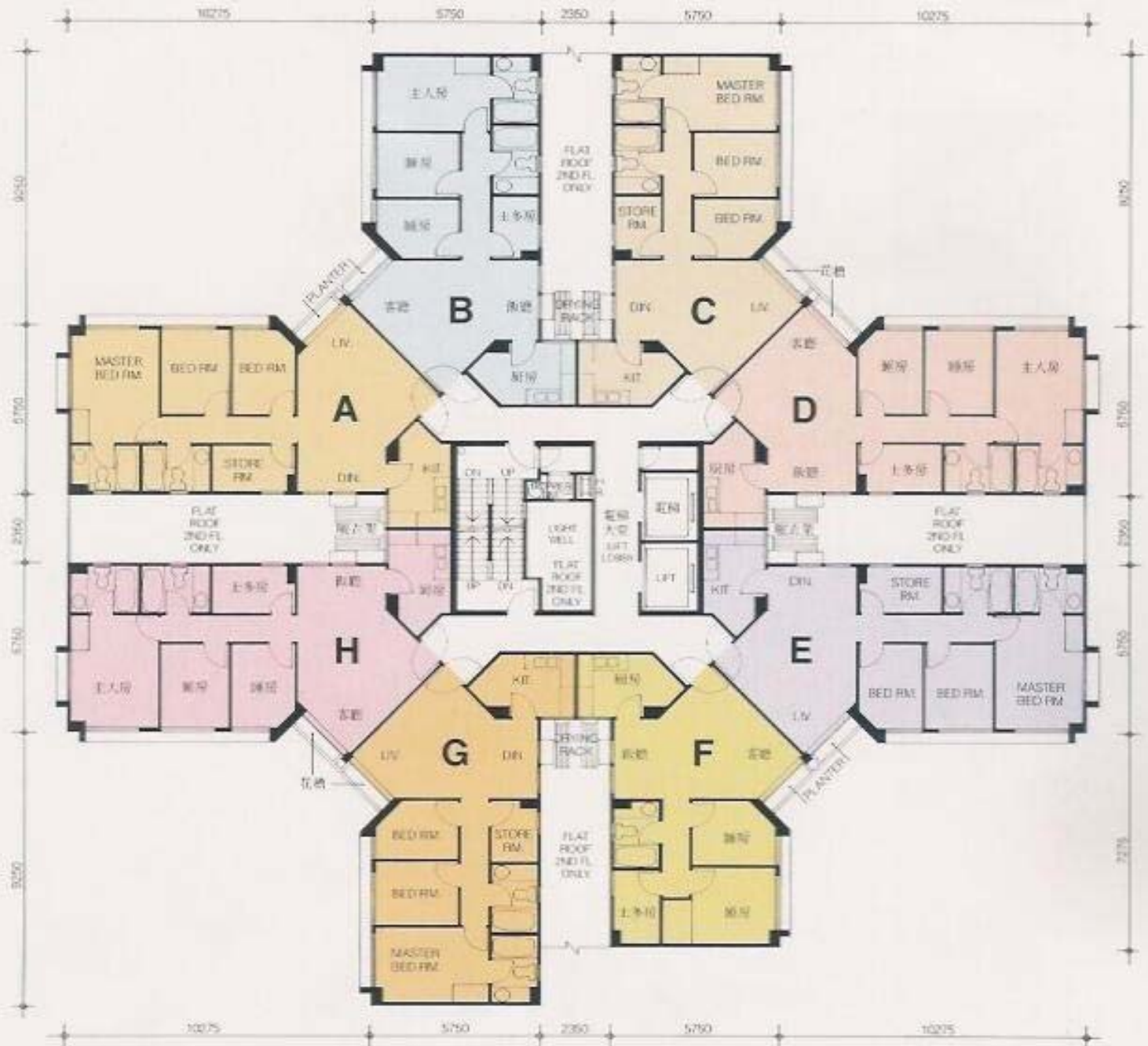
Recreation and entertainment facilities are numerous. Two cinemas, an ice-skating rink, a roller skating rink, 34-lane bowling alley, several 'adventure' playgrounds for children, tennis courts are all only a short walk from the comfort of your home. Residents of Tung Hoi Mansion can also enjoy a full size swimming pool and a children's pool on the podium, complete with shower facilities and changing rooms.

Late 1980s



Artist impression of Garden Podium. 畫家筆下之平台花園





Whampoa Garden is now well-established with many commercial and service outlets already in place, including supermarkets, department stores and a large variety of other shops, together with restaurants, banks, a post office, a youth centre, kindergartens and a nursery, as well as a bowling centre and all manner of areas set aside for recreation and relaxation.

Opening soon, there will be a Yaohan Department Store, a fully air-conditioned wet and dry market, cinemas, a primary school and a comprehensive sports and recreation club — with indoor swimming pools, tennis courts, squash courts, a gymnasium, a roller-skating rink and more.

Whampoa Garden is now more readily accessible than ever. With the completion of a new road system, it is most convenient to get to Hong Kong, other parts of Kowloon and the New Territories. The ferry pier will soon be relocated and brought within closer reach of Whampoa Garden, making it easier still to get to Hong Kong Island. Again, a permanent bus and public light bus terminus in Site 8 is due to go into operation by the end of 1988. In the mean time, there is a temporary public light bus terminus; and bus routes 8A and 12A have been extended to serve Whampoa Garden.

Recently





唯有海堤灣畔
獨擁的永久海景*

海堤灣畔

SEASIDE PROMENADE



渡輪碼頭

政府用地

政府規劃擬建住宅用地

海濱公園

東涌海濱路

TUNG CHUNG WATERFRONT ROAD

藍天海岸 (建築中)

葵蕙園 (建築中)

東涌綫

擬建公園及足球場

計劃中酒店

商業用地

政府設施

擬建吊車總站
(往天壇大佛)

巴士總站
(商業用地)

寫字樓

戲院

東薈城
購物商場

郵政局

擬建公共游泳池

東堤灣畔

富東邨

裕東苑

北大嶼山公路

NORTH LANTAU HIGHWAY

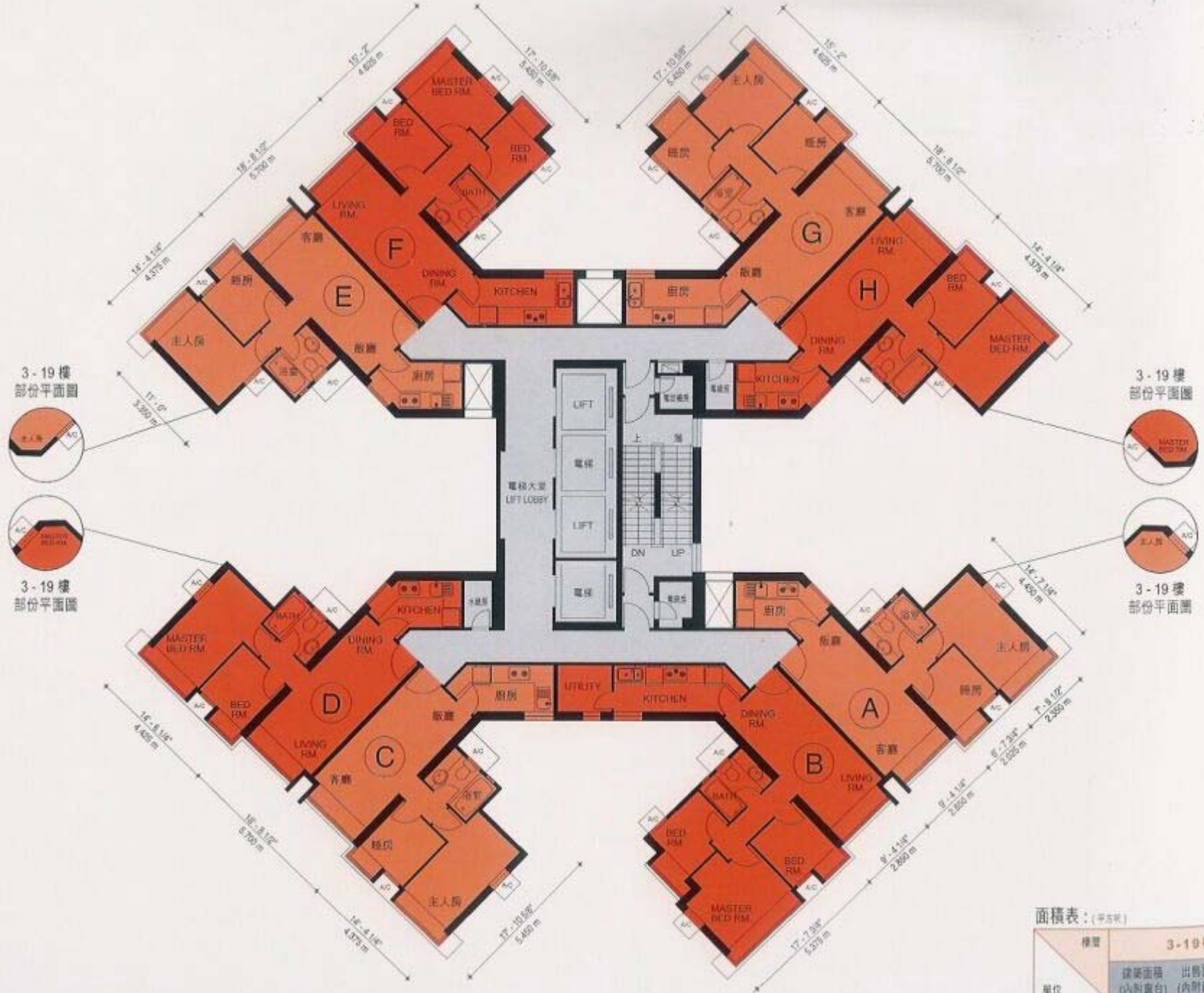
郊野保護區

YU TUNG ROAD



6樓至58樓平面圖





3-19樓
部份平面圖



3-19樓
部份平面圖



3-19樓
部份平面圖



3-19樓
部份平面圖

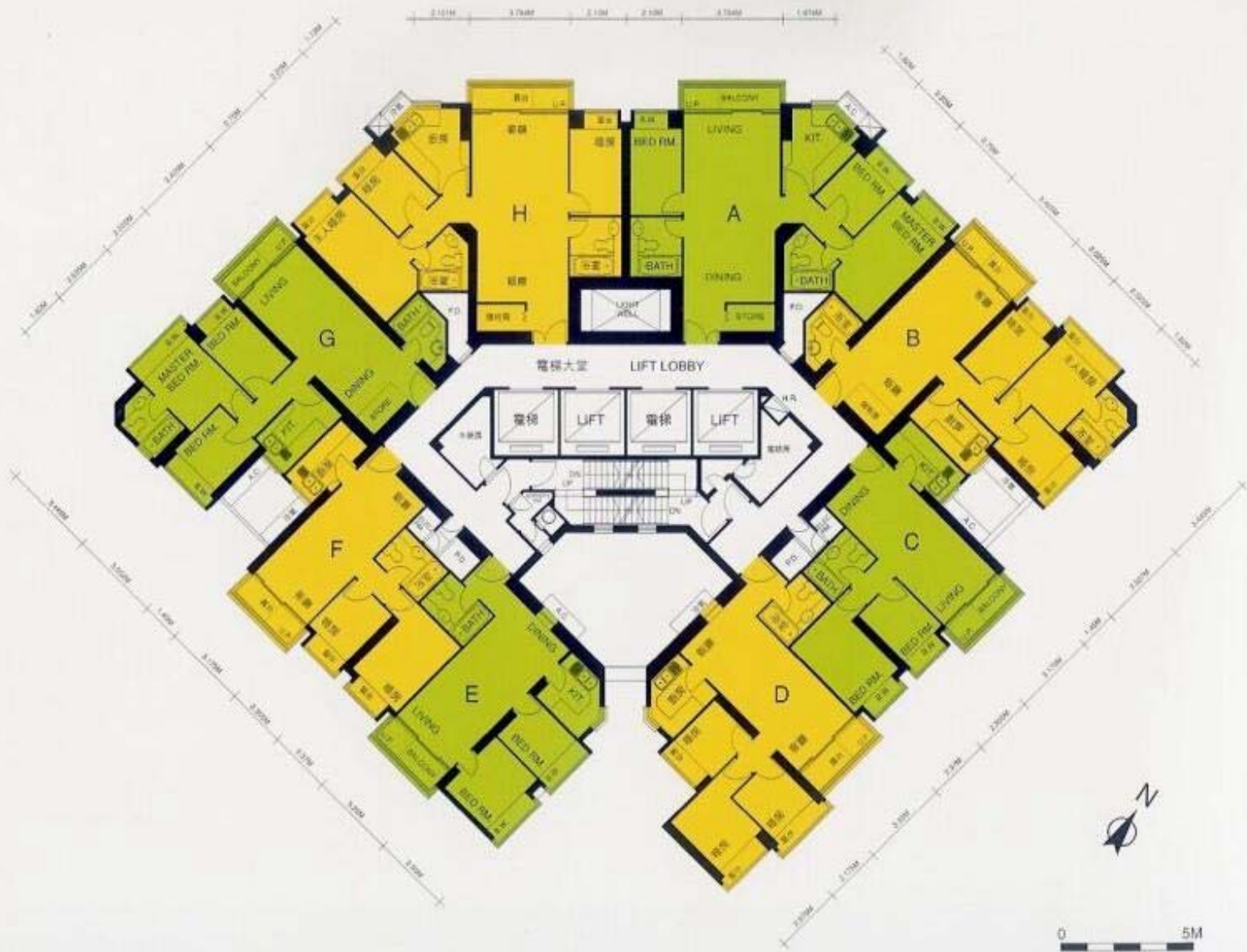


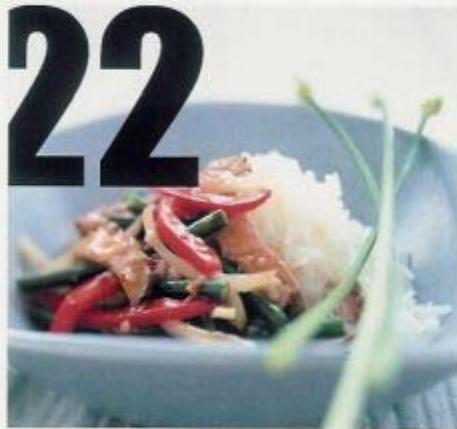
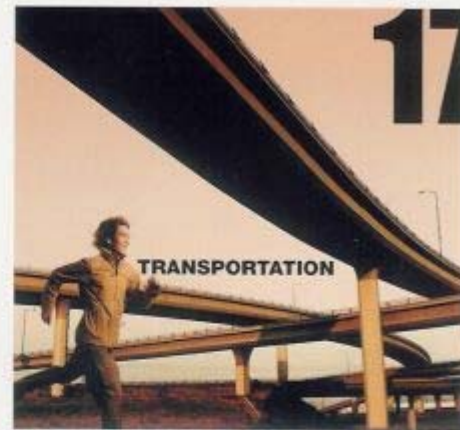
面積表：(平方米)

單位	樓層	
	3-19樓	
	建築面積 (內附露台)	出售面積 (內附露台)
A	606	478

TOWER 7 座

6-65 樓平面圖
Floor Plan







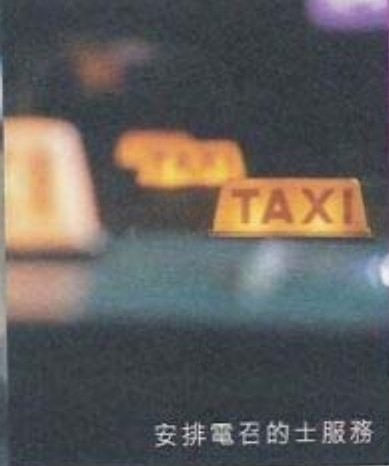
Shopping



高速寬頻上網



TAXI



SERVICES



安排電召的士服務

提供室內裝修及設計



安排傢俬搬運及存倉



全屋電器安裝及改裝工程



安排女傭聘用服務(包括家務助理)



設有寄存及代客收貨服務



代訂家庭電器用品



安排專車接送住戶
(包括往返機場等)



乾濕洗熨服務

81



人原來可以

在水中

健身的





健康舞室 健身室 多用途宴會室 備餐間 電子視像遊戲室 棋藝及閱讀室 模擬哥羅天球練習室 堤岸咖啡座

有蓋觀海走廊

閒庭休憩處 乒乓球室 室內體育館(籃球/羽毛球/排球)

有蓋觀光走廊

女更衣室 男更衣室

F拉OK室

兒童天地

網絡天地

戶外遊樂場

桌球室

兒童水底冒險世界

戶外遊樂場

兒童動感樂園

儲物室



Podium Level 1

住客會所平台一樓平面圖

詳細之訂定圖則以及有關部門核准此項之圖則為標準。
 All plans are subject to the amended plans to be approved by the Building Authority.

鄰近學府一覽

Prestigious Schools Nearby

大學

University

香港大學

The University of Hong Kong

中學

Secondary

英皇書院

King's College

聖類斯中學

St Louis School

聖保羅書院

St Paul's College

英華女學校

Ying Wa Girls' School

高主教書院

Raimondi College

聖若瑟英文書院

St Joseph's College

聖保羅男女中學

St Paul's Co-educational College

聖士提反女子中學

St Stephen's Girls' College

小學

Primary

聖嘉勒小學

St Clare's Primary School

嘉諾撒聖心學校

Sacred Heart Canossian School

聖保羅男女小學

St Paul's Co-educational Primary School

聖士提反女子中學附屬小學

St Stephen's Girls' Primary School

幼稚園

Kindergarten

合一堂幼稚園

Hop Yat Church Kindergarten

迦南國際幼稚園

Cannan International Kindergarten

太陽島英文幼稚園

Sun Island English Kindergarten

卓基英文學校暨幼稚園

Cherish English School & Kindergarten



HK-BEAM Society
香港環保建築協會

Certificate of Assessment

in accordance with the Hong Kong Building Environmental Assessment Method
HK-BEAM for New Residential Buildings (Version 3/99)

評估證書

評估工作按香港建築環境評估法新建住宅設計 (99版) 進行

for the

BUILDING NAME

Building Address

頒予

住宅名稱

Chinese address

Achieving the HK-BEAM Rating of

EXCELLENT

已獲評定為以下級別

優 秀

this day the date-month-year

於xxxx年xx月xx日簽發

Mr. Michael Arnold, 顏樂德先生

Chairman, HK-BEAM SOCIETY

香港環保建築協會主席

Certificate Reference (證書編號) : Cxxxx