



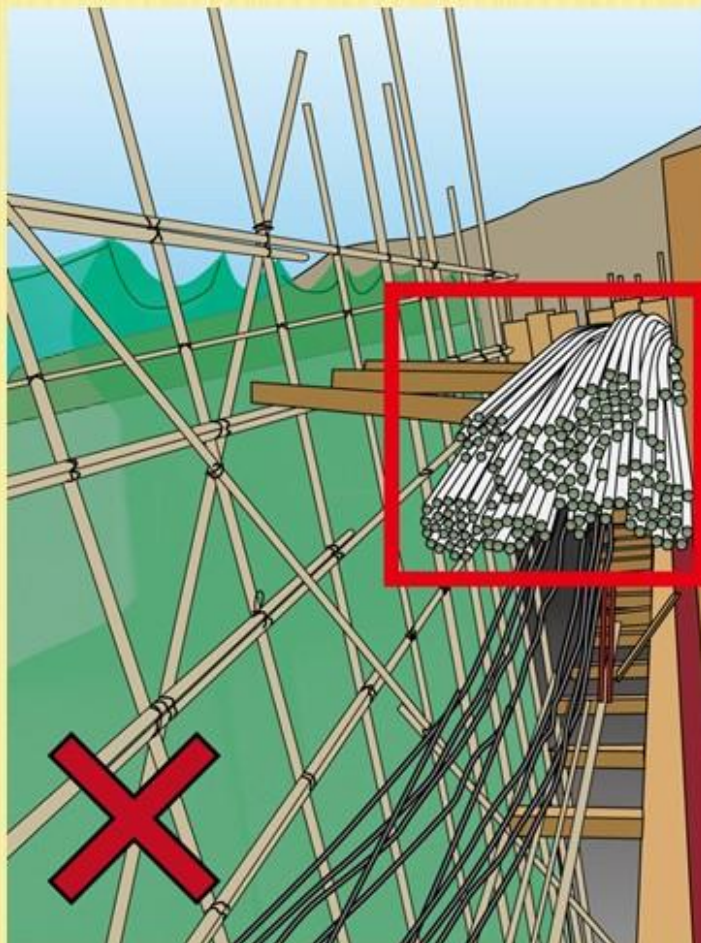
**PREVENTION OF FALLING  
OBJECTS**

防止高空坠物

23

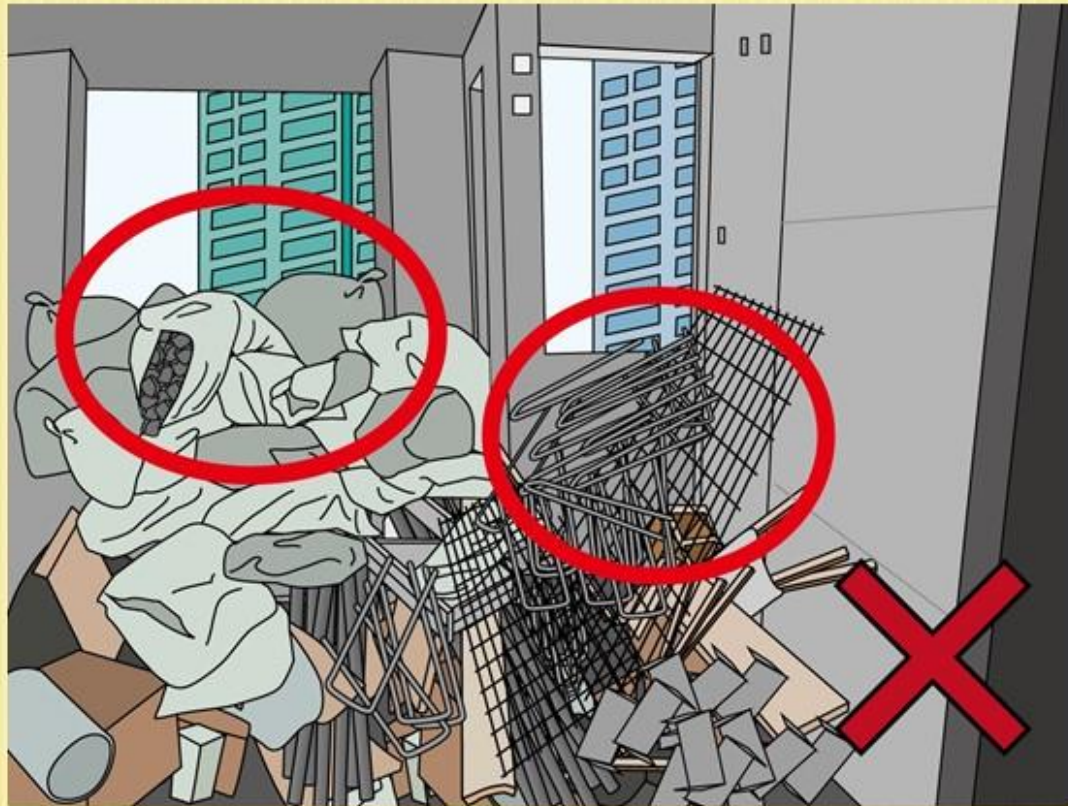
物料推迭于竹棚架上

MATERIALS STACKED ON BAMBOO SCAFFOLD



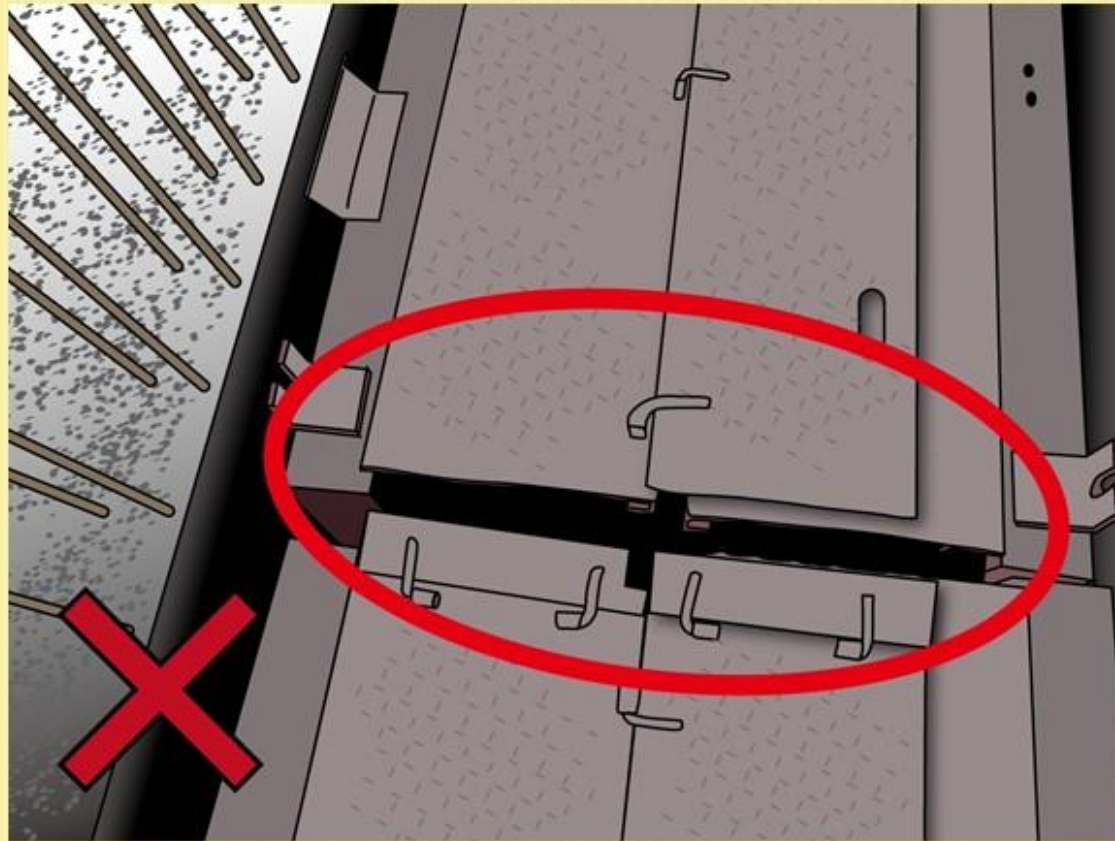
建筑废料推送过高并超出窗口高度

THE STACKING LEVEL OF CONSTRUCTION WASTE  
WAS ABOVE THE LEVEL OF WINDOW OPENINGS

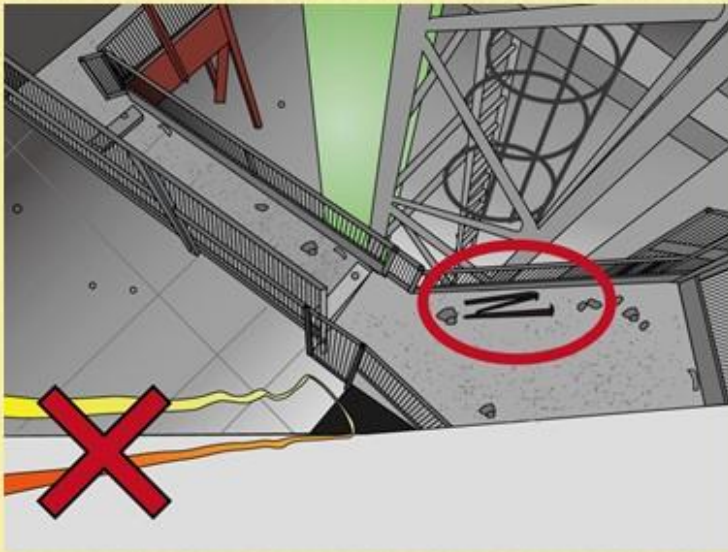


铁模边出现罅隙（铁模下是行人通道）

GAP EXISTS BESIDE AND BETWEEN METAL FORMWORK  
(THERE IS A WALKWAY BELOW THE METAL FORMWORK)



应将外墙铁模平台上的杂物碎料清走  
DEBRIS AND LOOSE MATERIALS SHOULD BE  
CLEARED FROM THE EXTERNAL WALL METAL  
PLATFORM



楼高七层以上的建筑没有安装保护檐篷

PROTECTIVE CANOPY WAS NOT INSTALLED FOR A STRUCTURE OF 7 OR MORE FLOORS.



出料台上物料堆栈过高

MATERIALS STACKED TOO HIGH ON LOADING  
PLATFORM

