



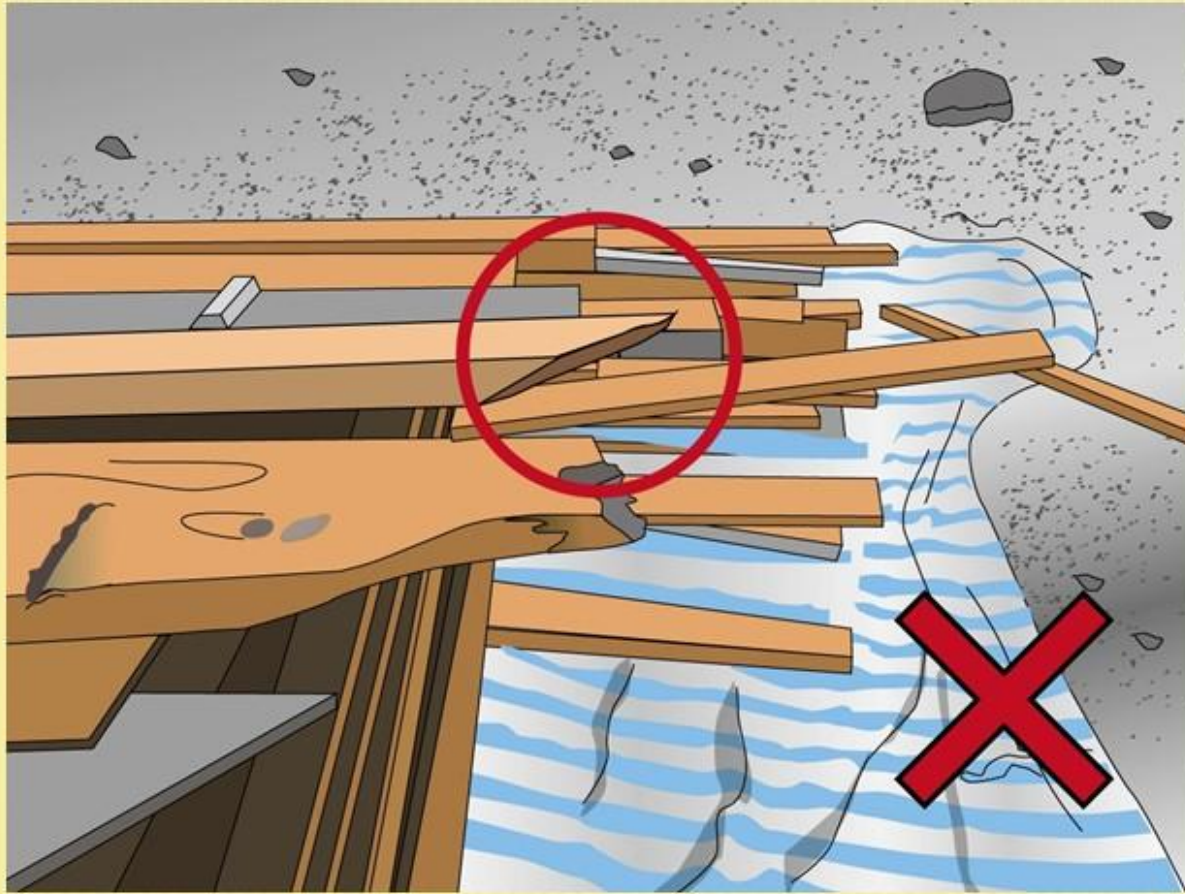
HOUSEKEEPING

工作场所整理

30

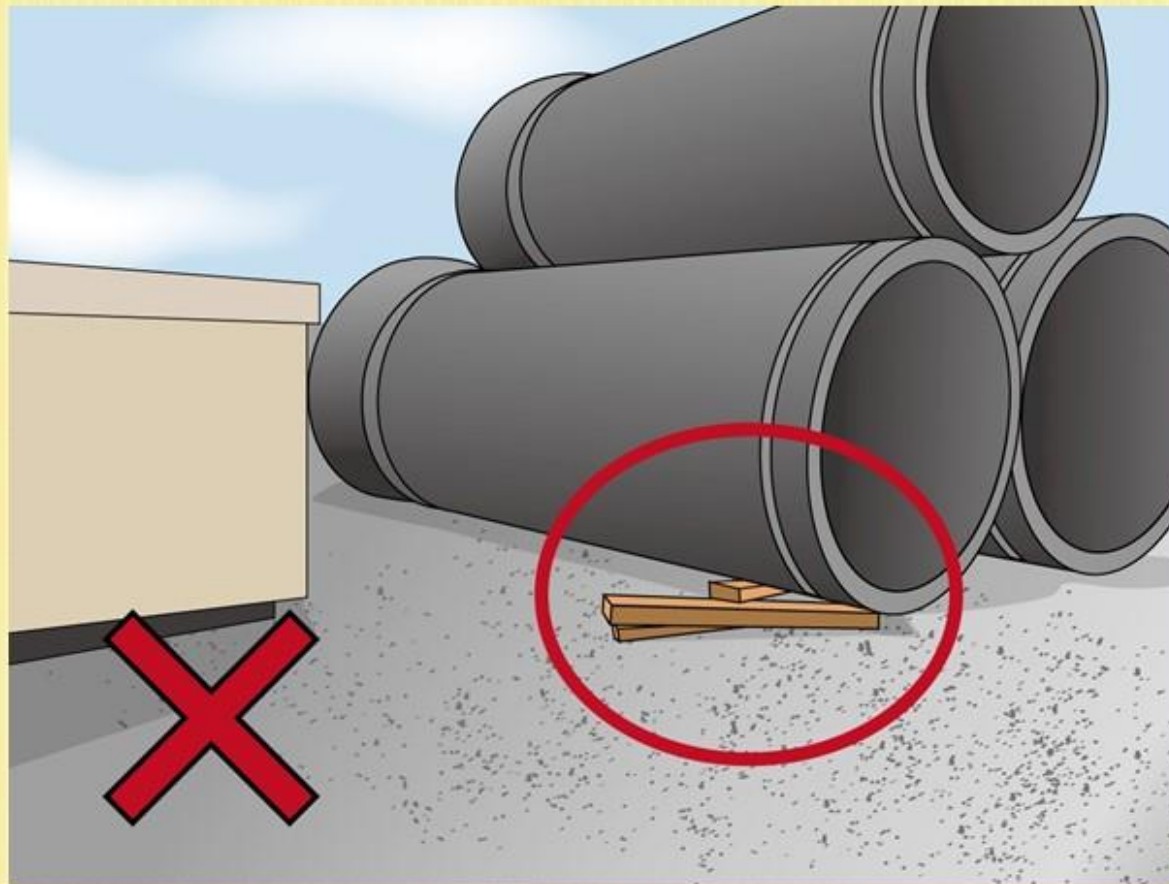
PROJECTING SHARP OBJECT

突出的尖锐物

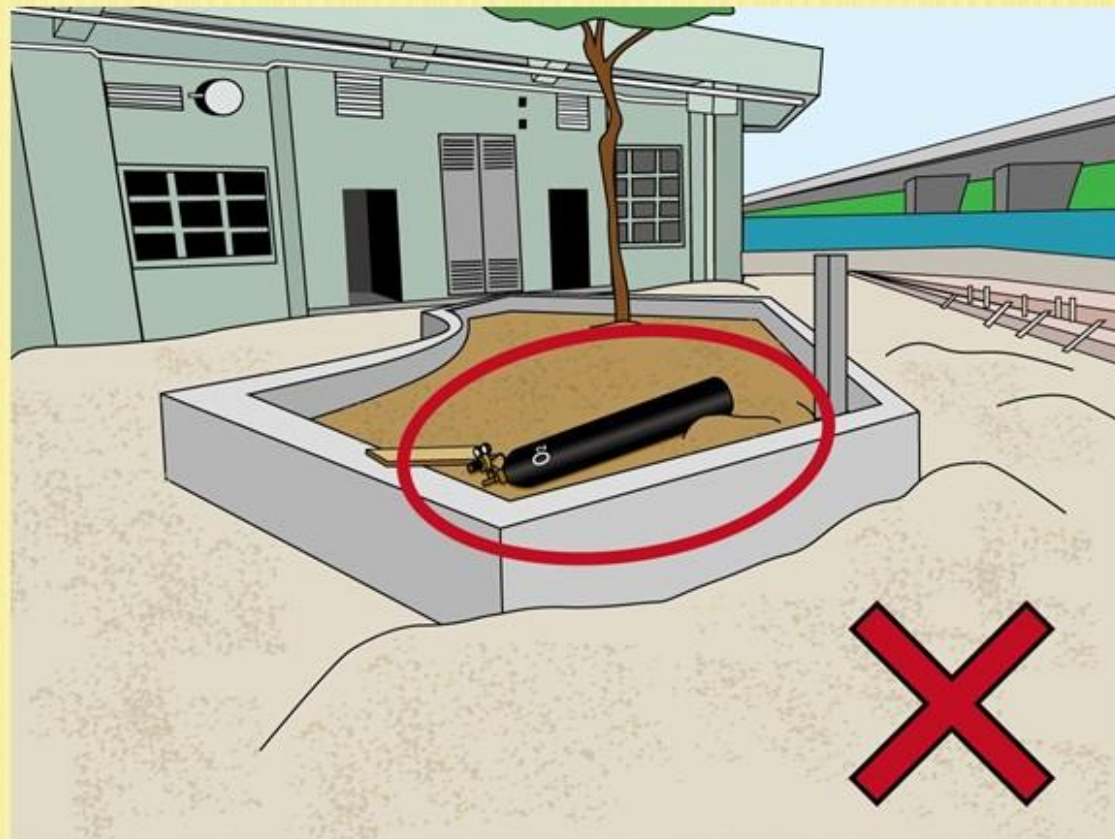


CONCRETE PIPES WITHOUT SECURE STOPPER

大型石矢渠筒没有被妥善楔好

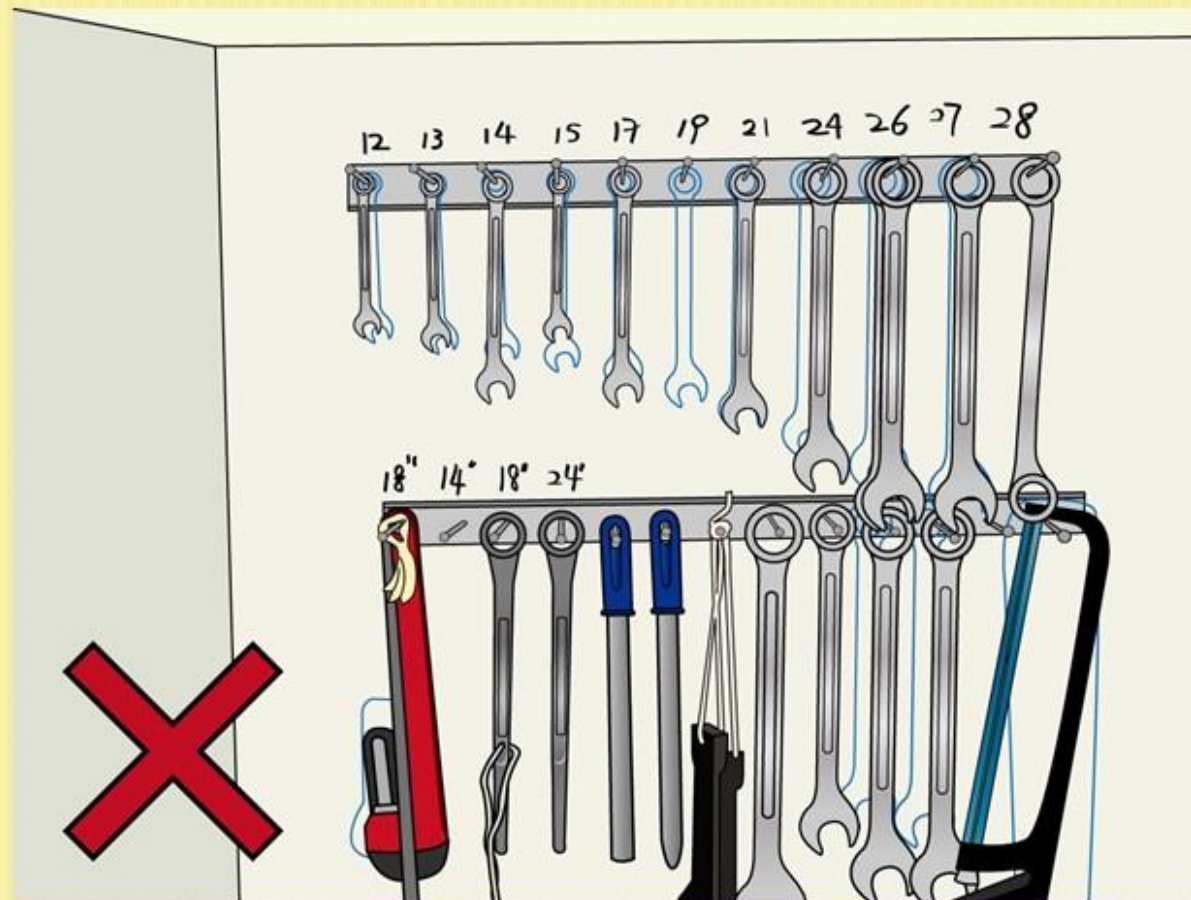


Empty gas container found inside planter
用完的氧气瓶没有被妥善储存



HOUSEKEEPING SYSTEM NOT BEING FOLLOWED

没有依从良好工作场所安排



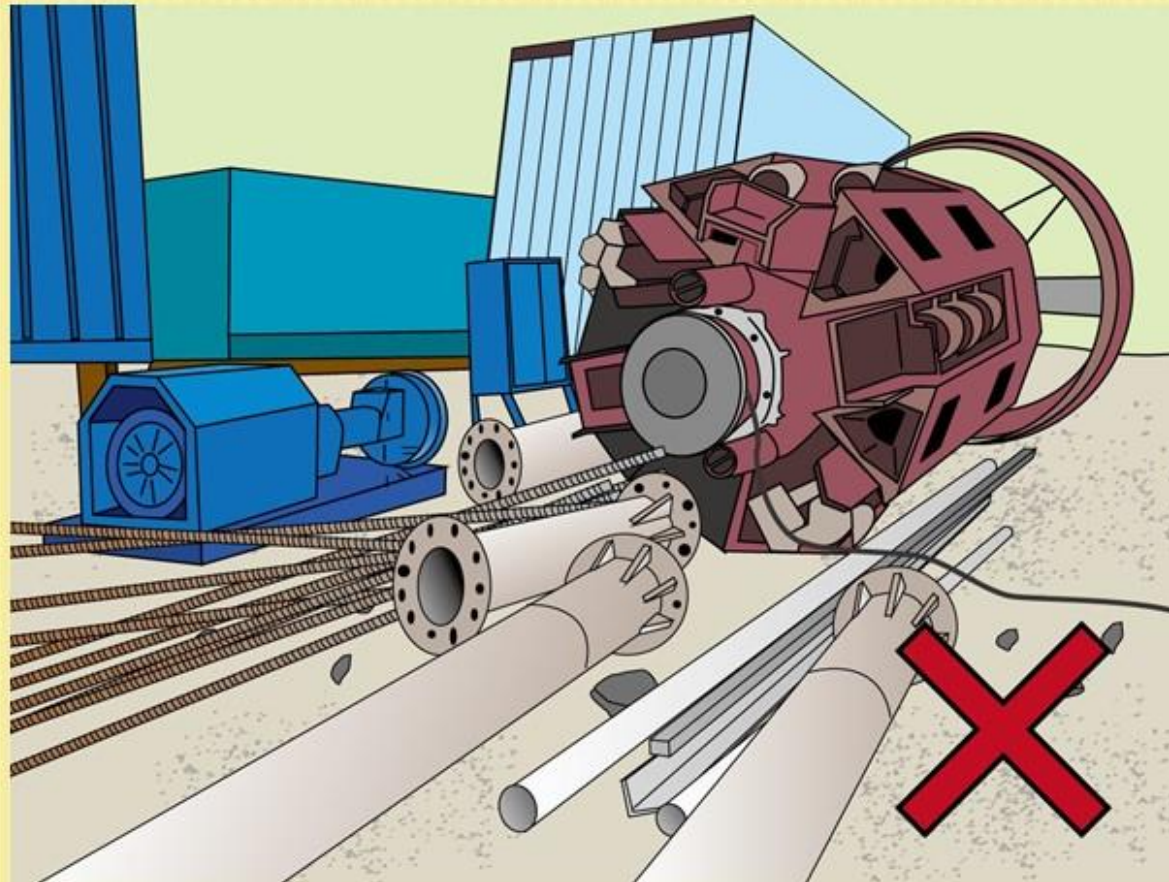
铁模没有足够支撑

**METAL FORMWORK WITHOUT SUFFICIENT
SUPPORT**



物料随地乱放

MATERIALS STORED IMPROPERLY



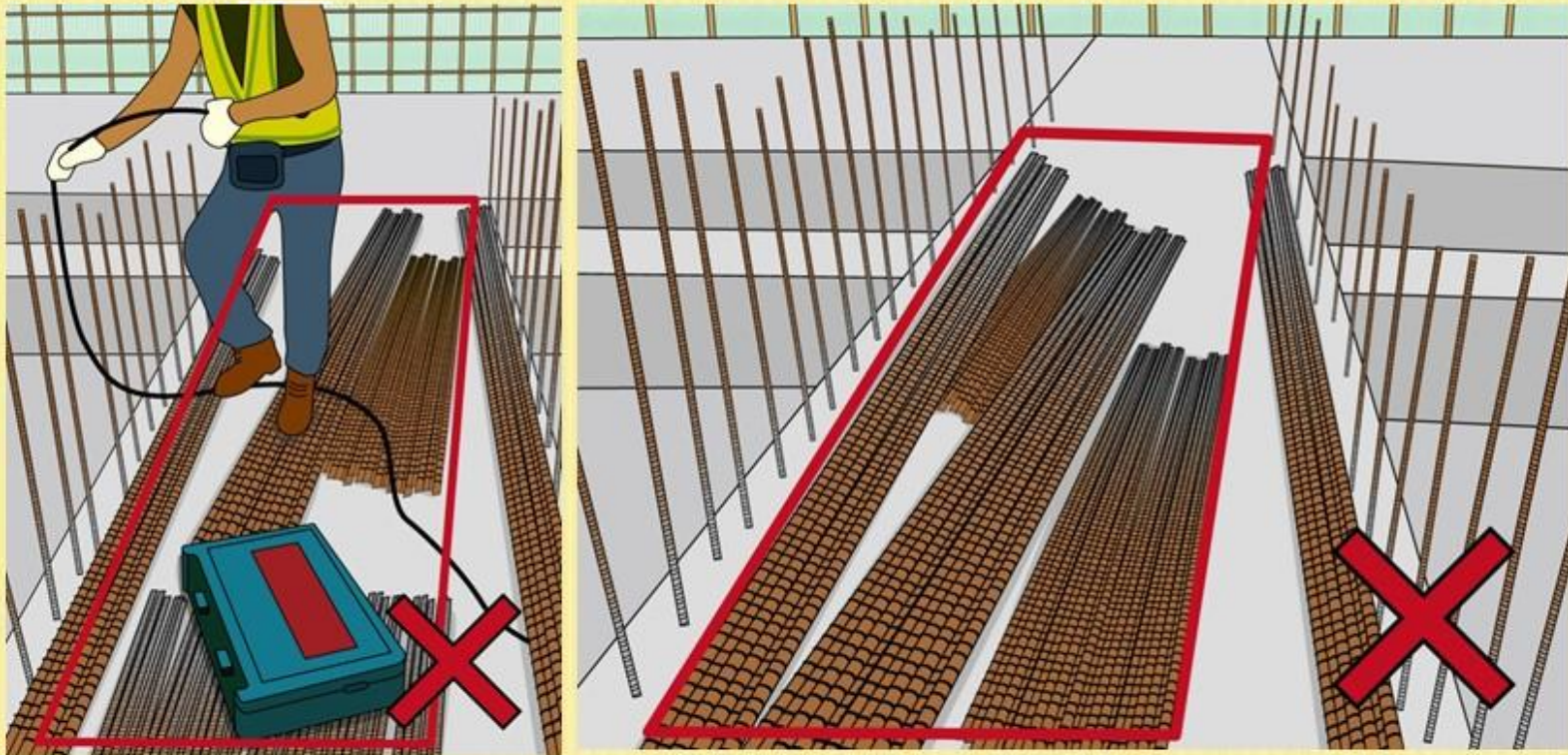
突出的尖锐物

PROJECTING SHARP OBJECT



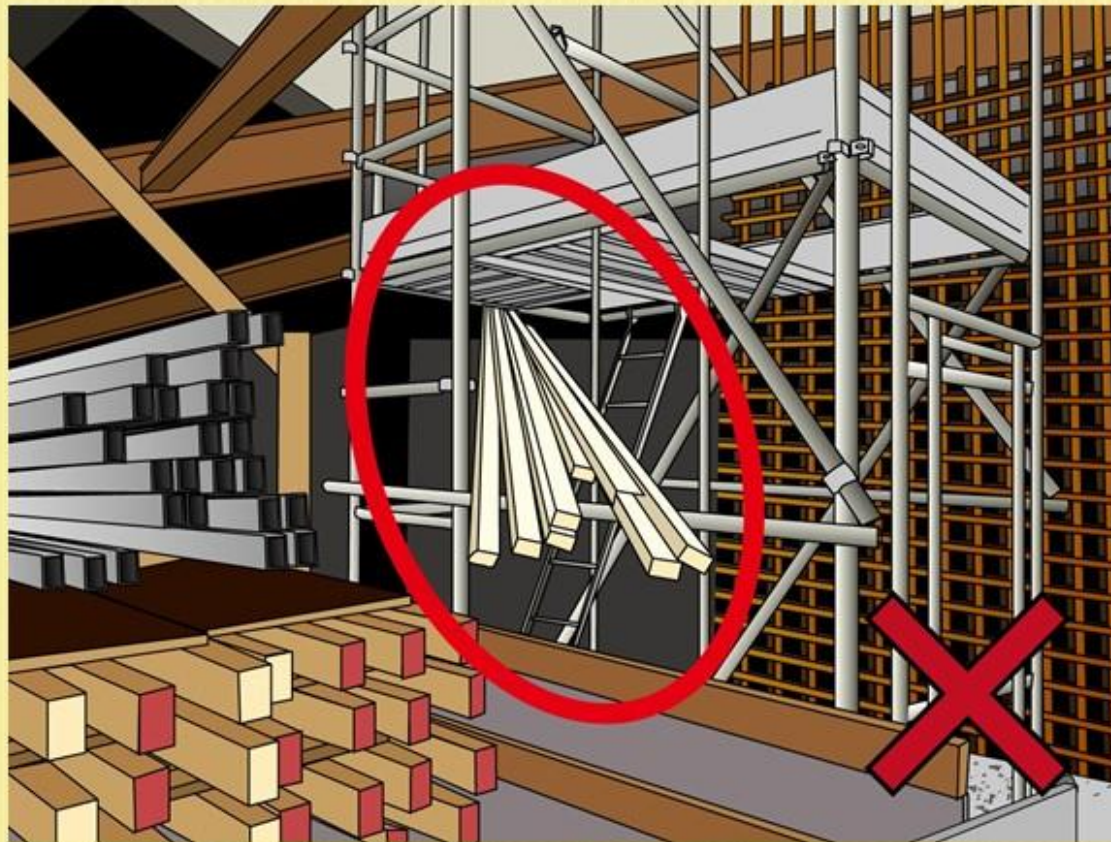
钢筋放置于主要道路或导致绊倒

METAL BARS PLACED ON THE MAIN ACCESS
CAUSING TRIPPING HAZARD



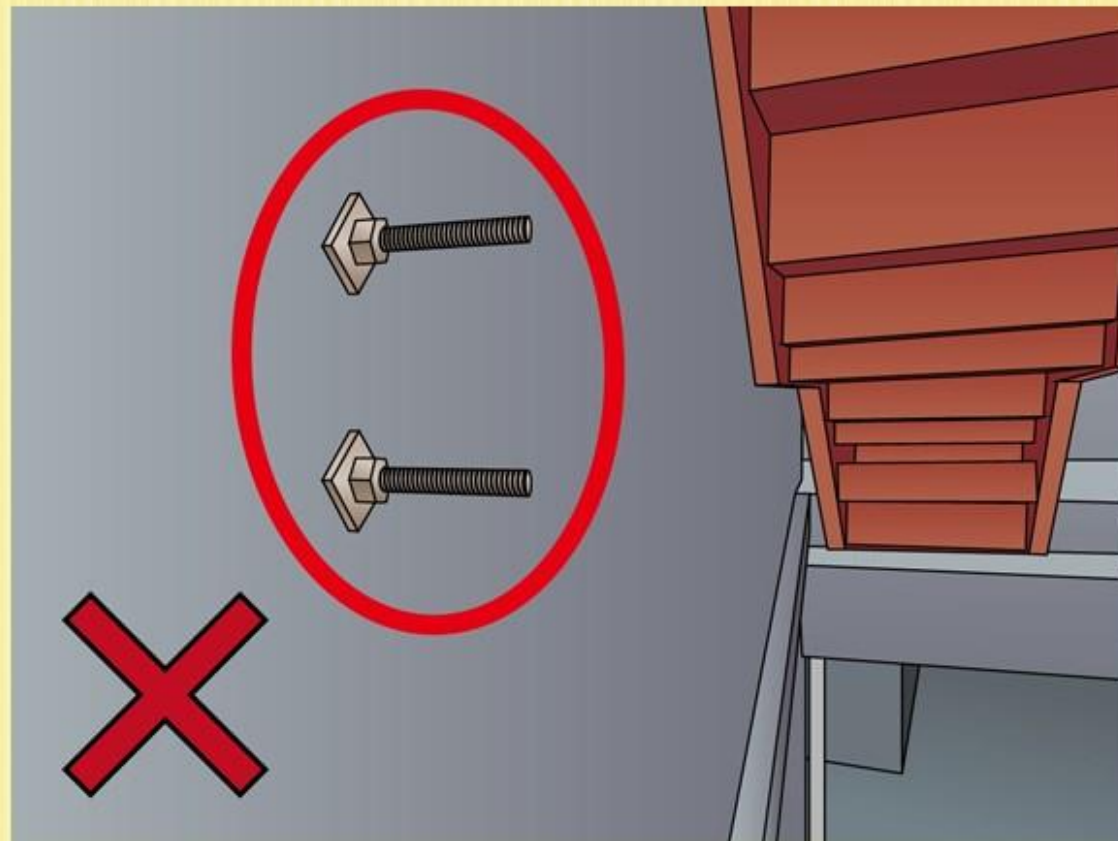
木条不穩固地斜放于通架上

WOOD BATTENS STORED INSECURELY AT
MOBILE SCAFFOLD



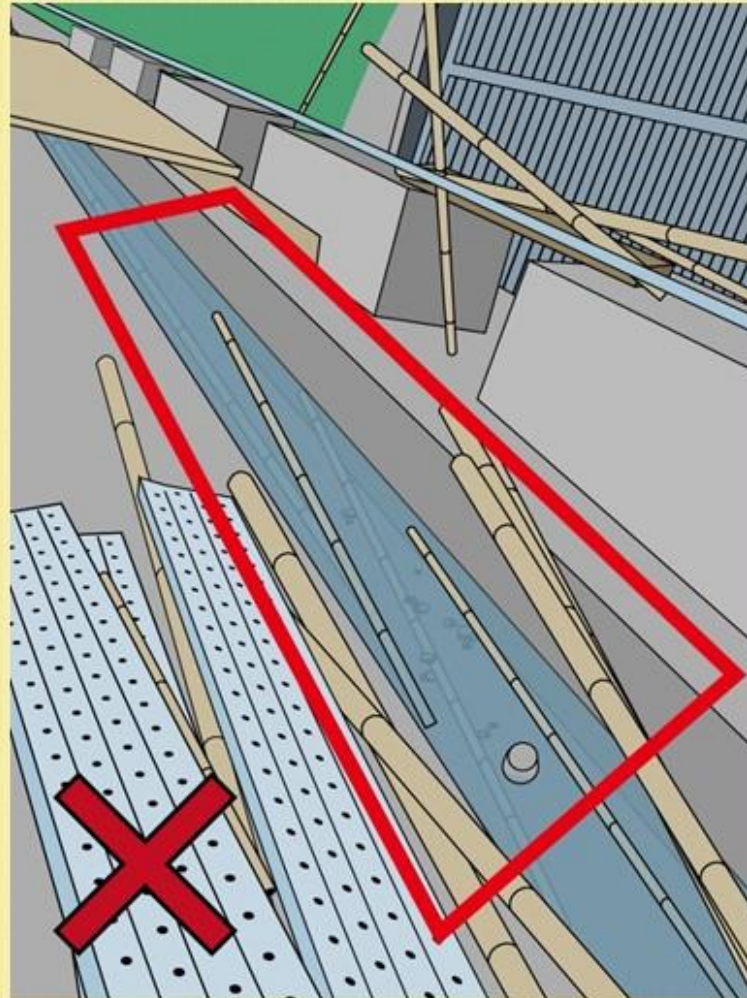
过山缆索凸出于进出路径

PROJECTING BOLTS WERE FOUND ON ACCESS ROUTE



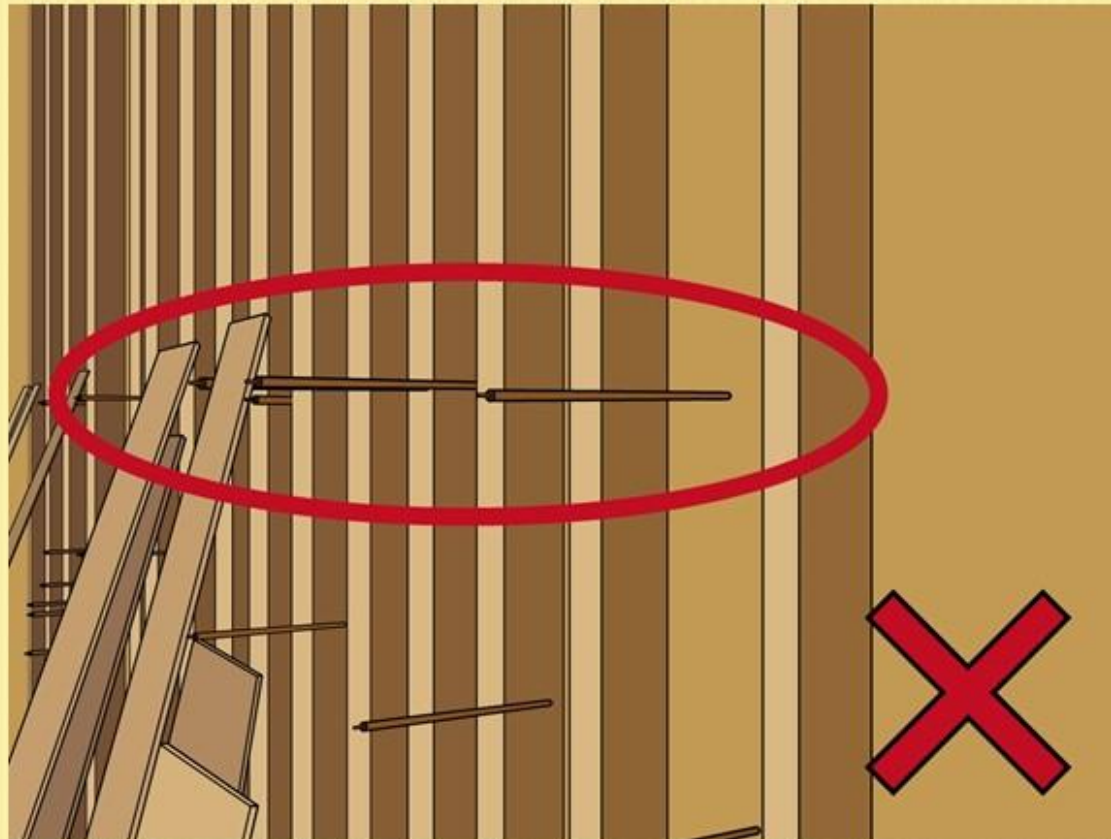
应清除积水以杜绝蚊患

STAGNANT WATER SHOULD BE REMOVED TO
ELIMINATE MOSQUITO BREEDING



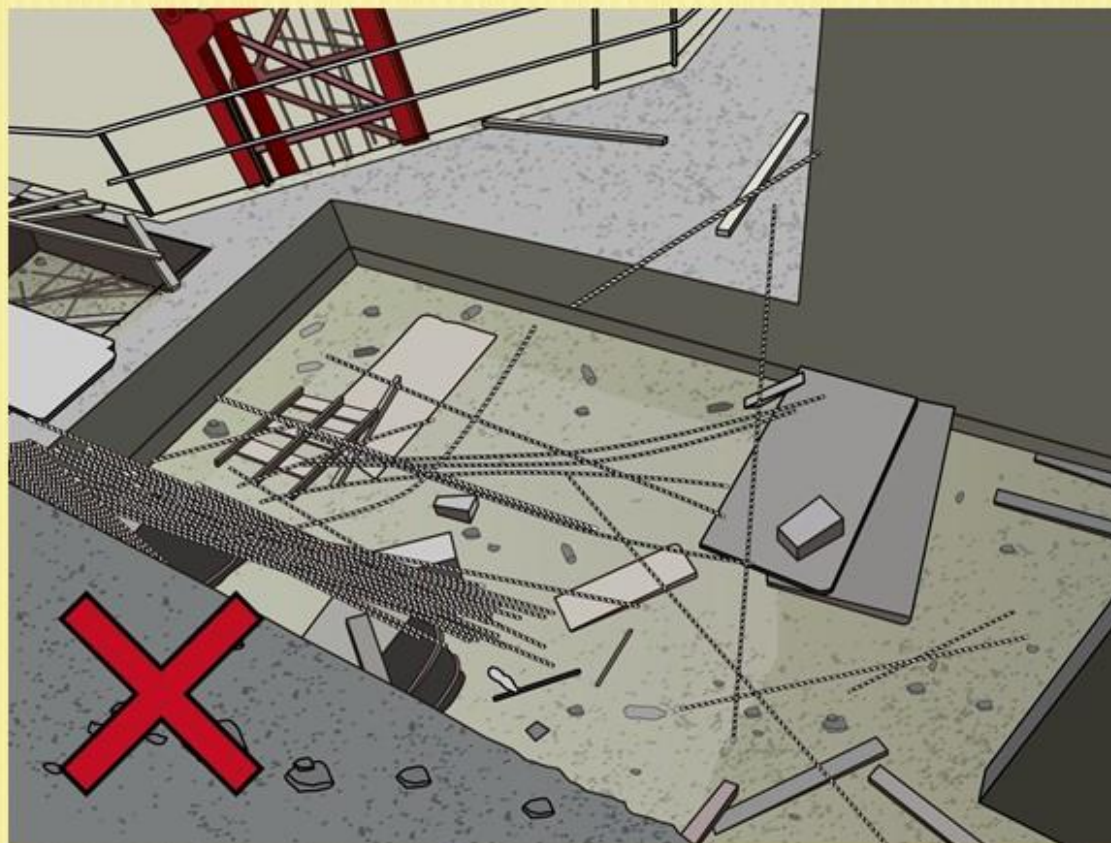
螺栓没有作出保护

PROTRUDED BOLTS WERE NOT COVERED



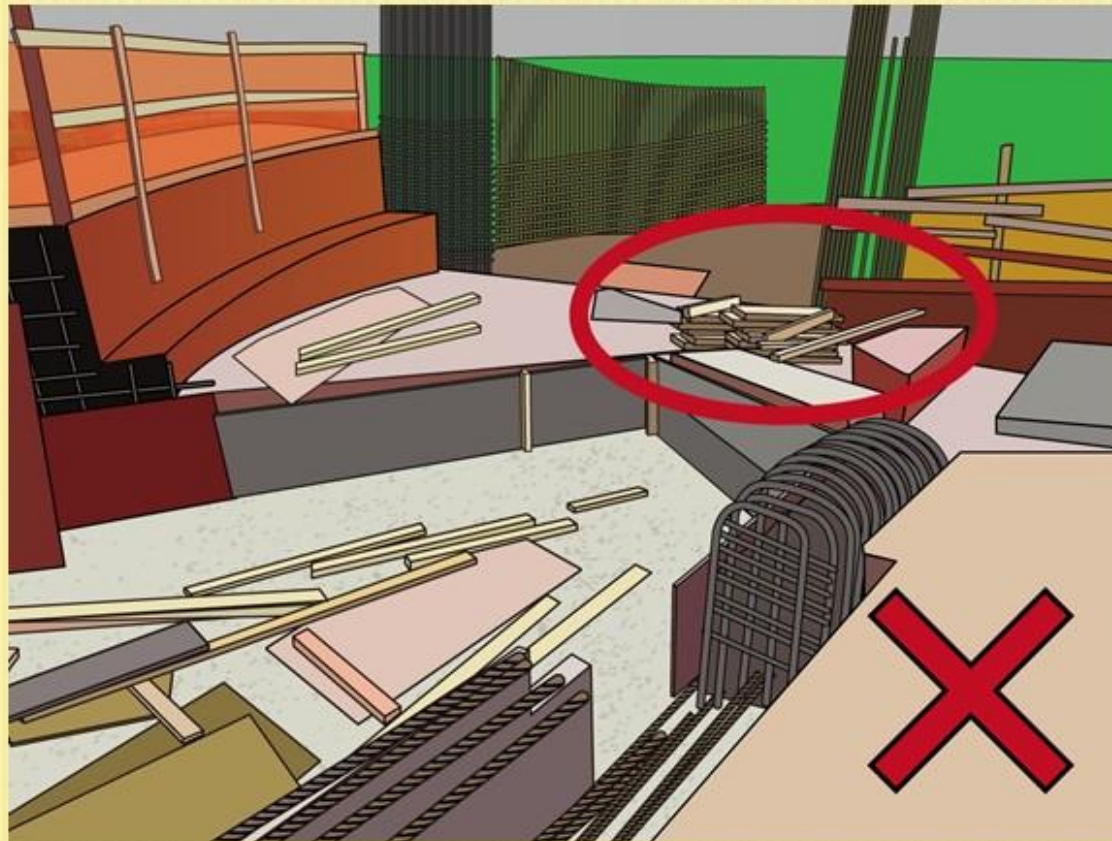
檐篷上有积水

WATER PONDING ON THE CANOPY



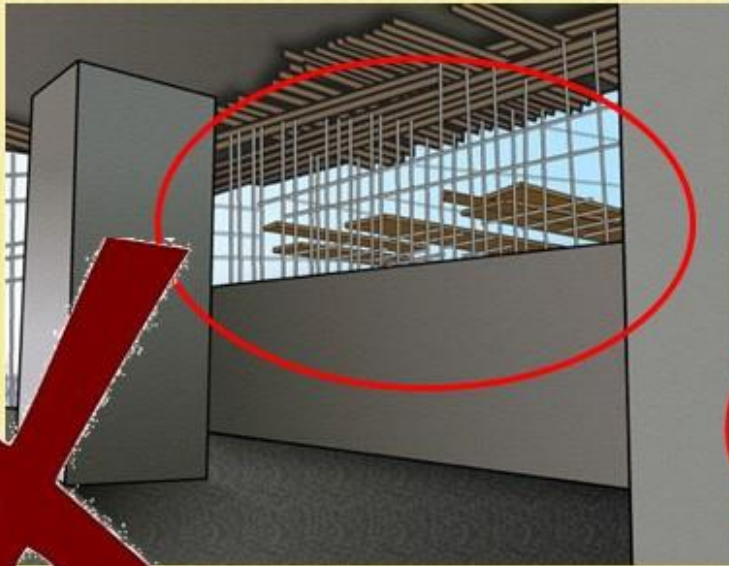
物料阻碍通道

MATERIALS OBSTRUCTED THE WALKWAY



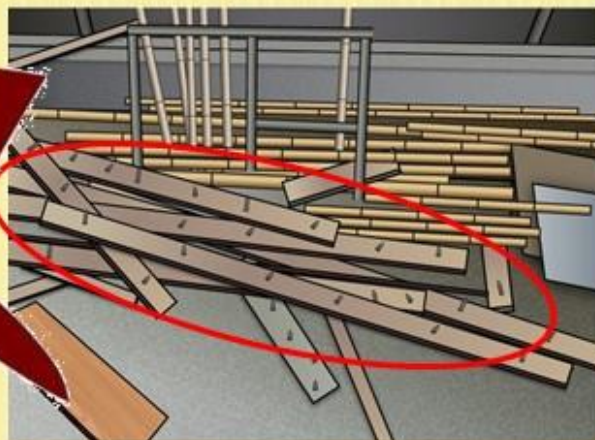
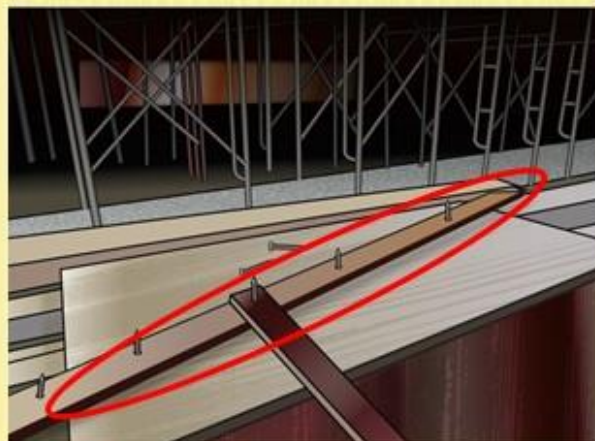
物料存放于临时支架的门架上

MATERIALS WERE STORED ON PLANE FRAMES OF
FALSEWORK



突出的铁钉。

PROJECTING NAILS WERE FOUND.

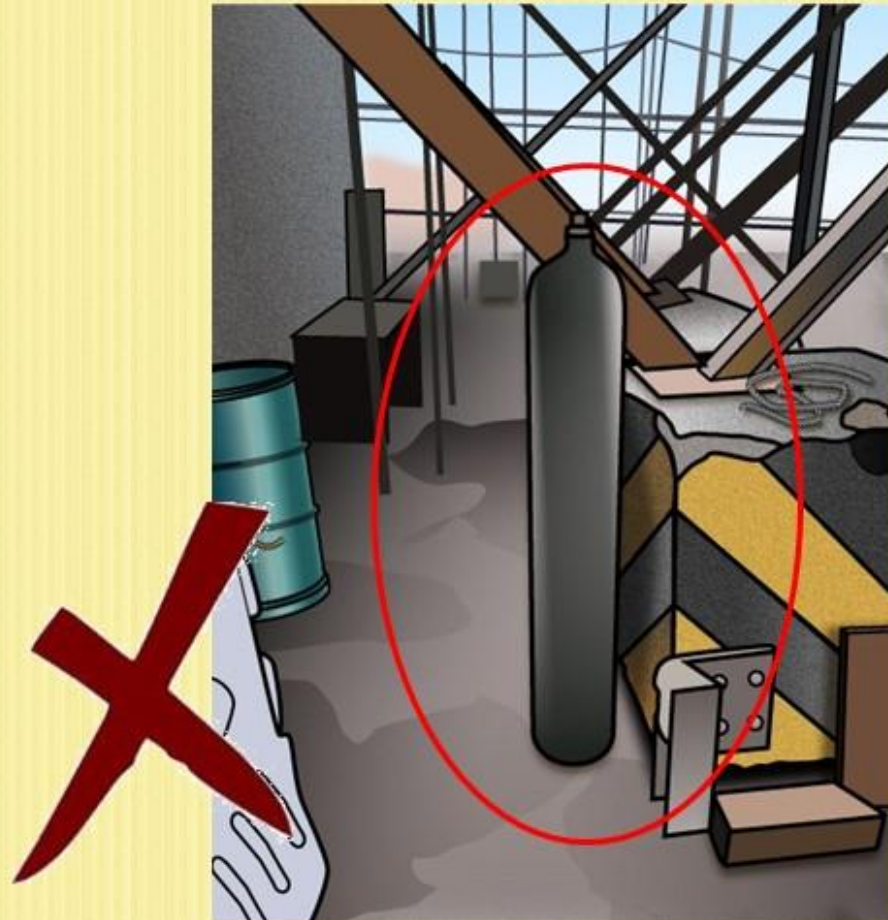


在通道上堆放杂物

MATERIAL WAS STORED ON THE PASSAGEWAY



没有为气瓶提供保护以防倒下；气瓶没有存放于指定地方
GAS CYLINDER WITHOUT ANY PROTECTION AGAINST TOPPLING , AND
NOT STORED IN DESIGNATED AREA



渠筒没有楔好。

STACK OF PIPE SECTIONS WAS NOT WEDGED.



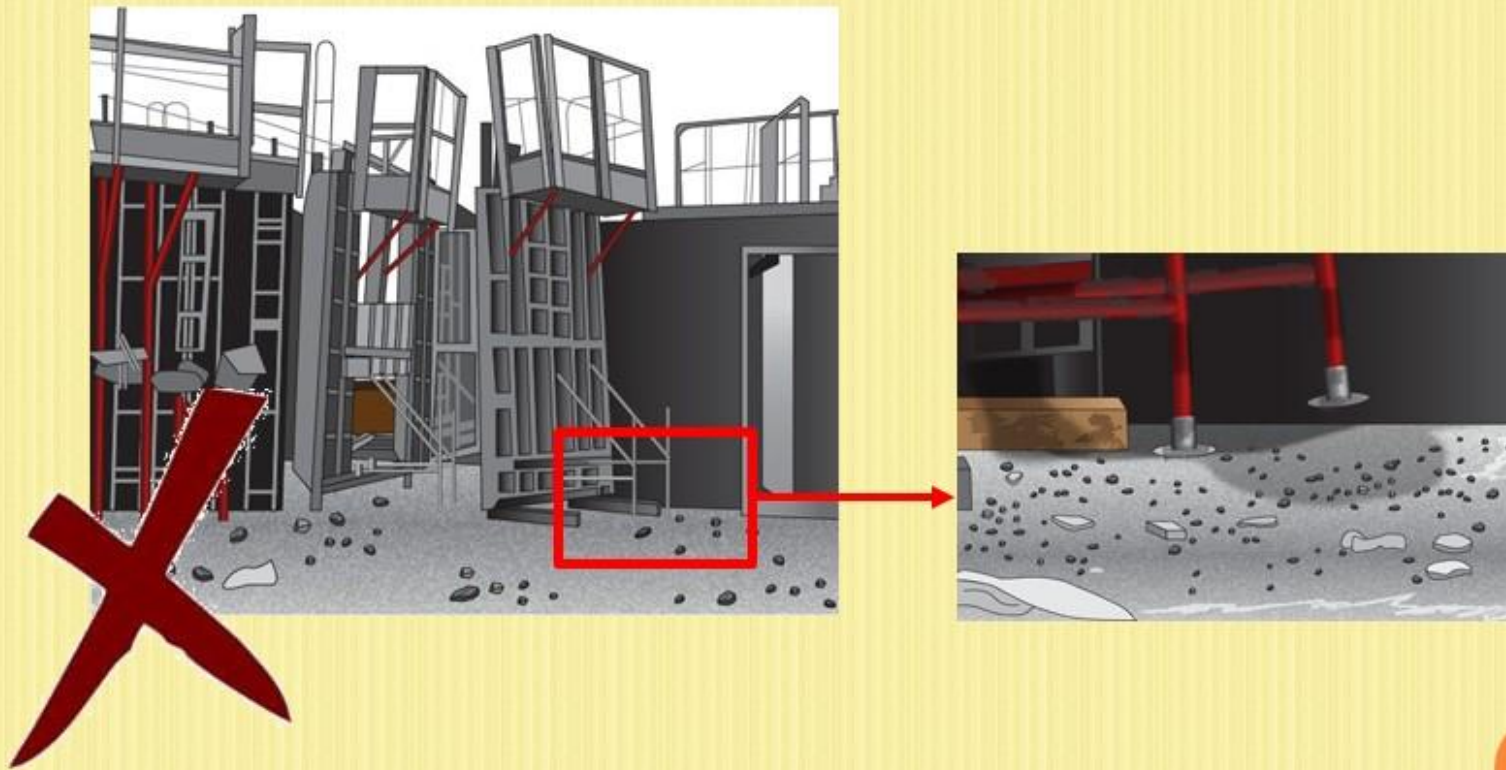
通往塔式起重机的通道有绊倒危害（木板）。

TRIPPING HAZARD/OBSTACLE (WOODEN PLANKS) WAS FOUND ON ACCESS LADDER TO TOWER CRANE.



铁范本没有足够支撑。

PANEL FORMWORK WAS NOT SECURELY SUPPORTED.



通道上放置物料。

MATERIAL WAS PLACED ON PASSAGEWAY.



在通道上放置物料。

MATERIALS WERE PLACED ON THE PASSAGEWAY.

