

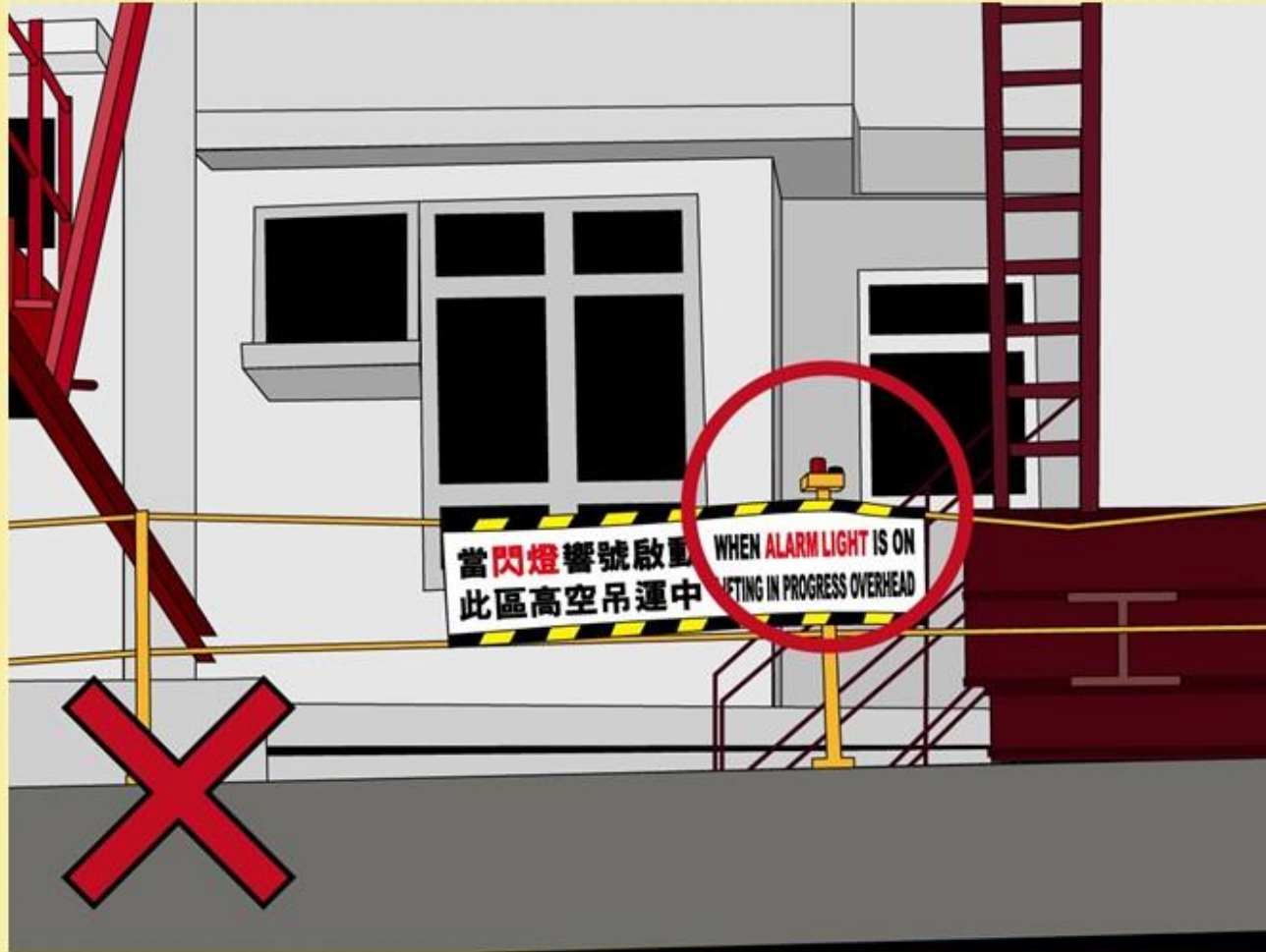


LIFTING OPERATIONS

吊运作业

54

WARNING LIGHT OF LIFTING ZONE MALFUNCTION
DURING LIFTING OPERATION
吊运进行时吊运区闪灯未有亮起



STACKS OF METAL PLATE NOT SECURED DURING LIFTING

吊运中之闸板没有被妥善稳固



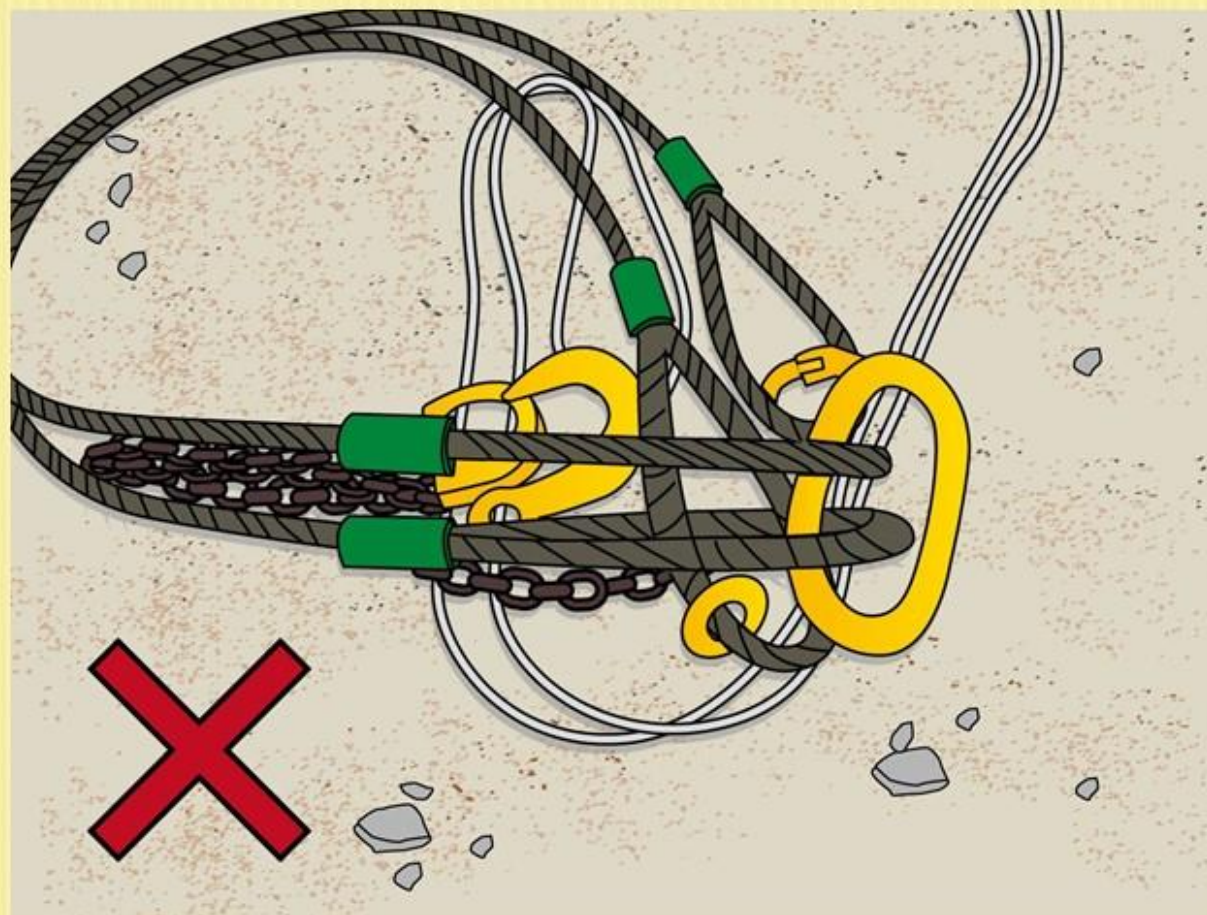
NO OUT-RIGGER PADS WERE
PROVIDED

吊运时未有提供垫脚



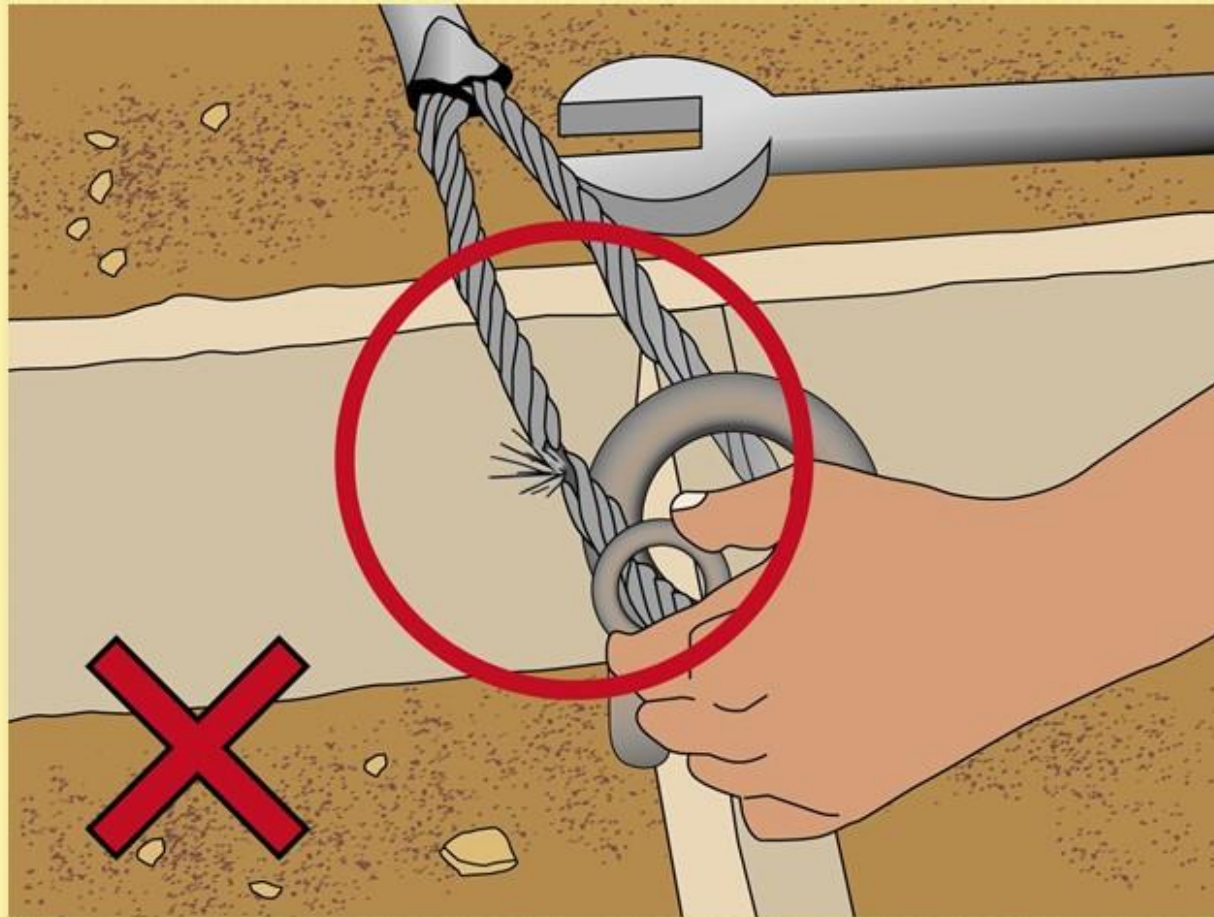
起重装置颜色代码不正确

INAPPROPRIATE COLOUR CODE OF LIFTING
GEAR



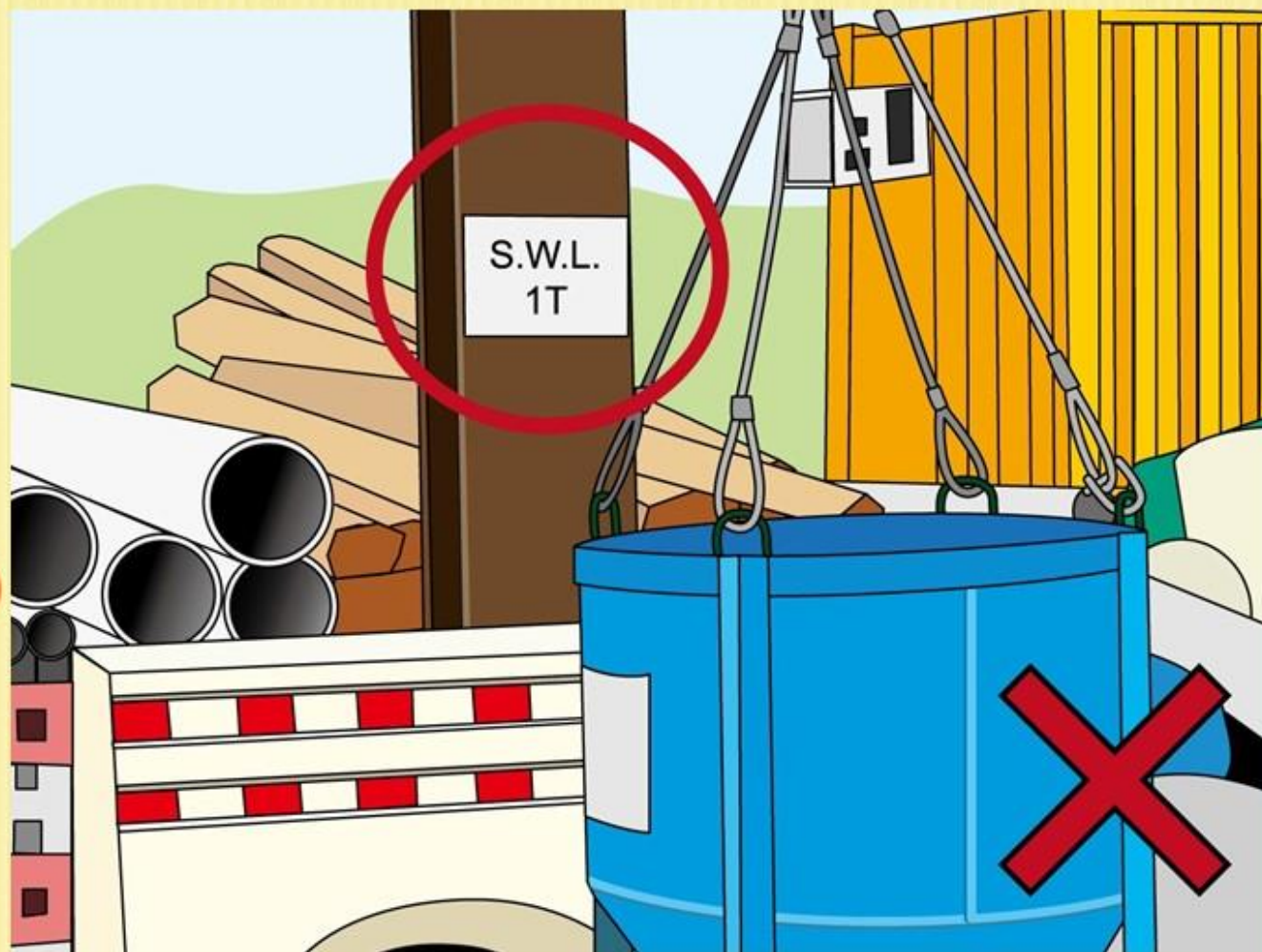
吊重钢缆损毁

DAMAGED WIRE SLING



未有展示中、英文的安全负重

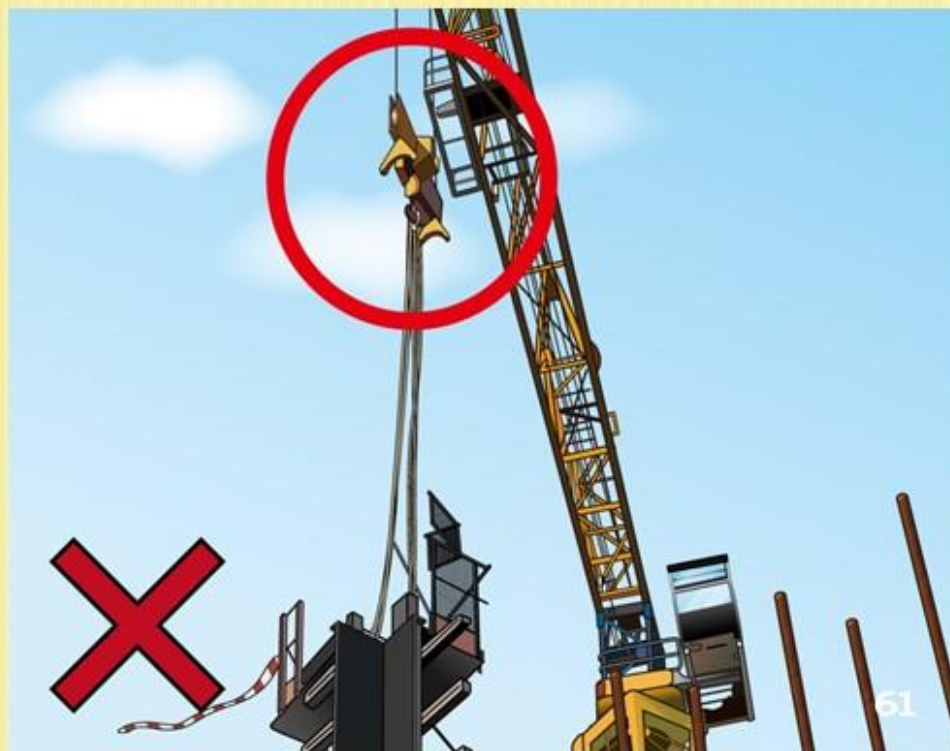
**SWL NOT DISPLAYED IN BOTH CHINESE
AND ENGLISH**



证书列明天秤是有四条吊索连接“虾头”，但现场发现天秤是两条吊索“虾头”

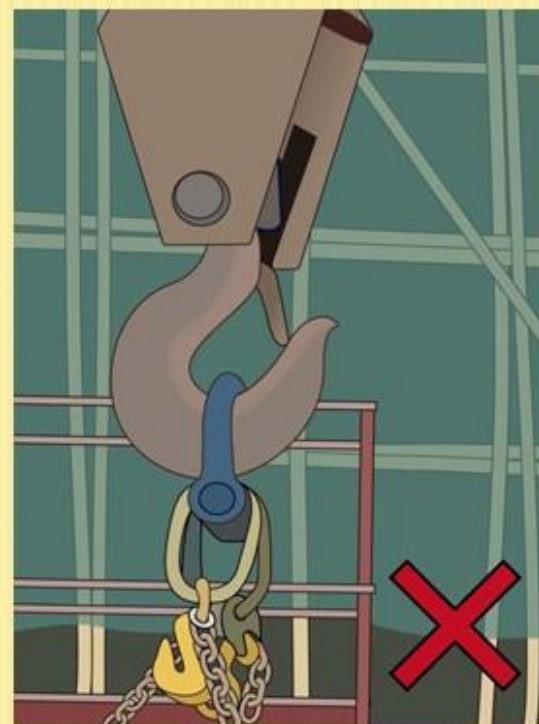
TOWER CRANE WAS IN TWO HOIST ROPES CONFIGURATION BUT THE STATUTORY FORM SPECIFIED THAT TESTING WAS CONDUCTED IN FOUR HOIST ROPES.

2. Name and address of maker of the appliance 機械製造廠名稱及地址	
3. Type of appliance and nature of power (e.g. Scotch derrick-manual; tower derrick-electric; rail mounted tower-electric) 機械類別及所使用的動力 (例如：蘇格蘭式人字起重機 - 人力；塔式人字起重機 - 電力；架設軌道的塔式起重機 - 電力)	Electric, Horizontal jib, Mast height 40m, Hoist rope = 4x ϕ 20mm. Free standing on foundation Equipped with "Top-tracing" anti-collision system



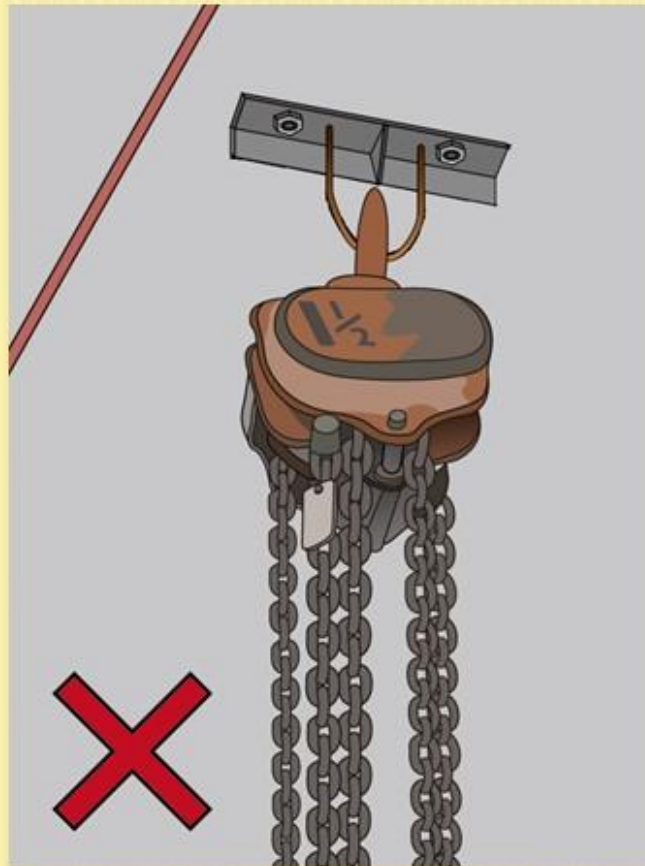
钩环的方向不正确 – 钩环杆应经常扣在吊钩上
钩环尺寸过小，引致钩环的方向错误

THE ORIENTATION OF SHACKLE WAS WRONG – THE JAW OF THE HOOK SHOULD FIT AROUND THE PIN OF SHACKLE.
THE SIZE OF SHACKLE SEEMS TOO SMALL AND THIS MAY LEAD TO THE WRONG ORIENTATION OF THE SHACKLE

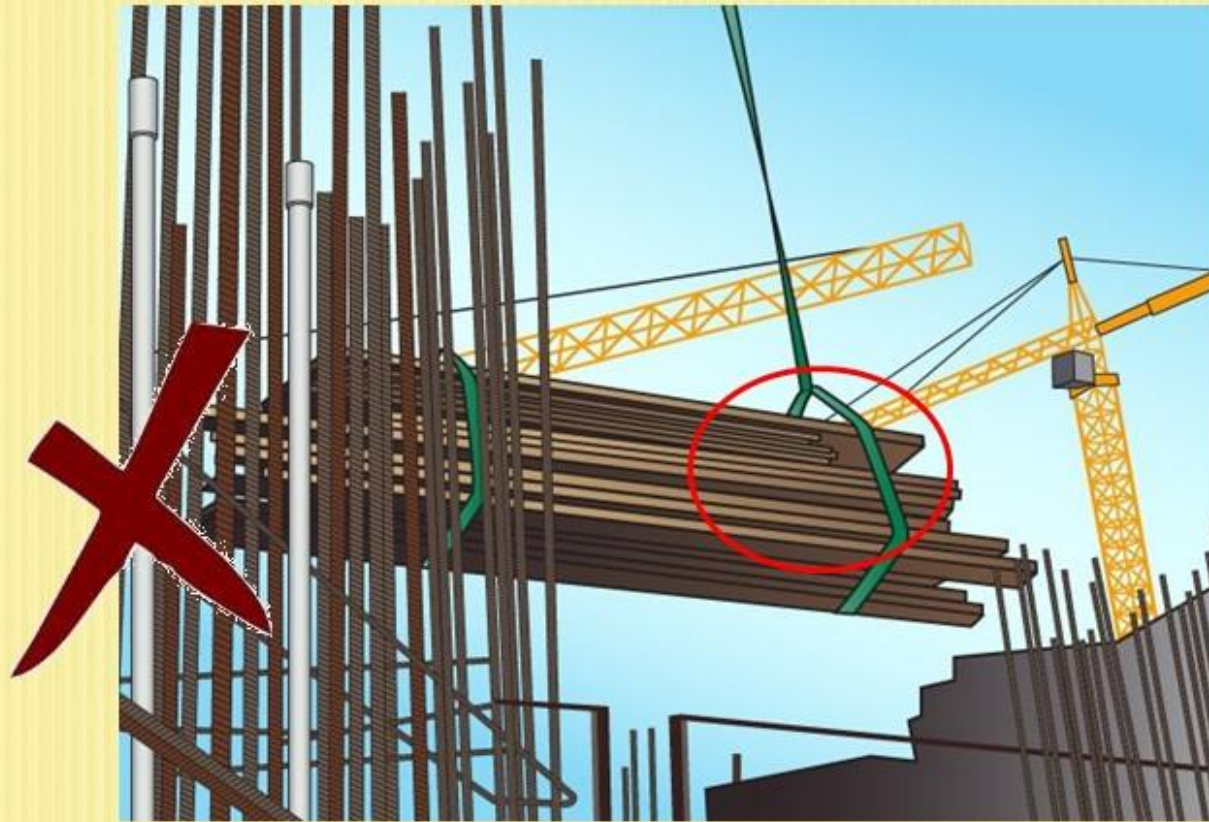


手动绞辘挂放于没有检验的挂勾上，而安全操作负荷亦没有以中文展示

MANUAL LIFTING APPLIANCE MOUNTED ON A BRACKET WITHOUT EXAMINATION CERTIFICATE AND THE SAFE WORKING LOAD WAS NOT MARKED IN CHINESE



没有使用稳固方法，吊运长短不一松散物料
INSECURE SLINGING OF LOOSE MATERIALS OF
IRREGULAR LENGTH



吊起预制楼梯的方法不正确：楼梯的四个吊眼中，只使用了两个
INCORRECT LIFTING OF THE FACADE STAIRCASE - ONLY
TWO OF THE FOUR LIFTING EYES WERE USED



物料斗没有清楚显示安全操作负荷 SWL WAS NOT MARKED ON RECEPTACLES.

