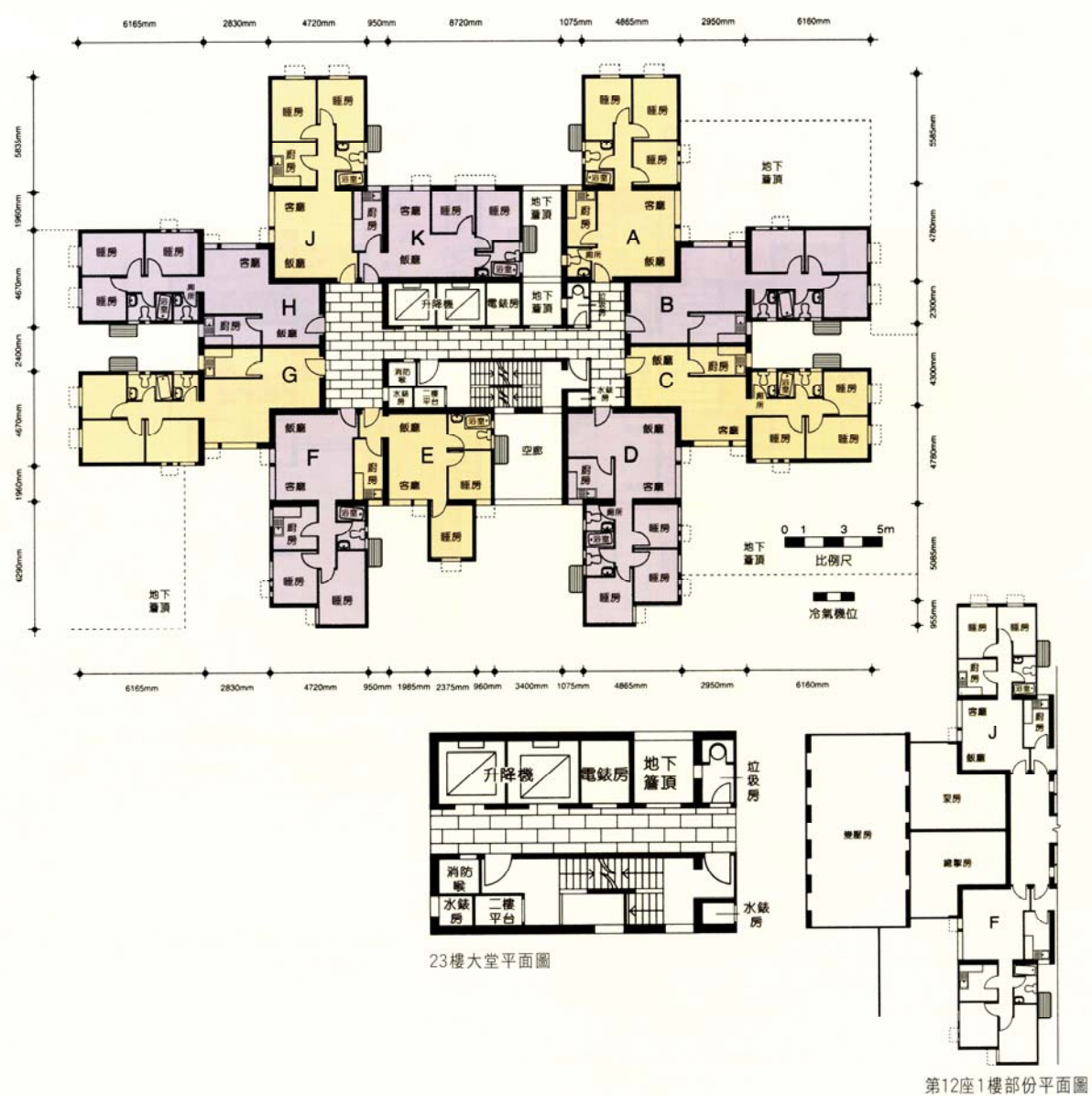


樓宇樣本平面圖

富榮花園第 12 座 1 樓至 23 樓

Typical Floor Plan

Charming Garden Block 12 1/F-23/F



樓宇樣本平面圖、附圖摘錄自2008年1月印製的出售剩餘居屋單位第3期的富榮花園資料摘要並根據其土物業發展有限公司所給予的准許而展示，只供參考。擬購買單位人士在購買單位前，應實地參觀並了解擬選購單位的現狀。

The typical floor plan, part plan are extracted from the information brochure of Charming Garden under the Sale of Surplus Home Ownership Scheme Flats Phase 3 printed in January 2008 and are displayed under a licence from Chevalier Property Development Limited, and are for reference only. Prior to purchasing a flat, prospective purchaser should carry out on-the-spot visit to get to know the existing condition of the flat.