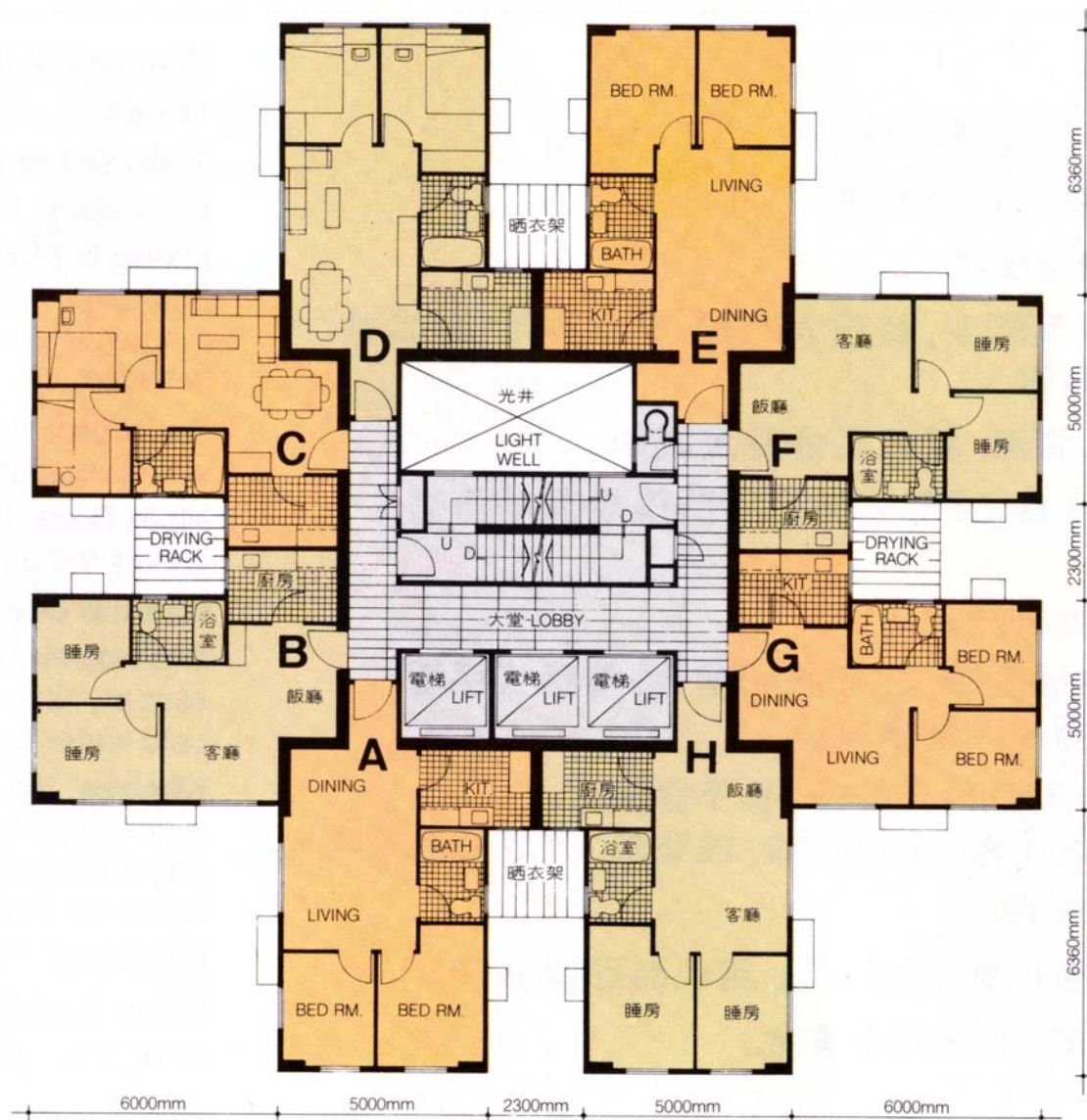


樓宇樣本平面圖  
大埔廣場宜興閣

Typical Floor Plan  
Tai Po Plaza Yee Hing Court



樓宇樣本平面圖、附圖摘錄自居者有其屋第 6 期甲的私人機構參與居屋計劃大埔廣場資料摘要並根據 Ascoli Enterprises Limited 所給予的准許而展示，只供參考。擬購買單位人士在購買單位前，應實地參觀並了解擬選購單位的現狀。

The typical floor plan, part plan are extracted from the information brochure of Tai Po Plaza under the Home Ownership Phase 6A Private Sector Participation Scheme and are displayed under a licence from Ascoli Enterprises Limited, and are for reference only. Prior to purchasing a flat, prospective purchaser should carry out on-the-spot visit to get to know the existing condition of the flat.