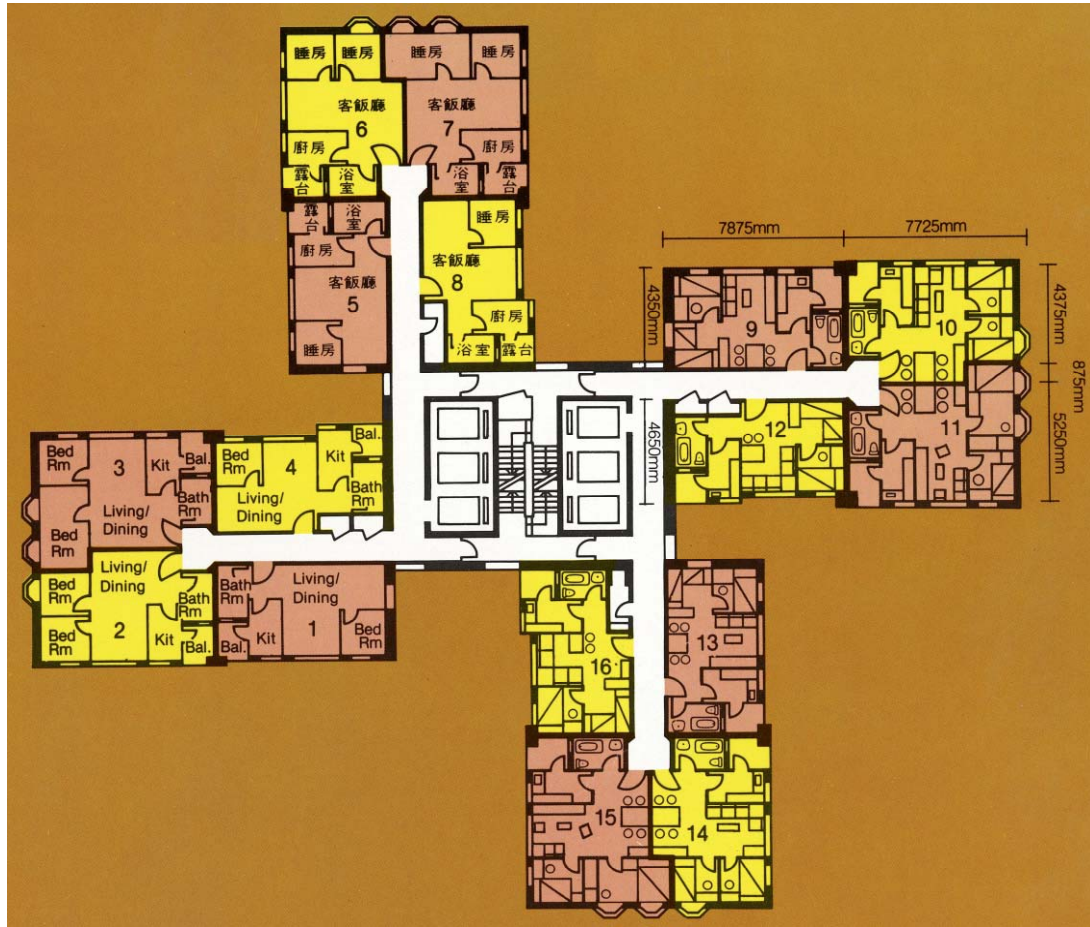


## 樓宇樣本平面圖

彩蒲苑彩瑩閣 (A 座)

## Typical Floor Plan

Choi Po Court Choi Ying House (Block A)



樓宇樣本平面圖、附圖摘錄自居者有其屋計劃第6期甲的彩蒲苑一期資料摘要,只供參考。擬購買單位人士在購買單位前,應實地參觀並了解擬選購單位的現狀。

The typical floor plan, part plan are extracted from the information brochure of Choi Po Court Phase I under the Home Ownership Scheme Phase 6A and are for reference only. Prior to purchasing a flat, prospective purchaser should carry out on-the-spot visit to get to know the existing condition of the flat.