

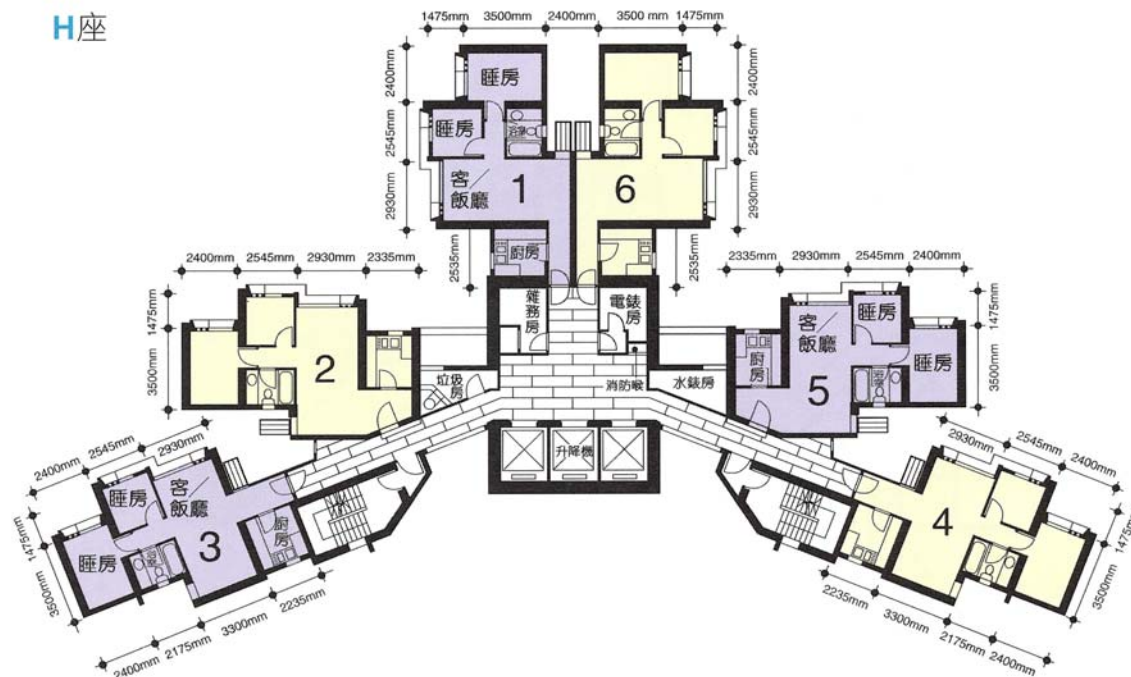
樓宇樣本平面圖

錦泰苑錦瑩閣 (H座) 1樓至40樓

Typical Floor Plan

Kam Tai Court Kam Ying House (Block H)

1/F-40/F



樓宇樣本平面圖、附圖摘錄自 2009 年 8 月印製的出售剩餘居屋單位第 5 期的錦泰苑資料摘要,只供參考。擬購買單位人士在購買單位前,應實地參觀並了解擬選購單位的現狀。

The typical floor plan, part plan are extracted from the information brochure of Kam Tai Court under the Sale of Surplus Home Ownership Scheme Flats Phase 5 printed in August 2009 and are for reference only. Prior to purchasing a flat, prospective purchaser should carry out on-the-spot visit to get to know the existing condition of the flat.