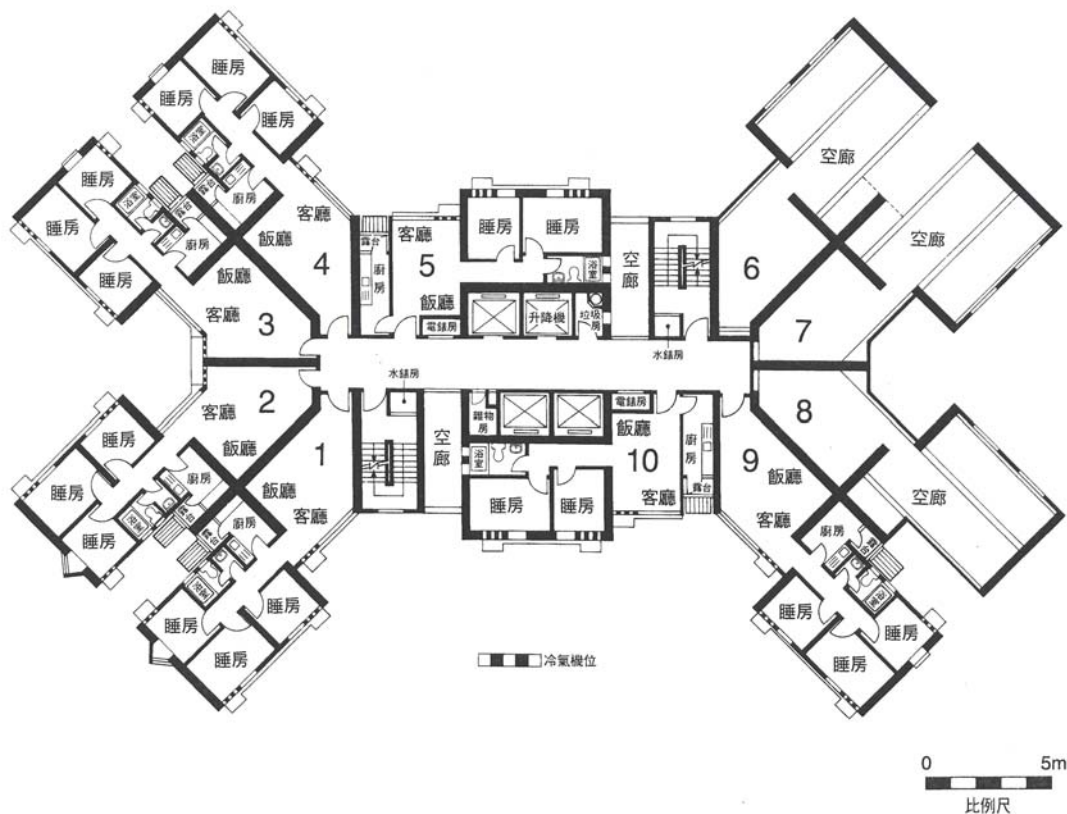


樓宇樣本平面圖

葵康苑葵明閣 (A座) 2樓至3樓

Typical Floor Plan

Kwai Hong Court Kwai Ming House (Block A)
2/F-3/F



樓宇樣本平面圖、附圖摘錄自1992年12月印製的居者有其屋計劃第14期丙的葵康苑售樓書,只供參考。擬購買單位人士在購買單位前,應實地參觀並了解擬選購單位的現狀。

The typical floor plan, part plan are extracted from the sales brochure of Kwai Hong Court under the Home Ownership Scheme Phase 14C printed in December 1992 and are for reference only. Prior to purchasing a flat, prospective purchaser should carry out on-the-spot visit to get to know the existing condition of the flat.