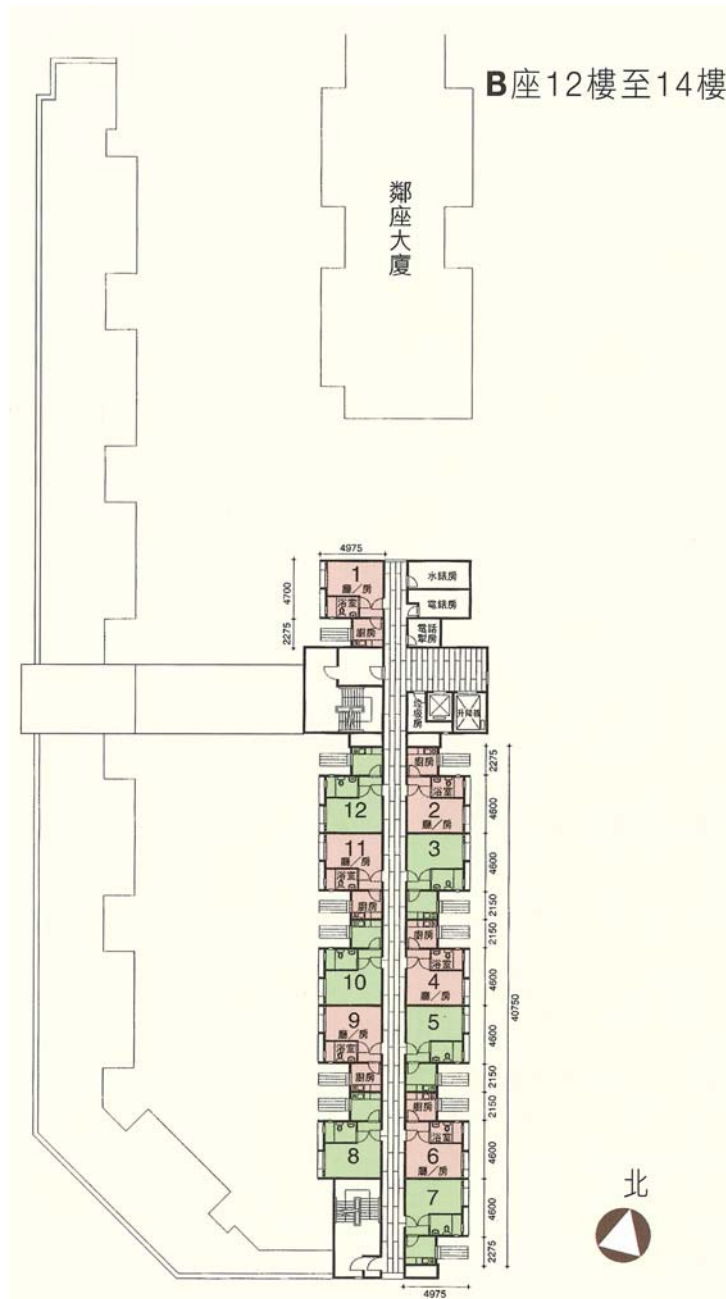


樓宇樣本平面圖

冠暉苑高暉閣 (B座) 12樓至14樓

Typical Floor Plan

Kwun Fai Court Ko Fai House (Block B)  
12/F-14/F



樓宇樣本平面圖、附圖摘錄自 2007 年 7 月印製的出售剩餘居屋單位第 2 期的冠暉苑資料摘要,只供參考。擬購買單位人士在購買單位前,應實地參觀並了解擬選購單位的現狀。

The typical floor plan, part plan are extracted from the information brochure of Kwun Fai Court under the Sale of Surplus Home Ownership Scheme Flats Phase 2 printed in July 2007 and are for reference only. Prior to purchasing a flat, prospective purchaser should carry out on-the-spot visit to get to know the existing condition of the flat.