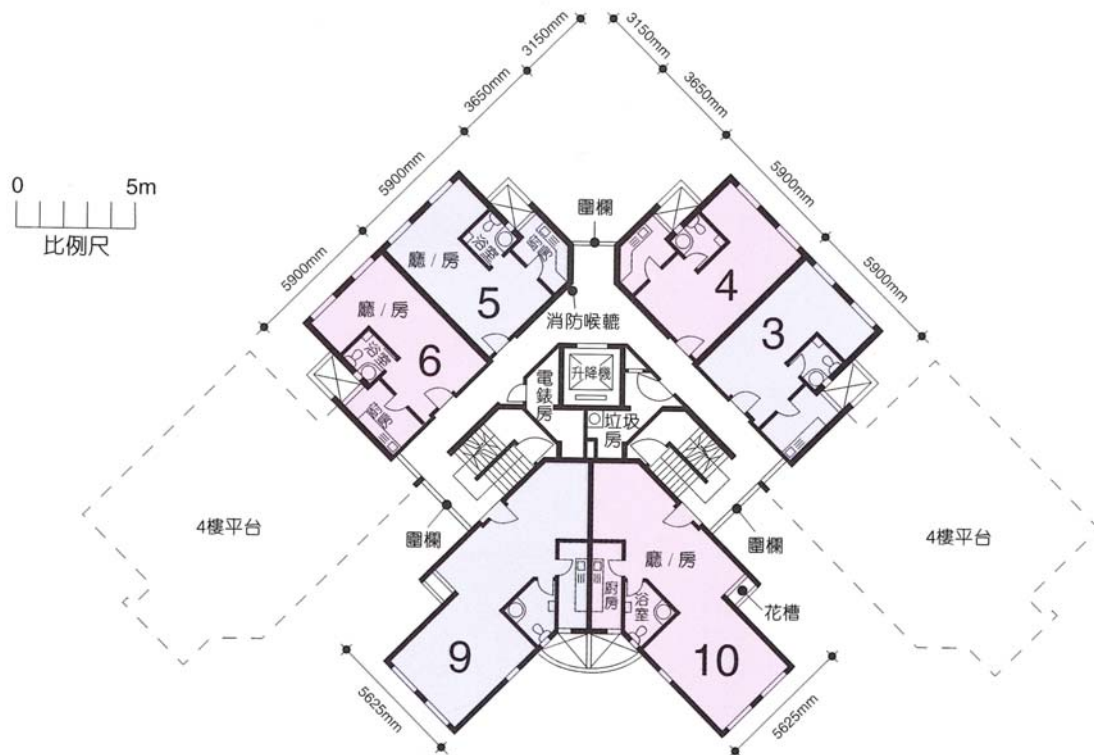


樓宇樣本平面圖

龍軒苑錦軒閣 (A座) 5樓

Typical Floor Plan

Lung Hin Court Kam Hin House (Block A) 5/F



樓宇樣本平面圖摘錄自1999年4月印製的居者有其屋計劃第20期乙的龍軒苑售樓書,只供參考。擬購買單位人士在購買單位前,應實地參觀並了解擬選購單位的現狀。

The typical floor plan are extracted from the sales brochure of Lung Hin Court under the Home Ownership Scheme Phase 20B printed in April 1999 and are for reference only. Prior to purchasing a flat, prospective purchaser should carry out on-the-spot visit to get to know the existing condition of the flat.