

樓宇樣本平面圖

龍軒苑鱗軒閣 (B座) 2樓至3樓

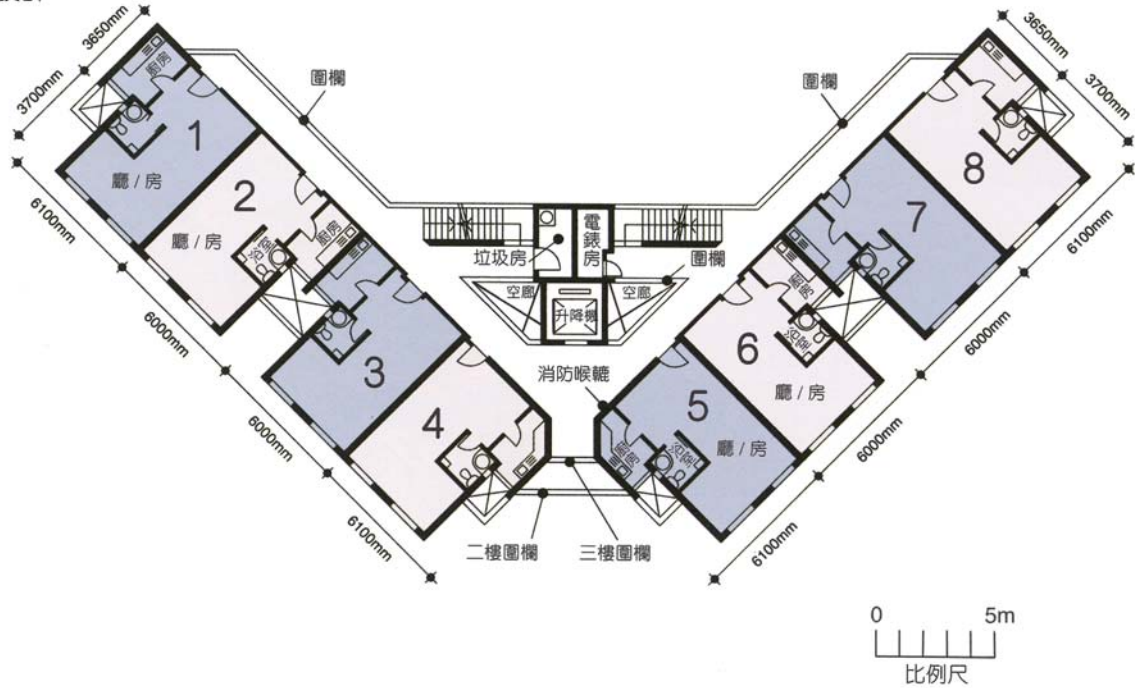
Typical Floor Plan

Lung Hin Court Lun Hin House (Block B) 2/F-3/F

樓宇樣本平面圖

B座及D座2樓至3樓

特別設計



樓宇樣本平面圖、附圖摘錄自2010年5月印製的出售剩餘居屋單位第6期的龍軒苑資料摘要,只供參考。擬購買單位人士在購買單位前,應實地參觀並了解擬選購單位的現狀。

The typical floor plan, part plan are extracted from the information brochure of Lung Hin Court under the Sale of Surplus Home Ownership Scheme Flats Phase 6 printed in May 2010 and are for reference only. Prior to purchasing a flat, prospective purchaser should carry out on-the-spot visit to get to know the existing condition of the flat.