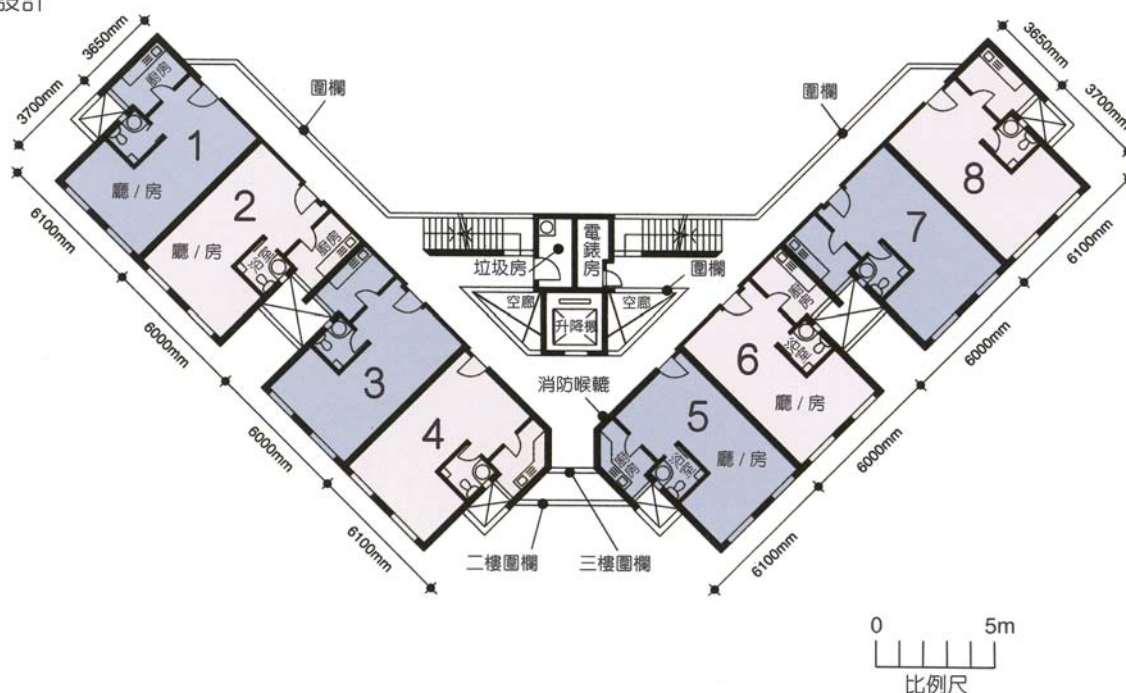


樓宇樣本平面圖
龍軒苑永軒閣 (D座) 2樓至3樓

Typical Floor Plan
Lung Hin Court Wing Hin House (Block D)
2/F-3/F

樓宇樣本平面圖

B座及D座2樓至3樓
特別設計



樓宇樣本平面圖、附圖摘錄自2010年5月印製的出售剩餘居屋單位第6期的龍軒苑資料摘要,只供參考。
擬購買單位人士在購買單位前,應實地參觀並了解擬選購單位的現狀。

The typical floor plan, part plan are extracted from the information brochure of Lung Hin Court under the Sale of Surplus Home Ownership Scheme Flats Phase 6 printed in May 2010 and are for reference only. Prior to purchasing a flat, prospective purchaser should carry out on-the-spot visit to get to know the existing condition of the flat.