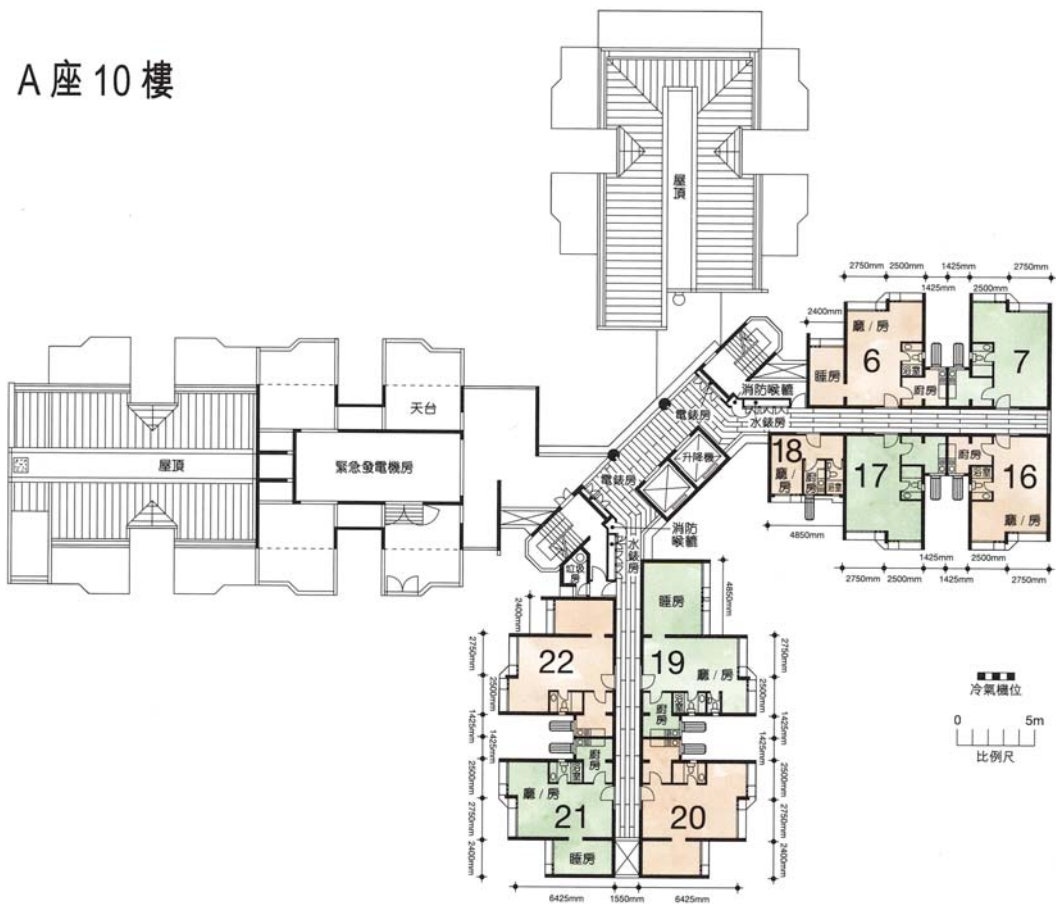


### 樓宇樣本平面圖

龍德苑晉德閣 (A座) 10樓

### Typical Floor Plan

Lung Tak Court Chun Tak House (Block A)  
10/F



樓宇樣本平面圖摘錄自2000年5月印製的居者有其屋計劃第22期甲的龍德苑售樓書,只供參考。擬購買單位人士在購買單位前,應實地參觀並了解擬選購單位的現狀。

The typical floor plan are extracted from the sales brochure of Lung Tak Court under the Home Ownership Scheme Phase 22A printed in May 2000 and are for reference only. Prior to purchasing a flat, prospective purchaser should carry out on-the-spot visit to get to know the existing condition of the flat.