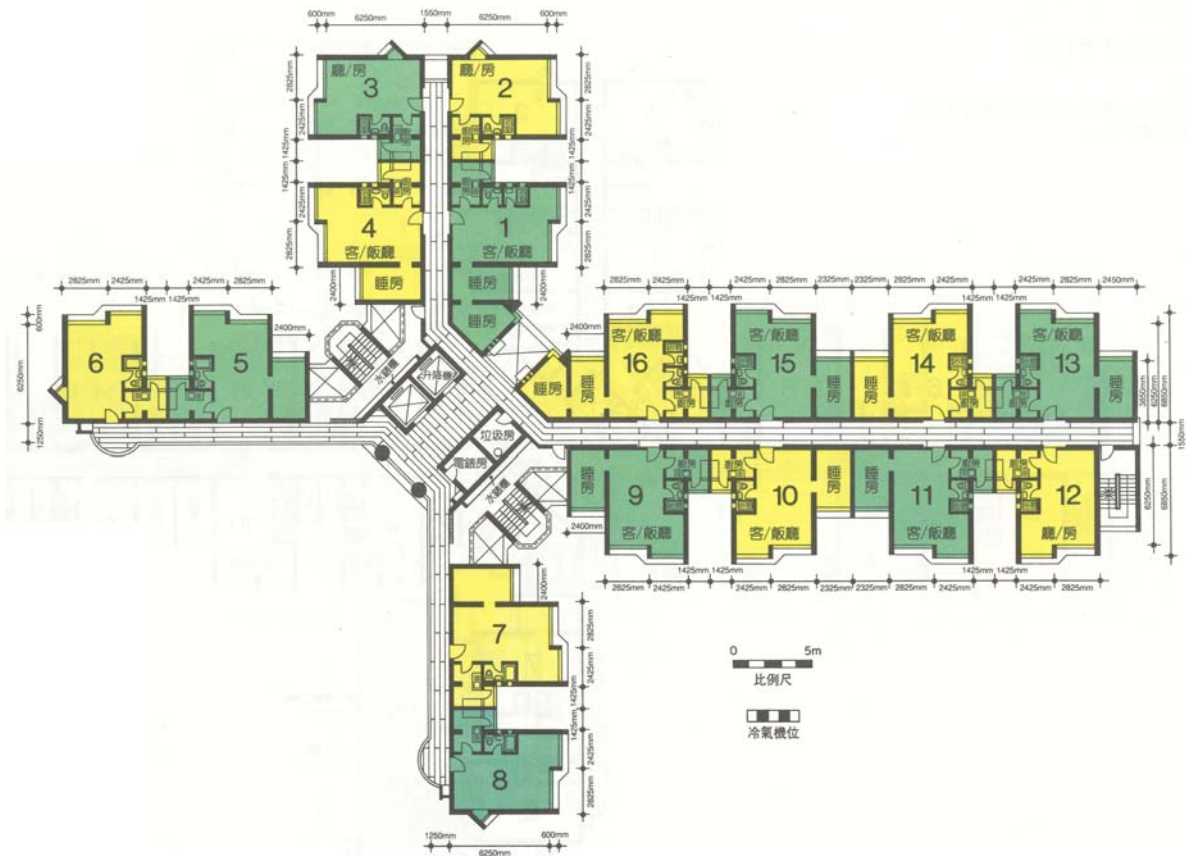


樓宇樣本平面圖

龍欣苑龍俊閣 (A座) 1樓至10樓

Typical Floor Plan

Lung Yan Court Lung Chun House (Block A)
1/F-10/F



樓宇樣本平面圖、附圖摘錄自1993年4月印製的居者有其屋計劃第15期甲的龍欣苑售樓書,只供參考。擬購買單位人士在購買單位前,應實地參觀並了解擬選購單位的現狀。

The typical floor plan, part plan are extracted from the sales brochure of Lung Yan Court under the Home Ownership Scheme Phase 15A printed in April 1993 and are for reference only. Prior to purchasing a flat, prospective purchaser should carry out on-the-spot visit to get to know the existing condition of the flat.