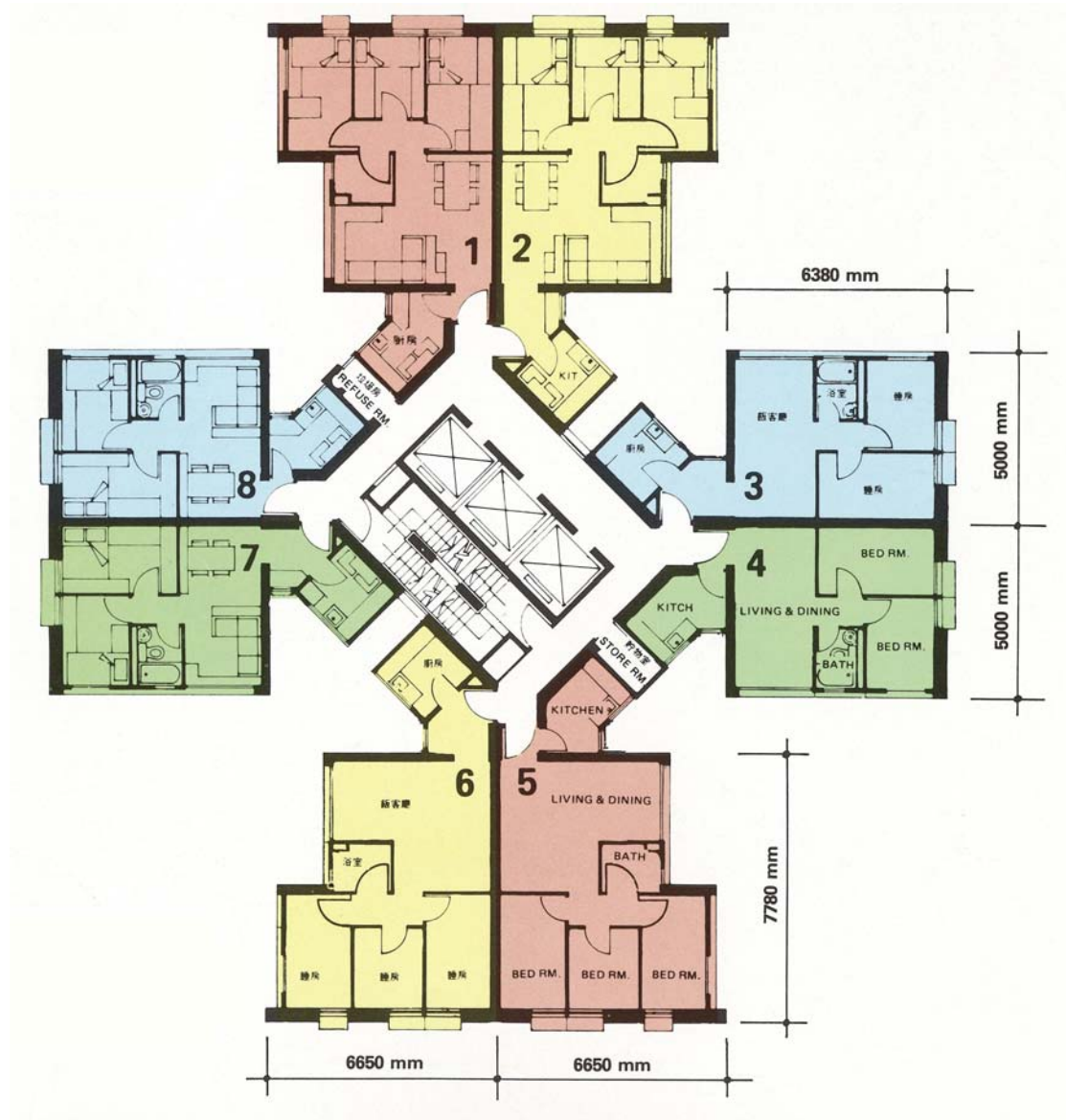


樓宇樣本平面圖
安基苑基信閣 (B 座)

Typical Floor Plan
On Kay Court Kay Shun House (Block B)



樓宇樣本平面圖、附圖摘錄自居者有其屋計劃第3期乙的安基苑資料摘要,只供參考。擬購買單位人士在購買單位前,應實地參觀並了解擬選購單位的現狀。
The typical floor plan, part plan are extracted from the information brochure of On Kay Court under the Home Ownership Scheme Phase 3B and are for reference only. Prior to purchasing a flat, prospective purchaser should carry out on-the-spot visit to get to know the existing condition of the flat.