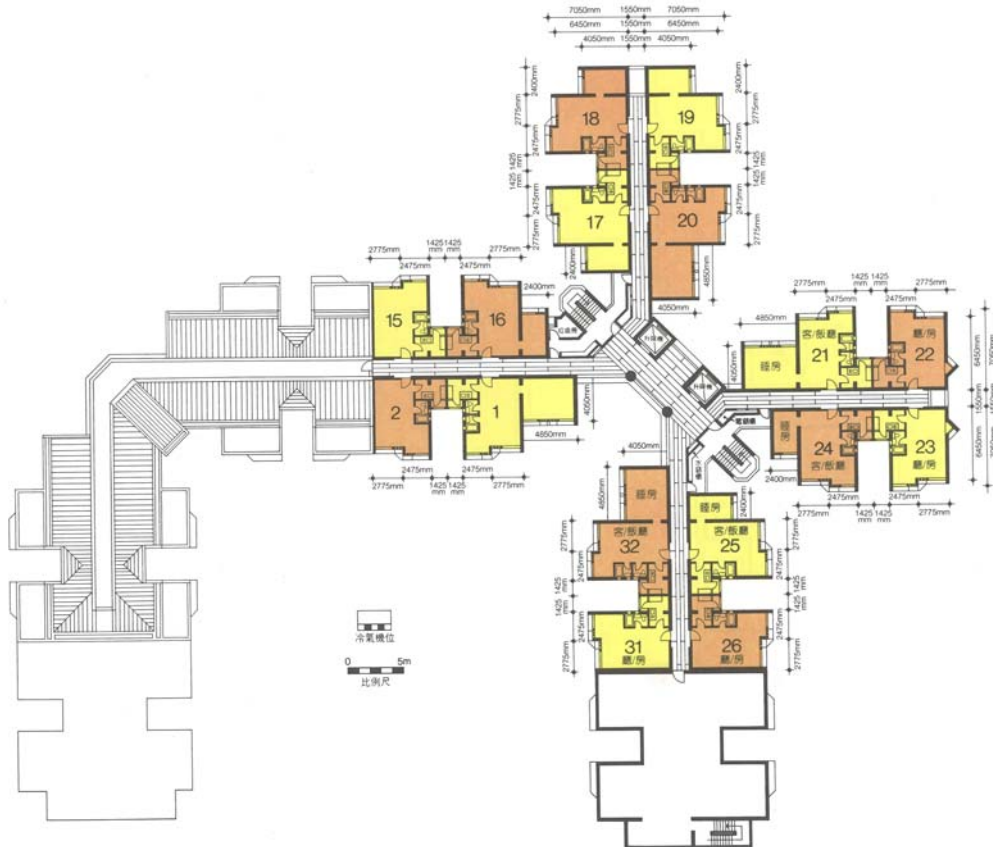


樓宇樣本平面圖
坪麗苑 5 樓

Typical Floor Plan
Peng Lai Court 5/F



樓宇樣本平面圖、附圖摘錄自1994年9月印製的居者有其屋計劃第16期乙的坪麗苑售樓書,只供參考。擬購買單位人士在購買單位前,應實地參觀並了解擬選購單位的現狀。

The typical floor plan, part plan are extracted from the sales brochure of Peng Lai Court under the Home Ownership Scheme Phase 16B printed in September 1994 and are for reference only. Prior to purchasing a flat, prospective purchaser should carry out on-the-spot visit to get to know the existing condition of the flat.