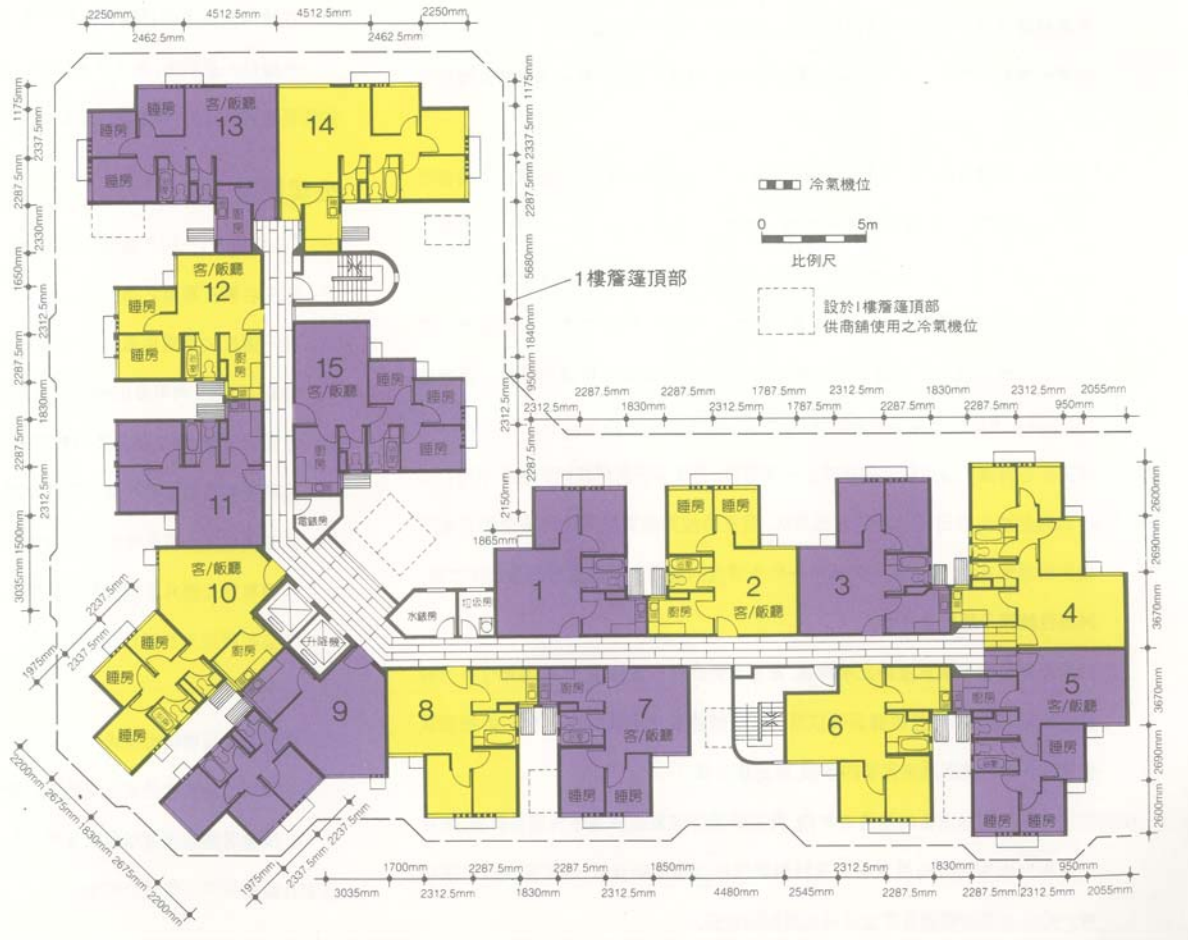


# 樓宇樣本平面圖

寶熙苑富熙閣 (A座) 1樓至13樓

# Typical Floor Plan

Po Hei Court Fu Hei House (Block A) 1/F-13/F



樓宇樣本平面圖、附圖摘錄自1992年8月印製的居者有其屋計劃第14期乙的寶熙苑售樓書,只供參考。擬購買單位人士在購買單位前,應實地參觀並了解擬選購單位的現狀。

The typical floor plan, part plan are extracted from the sales brochure of Po Hei Court under the Home Ownership Scheme Phase 14B printed in August 1992 and are for reference only. Prior to purchasing a flat, prospective purchaser should carry out on-the-spot visit to get to know the existing condition of the flat.