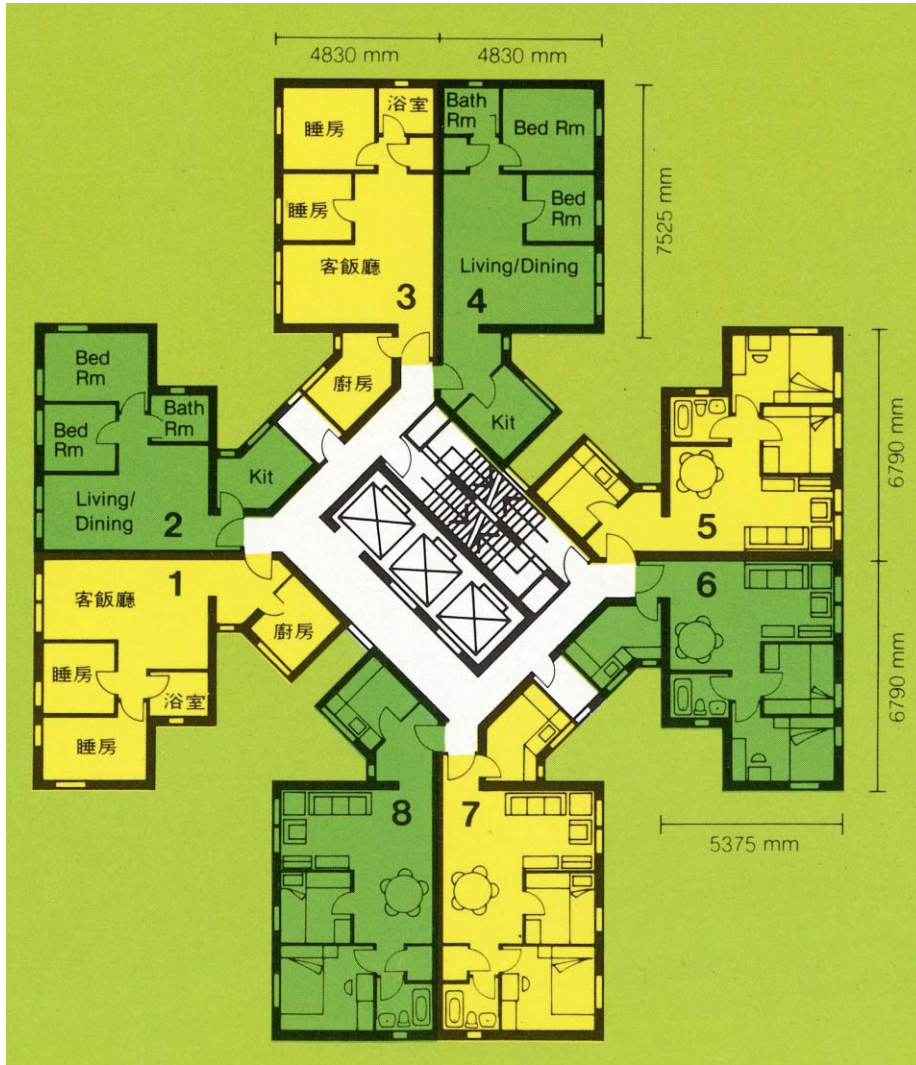


樓宇樣本平面圖

兆康苑兆寧閣 (S 座)

Typical Floor Plan

Siu Hong Court Siu Ning House (Block S)



樓宇樣本平面圖、附圖摘錄自居者有其屋計劃第6期甲的兆康苑四期資料摘要,只供參考。擬購買單位人士在購買單位前,應實地參觀並了解擬選購單位的現狀。

The typical floor plan, part plan are extracted from the information brochure of Siu Hong Court Phase IV under the Home Ownership Scheme Phase 6A and are for reference only. Prior to purchasing a flat, prospective purchaser should carry out on-the-spot visit to get to know the existing condition of the flat.