

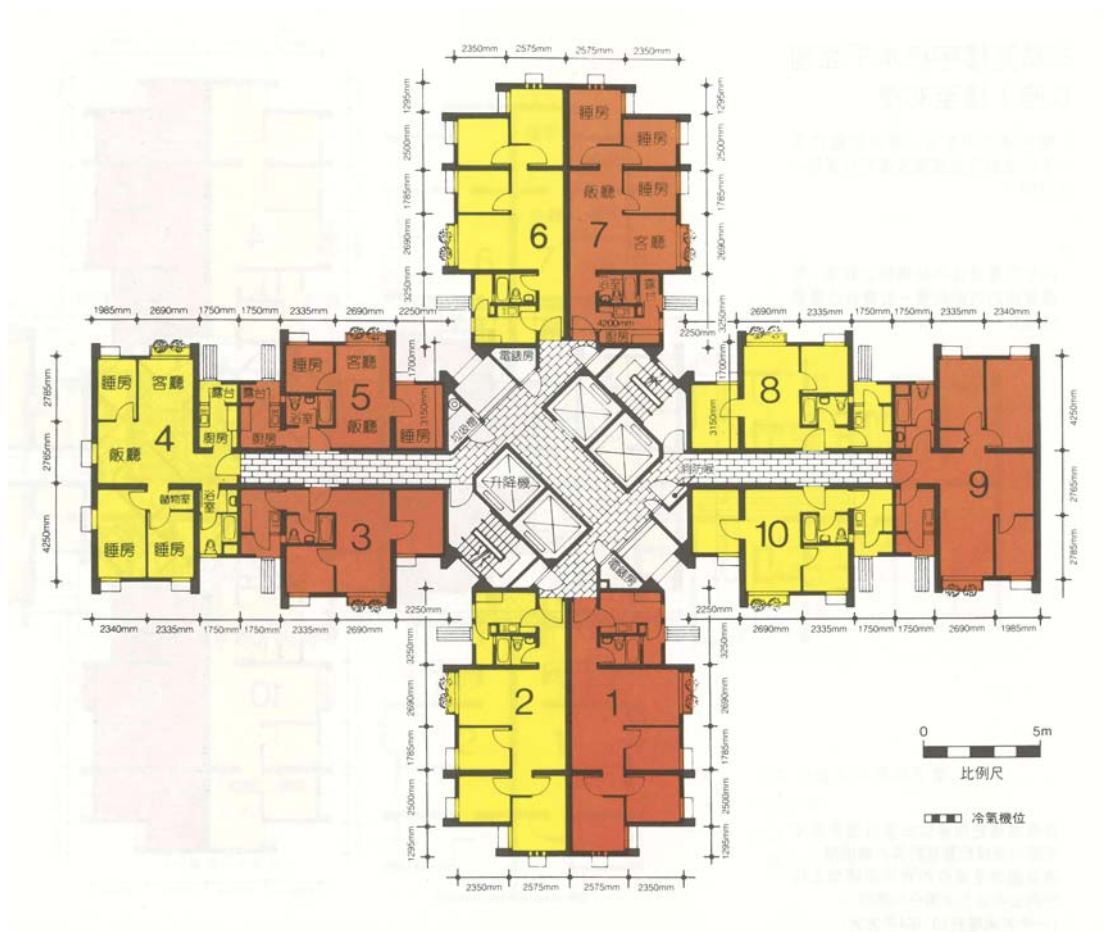
樓宇樣本平面圖

兆麟苑銀麟閣 (A座) 1樓至35樓

Typical Floor Plan

Siu Lun Court Ngan Lun House (Block A)

1/F-35/F



樓宇樣本平面圖、附圖摘錄自1991年8月印製的居者有其屋計劃第13期乙的兆麟苑一期售樓書,只供參考。擬購買單位人士在購買單位前,應實地參觀並了解擬選購單位的現狀。

The typical floor plan, part plan are extracted from the sales brochure of Siu Lun Court Phase I under the Home Ownership Scheme Phase 13B printed in August 1991 and are for reference only. Prior to purchasing a flat, prospective purchaser should carry out on-the-spot visit to get to know the existing condition of the flat.