

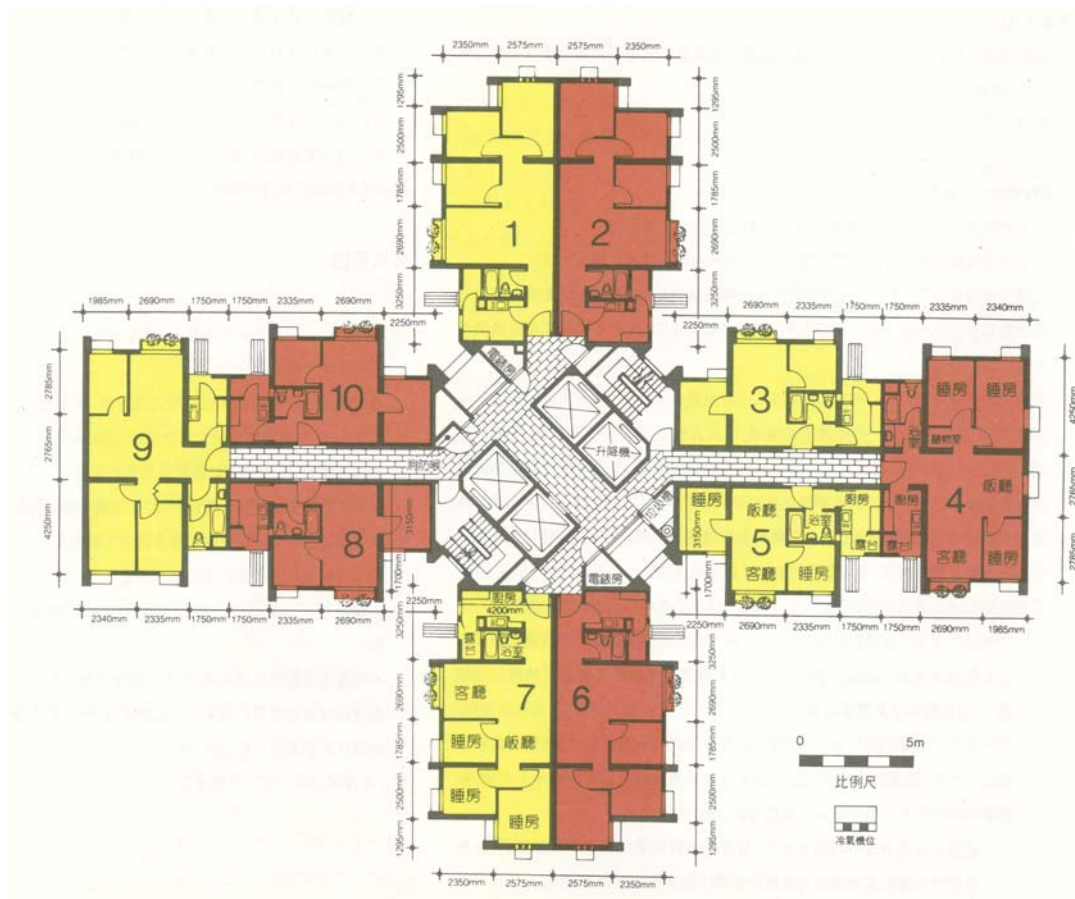
樓宇樣本平面圖

兆麟苑瑞麟閣 (E座) 1樓至35樓

Typical Floor Plan

Siu Lun Court Sui Lun House (Block E)

1/F-35/F



樓宇樣本平面圖、附圖摘錄自1993年7月印製的居者有其屋計劃第15期乙的兆麟苑四期售樓書,只供參考。擬購買單位人士在購買單位前,應實地參觀並了解擬選購單位的現狀。

The typical floor plan, part plan are extracted from the sales brochure of Siu Lun Court Phase IV under the Home Ownership Scheme Phase 15B printed in July 1993 and are for reference only. Prior to purchasing a flat, prospective purchaser should carry out on-the-spot visit to get to know the existing condition of the flat.