

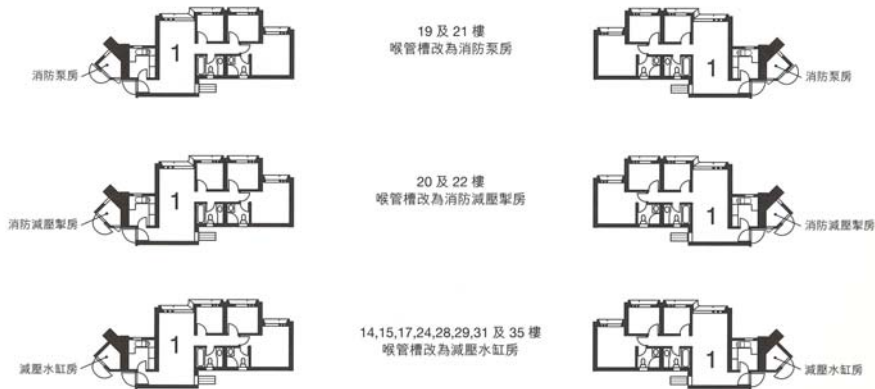
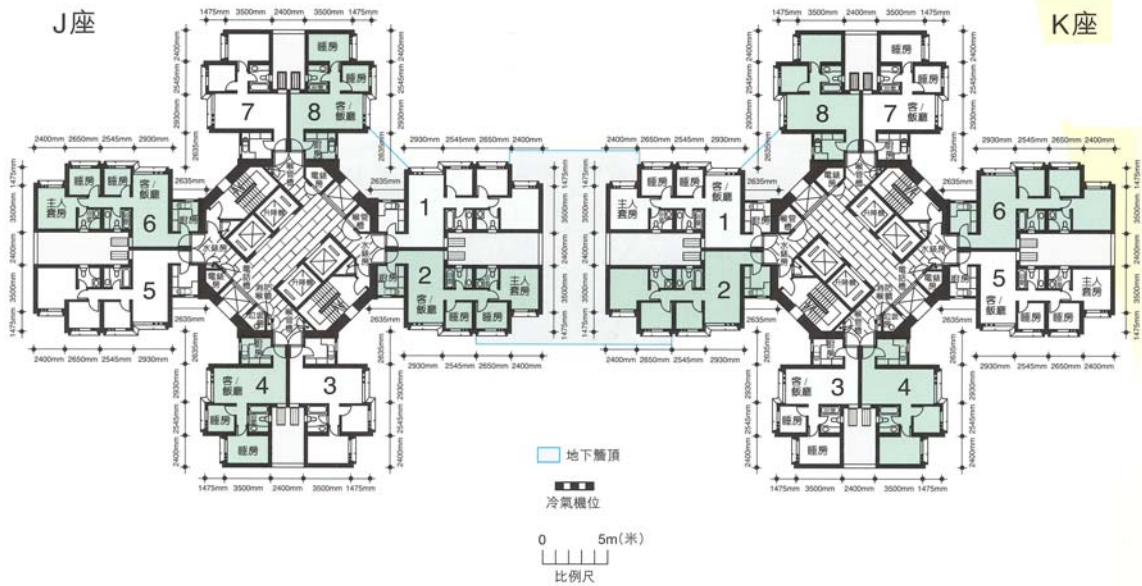
樓宇樣本平面圖

天富苑賢富閣 (K座) 1樓至40樓

Typical Floor Plan

Tin Fu Court Yin Fu House (Block K) 1/F-40/F

康和式一型設計•1樓至40樓



樓宇樣本平面圖、附圖摘錄自 2008 年 7 月印製的出售剩餘居屋單位第 4 期的天富苑售樓書,只供參考。擬購買單位人士在購買單位前,應實地參觀並了解擬選購單位的現狀。

The typical floor plan, part plan are extracted from the sales brochure of Tin Fu Court under the Sale of Surplus Home Ownership Scheme Flats Phase 4 printed in July 2008 and are for reference only. Prior to purchasing a flat, prospective purchaser should carry out on-the-spot visit to get to know the existing condition of the flat.