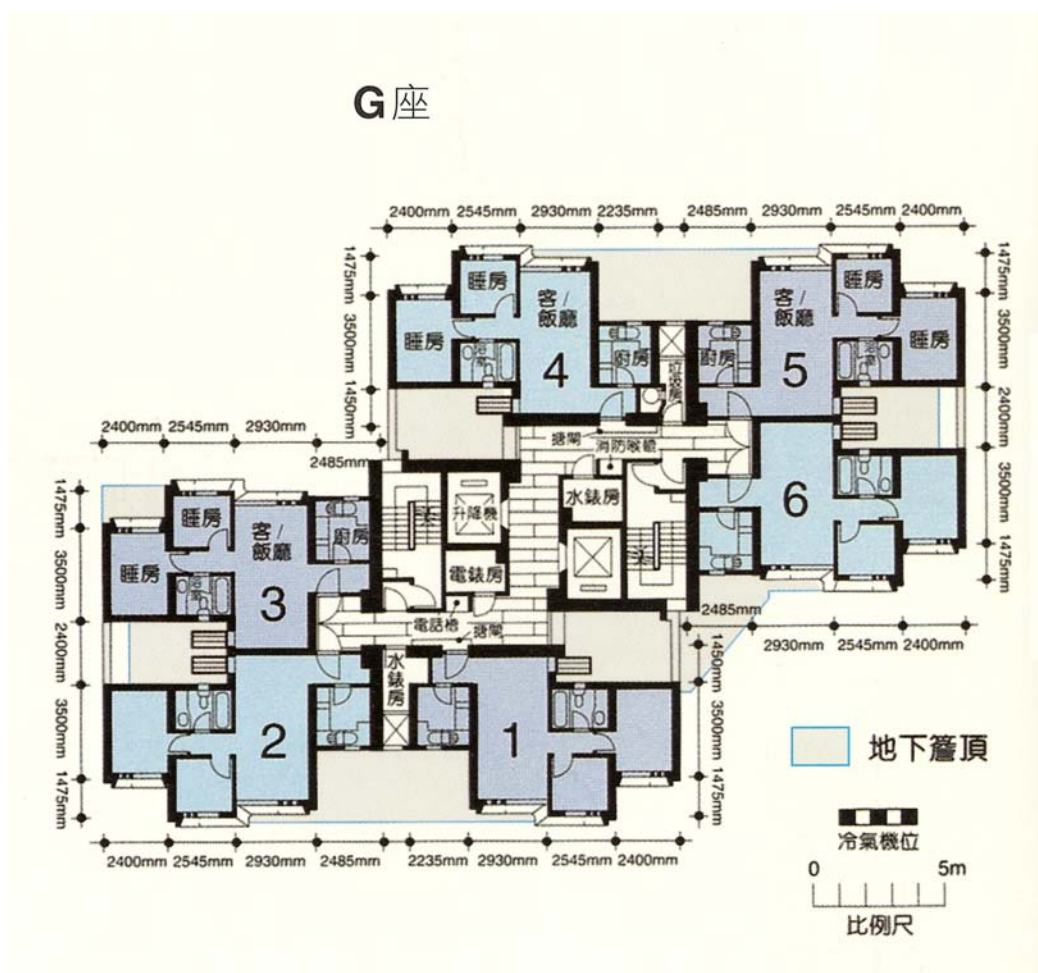


樓宇樣本平面圖

天盛苑盛匯閣 (G 座) 1 樓至 30 樓

Typical Floor Plan

Tin Shing Court Shing Wui House (Block G)
1/F-30/F



樓宇樣本平面圖、附圖摘錄自2007年7月印製的出售剩餘居屋單位第2期的天盛苑資料摘要,只供參考。擬購買單位人士在購買單位前,應實地參觀並了解擬選購單位的現狀。

The typical floor plan, part plan are extracted from the information brochure of Tin Shing Court under the Sale of Surplus Home Ownership Scheme Flats Phase 2 printed in July 2007 and are for reference only. Prior to purchasing a flat, prospective purchaser should carry out on-the-spot visit to get to know the existing condition of the flat.