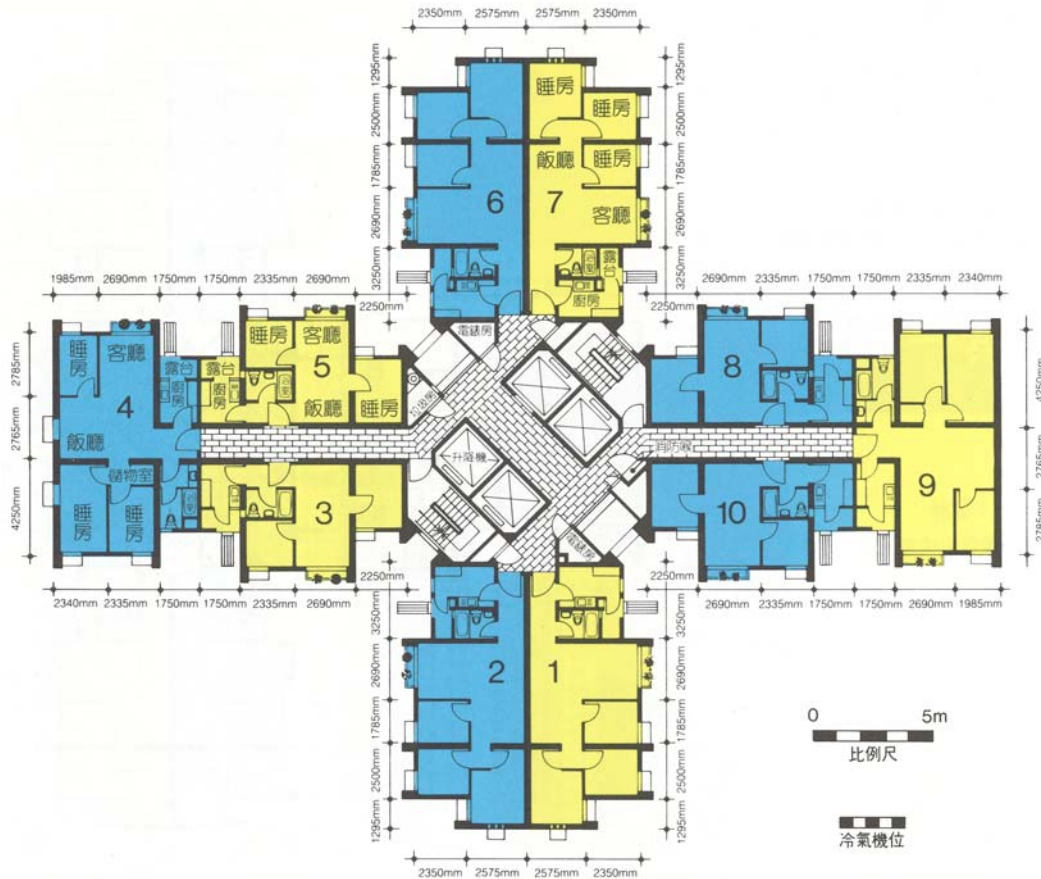


樓宇樣本平面圖

慈愛苑愛賢閣 (B座) 1樓至35樓

Typical Floor Plan

Tsz Oi Court Oi Yin House (Block B) 1/F-35/F



樓宇樣本平面圖摘錄自1995年4月印製的居者有其屋計劃第17期甲的慈愛苑售樓書,只供參考。擬購買單位人士在購買單位前,應實地參觀並了解擬選購單位的現狀。

The typical floor plan are extracted from the sales brochure of Tsz Oi Court under the Home Ownership Scheme Phase 17A printed in April 1995 and are for reference only. Prior to purchasing a flat, prospective purchaser should carry out on-the-spot visit to get to know the existing condition of the flat.