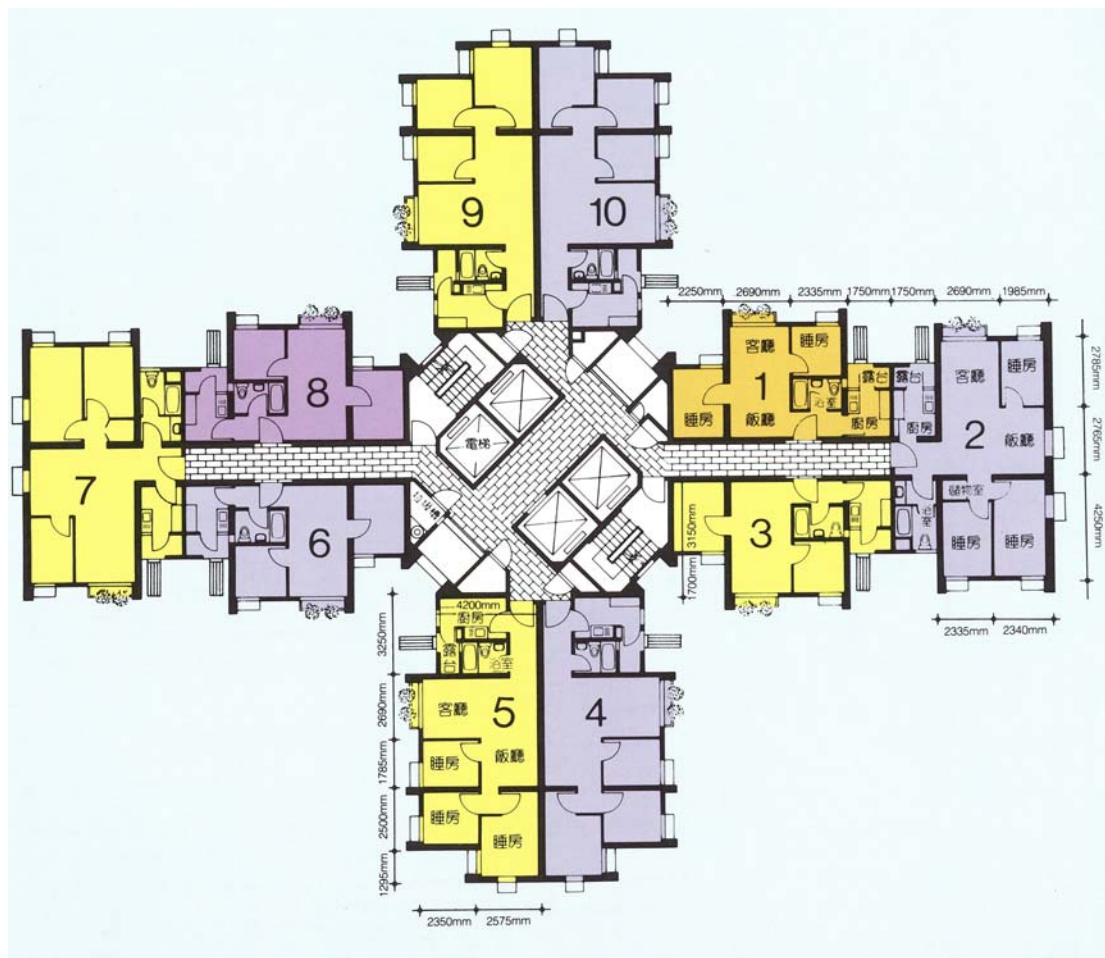


## 樓宇樣本平面圖

欣明苑欣蘭閣 (D座) 1樓至35樓

## Typical Floor Plan

Yan Ming Court Yan Lan House (Block D)  
1/F-35/F



樓宇樣本平面圖、附圖摘錄自1989年7月印製的居者有其屋計劃第11期乙的欣明苑資料摘要,只供參考。擬購買單位人士在購買單位前,應實地參觀並了解擬選購單位的現狀。

The typical floor plan, part plan are extracted from the information brochure of Yan Ming Court under the Home Ownership Scheme Phase 11B printed in July 1989 and are for reference only. Prior to purchasing a flat, prospective purchaser should carry out on-the-spot visit to get to know the existing condition of the flat.