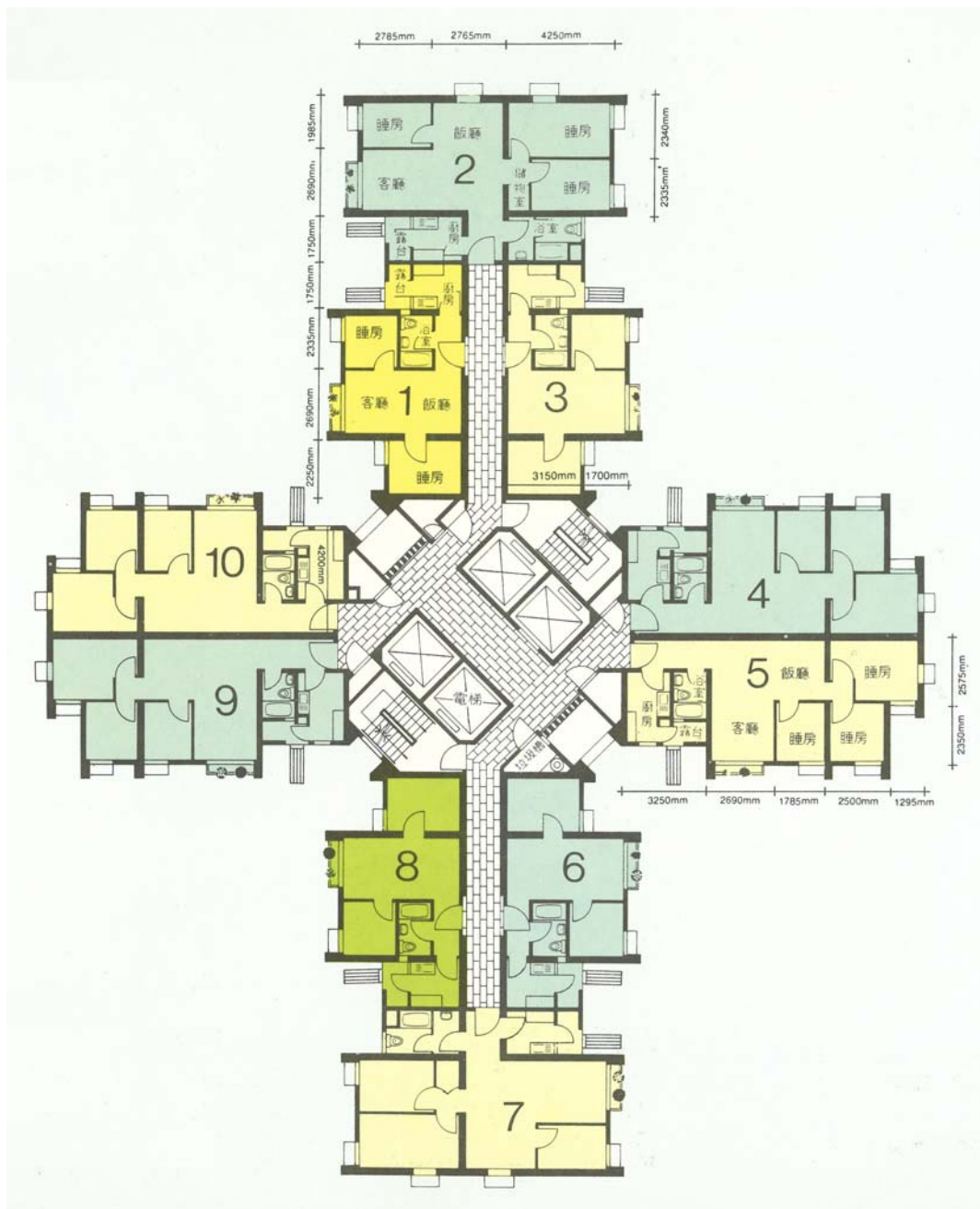


## 樓宇樣本平面圖

英明苑明安閣 (E 座) 1 樓至 35 樓

## Typical Floor Plan

Ying Ming Court Ming On House (Block E)  
1/F-35/F



樓宇樣本平面圖、附圖摘錄自居者有其屋計劃第10期乙的英明苑資料摘要,只供參考。擬購買單位人士在購買單位前,應實地參觀並了解擬選購單位的現狀。

The typical floor plan, part plan are extracted from the information brochure of Ying Ming Court under the Home Ownership Scheme Phase 10B and are for reference only. Prior to purchasing a flat, prospective purchaser should carry out on-the-spot visit to get to know the existing condition of the flat.