

裝置、裝修物料及設備

Fittings, Finishes and Appliances

1.	外部裝修物料 Exterior finishes	
(a)	外牆 External wall	以玻璃紙皮石鋪砌及髹上乳膠漆 Finished with glass mosaic wall tiles and emulsion paint
(b)	窗 Window	選用鋁質窗框配清玻璃 Fitted with aluminum window frame with clear glass panel
(c)	窗台 Bay window	不適用 Not Applicable
(d)	花槽 Planter	以玻璃紙皮石鋪砌 Finished with glass mosaic wall tiles
(e)	陽台或露台 Verandah or balcony	不適用 Not Applicable
(f)	乾衣設施 Drying facilities for clothing	不適用 Not Applicable
2.	室內裝修物料 Interior finishes	
(a)	大堂 Lobby	<p>地下主入口大堂： 牆壁以紙皮石及瓷磚鋪砌。地板以瓷磚及人造麻石磚鋪砌配以洗水石米牆腳線。天花板髹上乳膠漆。</p> <p>Ground floor Lobby: Walls are finished with mosaic tiles and ceramic tiles. Floor is finished with ceramic tiles and artificial granite tiles with washed granolith skirting. Ceiling is finished with emulsion paint.</p> <p>標準樓層升降機大堂： 牆壁以紙皮石鋪砌。地板以瓷磚鋪砌配以洗水石米牆腳線。天花板髹上乳膠漆。</p> <p>Typical floor lobby: Walls are finished with mosaic tiles. Floor is finished with ceramic tiles with washed granolith skirting. Ceiling is finished with emulsion paint.</p>

(b)	內牆及天花板 Internal wall and ceiling	客/飯廳的牆壁及天花板髹上乳膠漆。 Walls and ceilings of living / dining room are finished with emulsion paint.
(c)	內部地板 Internal floor	客/飯廳的地板為自動流平地台。所有單位並未設有牆腳線。 Floor of living / dining room is finished with self-leveling cementitious flooring system. No skirting is provided for all flats.
(d)	浴室 Bathroom	牆壁以瓷磚鋪砌至天花板。地板以過底磚鋪砌配以過底磚牆腳線。天花板髹上乳膠漆。 Walls are finished with glazed ceramic tiles up to the ceiling. Floor is finished with homogenous tiles with homogenous tiles skirting. Ceiling is finished with emulsion paint.
(e)	廚房 Kitchen	<p>所有單位(106, 203, 206, 505, 507, 508, 604, 607, 801, 803, 806, 1003, 1104, 1106及 701室除外) : 牆壁以瓷磚鋪砌至天花板。地板以瓷磚鋪砌。天花板髹上乳膠漆。灶台面為不銹鋼。</p> <p>106, 203, 206, 505, 507, 508, 604, 607, 801, 803, 806, 1003, 1104 及1106室 : 牆壁以瓷磚鋪砌至天花板。地板以過底磚鋪砌配以過底磚牆腳線。天花板髹上乳膠漆。灶台面為不銹鋼。</p> <p>701室 : 牆壁以瓷磚鋪砌至天花板。地板以過底磚鋪砌。天花板髹上乳膠漆。灶台面為不銹鋼。</p> <p>All Flats (except Flats 106, 203, 206, 505, 507, 508, 604, 607, 801, 803, 806, 1003, 1104, 1106 and 701) : Walls are finished with glazed ceramic tiles up to the ceiling. Floor is finished with ceramic tiles. Ceiling is finished with emulsion paint. Cooking bench is fitted with stainless steel surface.</p> <p>Flats 106, 203, 206, 505, 507, 508, 604, 607, 801, 803, 806, 1003, 1104 and 1106 : Walls are finished with glazed ceramic tiles up to the ceiling. Floor is finished with homogenous tiles with homogenous tiles skirting. Ceiling is finished with emulsion paint. Cooking bench is fitted with stainless steel surface.</p> <p>Flat 701 : Walls are finished with glazed ceramic tiles up to the ceiling. Floor is finished with homogenous tiles. Ceiling is finished with emulsion paint. Cooking bench is fitted with stainless steel surface.</p>

3.	室內裝置 Interior fittings	
(a)	門 Doors	<p>大門： 單位大門設有鍍鋅鐵閘連漆面實心木門配五金配件及防盜眼。</p> <p>Main Entrance Door: Galvanized metal steel gate is provided at main entrance of each flat together with paint finished solid timber door fitted with ironmongeries and door viewer.</p> <p>浴室門： 空心木門（一面漆面，一面膠板面）配五金配件</p> <p>Bathroom Door: Hollow timber door finished with paint on one side and plastic laminate on the other and fitted with ironmongeries.</p> <p>廚房門： 漆面實心木門配五金配件</p> <p>Kitchen Door: Paint finished solid timber door fitted with ironmongeries.</p>
(b)	浴室 Bathroom	<p>裝置及設備包括搪瓷洗手盤、搪瓷水箱及坐廁連廁板、以過底磚及防滑麻石條為飾面的淋浴間、冷熱水混合龍頭及花灑套裝及非導電浴簾通。供水系統採用銅喉管。</p> <p>Fittings and equipment include vitreous China basin, vitreous China water closet and cistern, shower area finished with homogenous tiles and non-slip granite strips, bath mixer with shower set and proprietary non-conductive curtain rail. Copper pipes are used for water supply system.</p>
(c)	廚房 Kitchen	<p>廚房設有不銹鋼洗滌盆及面為不銹鋼的灶台。供水系統採用銅喉管。</p> <p>Kitchen is fitted with stainless steel sink unit and cooking bench with stainless steel surface. Copper pipes are used for water supply system.</p>
(d)	睡房 Bedroom	<p>不適用</p> <p>Not Applicable</p>
(e)	電話 Telephone	<p>客/飯廳設有一個電話插座。有關插座的位置，請參閱「機電裝置平面圖」。</p> <p>One telephone outlet is provided in the living / dining room. For location of the outlet, please refer to the Mechanical and Electrical Provision Plans.</p>

(f)	天線 Aerials	<p>客/飯廳設有一個電視及電台天線插座接收本地電視及電台節目。有關插座的位置，請參閱「機電裝置平面圖」。</p> <p>One TV & FM outlet for local TV and FM radio programmes is provided in the living / dining room. For location of the outlet, please refer to the Mechanical and Electrical Provision Plans.</p>
(g)	電力裝置 Electrical installations	<p>各單位廚房內均設有用戶總掣連配電箱，其中已預留微型斷路器供冷氣機使用。業主須自行安裝由配電箱至冷氣機位之電線及連接組件。全屋電線導管均為隱藏式安裝。所有電插座均由漏電斷路器保護。有關電插座及接線座的數目及位置，請參閱「住宅物業機電裝置數量說明表」及「機電裝置平面圖」。</p> <p>Consumer unit with main switch are provided in the kitchen of each unit. Miniature Circuit Breaker is reserved in each consumer unit for air conditioners. Owners are required to arrange for installation of wiring and associated accessories for power supply to air conditioners. All cable conduits are concealed. All socket outlets are protected by Residual Current Device. For location and number of socket outlets and spur units, please refer to the Schedule of Mechanical & Electrical Provisions of Residential Properties and the Mechanical and Electrical Provision Plans.</p>
(h)	氣體供應 Gas supply	<p>石油氣供應接駁點設於廚房。有關接駁點的位置，請參閱「機電裝置平面圖」。</p> <p>Liquefied Petroleum Gas supply connection point is provided in the kitchen. For location of the connection point, please refer to the Mechanical and Electrical Provision Plans.</p>
(i)	洗衣機接駁點 Washing machine connection point	<p>洗衣機來去水位設於廚房。有關洗衣機來去水位的位置，請參閱「機電裝置平面圖」。</p> <p>Water inlet and outlet connection points for washing machine are provided in the kitchen. For location of the water inlet and outlet connection points for washing machine, please refer to the Mechanical and Electrical Provision Plans.</p>
(j)	供水 Water supply	<p>冷熱水供水系統採用銅喉管。所有水管均為外露。</p> <p>Copper pipes are used for cold and hot water supply system. All water pipes are exposed.</p>

4.	雜項 Miscellaneous	
(a)	升降機 Lift	一部「三菱」牌客用升降機（型號 VFDL）服務地下至11樓。 One “Mitsubishi” passenger lift (Model No. VFDL) serves G/F to 11/F.
(b)	信箱 Letter box	地下主入口大堂設有每戶專用的不銹鋼信箱。 Stainless steel letter box is provided for each flat at the ground floor lobby.
(c)	垃圾收集 Refuse collection	一樓至十一樓公用地方設有垃圾房及垃圾槽，並於地面公用地方設有主垃圾房及垃圾收集站中央處理垃圾。 Refuse room with refuse chute is provided in the common area of 1/F to 11/F, refuse chamber and refuse collection point are provided in the common area on ground level for centralised processing of refuse.
(d)	水錶、電錶、氣體錶 Water meter, electricity meter and gas meter	各單位的獨立水錶設於單位外公共走廊。各單位的獨立電錶設於各樓層的電錶房內。各單位廚房內均預留位置安裝獨立石油氣錶（買方須自行申請安裝石油氣錶）。 Separate water meter for each flat is provided at the common corridor outside the flat. Separate electricity meter for each flat is provided at the meter room on each floor. Space for separate Liquefied Petroleum Gas meter is provided in the kitchen of each flat (purchasers are required to make individual application for installation of Liquefied Petroleum Gas meter).
5.	保安設施 Security facilities	
		設有數碼閉路電視監察系統監控升降機內，各地下入口及各頂層出口狀況。數碼閉路電視監控設備設於地下保安室內。 Digital Closed Circuit Television (DCCTV) System is provided for monitoring the situation of the lift car, ground floor entrances and exits to roof floor. The monitoring equipment for DCCTV system is provided in the guard room on ground floor.
6.	設備 Appliances	
		各單位浴室設有一部「氣霸」牌石油氣熱水爐（型號 HY-12VGS）。 One “Hibachi” Liquefied Petroleum Gas water heater (Model No. HY-12VGS) is provided in the bathroom of each flat.

賣方承諾如發展項目中沒有安裝指明的品牌名稱或產品型號的升降機或設備，便會安裝品質相若的升降機或設備。

The Vendor undertakes that if lifts or appliances of the specified brand name or model number are not installed in the Development, lifts or appliances of comparable quality will be installed.

住宅物業機電裝置數量說明表
Schedule of Mechanical & Electrical Provisions of Residential Properties

			地下至十一樓 G/F to 11/F							
樓層 Floor			1	2	3	4	5	6	7	8
單位 Flat										
客/飯廳 Living/ Dining Room	燈掣	Lighting Switch	3	3	3	3	3	3	3	3
	天花燈咀	Ceiling Lamp Holder	3	3	3	3	3	3	3	3
	13安培雙位電插座	13A Twin Socket Outlet	4	4	4	4	4	4	4	4
	電話插座	Telephone Outlet	1	1	1	1	1	1	1	1
	電視及電台天線插座	TV & FM Outlet	1	1	1	1	1	1	1	1
	2安培熔絲接線座	2A Fused Spur Unit	1	1	1	1	1	1	1	1
浴室 Bathroom	燈掣	Lighting Switch	1	1	1	1	1	1	1	1
	抽氣扇開關掣	Switch for Exhaust Fan	1	1	1	1	1	1	1	1
	天花燈咀	Ceiling Lamp Holder	1	1	1	1	1	1	1	1
	2安培熔絲接線座	2A Fused Spur Unit (見註1 See Note 1)	1	1	1	1	1	1	1	1
	5安培熔絲接線座	5A Fused Spur Unit	1	1	1	1	1	1	1	1
廚房 Kitchen	燈掣	Lighting Switch	1	1	1	1	1	1	1	1
	抽氣扇開關掣	Switch for Exhaust Fan	1	1	1	1	1	1	1	1
	天花燈咀	Ceiling Lamp Holder	1	1	1	1	1	1	1	1
	13安培雙位電插座	13A Twin Socket Outlet	2	2	2	2	2	2	2	2
	2安培熔絲接線座	2A Fused Spur Unit (見註1 See Note 1)	1	1	1	1	1	1	1	1
	13安培有掣熔絲接線座	13A Switched Fused Spur Unit	1	1	1	1	1	1	1	1
	用戶總掣連配電箱	Consumer Unit	1	1	1	1	1	1	1	1
	石油氣供應接駁點	Liquefied Petroleum Gas Supply Connection Point	1	1	1	1	1	1	1	1
	洗衣機來水位	Water Inlet Connection Point for Washing Machine	1	1	1	1	1	1	1	1
	洗衣機去水位	Water Outlet Connection Point for Washing Machine	1	1	1	1	1	1	1	1

註：

1. 安裝於廁所及廚房內之2安培熔絲接線座是供抽氣扇接駁之用。抽氣扇開關掣分別設於廁所及廚房門外。
2. 地下、10樓及11樓不設1號單位。
3. 地下不設2號及3號單位。
4. 10樓及11樓不設7號單位。
5. 8樓、9樓、10樓及11樓不設8號單位。















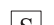

Notes:

1. The 2A Fused Spur Unit installed inside the bathroom and the kitchen is used for exhaust fan only. The switch for exhaust fan is located outside the bathroom and the kitchen respectively.
2. Flat 1 does not exist on G/F, 10/F and 11/F.
3. Flats 2 & 3 do not exist on G/F.
4. Flat 7 does not exist on 10/F and 11/F.
5. Flat 8 does not exist on 8/F, 9/F, 10/F and 11/F.

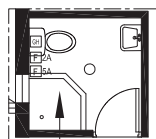
機電裝置平面圖

Mechanical & Electrical Provision Plans

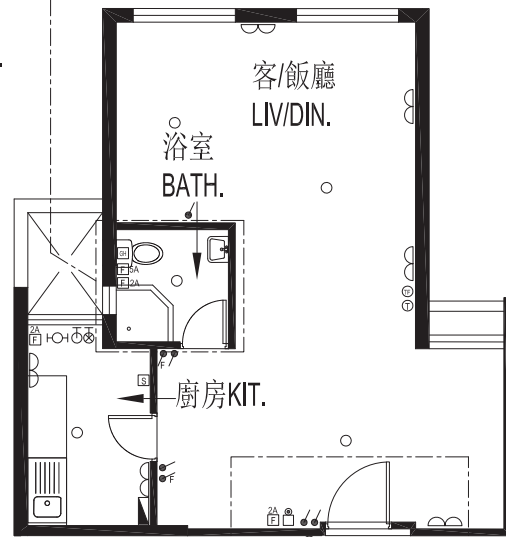
圖例 Notation

-  13安培雙位電插座
13A Twin Socket Outlet
-  燈掣
Lighting Switch
-  F/
抽氣扇開關掣
Switch for Exhaust Fan
-  ○
天花燈咀
Ceiling Lamp Holder
-  (T)
電話插座
Telephone Outlet
-  (TF)
電視及電台天線插座
TV & FM Outlet
-  ●
門鈴按鈕
Door Bell Push Button
-  □
門鈴
Door Bell
-  [F 5A / 5A F]
5安培熔絲接線座
5A Fused Spur Unit
-  [F 2A / F / 2A F]
2安培熔絲接線座
2A Fused Spur Unit
-  [S]
13安培有掣熔絲接線座
13A Switched Fused Spur Unit
-  ▬
用戶總掣連配電箱
Consumer Unit
-  [GH]
石油氣熱水爐
Liquefied Petroleum Gas Water Heater
-  ⊕
石油氣供應接駁點
Liquefied Petroleum Gas Supply Connection Point
-  ⊕
洗衣機來水位
Water Inlet Connection Point for Washing Machine
-  ⊖
洗衣機去水位
Water Outlet Connection Point for Washing Machine
- BATH. 浴室 Bathroom
- KIT. 廚房 Kitchen
- LIV/DIN. 客/飯廳 Living/Dining Room

適用於下列單位的浴室：
FOR THE BATHROOM OF THE FOLLOWING FLATS:
101, 301, 501, 601, 801

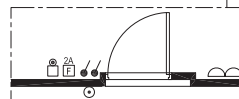


浴室
BATH.

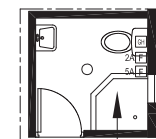


1號單位
FLAT 1

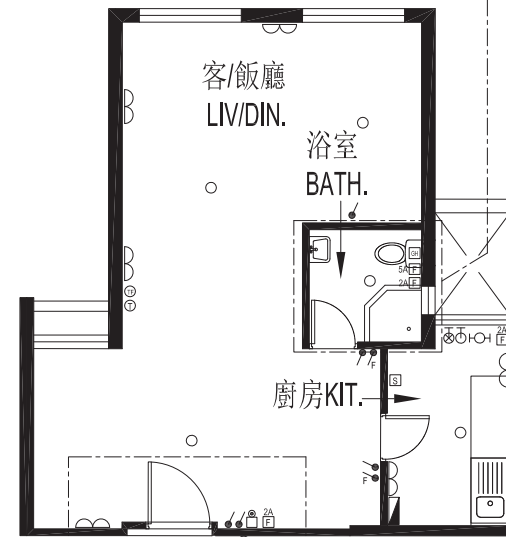
適用於下列單位的客/飯廳：
FOR THE LIVING/DINING ROOM OF
THE FOLLOWING FLAT:
101



適用於下列單位的浴室：
FOR THE BATHROOM OF THE FOLLOWING FLAT:
408

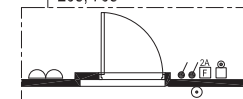


浴室
BATH.



8號單位 (地下除外)
FLAT 8 (EXCEPT G/F)

















適用於下列單位的客/飯廳：
FOR THE LIVING/DINING ROOM OF
THE FOLLOWING FLATS:
208, 708



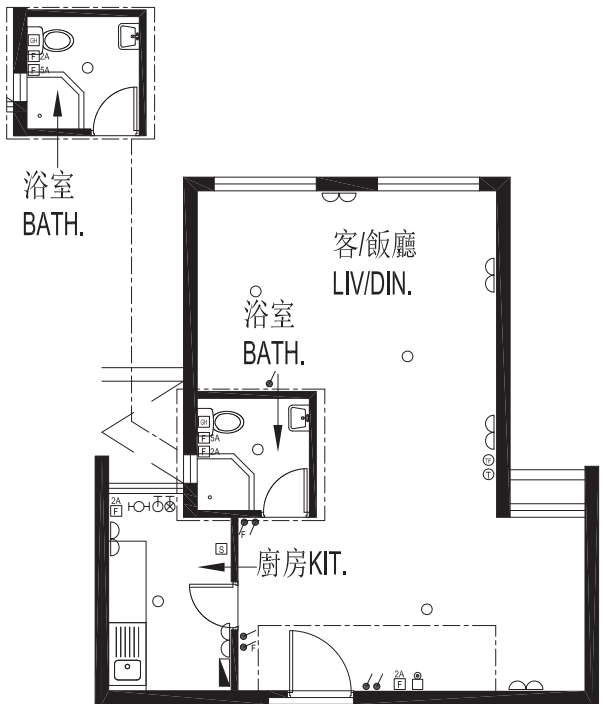
機電裝置平面圖

Mechanical & Electrical Provision Plans

圖例 Notation

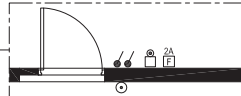
-  13安培雙位電插座
13A Twin Socket Outlet
-  燈掣
Lighting Switch
-  抽氣扇開關掣
Switch for Exhaust Fan
-  天花燈咀
Ceiling Lamp Holder
-  電話插座
Telephone Outlet
-  電視及電台天線插座
TV & FM Outlet
-  門鈴按鈕
Door Bell Push Button
-  門鈴
Door Bell
-  5安培熔絲接線座
5A Fused Spur Unit
-  2安培熔絲接線座
2A Fused Spur Unit
-  13安培有掣熔絲接線座
13A Switched Fused Spur Unit
-  用戶總掣連配電箱
Consumer Unit
-  石油氣熱水爐
Liquefied Petroleum Gas Water Heater
-  石油氣供應接駁點
Liquefied Petroleum Gas Supply Connection Point
-  洗衣機來水位
Water Inlet Connection Point for Washing Machine
-  洗衣機去水位
Water Outlet Connection Point for Washing Machine
- BATH.** 浴室 Bathroom
- KIT.** 廚房 Kitchen
- LIV/DIN.** 客/飯廳 Living/Dining Room

適用於下列單位的浴室：
FOR THE BATHROOM OF THE FOLLOWING FLATS:
103, 203, 303, 503, 603, 803, G07, 307, 607, 807, 907

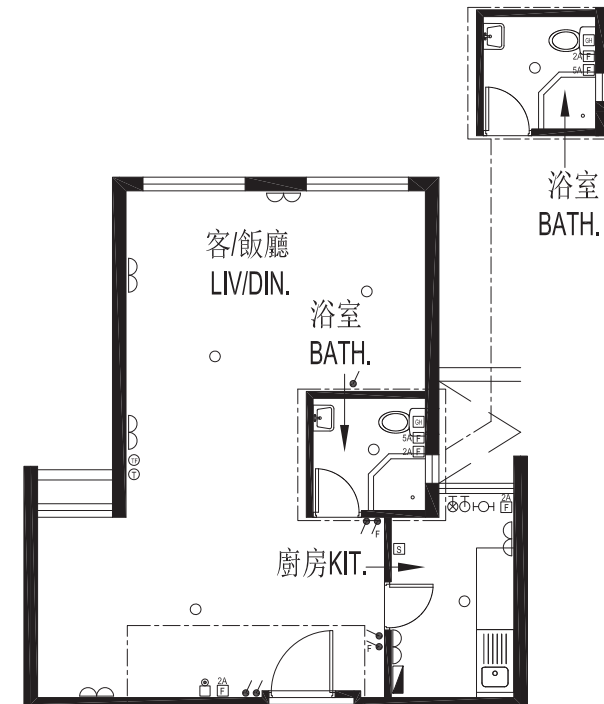


3及7號單位
FLATS 3 & 7

適用於下列單位的客/飯廳：
FOR THE LIVING/DINING ROOM OF
THE FOLLOWING FLATS:
403, 503, 207, 307

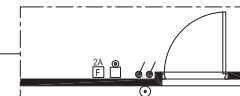


適用於下列單位的浴室：
FOR THE BATHROOM OF THE FOLLOWING FLATS:
102, 302, 502, 602, 902, 406, 606, 806, 1106



2、6號單位及地下8號單位
FLATS 2, 6 & FLAT G08

















適用於下列單位的客/飯廳：
FOR THE LIVING/DINING ROOM OF
THE FOLLOWING FLAT:
102



機電裝置平面圖

Mechanical & Electrical Provision Plans

圖例 Notation

-  13安培雙位電插座
13A Twin Socket Outlet
-  燈掣
Lighting Switch
-  抽氣扇開關掣
Switch for Exhaust Fan
-  天花燈咀
Ceiling Lamp Holder
-  電話插座
Telephone Outlet
-  電視及電台天線插座
TV & FM Outlet
-  門鈴按鈕
Door Bell Push Button
-  門鈴
Door Bell
-  5安培熔絲接線座
5A Fused Spur Unit
-  2安培熔絲接線座
2A Fused Spur Unit
-  13安培有掣熔絲接線座
13A Switched Fused Spur Unit
-  用戶總掣連配電箱
Consumer Unit
-  石油氣熱水爐
Liquefied Petroleum Gas Water Heater
-  石油氣供應接駁點
Liquefied Petroleum Gas Supply Connection Point
-  洗衣機來水位
Water Inlet Connection Point for Washing Machine
-  洗衣機去水位
Water Outlet Connection Point for Washing Machine
- BATH.** 浴室 Bathroom
- KIT.** 廚房 Kitchen
- LIV/DIN.** 客/飯廳 Living/Dining Room

適用於下列單位的浴室：
FOR THE BATHROOM OF THE FOLLOWING FLATS:
G04, 104, 304, 604, 1104

適用於下列單位的浴室：
FOR THE BATHROOM OF THE FOLLOWING FLATS:
105, 305, 405, 605, 705, 805, 905

