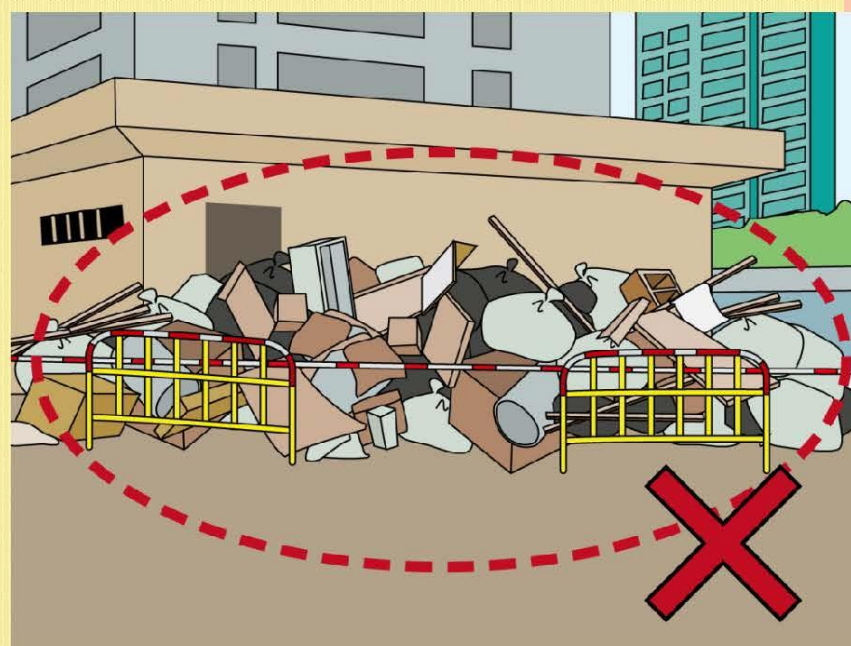


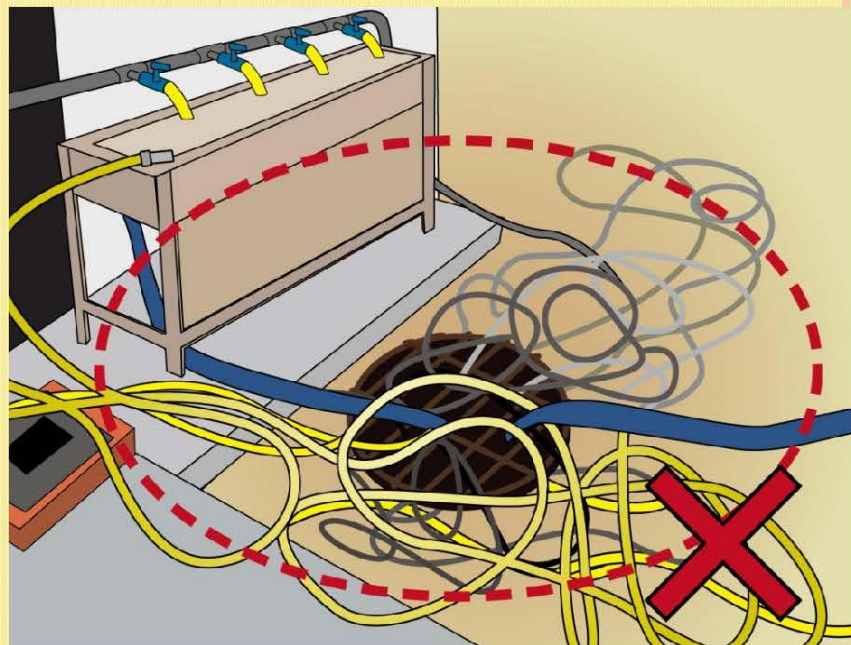
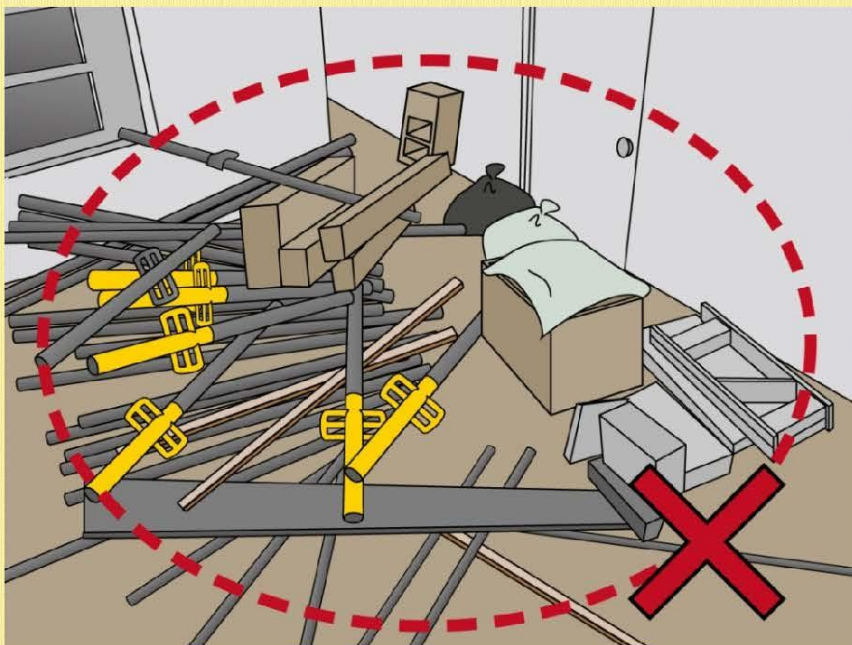
BAD HOUSEKEEPING
不良好工地管理

BAD PRACTICE 不良作業方式



Ample Accumulation of Construction Waste on Site
大量垃圾積聚

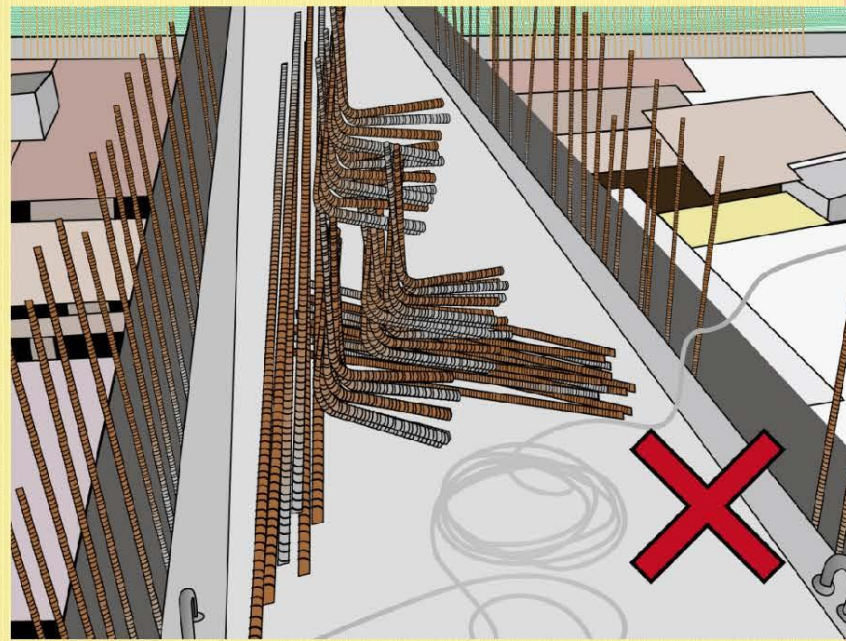
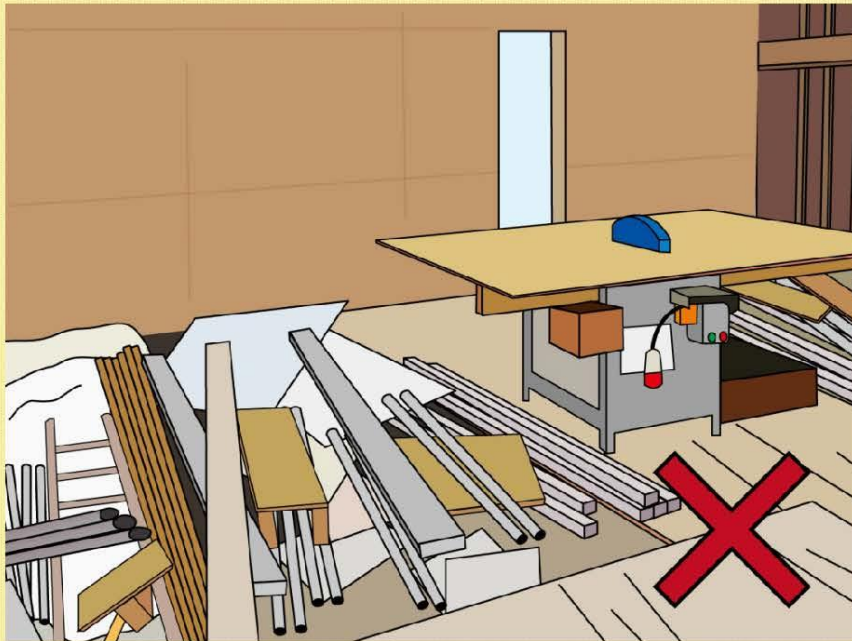
BAD PRACTICE 不良作業方式



Workplace & Washing Area were not Maintained in Good Condition

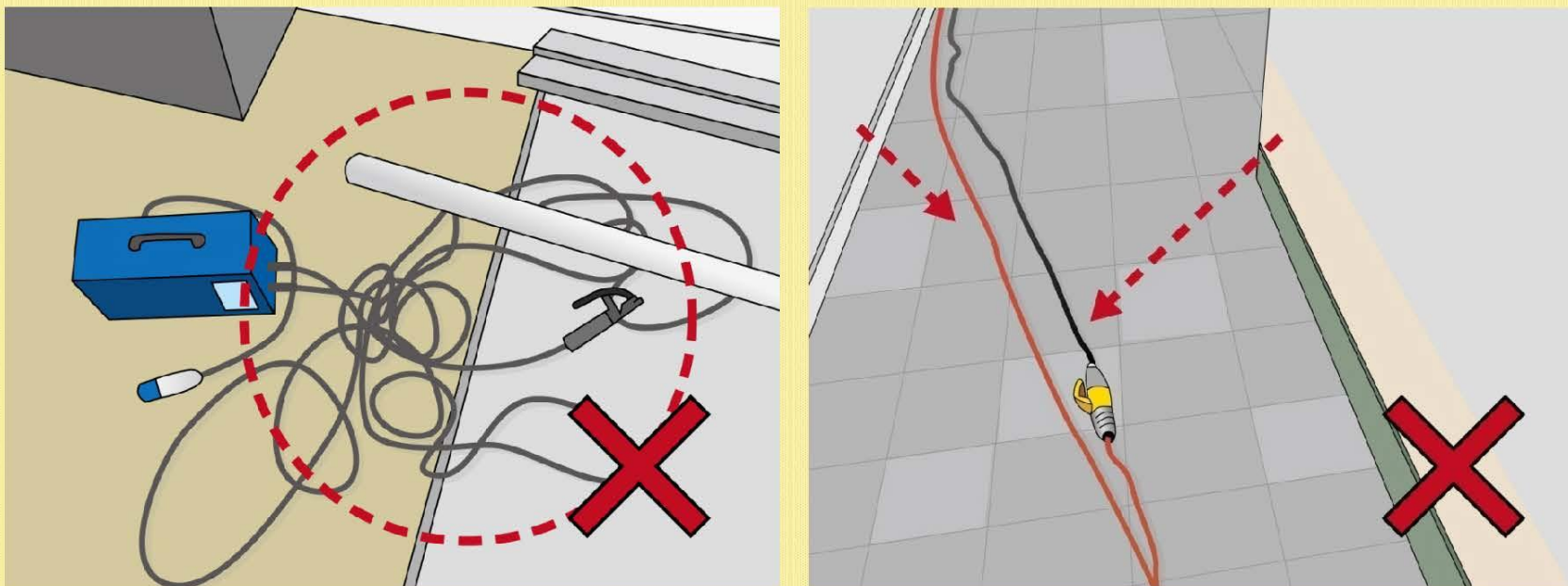
工地及清洗設施欠妥善整理

BAD PRACTICE 不良作業方式



Access not Maintained in Good Condition
工地通道欠妥善整理

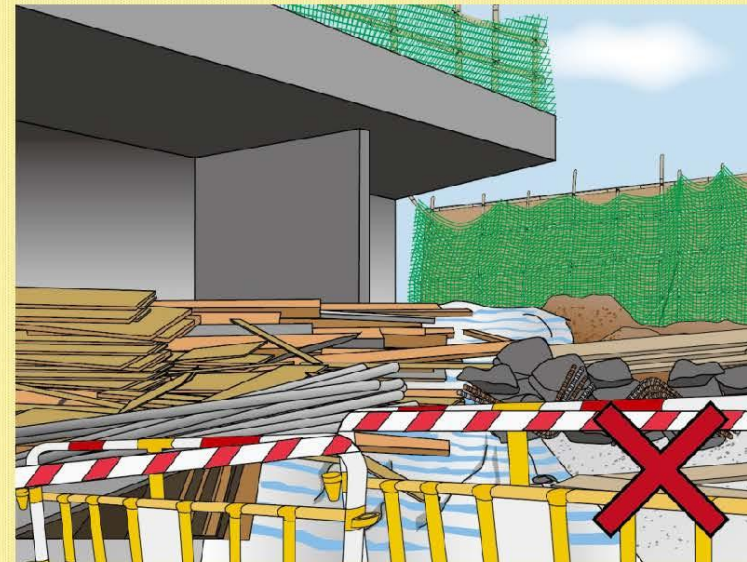
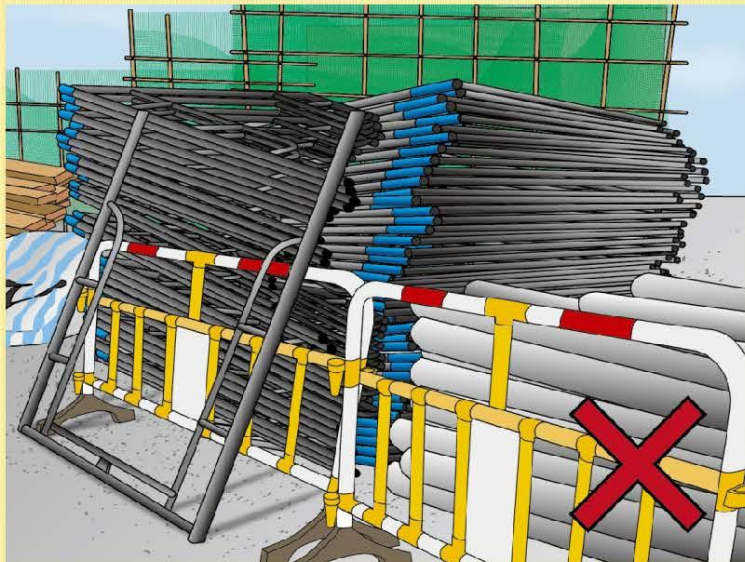
BAD PRACTICE 不良作業方式



Cables were laid on the ground
電線鋪在地面上

BAD PRACTICE 不良作業方式

- Improper material storage
- 不當存放物料



BAD PRACTICE 不良作業方式

- Poor housekeeping
- 不良工地整理



BAD PRACTICE 不良作業方式

- No chemical label displayed
- 欠缺化學品安全標籤



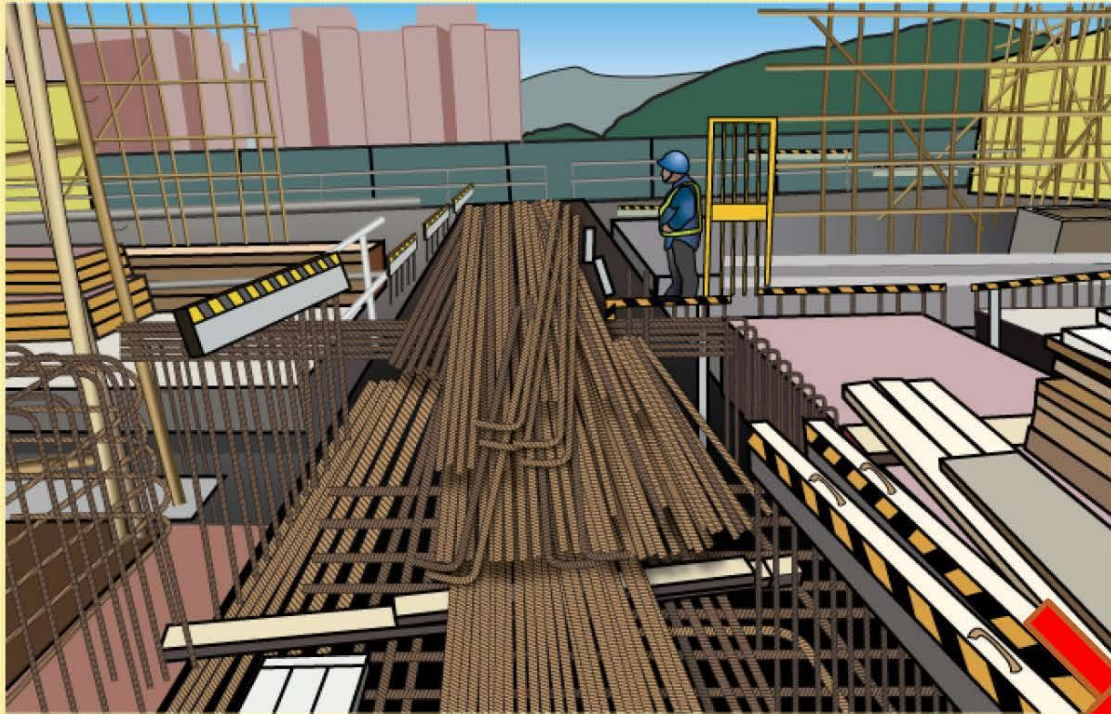
BAD PRACTICE 不良作業方式

- Construction waste accumulated
- 積存建築廢料



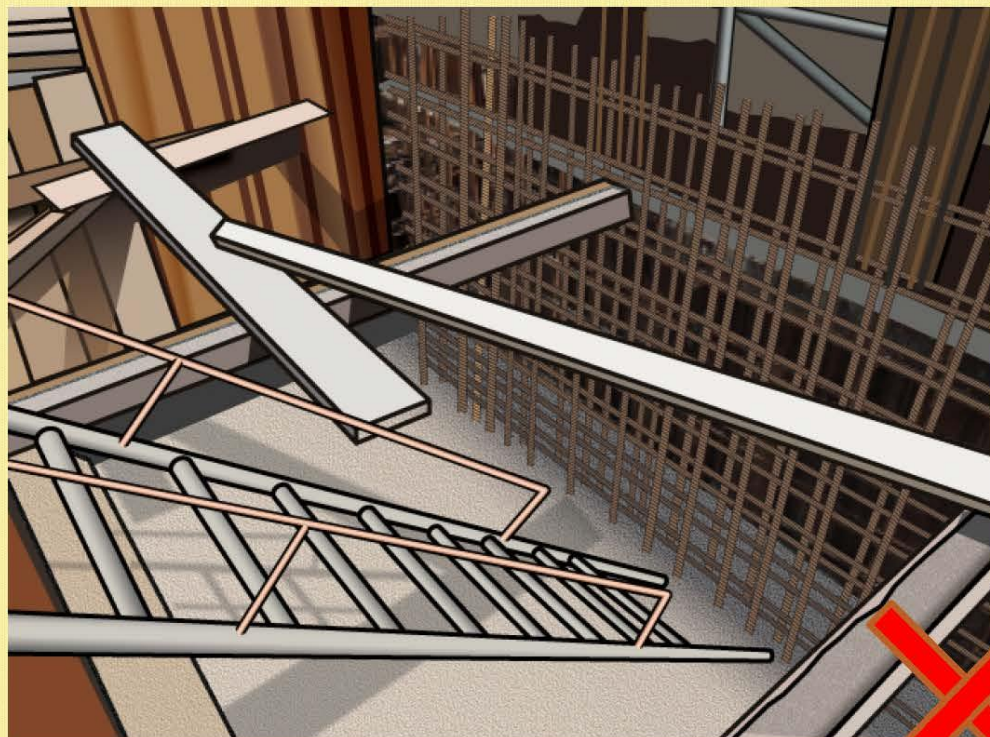
BAD PRACTICE 不良作業方式

- Passageway was blocked
- 阻塞通道



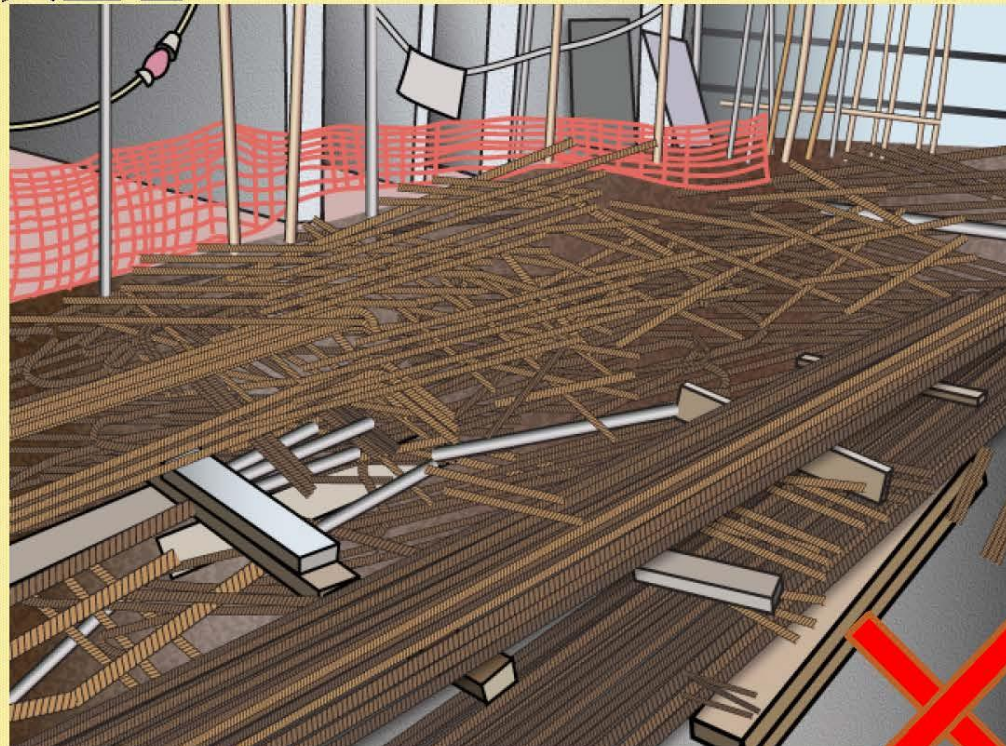
BAD PRACTICE不良作業方式

- Loose materials were found the top of excavation
- 鬆散的物料存放在挖坑的頂部



BAD PRACTICE 不良作業方式

- Good housekeeping was not maintained
- 工作場所欠整理



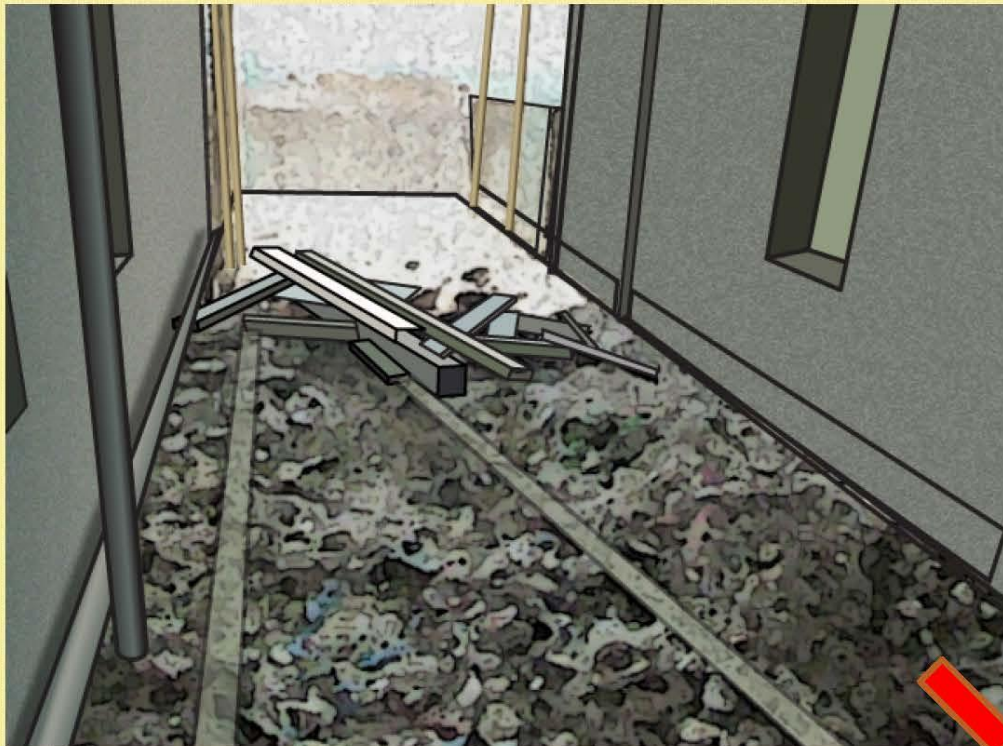
BAD PRACTICE 不良作業方式

- Protruding sharp bars observed on site
- 鐵枝突出物未有保護



BAD PRACTICE 不良作業方式

- Poor housekeeping 不良工場整理



BAD PRACTICE 不良作業方式

- Housekeeping was not properly maintained
- 工作場所沒有妥善整理

