



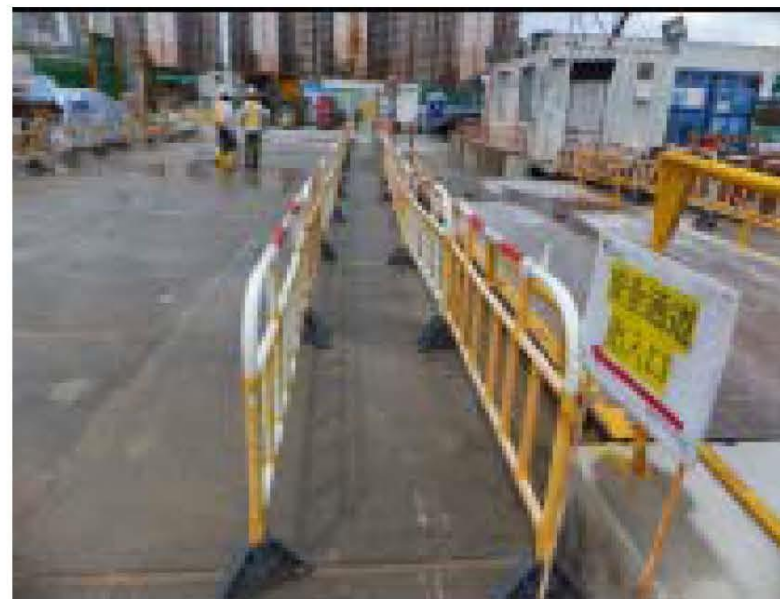
# GOOD HOUSEKEEPING 良好工地管理

1

# GOOD PRACTICE 良好作業方式

## PROPER ACCESS LADDER AND PATHWAY TO WORKPLATFORM

安全進出口



2



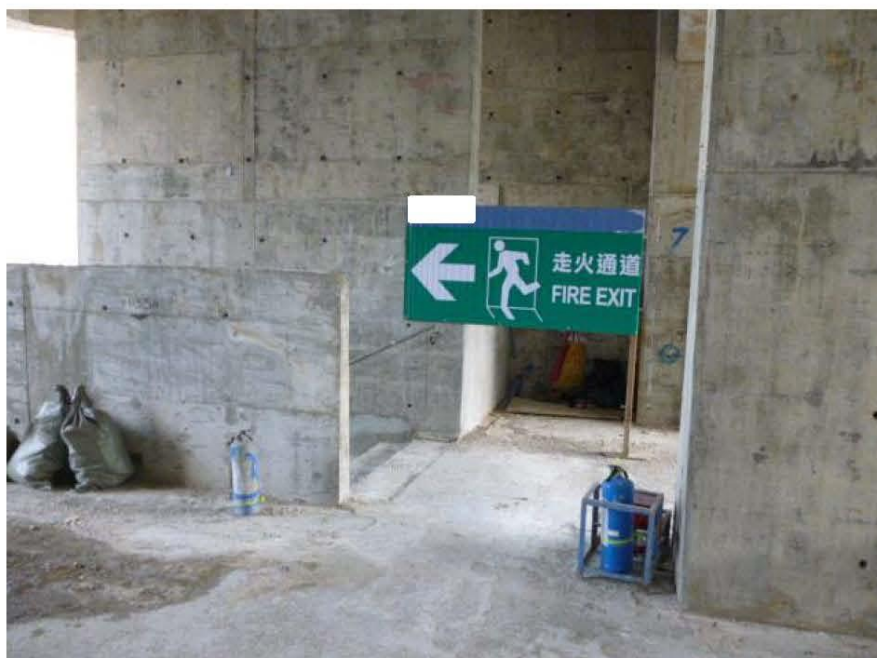
## GOOD PRACTICE 良好作業方式

- Floor edge properly protected.
- 樓邊妥善保護。



## GOOD PRACTICE 良好作業方式

- Safe means of escape
- 提供安全的逃生路線



# GOOD PRACTICE 良好作業方式

## Good Housekeeping

良好工地整理





## GOOD PRACTICE 良好作業方式

- Protruding re-bars protected
- 對突出的鐵支作保護



## GOOD PRACTICE 良好作業方式

- Protruding starter bars were protected
- 突出的鋼筋加以防護





## GOOD PRACTICE 良好作業方式

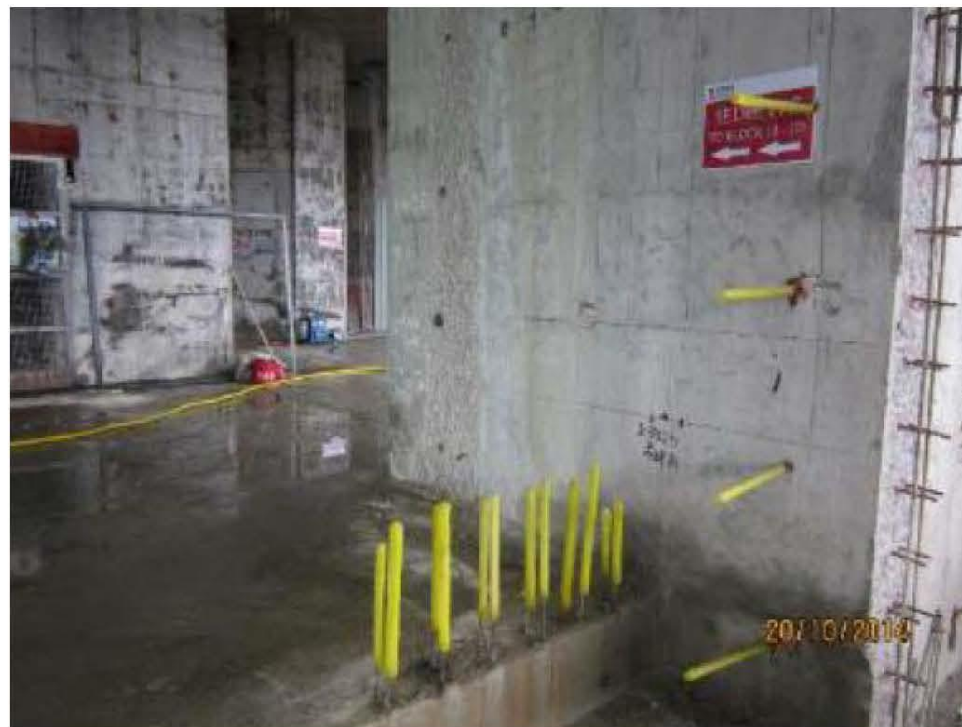
- Protruding steel bar was properly protected
- 突出的鋼筋已妥善保護好





## GOOD PRACTICE 良好作業方式

- Protruded bars were protected
- 突出的鋼筋已作出保護



## GOOD PRACTICE 良好作業方式

- Lending of proper lifting gear
- 提供適當的起重工具以供借用



## GOOD PRACTICE 良好作業方式

- Display of 5S examples
- 展示**5S**良好例子及標準



## GOOD PRACTICE 良好作業方式

- Safe access was provided for working on formwork
- 為模板工作提供安全進出通道





## GOOD PRACTICE 良好作業方式

- Designated safe means of access
- 指定安全出入通道

