



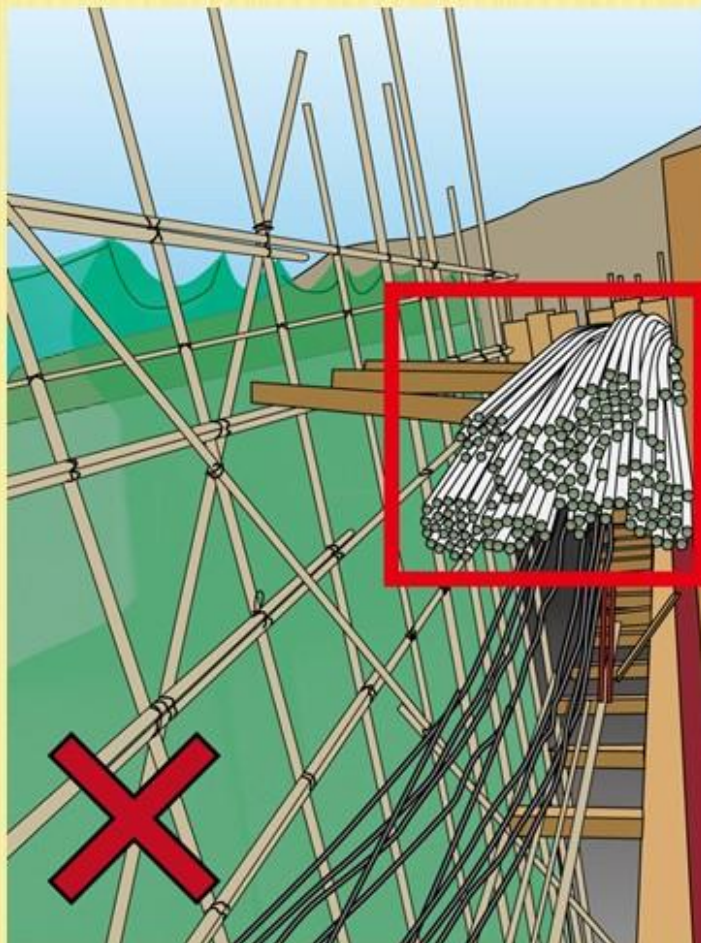
**PREVENTION OF FALLING  
OBJECTS**

防止高空墜物

23

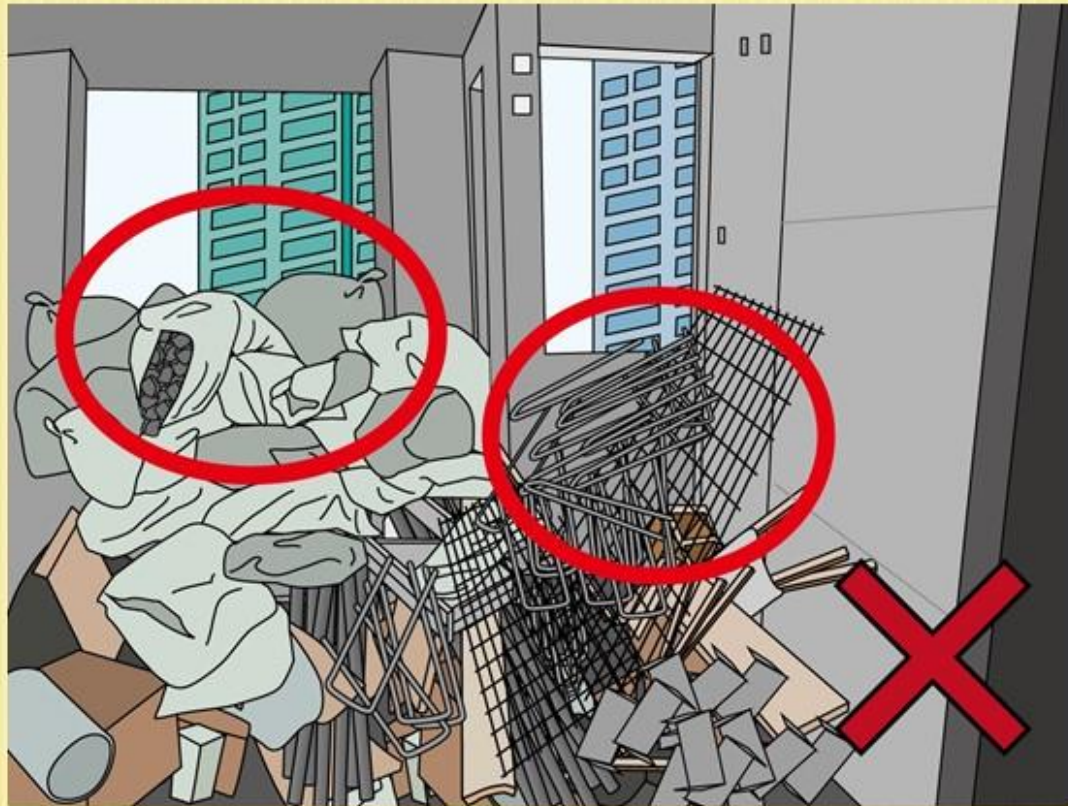
物料推疊於竹棚架上

MATERIALS STACKED ON BAMBOO SCAFFOLD



建築廢料推疊過高並超出窗口高度

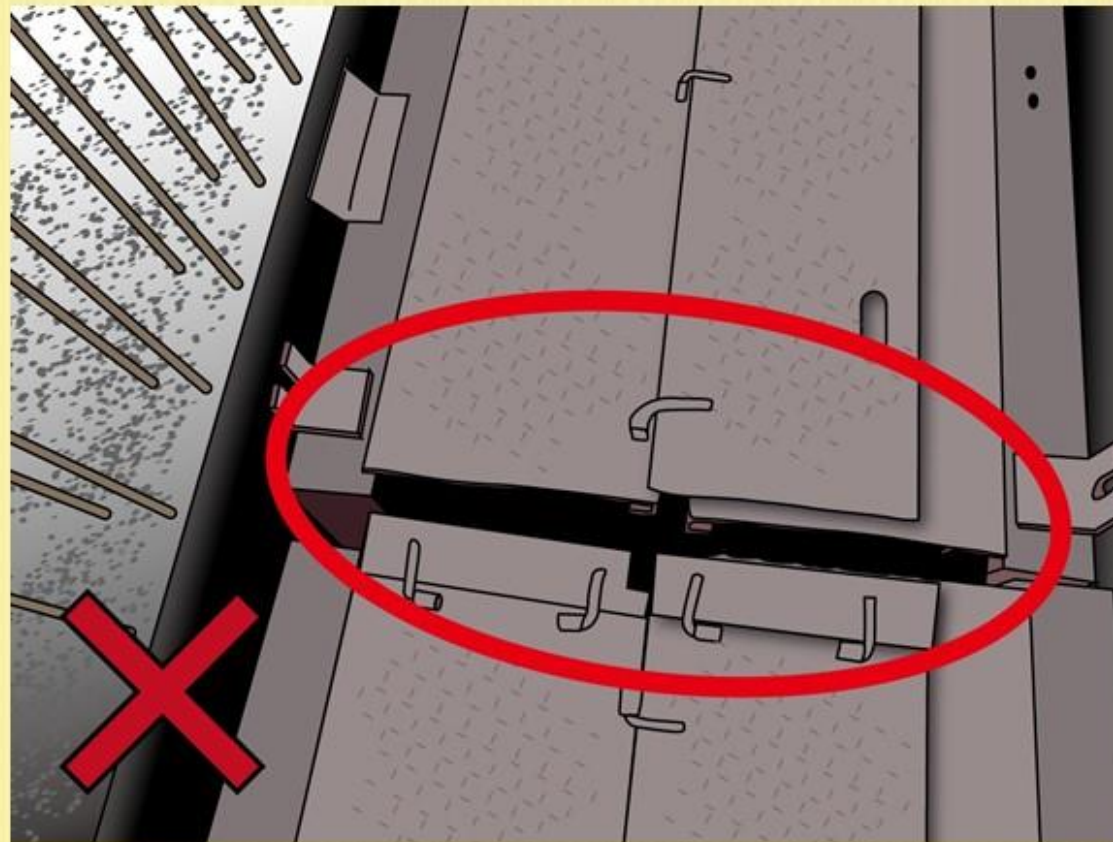
THE STACKING LEVEL OF CONSTRUCTION WASTE  
WAS ABOVE THE LEVEL OF WINDOW OPENINGS



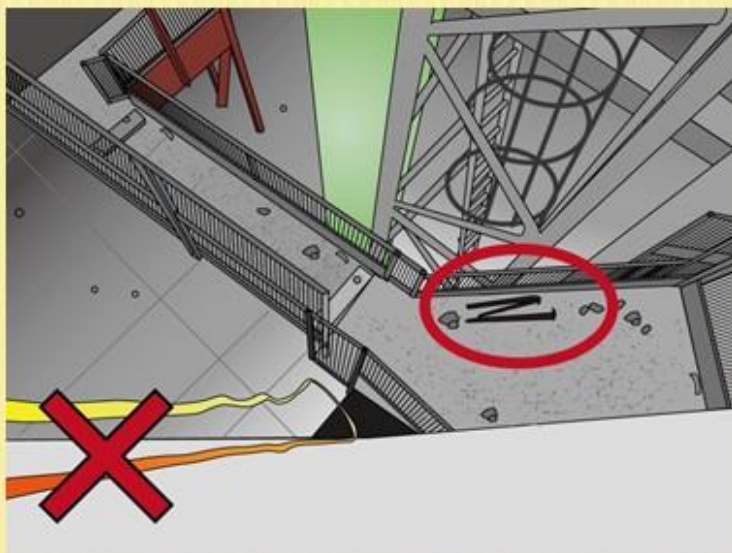


鐵模邊出現罅隙（鐵模下是行人通道）

GAP EXISTS BESIDE AND BETWEEN METAL FORMWORK  
(THERE IS A WALKWAY BELOW THE METAL FORMWORK)



應將外牆鐵模平台上的雜物碎料清走  
DEBRIS AND LOOSE MATERIALS SHOULD BE  
CLEARED FROM THE EXTERNAL WALL METAL  
PLATFORM





樓高七層以上的建築沒有安裝保護簷篷

PROTECTIVE CANOPY WAS NOT INSTALLED FOR A  
STRUCTURE OF 7 OR MORE FLOORS.



出料台上物料堆疊過高

MATERIALS STACKED TOO HIGH ON LOADING  
PLATFORM

