



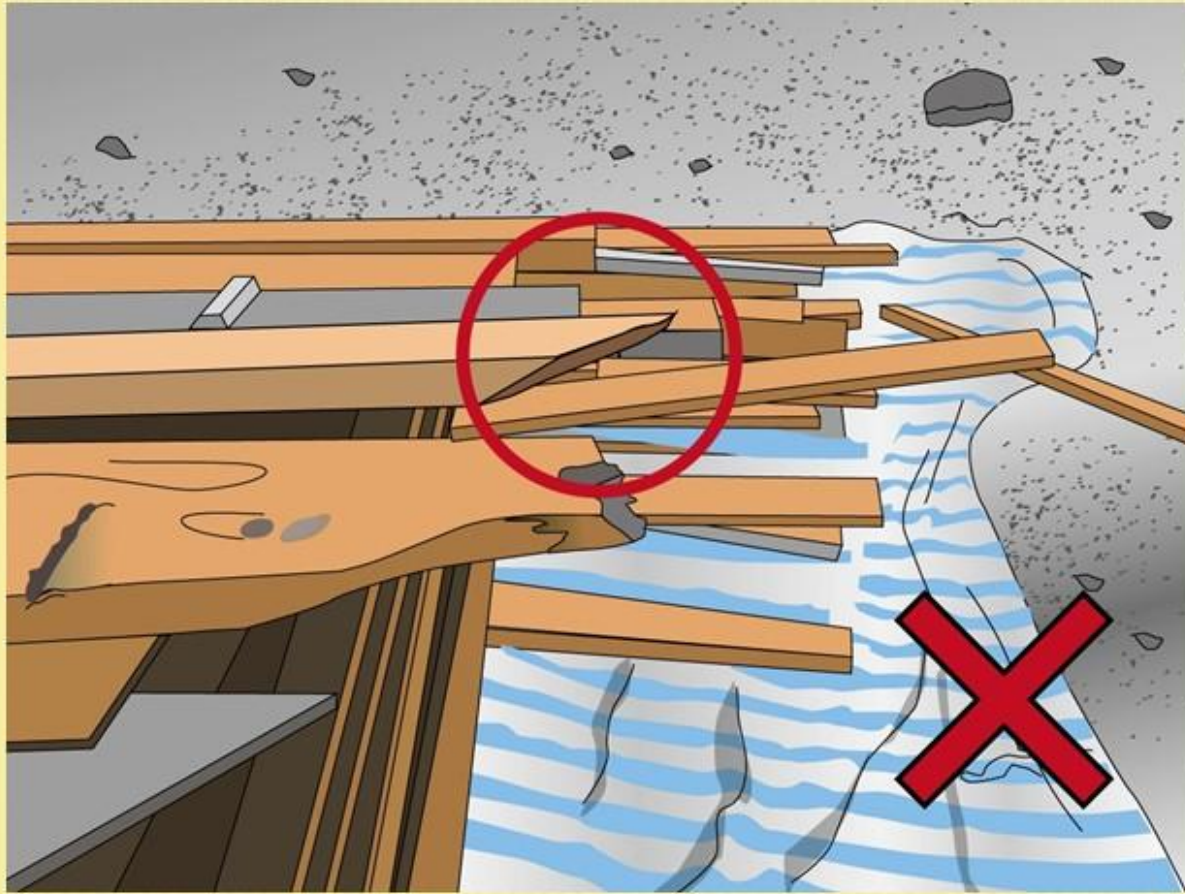
# **HOUSEKEEPING**

## 工作場所整理

30

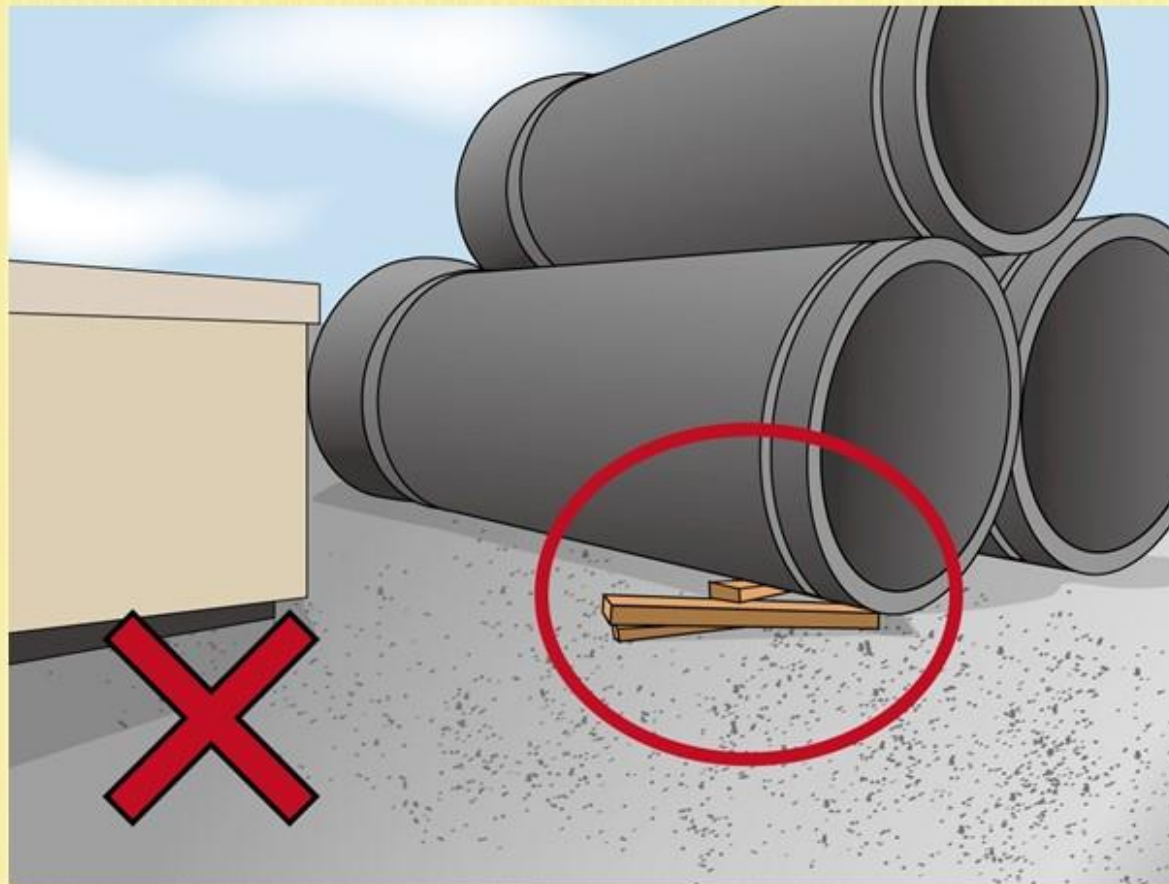
# PROJECTING SHARP OBJECT

## 突出的尖銳物



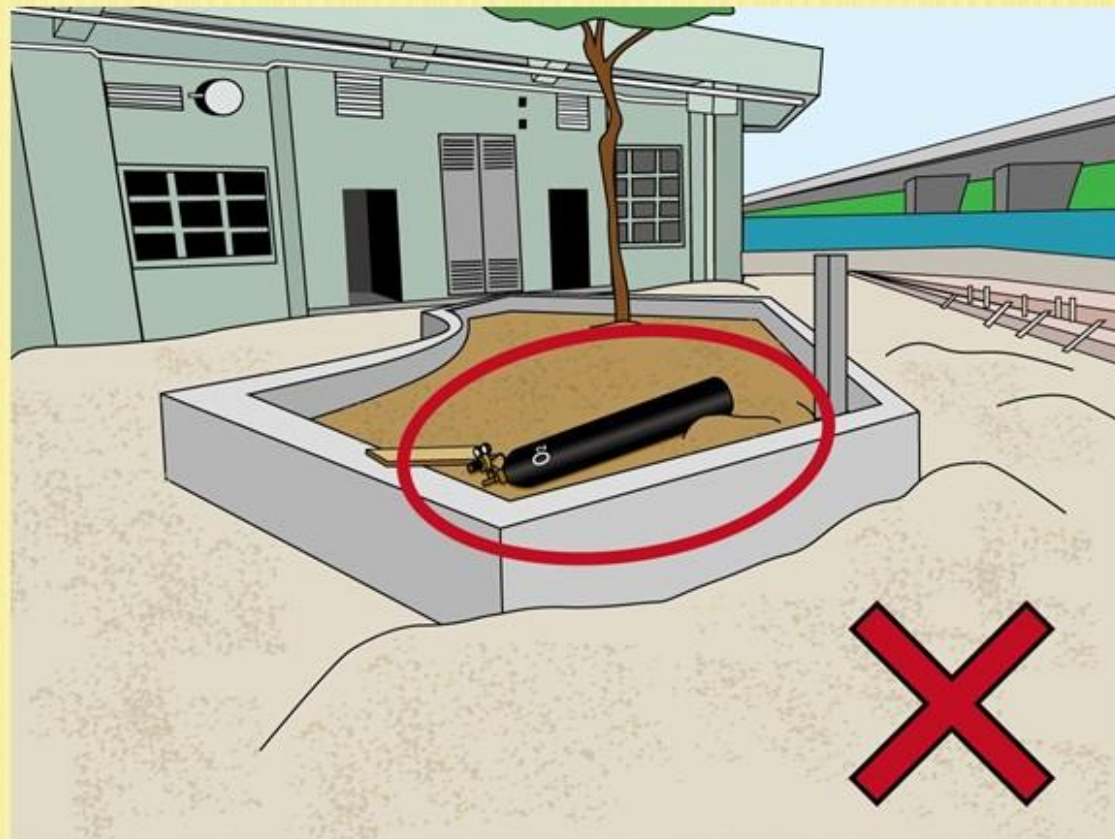
# CONCRETE PIPES WITHOUT SECURE STOPPER

大型石矢渠筒沒有被妥善楔好



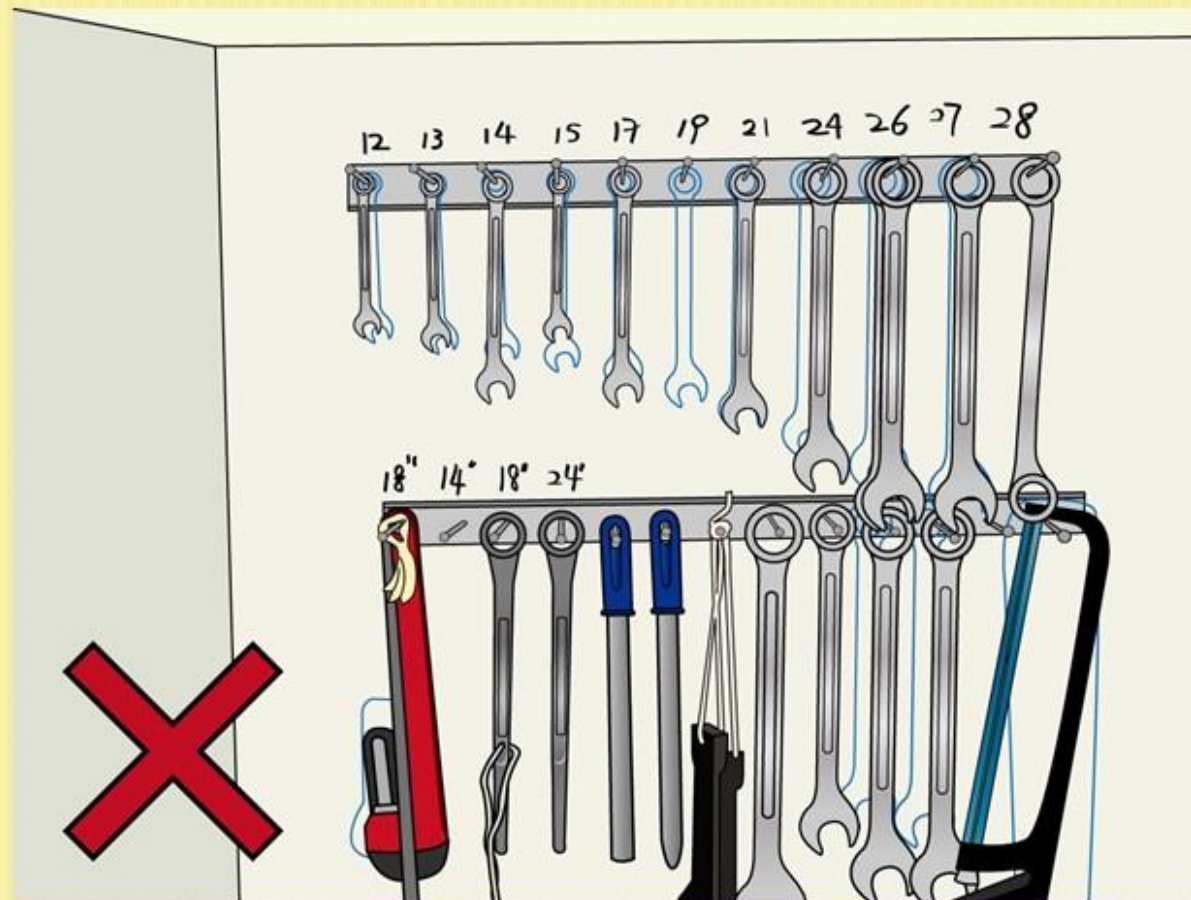


Empty gas container found inside planter  
用完的氧氣瓶沒有被妥善儲存



# HOUSEKEEPING SYSTEM NOT BEING FOLLOWED

沒有依從良好工作場所安排



鐵模沒有足夠支撐

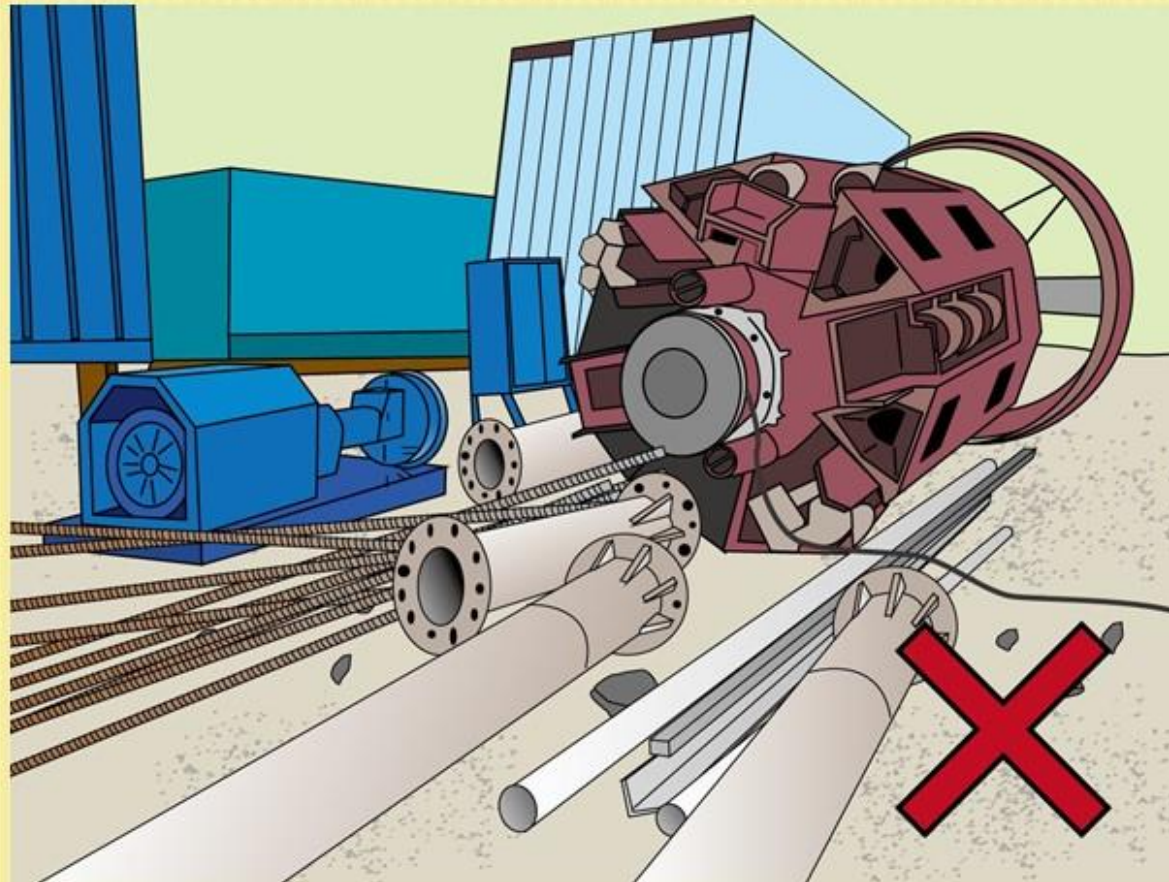
**METAL FORMWORK WITHOUT SUFFICIENT  
SUPPORT**





物料隨地亂放

**MATERIALS STORED IMPROPERLY**



突出的尖銳物

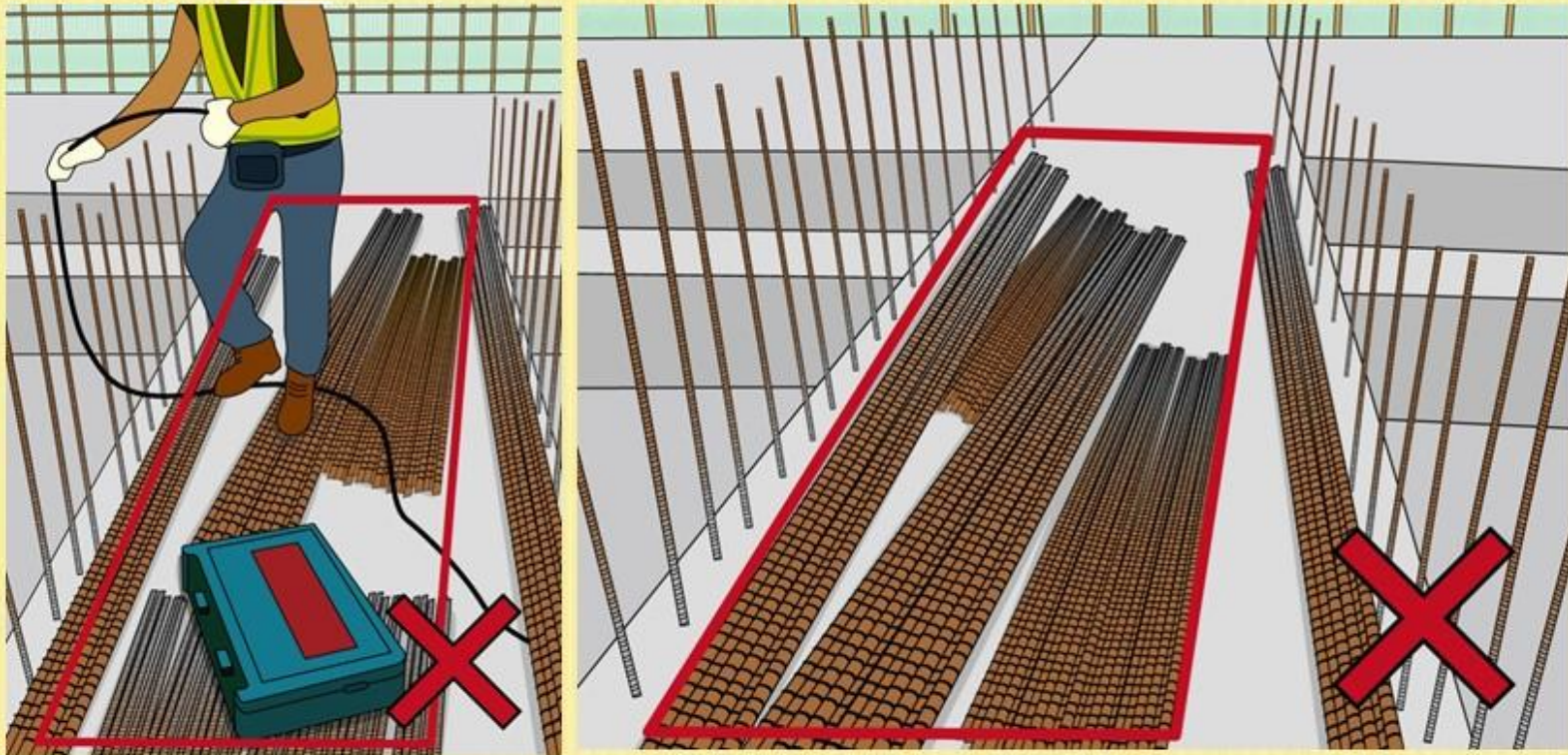
PROJECTING SHARP OBJECT





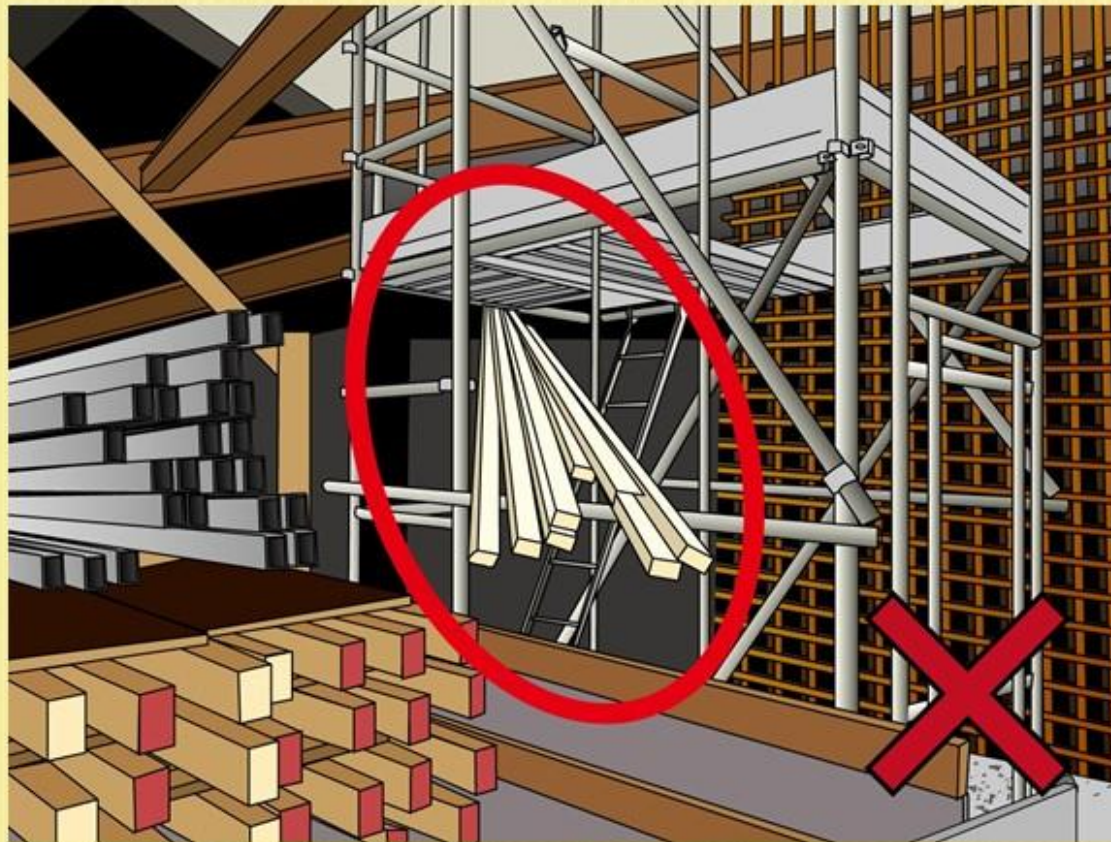
鋼筋放置於主要道路或導致絆倒

METAL BARS PLACED ON THE MAIN ACCESS  
CAUSING TRIPPING HAZARD



木條不穩固地斜放於通架上

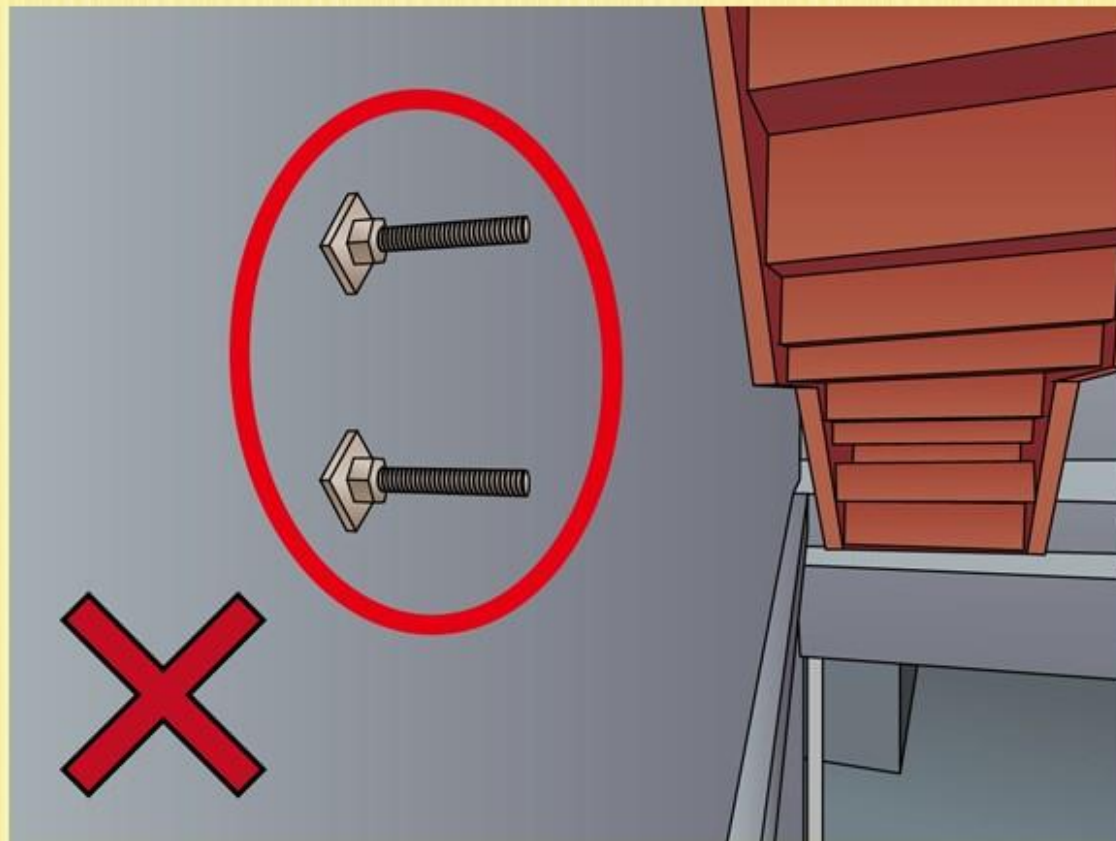
WOOD BATTENS STORED INSECURELY AT  
MOBILE SCAFFOLD





過山纜絲凸出於進出路徑

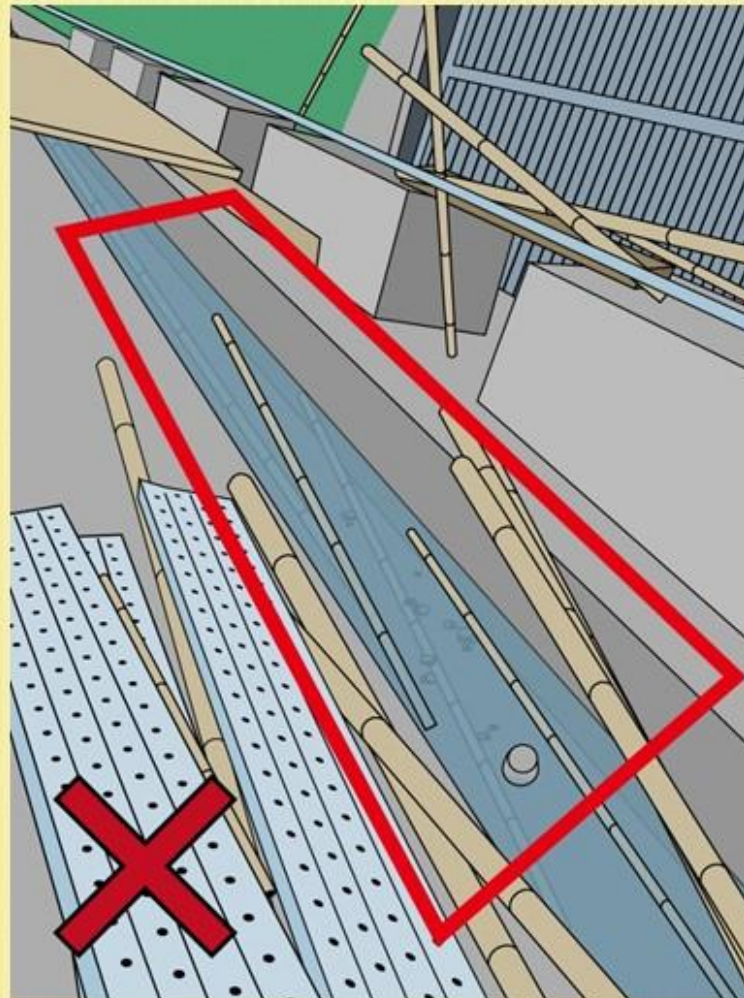
PROJECTING BOLTS WERE FOUND ON ACCESS ROUTE





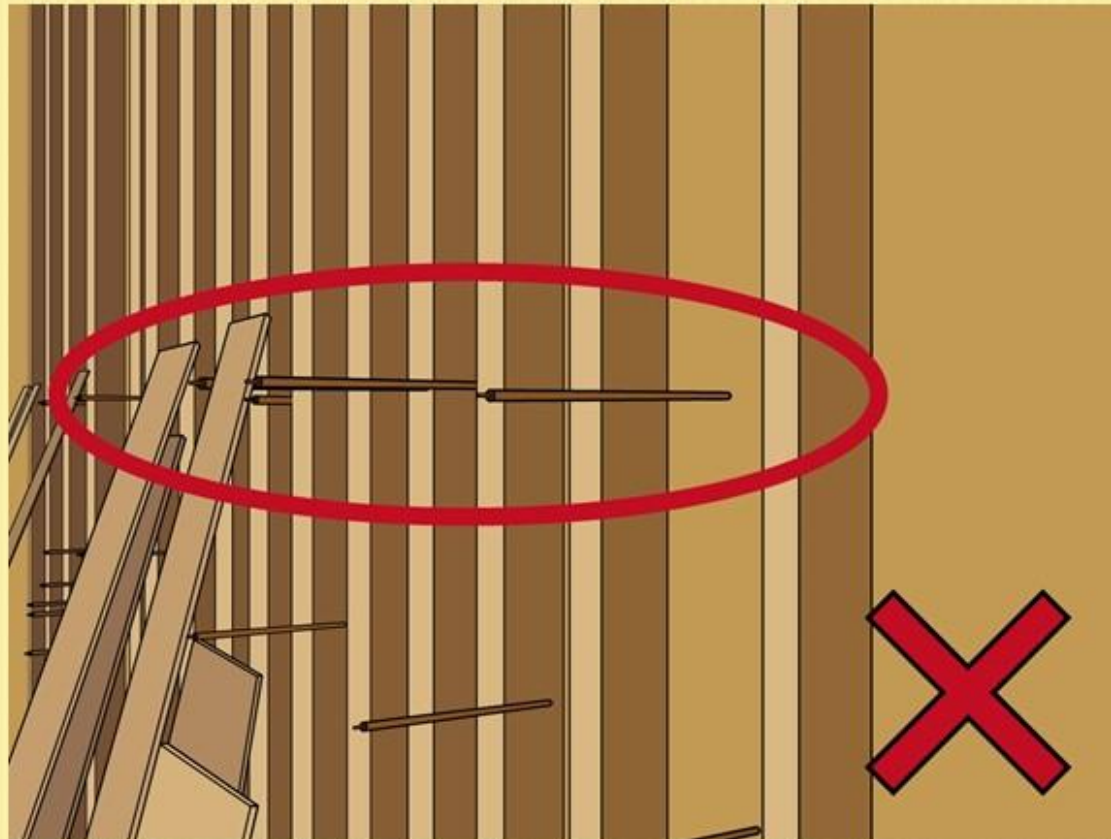
應清除積水以杜絕蚊患

STAGNANT WATER SHOULD BE REMOVED TO  
ELIMINATE MOSQUITO BREEDING



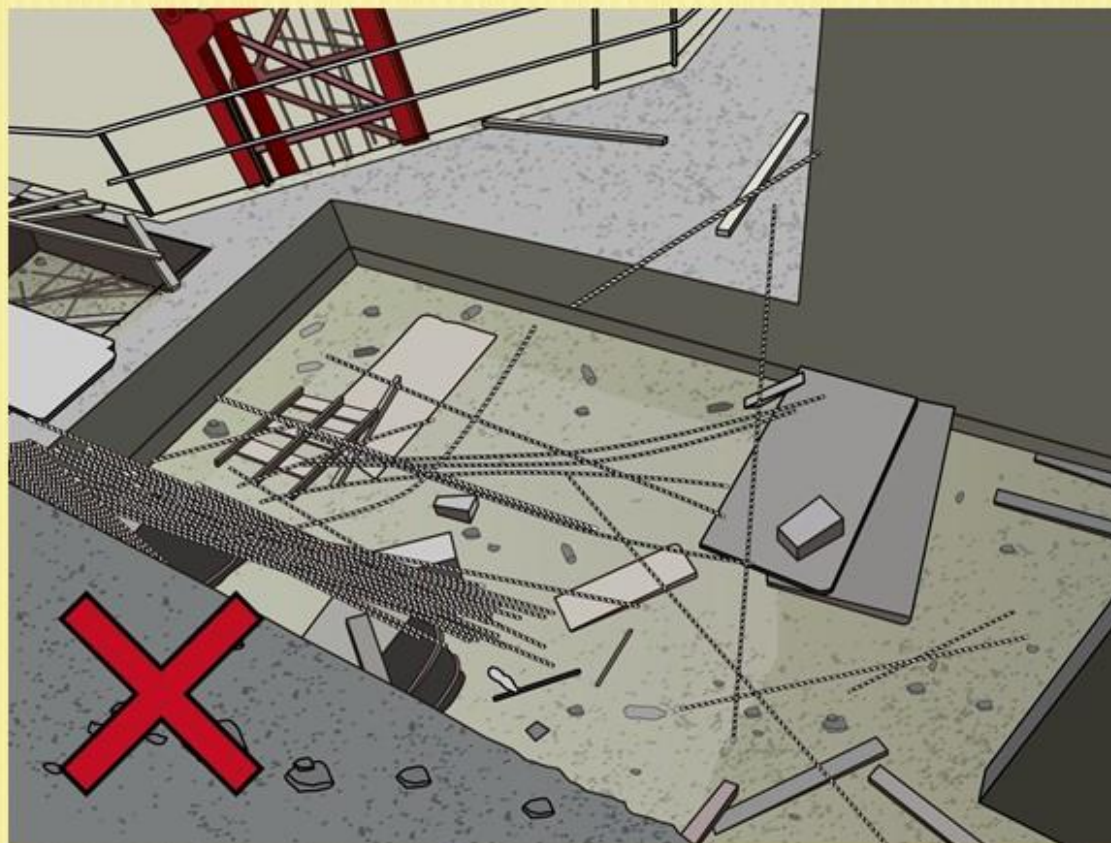
螺栓沒有作出保護

PROTRUDED BOLTS WERE NOT COVERED



簷篷上有積水

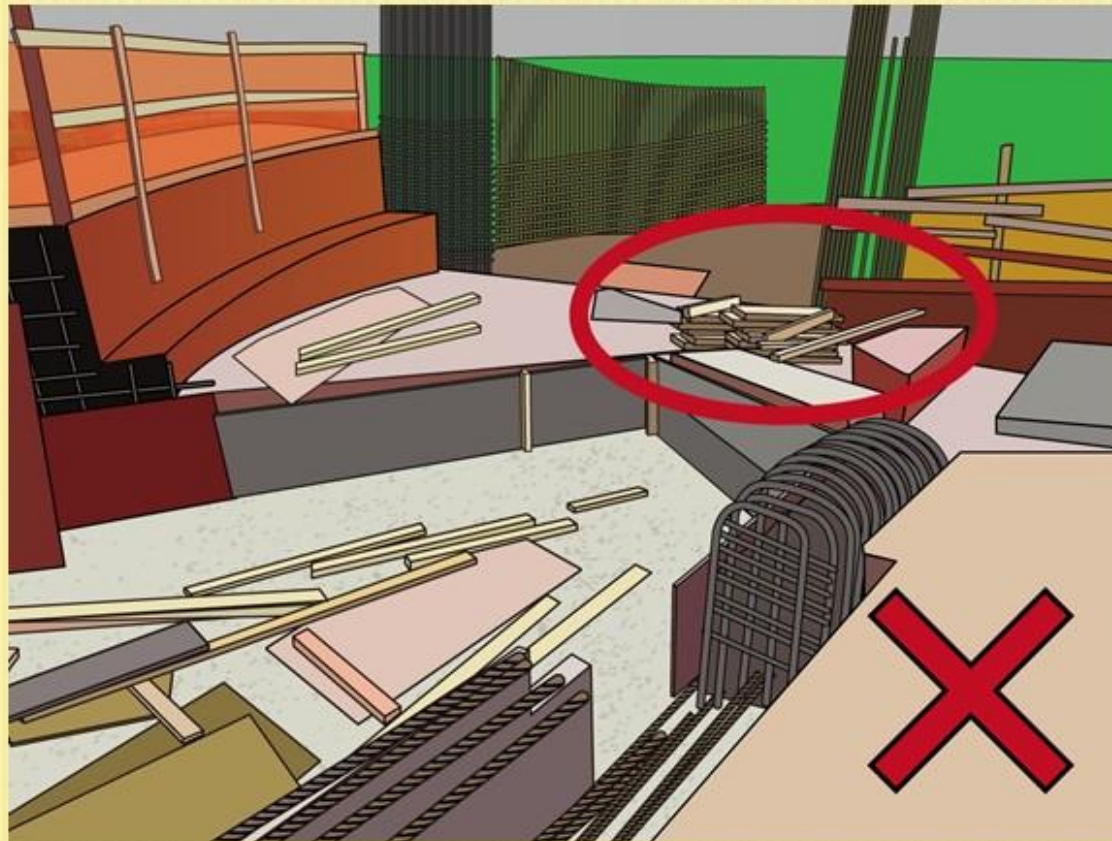
WATER PONDING ON THE CANOPY





物料阻礙通道

MATERIALS OBSTRUCTED THE WALKWAY



物料存放於臨時支架的門架上

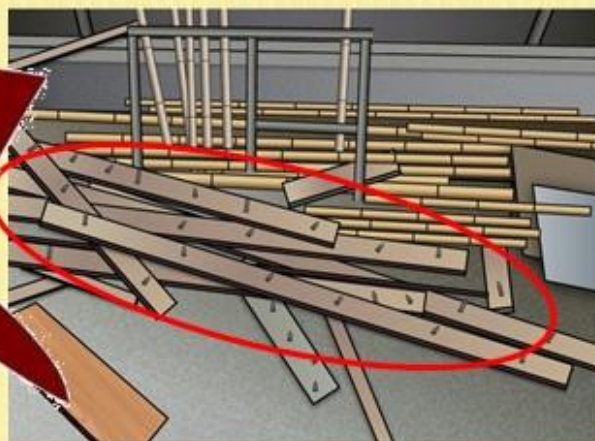
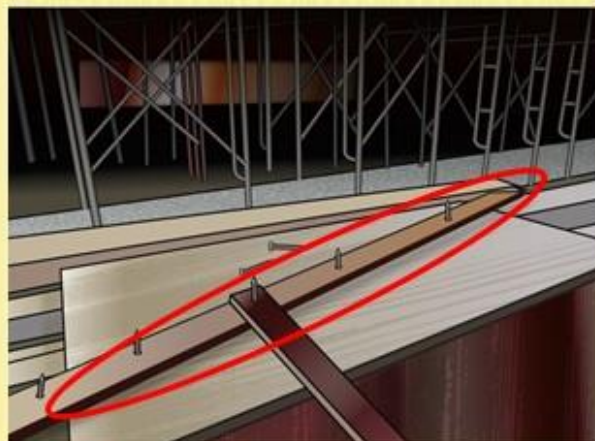
MATERIALS WERE STORED ON PLANE FRAMES OF  
FALSEWORK





突出的鐵釘。

PROJECTING NAILS WERE FOUND.



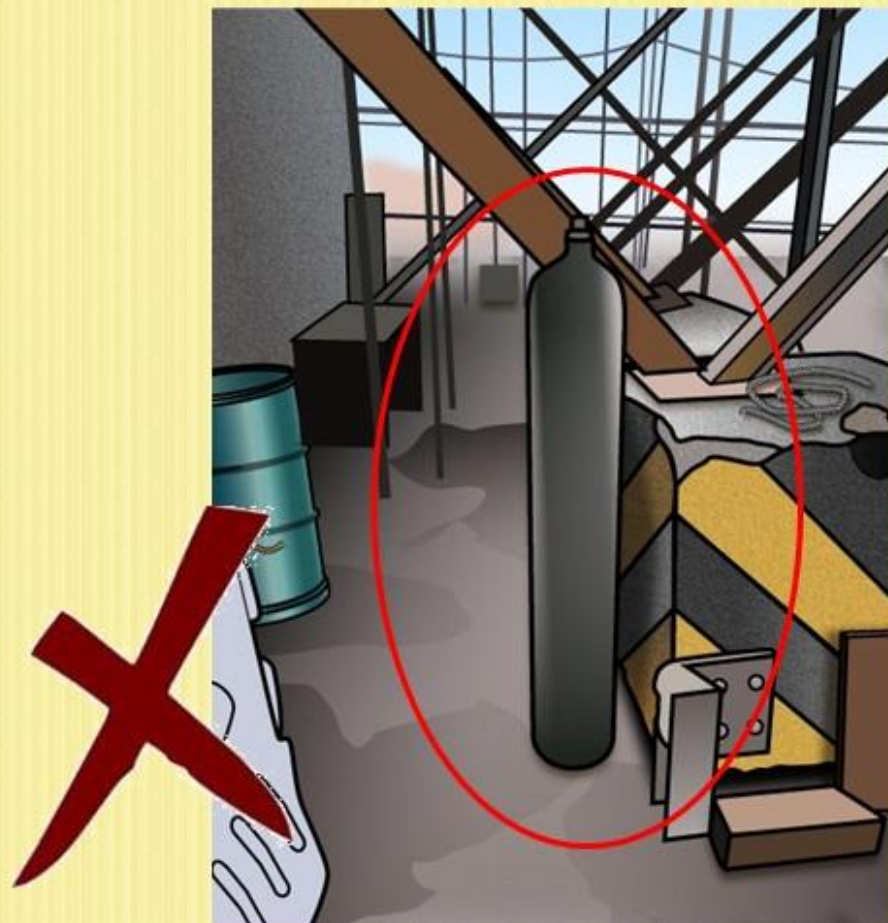


# 在通道上堆放雜物

MATERIAL WAS STORED ON THE PASSAGEWAY



沒有為氣瓶提供保護以防倒下；氣瓶沒有存放於指定地方  
GAS CYLINDER WITHOUT ANY PROTECTION AGAINST TOPPLING, AND  
NOT STORED IN DESIGNATED AREA



渠筒沒有楔好。

STACK OF PIPE SECTIONS WAS NOT WEDGED.





通往塔式起重機的通道有絆倒危害（木板）。

TRIPPING HAZARD/OBSTACLE (WOODEN PLANKS) WAS FOUND ON ACCESS LADDER TO TOWER CRANE.



鐵模板沒有足夠支撐。

PANEL FORMWORK WAS NOT SECURELY SUPPORTED.



通道上放置物料。

MATERIAL WAS PLACED ON PASSAGEWAY.





在通道上放置物料。

MATERIALS WERE PLACED ON THE PASSAGEWAY.

