

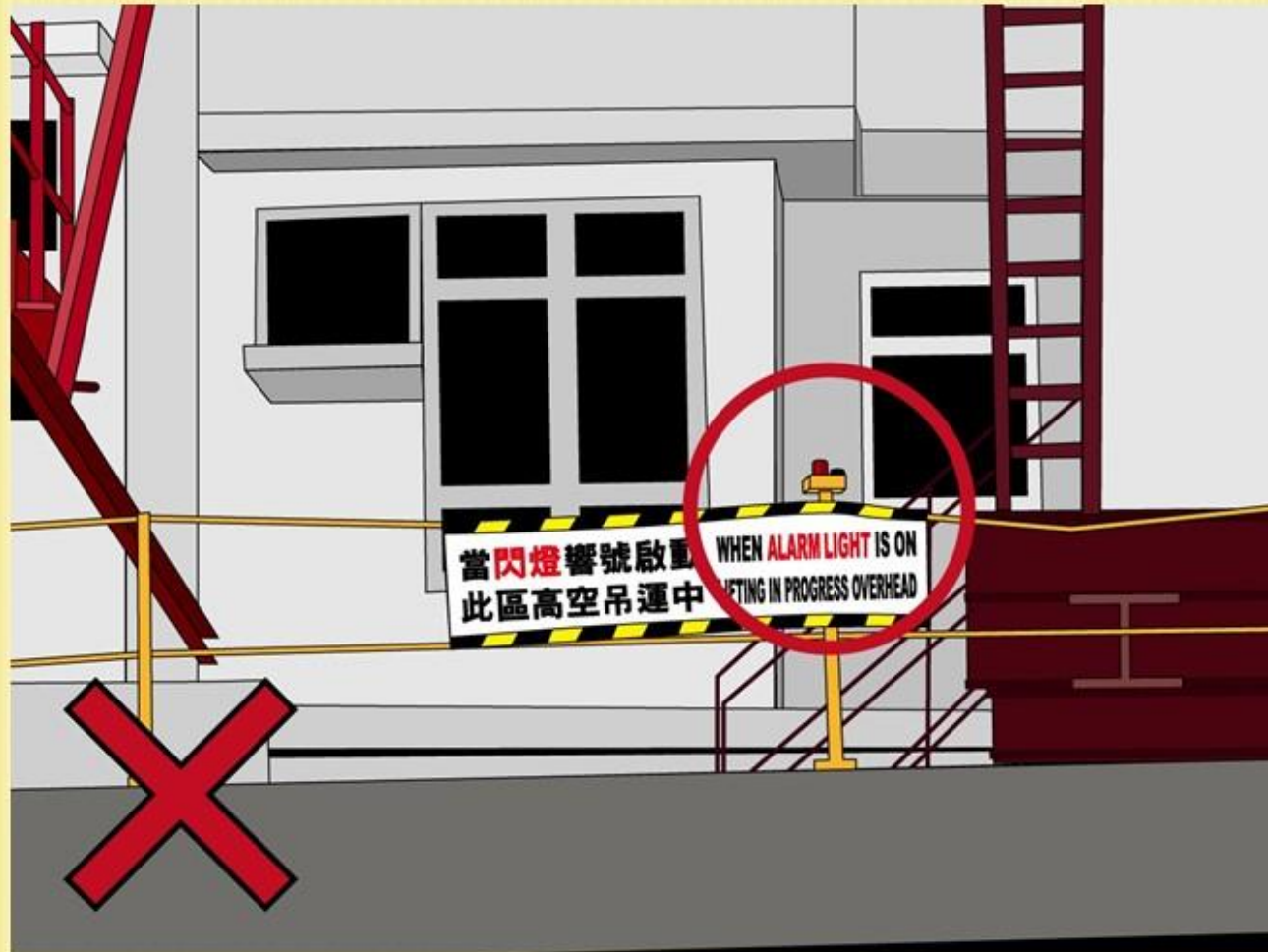


# **LIFTING OPERATIONS**

## 吊運作業

54

WARNING LIGHT OF LIFTING ZONE MALFUNCTION  
DURING LIFTING OPERATION  
吊運進行時吊運區閃燈未有亮起



# STACKS OF METAL PLATE NOT SECURED DURING LIFTING

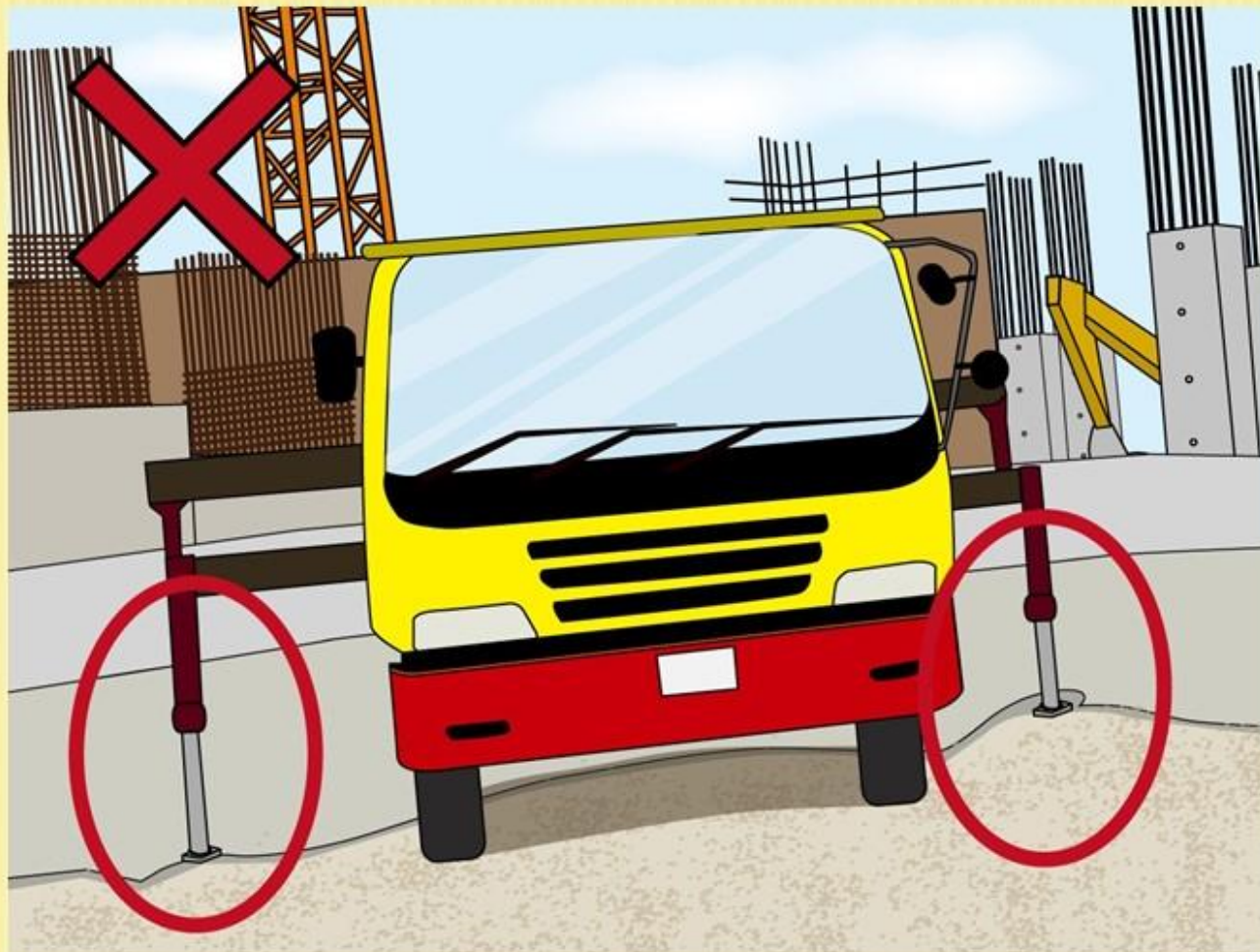
吊運中之閘板沒有被妥善穩固





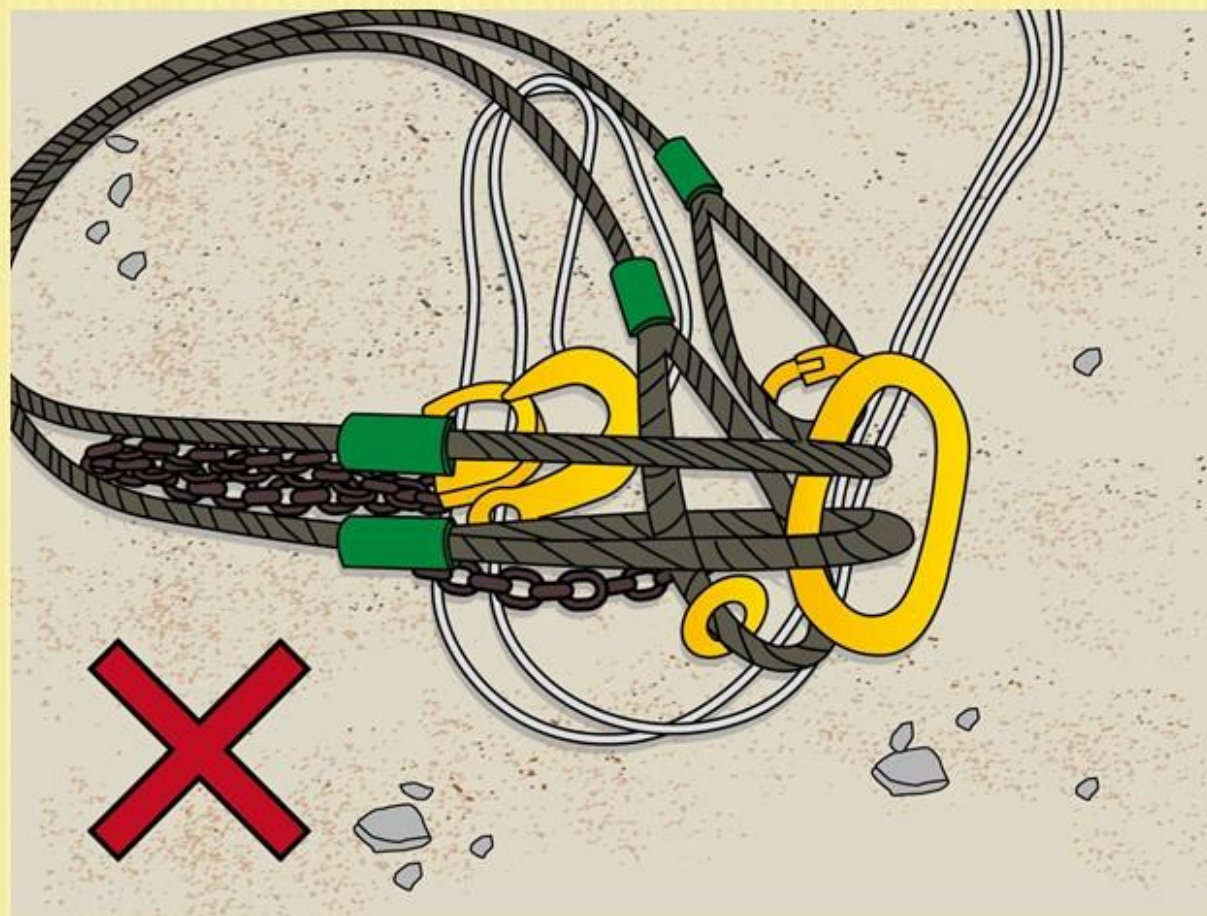
NO OUT-RIGGER PADS WERE  
PROVIDED

吊運時未有提供墊腳



起重裝置顏色代碼不正確

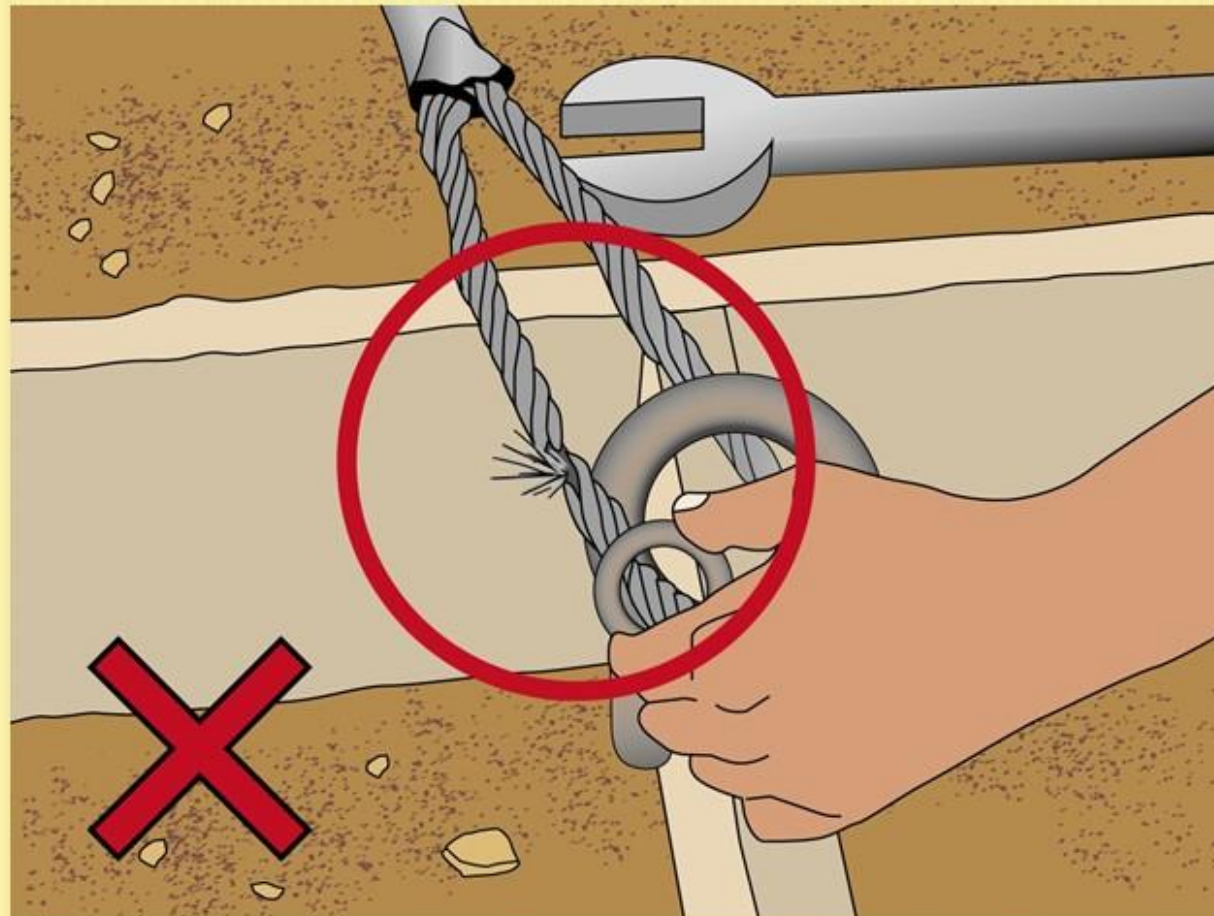
INAPPROPRIATE COLOUR CODE OF LIFTING  
GEAR





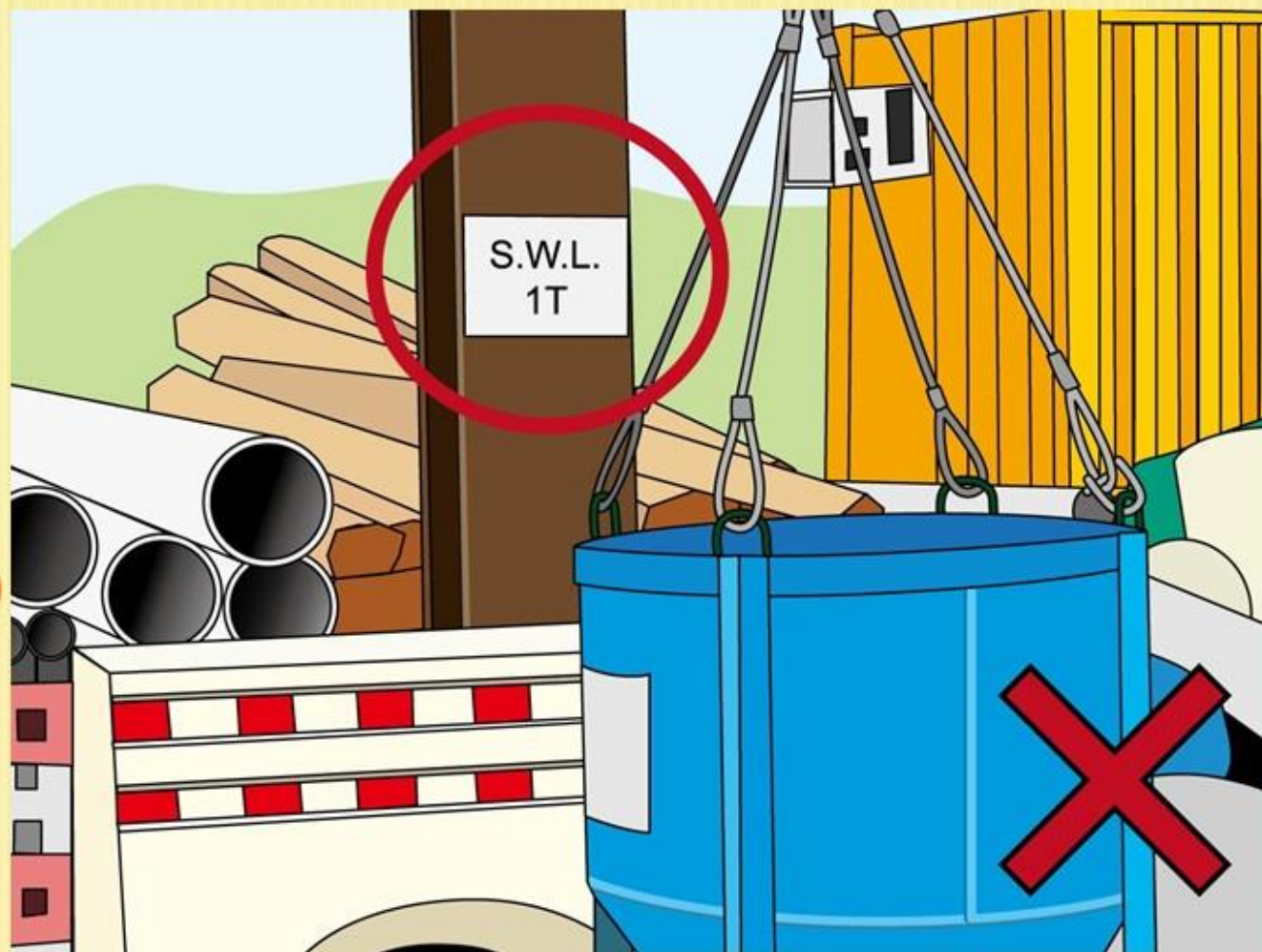
# 吊重鋼纜損毀

## DAMAGED WIRE SLING



未有展示中、英文的安全負重

**SWL NOT DISPLAYED IN BOTH CHINESE  
AND ENGLISH**

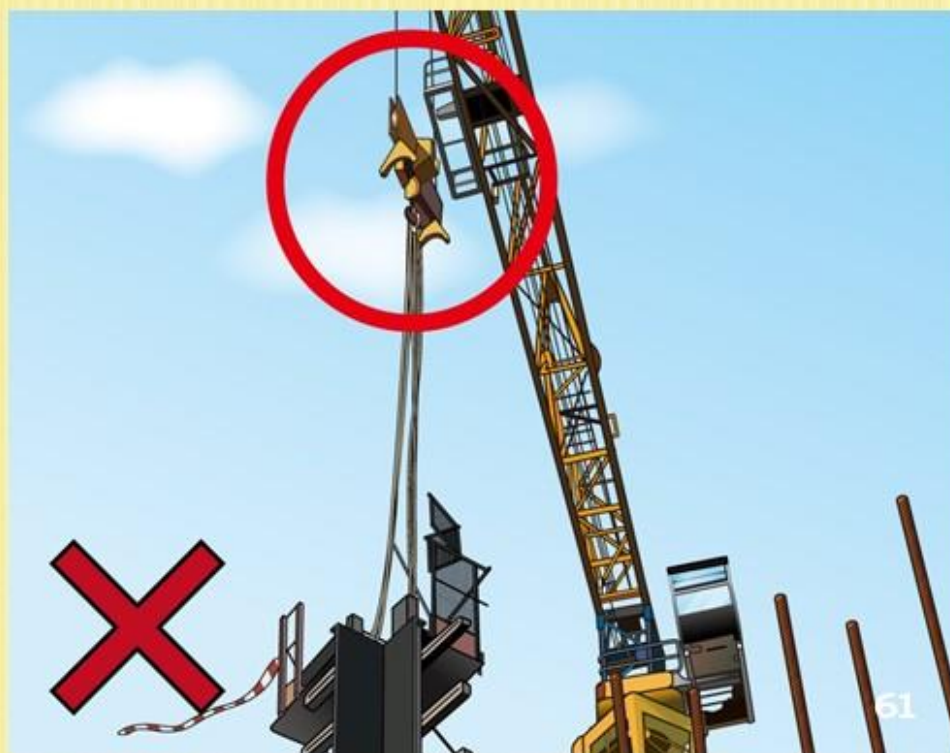




證書列明天秤是有四條吊索連接“蝦頭”，但現場發現天秤是兩條吊索“蝦頭”

TOWER CRANE WAS IN TWO HOIST ROPES CONFIGURATION BUT THE STATUTORY FORM SPECIFIED THAT TESTING WAS CONDUCTED IN FOUR HOIST ROPES.

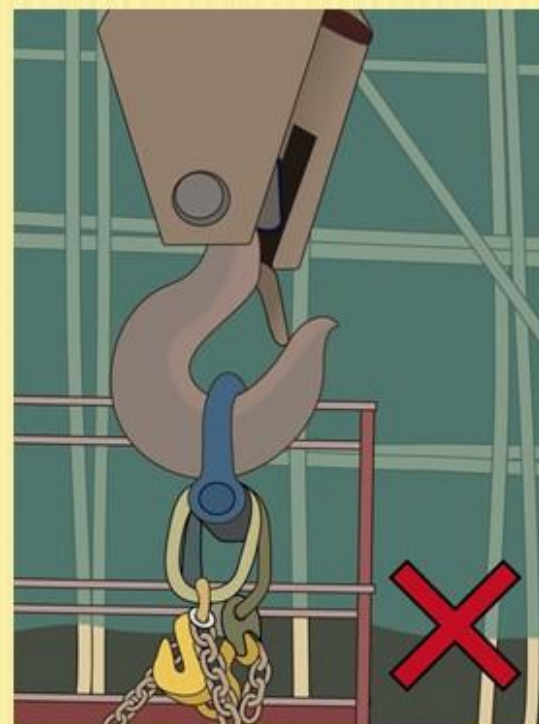
2. Name and address of maker of the appliance 機械製造廠名稱及地址	
3. Type of appliance and nature of power (e.g. Scotch derrick-manual; tower derrick-electric; rail mounted tower-electric) 機械類別及所使用的動力 (例如：蘇格蘭式人字起重機 - 人力；塔式人字起重機 - 電力；架設軌道的塔式起重機 - 電力)	Electric, Horizontal jib, Mast height 40m, Hoist rope = 4x $\phi$ 20mm. Free standing on foundation Equipped with "Top-tracing" anti-collision system





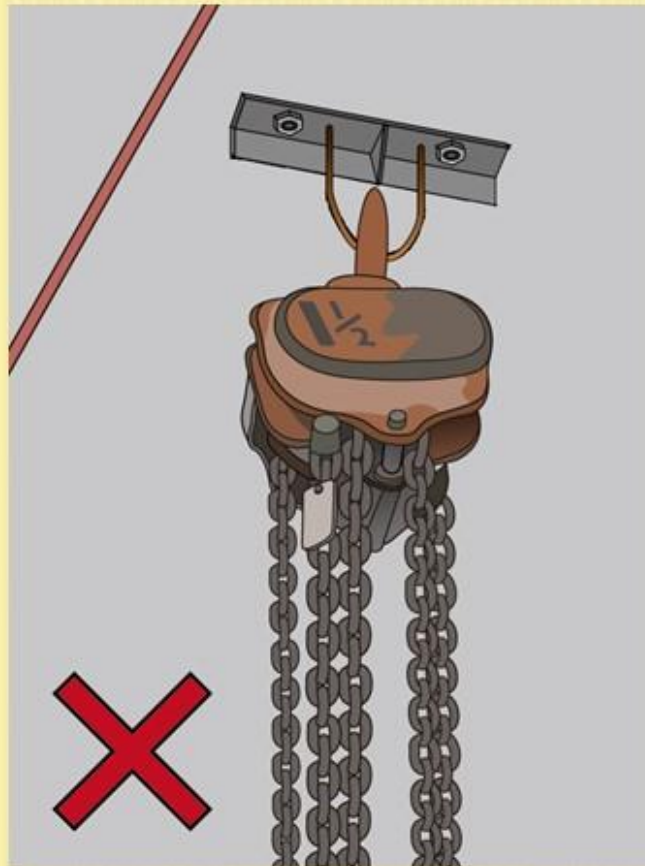
鈎環的方向不正確 – 鈎環杆應經常扣在吊鈎上  
鈎環尺寸過小，引致鈎環的方向錯誤

THE ORIENTATION OF SHACKLE WAS WRONG – THE JAW OF THE HOOK SHOULD FIT AROUND THE PIN OF SHACKLE.  
THE SIZE OF SHACKLE SEEMS TOO SMALL AND THIS MAY LEAD TO THE WRONG ORIENTATION OF THE SHACKLE



手動絞轆掛放於沒有檢驗的掛勾上，而安全操作負荷亦沒有以中文展示

MANUAL LIFTING APPLIANCE MOUNTED ON A BRACKET WITHOUT EXAMINATION CERTIFICATE AND THE SAFE WORKING LOAD WAS NOT MARKED IN CHINESE





沒有使用穩固方法，吊運長短不一鬆散物料

INSECURE SLINGING OF LOOSE MATERIALS OF  
IRREGULAR LENGTH



吊起預製樓梯的方法不正確：樓梯的四個吊眼中，只使用了兩個  
INCORRECT LIFTING OF THE FACADE STAIRCASE - ONLY  
TWO OF THE FOUR LIFTING EYES WERE USED





## 物料斗沒有清楚顯示安全操作負荷 SWL WAS NOT MARKED ON RECEPTACLES.

