

Audit Unit Development & Construction Division
Experience Sharing Session with Building Contractors Mar 2008



EXPERIENCE SHARING SESSION on SITE SAFETY, QUALITY & WORKMANSHIP

with
Building
Contractors
4 March 2008



SITE SAEFTY

Incidents

Working Platform / Floor

Scaffolding

Lift Shaft Openings

Working Environment

Storage on Ground

Electric Live Cable



QUALITY & WORKMANSHIP

Housekeeping

Insitu Concrete

Formwork

Reinforcement

Precast Facade Units

Components

Finishings



QUALITY & WORKMANSHIP

Ironmongery

Masonry

Metal Work

Waterproofing

Sanitary Fittings

Plumbing & Drainage

External & Landscape Works

Slope Treatment Works



SITE SAFETY





SITE SAEFTY

Incidents

Working Platform / Floor

Scaffolding

Lift Shaft Openings

Working Environment

Storage on Ground

Electric Live Cable



INCIDENT

Incident of Tilted Lorry with Crane





8 Case 1



Case 2

A faded background image of a construction site showing a worker in a hard hat and safety vest standing on a rebar structure. The text 'WORKING PLATFORM / FLOOR' is overlaid in large, bold, dark green letters.

WORKING PLATFORM / FLOOR



Working Floor / Safety



NO Toeboard



No close boarding
at floor opening





Working Floor / Safety

Working platform lack of maintenance



28/08/2006

[CON 2.WT020.4]



Working Floor / Safety

Working platform lack of maintenance



[CON 2.W1020.4]



Working Floor / Safety

Toe board missing at several locations



[CON 2.D420.4]



Working Floor / Safety

Railing not rigid and not to required height





Working Floor / Safety

No fencing at tower crane opening





Working Floor / Safety Insufficient safety railing



[PRE.B10.1010.4]



Working Floor / Safety Insecure safety railing



[PRE.B10.1010.4]



Working Floor / Safety

No planking and toe board & building materials stacked





Working Floor / Safety

Improper boarding to floor opening





Working Floor / Safety

Lift Shaft Working Platform

NOT all the brackets were securely fixed with tie bolts





Working Floor / Safety

No external fencing





Working Floor / Safety

No external railing provided





Working Floor / Safety

No external fencing





Working Floor / Safety

No external fence to material delivery platform





Working Floor / Safety

External fence provided but NOT acceptable



Suggest to require contractor's Method Statement of Material Delivery to ensure safety



Working Floor / Safety

Insecure access walkway from main roof to upper roof





Working Floor / Safety

Swing gate left open for ease of concreting





Working Floor / Safety

PVC conduits & bags of materials stockpiled





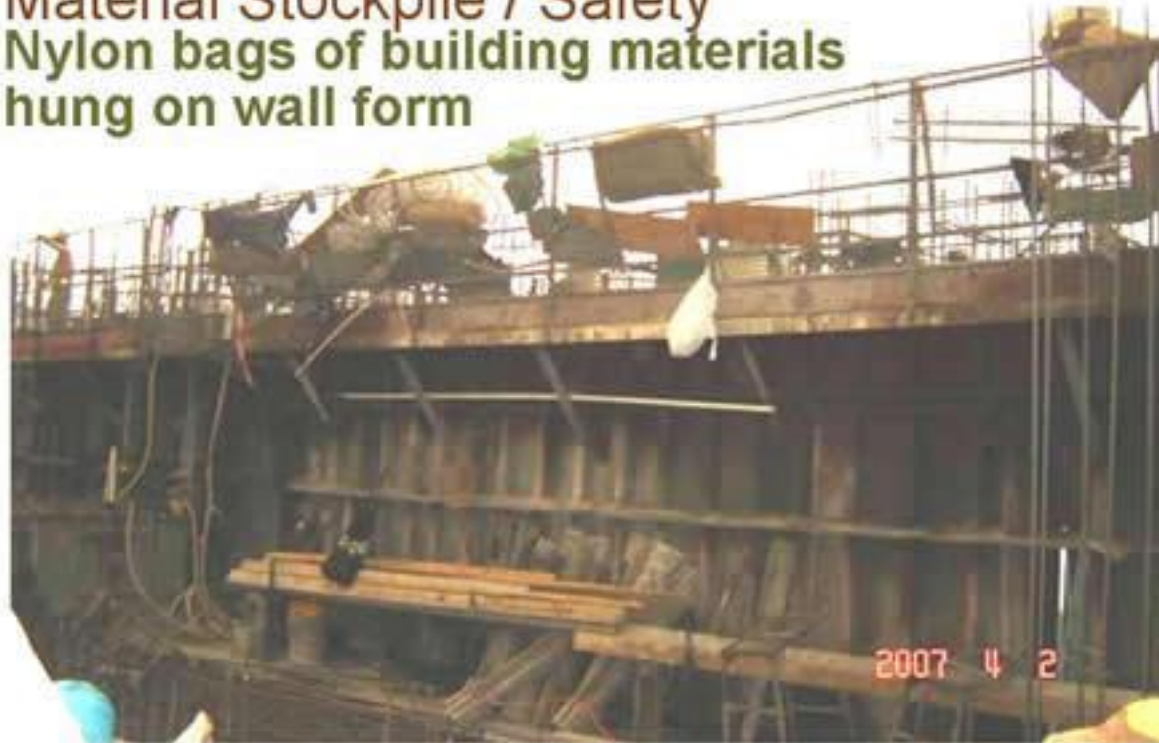
Working Floor / Safety

The building materials should not be stacked on the **working platform** at any time





Material Stockpile / Safety Nylon bags of building materials hung on wall form



[CON2.W110.4]



Working Floor / Safety

Standing on the top of PCF unacceptable





Working Floor / Safety

Standing on the top of the steel bars was unacceptable





Working Floor / Safety

Using timber plank as working platform should be stopped at once

