



SANITARY FITTINGS





Insufficient space for pop-up of basin

Suggested ways for improvement



1. Choose slim mixers, mixers inclined from wall or basin with greater space
2. Adjust length of pop-up rod
3. Adjust screws in drain plug to suit pop-up length
4. Bend the projected part of pop-up rod



[Experience Sharing Sheet PLU-3]



WC Cistern – Rust at Piston Rod

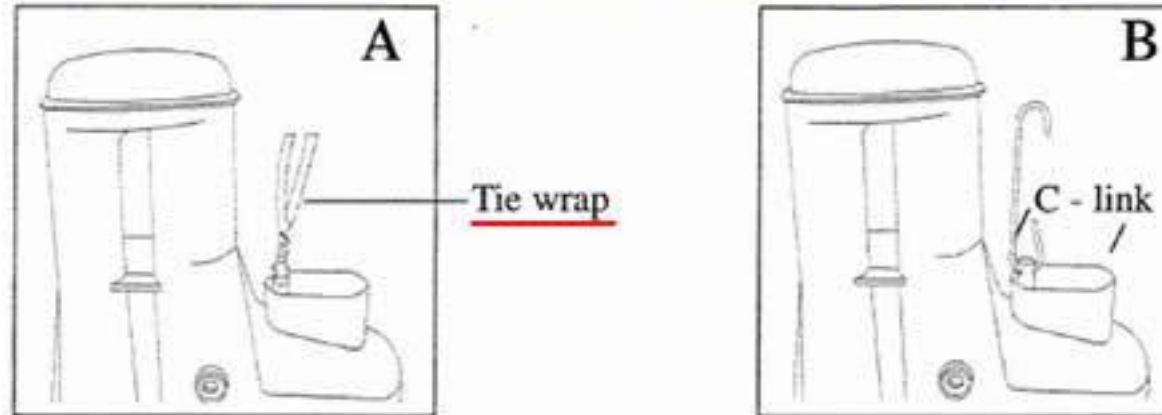
Temporary tie wrap NOT removed after installing the C-Link, causes RUST at piston rod





WC Cistern – Rust at Piston Rod

Temporary tie wrap HAVE to be removed after installing the C-Link, causes RUST at piston rod



Push the piston assembly from the bottom, inside the housing of the siphon and remove the tie wrap from the piston rod (shown in picture 'A'), insert the c-link into the piston rod as shown in picture 'B'.



WC Cistern - Inadequate Flushing

Water level adjusting valve
controls volume of flushing





WC Cistern - Inadequate Flushing

Water level adjusting valve IN PLACE





WC Cistern - Inadequate Flushing

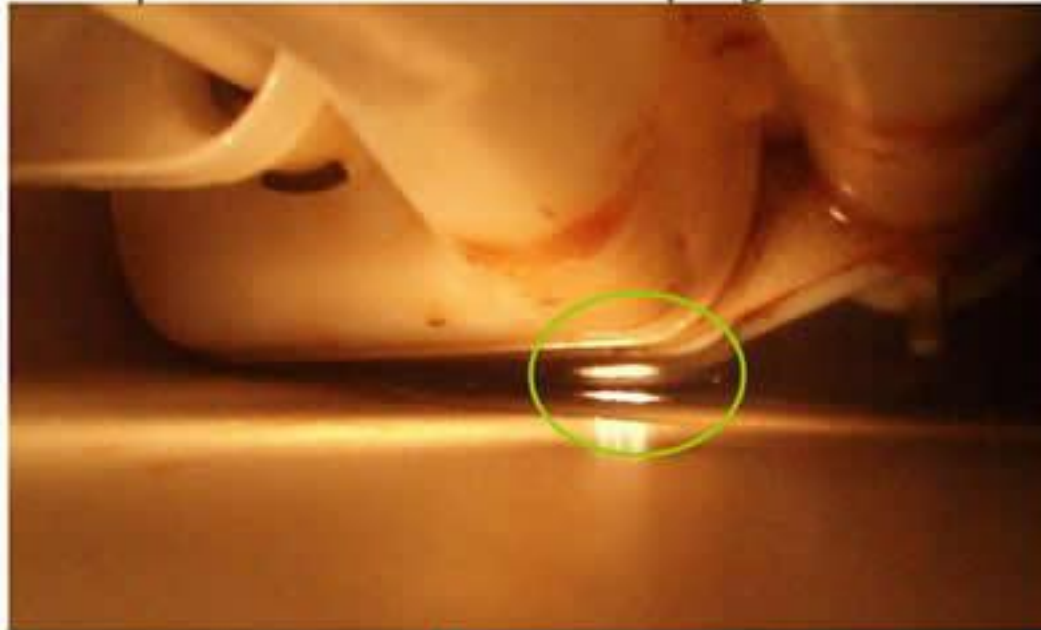
Water level adjusting valve LOST





WC Cistern - Inadequate Flushing

Flushing device too big,
no space to access to the plug





Cistern Lever not Properly Fixed

Lever fixing gasket outside NOT follow the tank profile, easy to get loose





Cistern Lever not Properly Fixed

Flat bolts inside cannot hold tight on curve surface



Circular shape
plastic nuts may
solve the problem





Cistern Lever not Properly Fixed

Lever position affects turning action



Need a bigger turn



Lever too high,
obstructed by the lid



Mixer Connection Leakage

Diameter of rubber ring too small, flush with surface. No gasket function





Press Button Not Released after Flushing

Flat & smooth plastic surfaces stuck together





Wrong Connection of Hot/Cold Water at Wash Hand Basin

Level of pipe connections from re-entrant to bath room may vary to handed flats



Plumber need to check incoming pipes before fixing



PLUMBING & DRAINAGE





Copper Pipes

Patina found on bare copper pipes



At External Wall



Copper Pipes Inadequate Workmanship



Not properly cleaned





Pipes through Structure from Pump Room **NOT** caulked with mineral wool and fire-rated mastic





Pipes Through Floor Slab

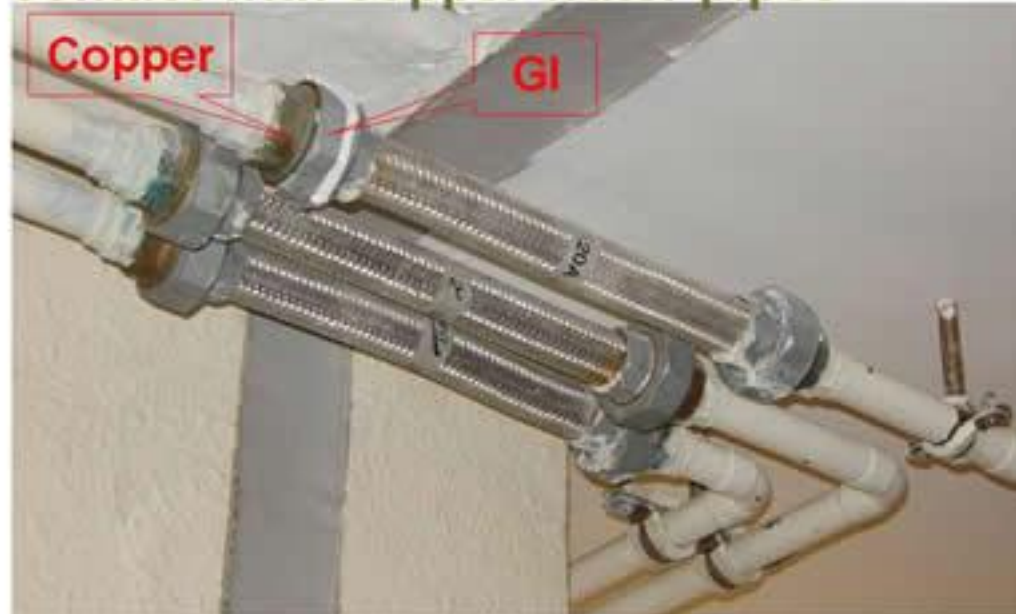
NOT use proper / approved jointing materials





Flexible Pipe Connector

G.I. nuts of flexible connector in direct contact with copper water pipes





Flexible Connector for Pipeworks

Not provided at structural movement joint





Mica Flap at Fresh Air Inlet

Fixed inside, flap too rigid to allow fresh air intake





Mica Flap at Fresh Air Inlet

Hinged ss flaps allow fresh air intake

But not air tight to stop foul air emission



TYPICAL SECTION OF
FRESH AIR INLET

SCALE:- DIAGRAMMATIC



Mica Flap at Fresh Air Inlet

Movable plastic flap allows air intake



Video Demonstration





Kitchen/Bathroom* Floor Drain Grating Installed lower than the finished floor level

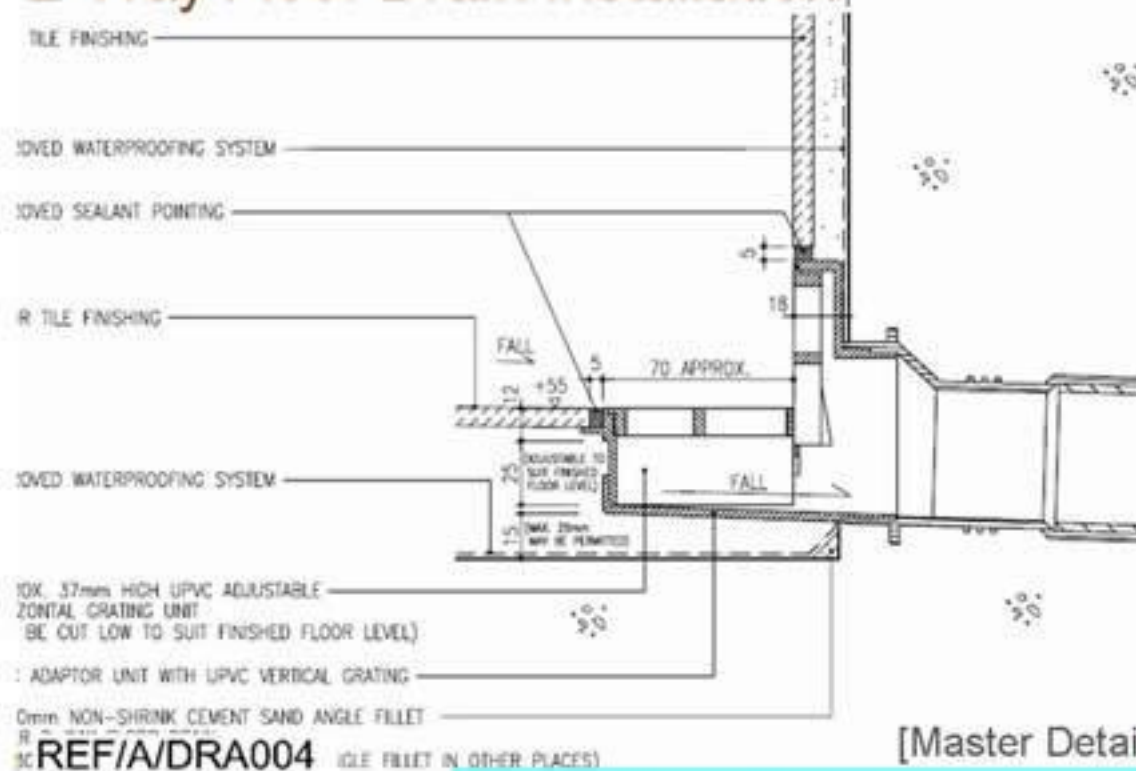


Lead to slow water discharge

*Bathroom without sunken shower



2-Way Floor Drain Installation





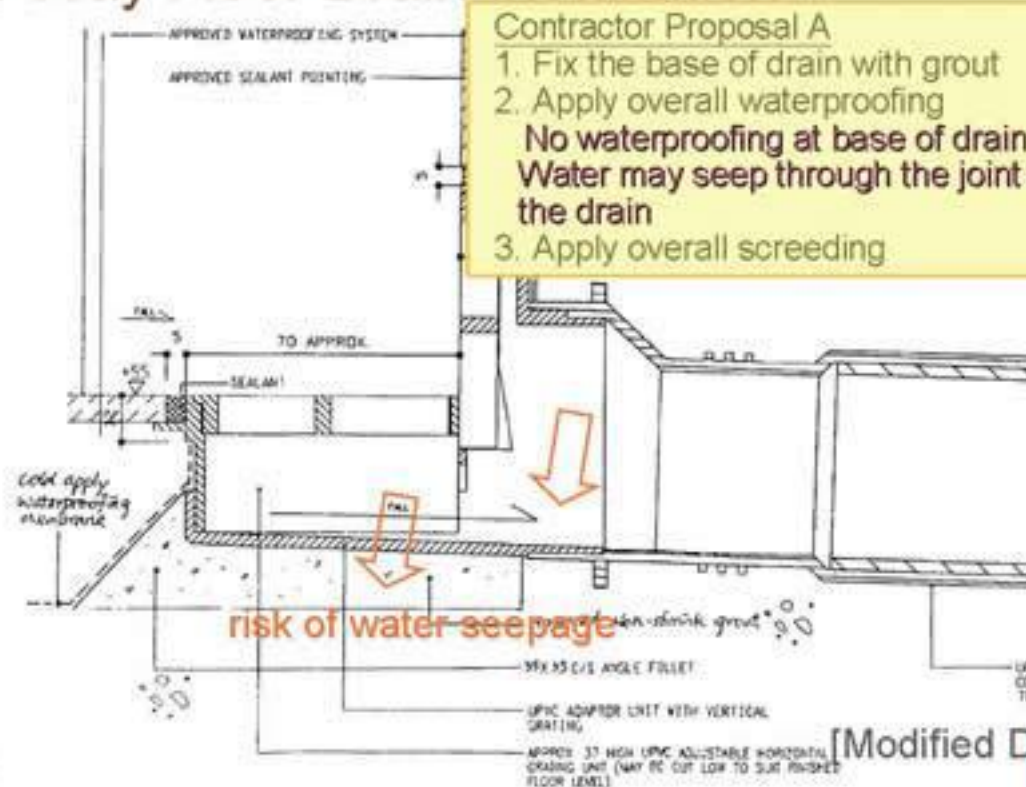
2-Way Floor Drain Installation



Casting of drain in concrete may not be precisely in position for a tight fit of the grating



2-Way Floor Drain Installation



[Modified Detail]



2-Way Floor Drain Installation

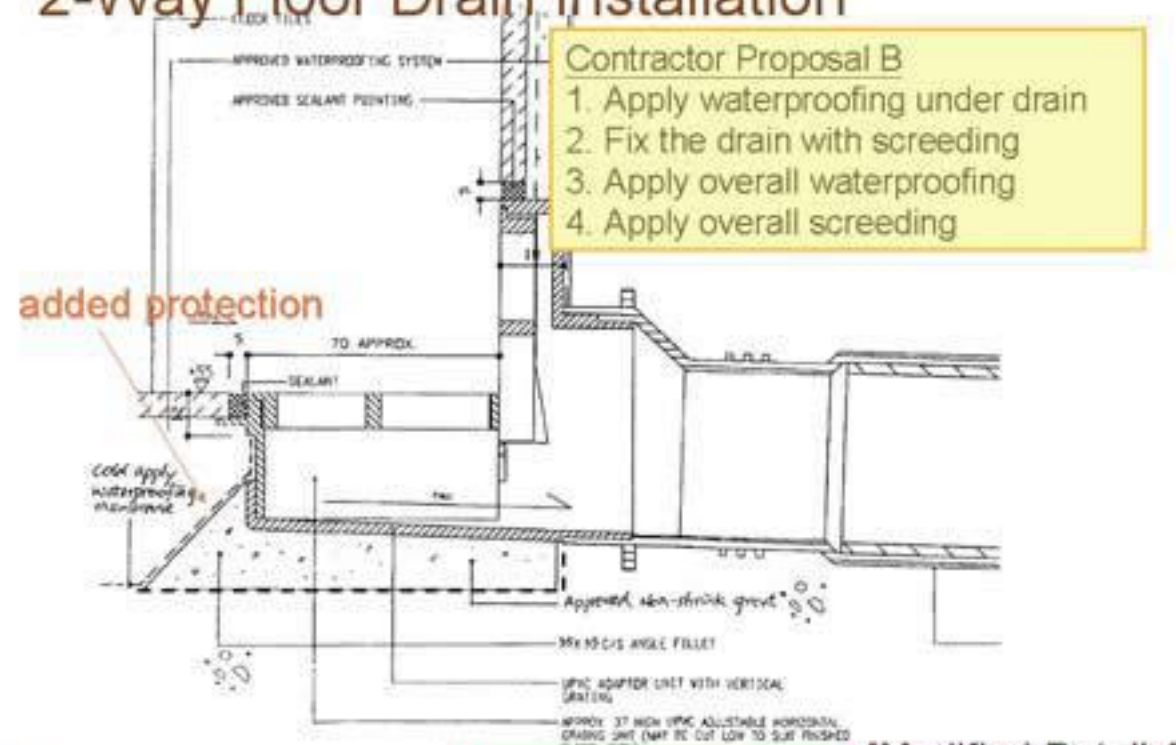
Contractor Proposal A – risk of water seepage



1. Fix the base of drain with grout
2. Apply overall waterproofing
No waterproofing at base of drain
Water may seep through the joint of the drain
3. Apply overall screeding



2-Way Floor Drain Installation



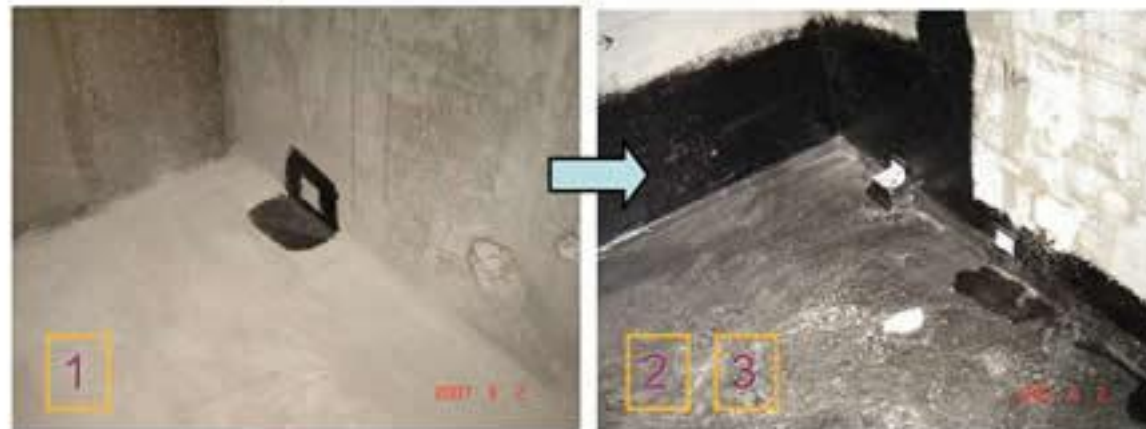
Contractor Proposal B

1. Apply waterproofing under drain
2. Fix the drain with screeding
3. Apply overall waterproofing
4. Apply overall screeding



2-Way Floor Drain Installation

Contractor Proposal B – added protection



1. Apply waterproofing under drain
2. Fix the drain with screeding
3. Apply overall waterproofing
4. Apply overall screeding



Pipe Support on Roof

Pipes in contact with concrete support causes rusting



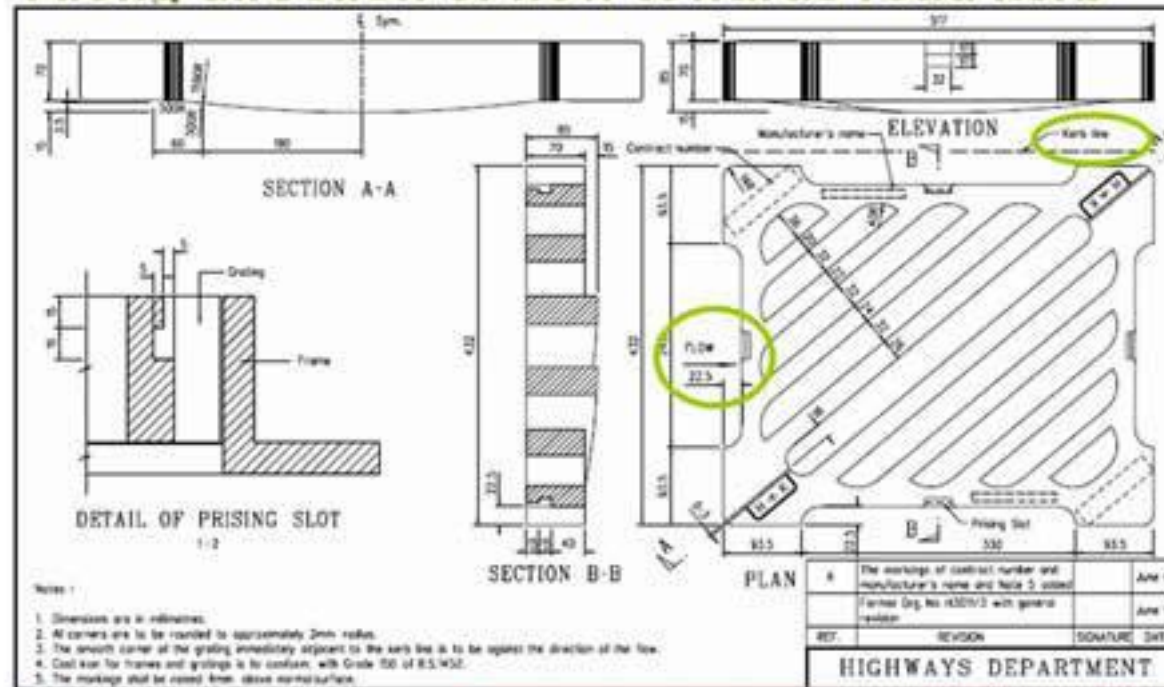


Laying of Road Gully Grating Along direction of flow towards road kerb





Laying of Road Gully Grating Along direction of flow towards road kerb





Laying of Underground Pipes

NOT proper joint fitting applied





Identification of Manhole Type

Not engraved to frame
but by metal plates
as remedial work





EXTERNAL & LANDSCAPE WORKS





Drainage under Safety Mat Not working properly





Lamp Pole and U-channel Not properly coordinated





SLOPE TREATMENT WORKS



Improper protection on slope surface





Improper protection on slope surface

