



# **SITE SAFETY Focus Seminar**

on New Works of  
Housing Department



**Site Safety** issues at -

**Working Floor / Platform**

**Scaffolding**

**Lift Shaft Openings**

**Working Environment**

**Storage on Ground**

**Electric Live Cables**

**Housekeeping**

**Slope Works**



# WORKING FLOOR / PLATFORM





# Steel Working Platform



**NO toe board**



**NO close boarding  
at floor opening**







# Steel Working Platform cases rectified



toe board



close boarding  
at floor opening







# Steel Working Platform floor board stuck / tilted

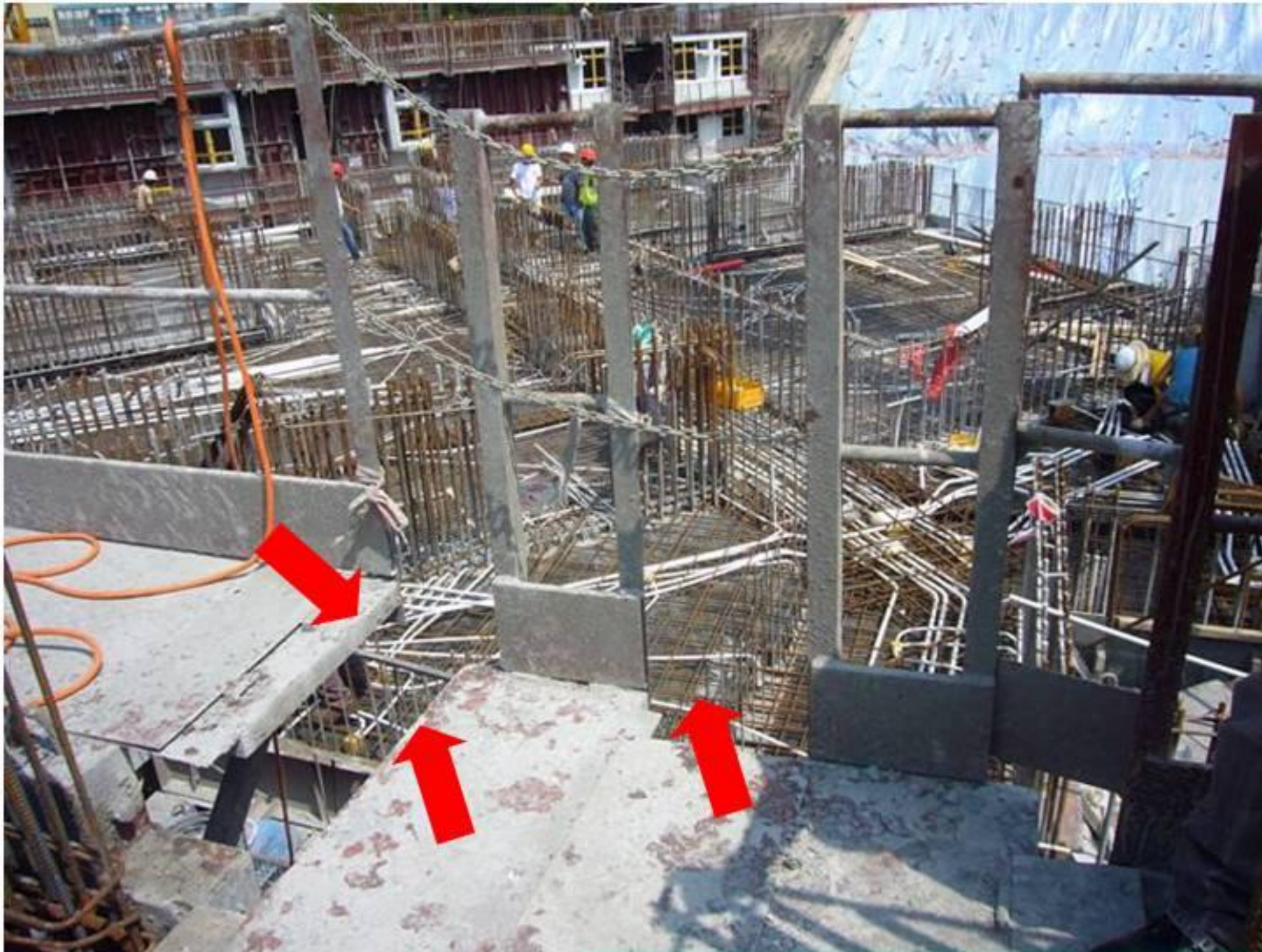






# Steel Working Platform

## **NO toe board at several locations**







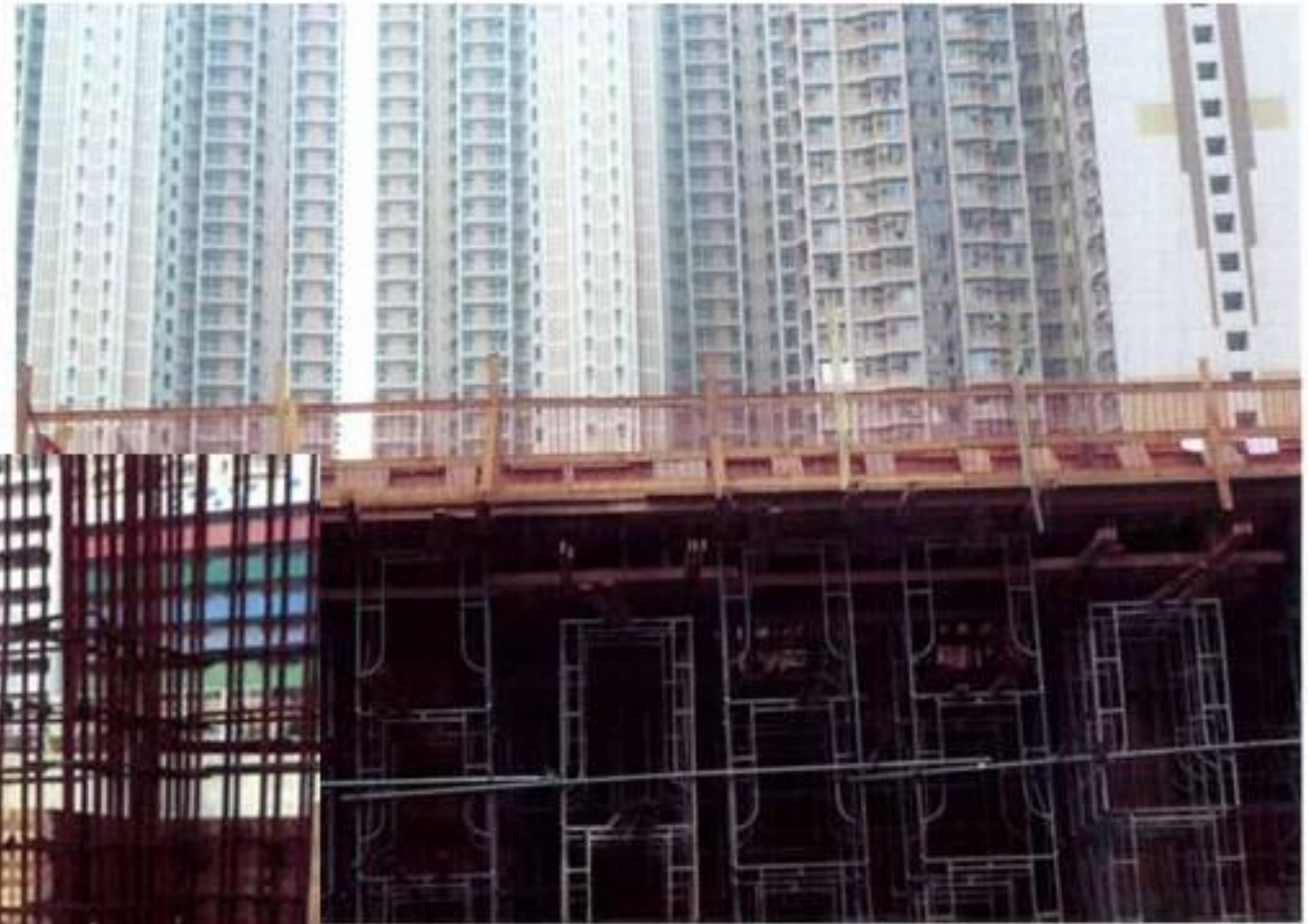
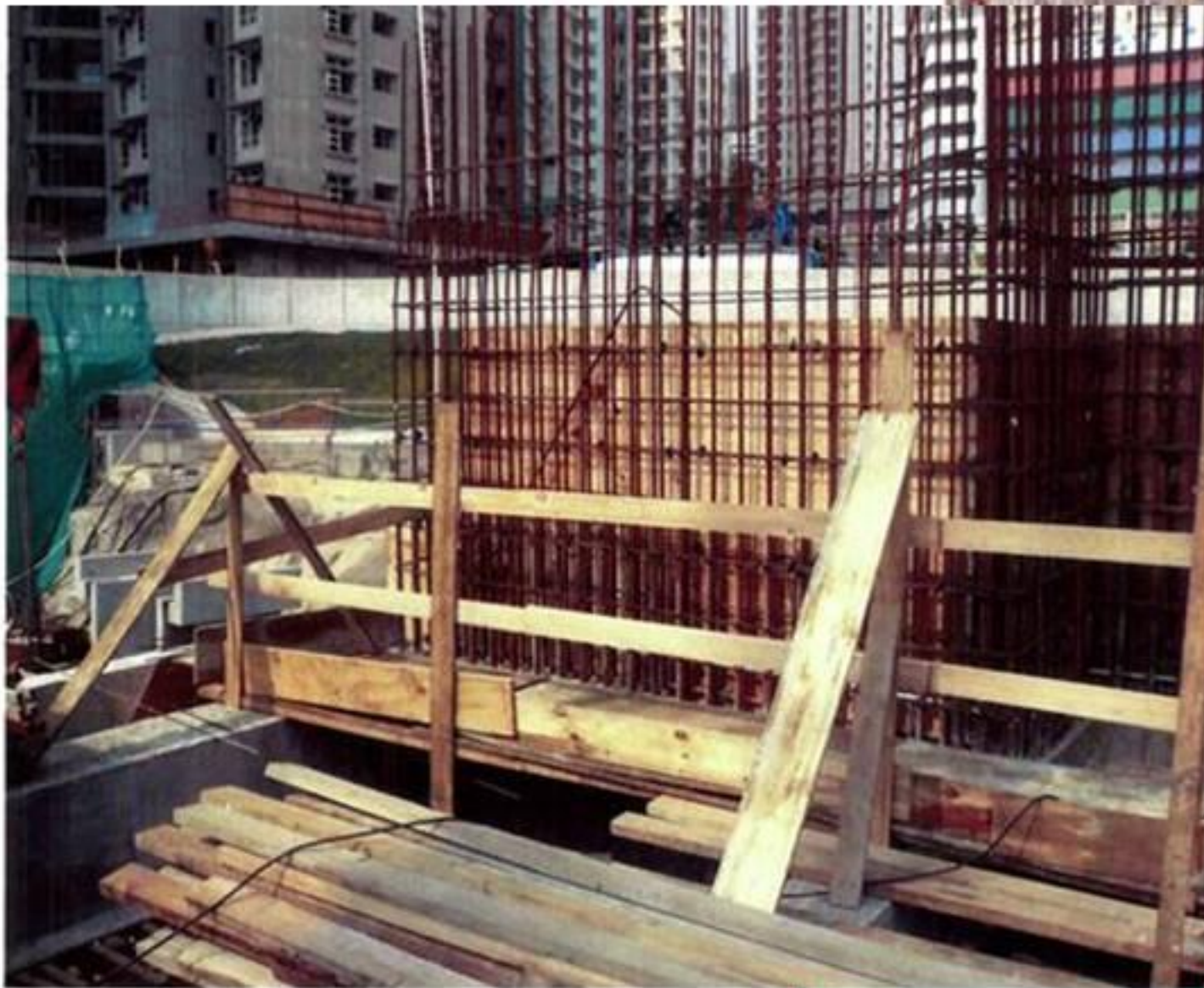
# External Railing NOT rigid and proper







# External Railing made rigid







# External Railing

## NO railing provided







# External Fencing

## NO external fencing







# External Fencing fencing provided







# External Fencing NOT provided to material delivery platform







# External Fencing provided



Suggest to submit  
contractor's  
**Method Statement  
of  
Material Delivery**  
to ensure safety





# Tower Crane Opening

## NO fencing







# Tower Crane Opening fencing provided







# External Railing insufficient safety railing







# External Railing

## **insecure safety railing**







# Working Floor

**building  
materials  
stacked**



**NO planking  
& toe board**





# Floor Opening improper boarding







# Floor Opening boarding provided







# Lift Shaft Opening / Platform

not all brackets securely fixed with tie bolts







# Swing Gate at Working Floor left open for ease of concreting







# Swing Gate at Working Floor

## GOVERNED by steel chains







# Materials Stockpile at Working Floor

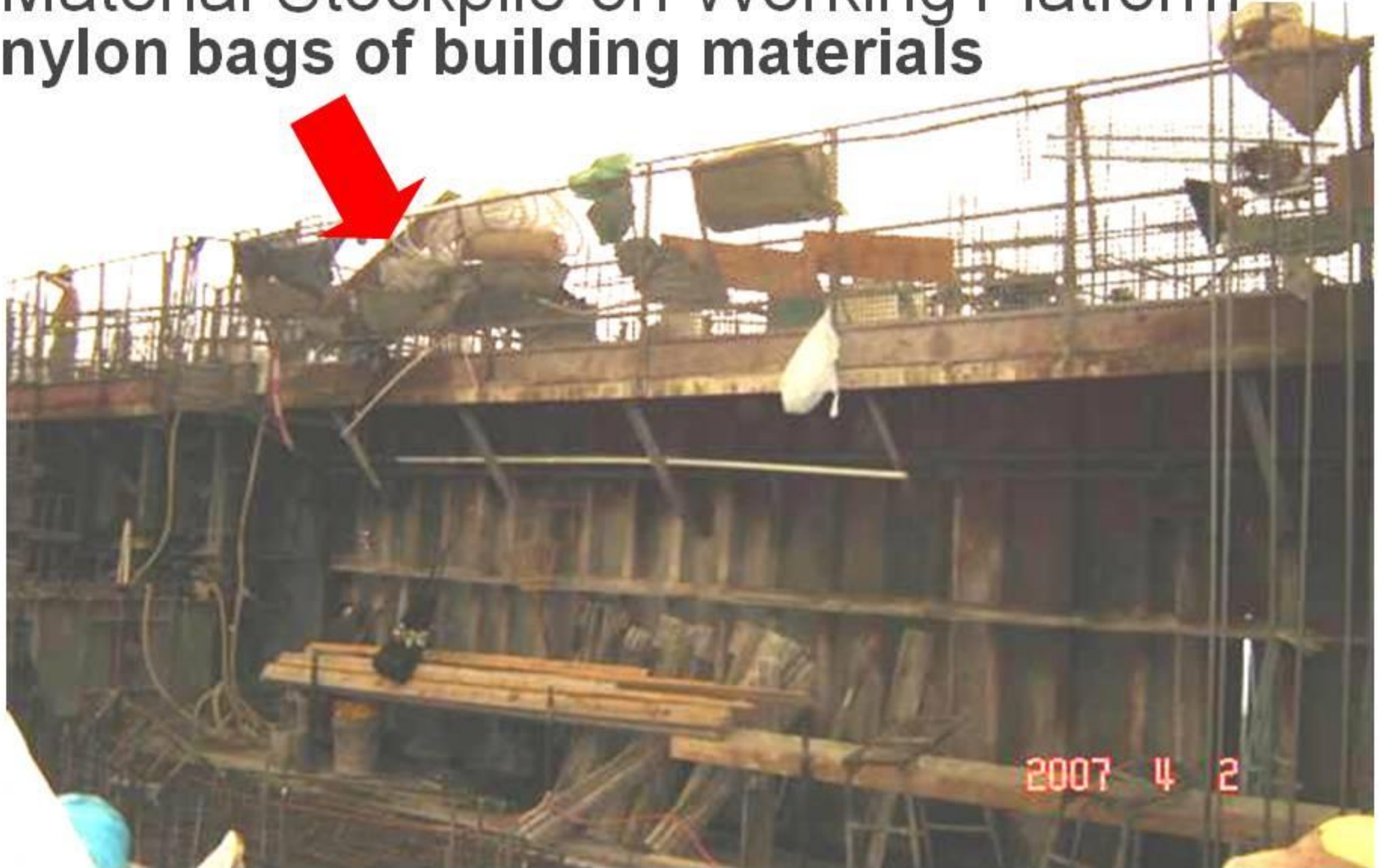
## PVC conduits & bags of materials stockpiled







# Material Stockpile on Working Platform nylon bags of building materials







# Working Platform NOT provided







# Working Platform standing on the top of the steel bars absolutely unacceptable







# Working Platform using timber plank as working platform should be stopped at once







# Unsafe Working Platform for Worker







# Unsafe Working Platform for Worker







# Unsafe Working Platform for Worker







# Unsafe Working Platform for Worker



09/01/2008





# Unsafe Working Platform for Worker







# Works at Height

**NO proper platform for works at above 2m high**







# Works at Height

## steel platform provided







# Working Platform



**NO floor boarding**

**NO railing  
at stair**







# SCAFFOLDING





# Scaffolding Support supporting bracket for roof water tank scaffold NOT fixed properly



supporting bracket  
detached from structure







# Scaffolding Support timber boards nailed to bamboos







# Scaffolding Support

1. improper working platform
2. NO safety belt and lifeline provided



2007-10-29 17:11





# Scaffolding Support debris on existing scaffolding







# LIFT SHAFT OPENINGS





# Protection to Lift Shaft Opening gap left at toe of barrier







# During Lift Door Installation toe board and warning sign not provided







# During Lift Door Installation toe board and railings not provided







# Proper Toeboard to Lift Shaft Opening







# WORKING ENVIRONMENT





# Stacking Formwork on Temporary Platform platform over public road without end gate







# Stacking Formwork on Temporary Platform platform with end gate installed







# Operation on Temporary Platform platform with end gate installed and worker in safety harness







# Operation on Temporary Platform platform with fencing at the end installed







# Hoisting of Precast Facade Unit improper material lifting with PCF







# Large Panel Formwork hardened concrete laitance NOT cleaned before re-use



**Risk of falling object  
when handling  
formwork at height**

28/08/2006





# Open Excavation

## NO protection to edge of excavation







# Railing on Slope

## improper fixing of temporary railing







# Railing on Slope

## improper fixing of temporary railing







# Railing on Slope

## NO proper barrier / fencing







# Site Access

**NO proper safe access to working areas**







# Site Access

**NO proper safe access to working areas**







# Railing to Slab Edge **NOT** provided at staircase half landing







# Railing to Edge Slab

## NO protective railing at slab edge







# Protection to Floor Opening

## NO railing and toe board provided







# Protection to Floor Opening

## NO railing / closed board to slab opening







# Protection to Floor Opening

trench not covered up properly by timber boards or other suitable material







# Long Formwork Tie Rods excessively long projection / endanger workers







# Nails on Timber Formwork NOT removed after striking







# Gondola Wire / Safety NOT properly protected







# Safety Lifeline NOT properly protected







# Gondola Wire / Safety protective rubber wrong way installed

cut end of tubing  
not protecting  
the wire from the  
sharp corner



cut end of tubing  
facing upwards  
can protect  
the wire from the  
sharp corner





# Safety Lifeline NOT properly fixed







# Protection to Dangerous Materials

gas cylinders to be kept locked and at upright







# Debris Discharge Point at GF metal door unlocked and opened







# STORAGE ON GROUND





# Storage of Large Panel Formwork rested on timber strips and uneven ground







# Storage of Large Panel Formwork rested on timber strips and uneven ground







# Storage of Large Panel Formwork

**loosely lean on  
a precast facade  
causing danger to  
nearby workers**







# Storage of Large Panel Formwork

## One not stored to the approved method statement







# Storage of Large Panel Formwork supported with steel struts







# Storage of Large Panel Formwork improper storage







# Storage of Precast Facade Units supporting stands NOT rest on level ground







# Storage of Precast Facade Units stored NOT against the stand







# Storage of Precast Units

## precast refuse chutes stored NOT on firm base







# Storage on Ground stacking of timber boards at crest of slope endanger workers







# **ELECTRIC LIVE CABLES**





# Electric Cables Lying on Ground

**cases more frequently noted**







# Electric Cables Lying on Ground cases more frequently noted







# Electric Cables Lying on Ground lying on the floor without protection







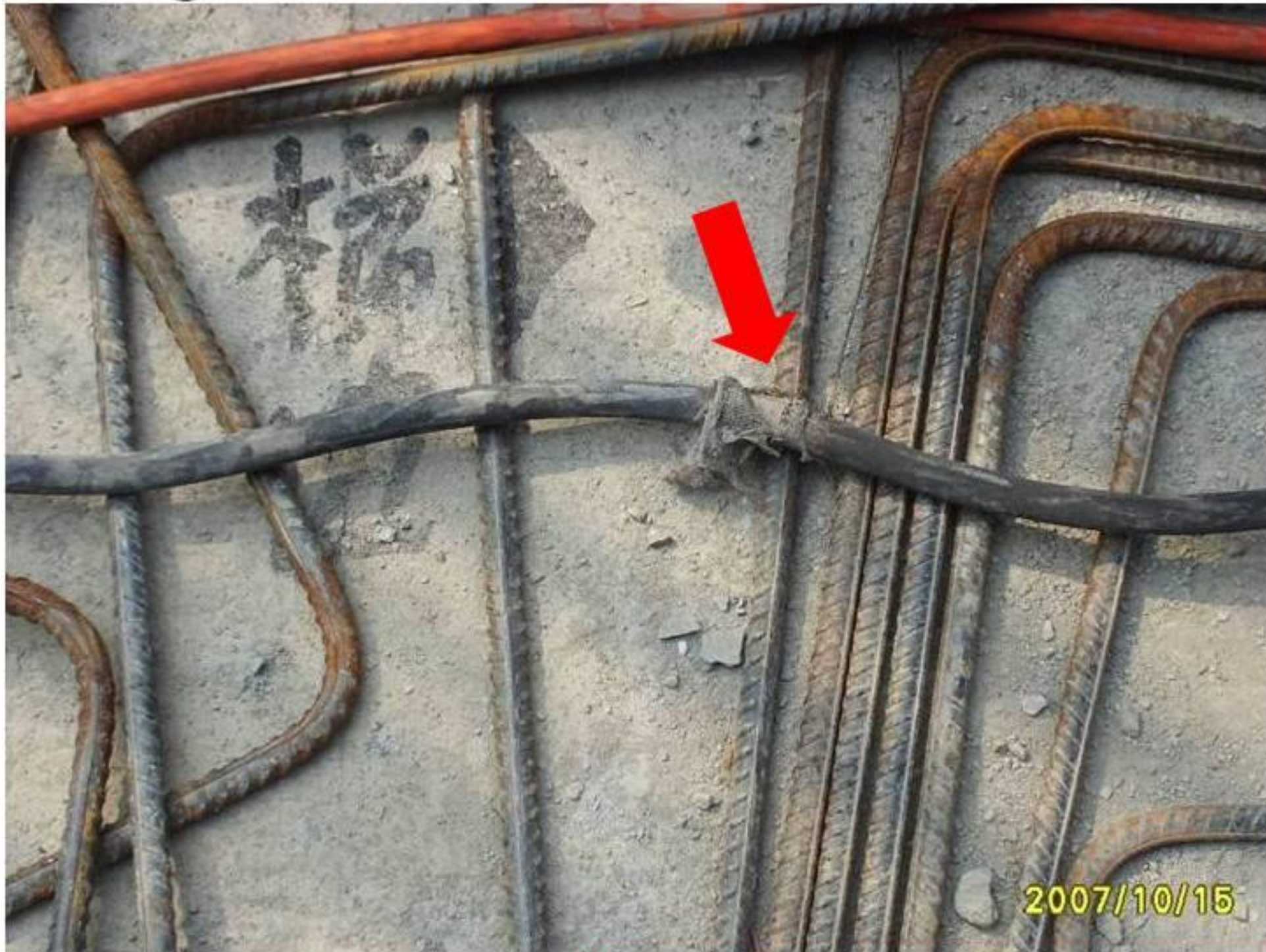
# Electric Cables Lying on Ground immersed in water







# Electric Cables Lying on Ground damaged







# Electric Cables Lying on Ground

cases rectified







# Electric Cables Lying on Ground cases rectified







# Electric Cables Lying on Ground cases rectified







# HOUSEKEEPING





# Housekeeping on Site

## rubbish and timber planks stacked at staircase escape route







# Housekeeping on Site

## improper storage of construction material on access route







# Housekeeping on Site

## improper storage of construction material on access route







# Supports of Scaffolds for Formwork NOT sit on firm / solid ground







# SLOPE WORKS





# Slope Surface improper protection







# Temporary Site Drainage System non-function on slope







# Thank You