

Housing Authority Surprise Safety Inspection Programme (SSIP)

Good & Bad Practices

香港房屋委員會
工地突擊巡查制度

Q2 2013 良好及不良作業



職業安全健康局

OCCUPATIONAL SAFETY & HEALTH COUNCIL



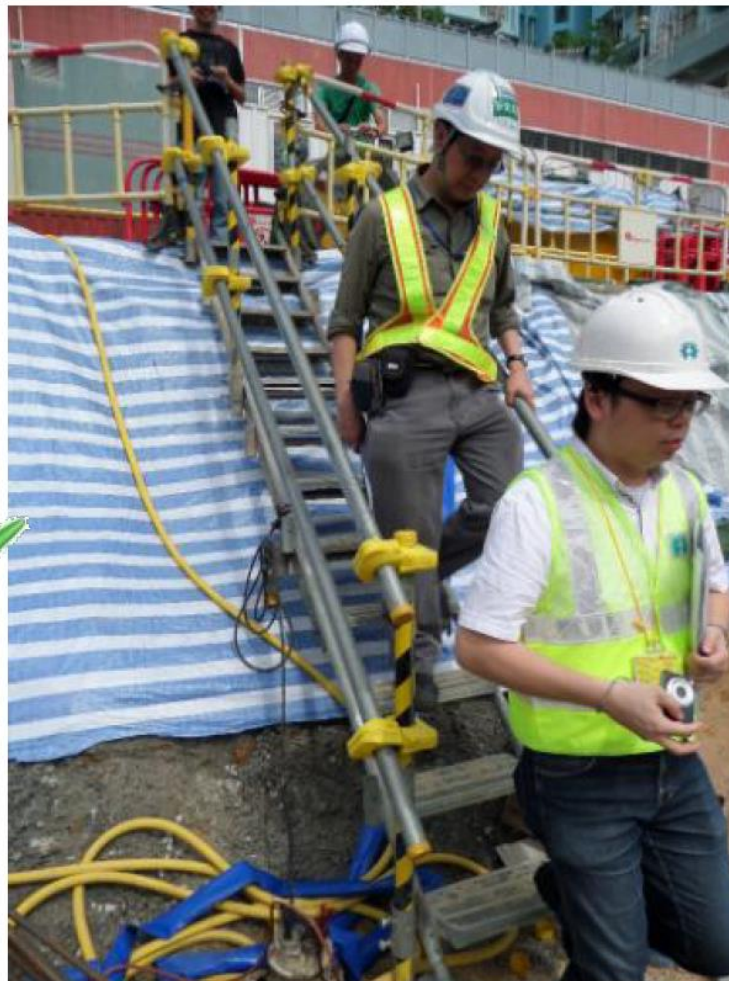
WORKING AT HEIGHT

高空工作

Use of ladder platform with guard-rails for
working at height below 2m
兩米以下高處工作使用有圍欄的梯台



Safe access to excavation 泥坑安全上落途徑



Safe access and egress 安全上落通道



Step platform with fencing 加建圍欄的踏台





PREVENTION OF FALLING OBJECTS

防止高空墜物

Alarm system installed at refuse chute to warn user if someone is using the chute at upper level

如上層有人正使用垃圾槽，垃圾槽開口處之警報器會亮著，以作警告





LIFTING OPERATIONS

吊運作業

Electrical Chain Block has Chinese and English Display of SWL and valid examination and testing certificates

電動鏈條滑車有中英對照安全工作負荷與及貼出有效測試與檢驗證書



Housing Authority Surprise Safety Inspection Programme (SSIP)

Good & Bad Practices

香港房屋委員會
突擊安全巡查計畫

Q3 2013 良好及不良作業



職業安全健康局

OCCUPATIONAL SAFETY & HEALTH COUNCIL

穩固圍欄

Secure guardrails installed

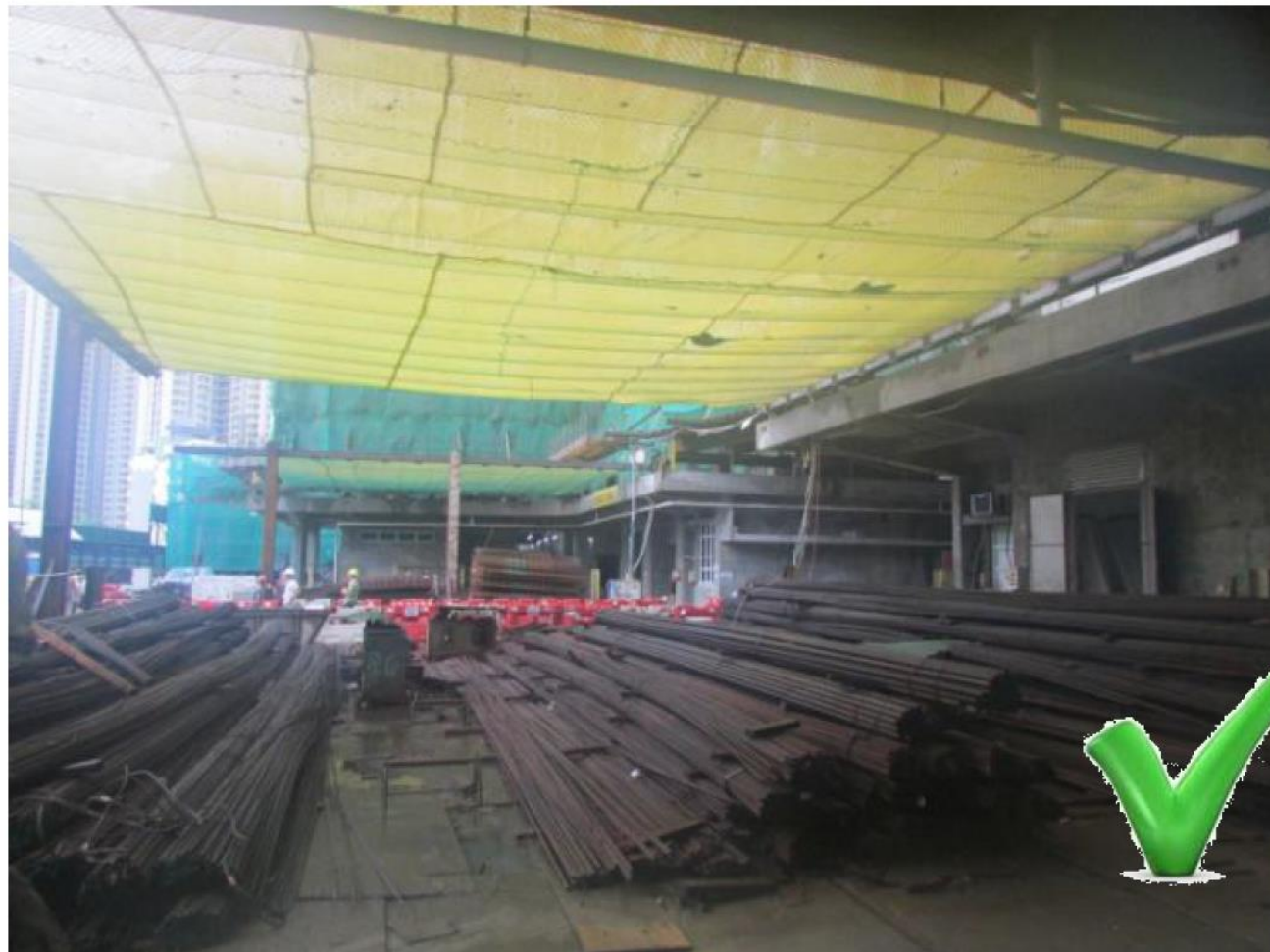


Bicycle lock to secure perimeter fence 以單車鎖鞏固周界圍欄



紮鐵場設置保護網

Bar Bending Area with protective net



推行工作場所整理 5S practices in placed



以楔子阻止圓筒形物料滾動
Apply stopper for circular material



人車分路

Human and Vehicles Demarcation



工作樓層(-1)提供臨時照明及告示

WF (-1) provided with temporary lighting and notice



鋼筋頂部突出部份被覆蓋

Protruding parts of Metal Bars were covered



樓層雨水收集裝置

Rain water collection system



物料分類存放並以標籤識別

Parts classified by types and have clear labelling





END
完