



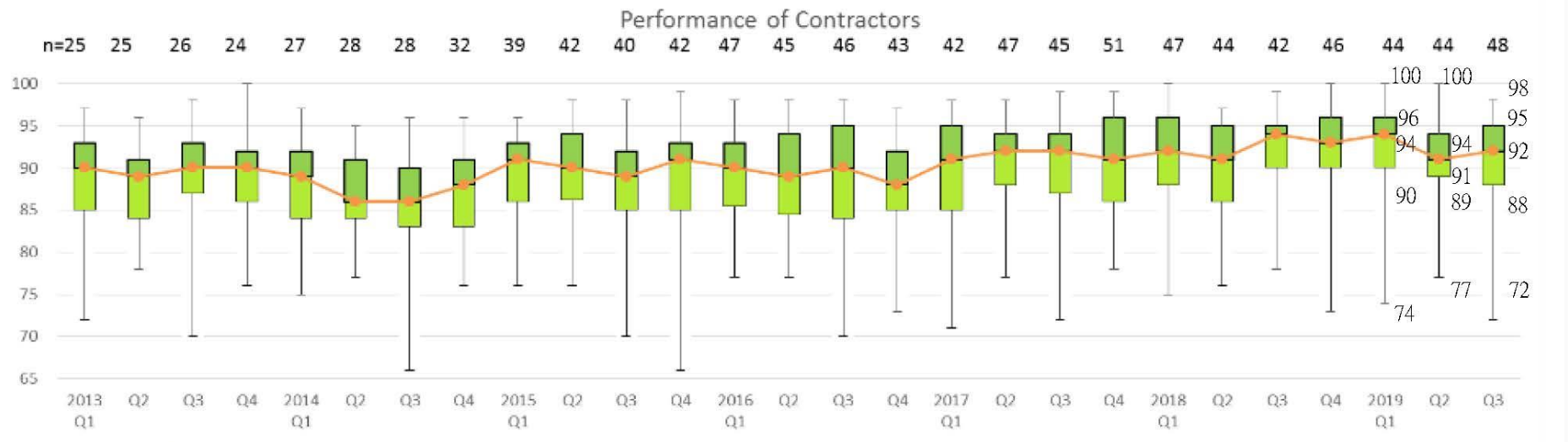
Housing Authority
Surprise Safety Inspection Programme (SSIP)
Good Practices
香港房屋委員會
突擊安全巡查計劃
Q2 & Q3 2019 良好作業



職業安全健康局
OCCUPATIONAL SAFETY & HEALTH COUNCIL

得分一覽

SSIP Median Scores at a Glance





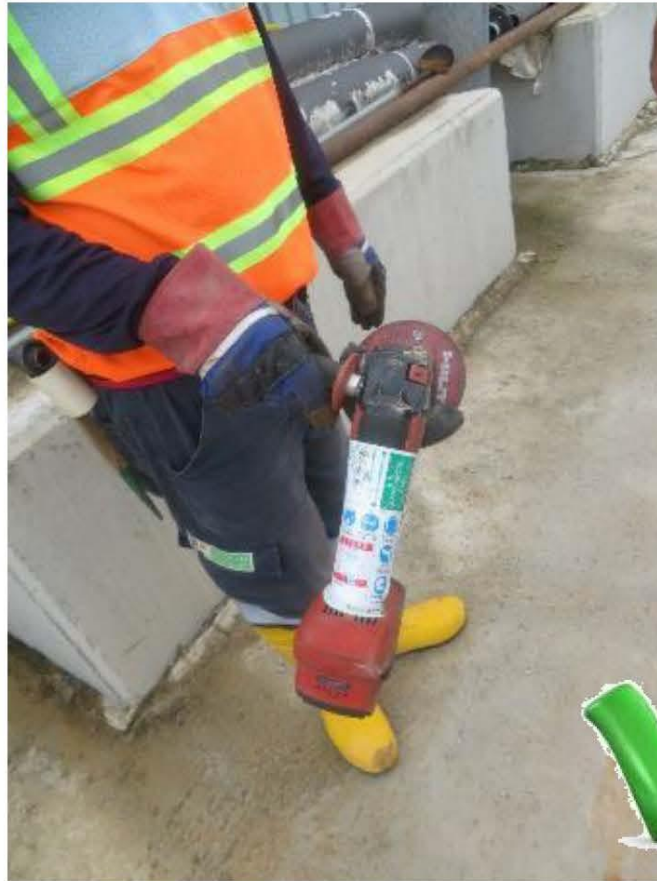
Summary of Good Practices

良好作業摘要

- Good practices were observed in Use of cordless electric portable tool; Provision of electric sockets and connectors of the IP54 protection class; Provision of safe means of access and egress to working area; and Installation of load indicator at tower crane mast.
- 良好作業包括：使用無線電力手提工具；提供符合IP54防護等級電力設備；提供安全進出工作位置的途徑；於天秤架上設置負重警示燈。

根據房屋委員會安全稽核制度1.6的要求使用無線電力手提工具。

As required in HASAS 1.6, the use of a cordless electric portable tool was found.



電力設備符合IP54防護等級。

Sockets and connectors meet the IP54 protection class.



提供安全進出工作位置的方法。

Provide safe means of access and egress to working area.



於天秤架上安裝負重警示燈。

Install load indicator on the tower crane mast.





END
完

Here is the footage of

“Site Safety Seminar for Capital Works New Works Contracts”

which was held on 30 October 2019

by the Hong Kong Housing Authority

The Speaker is

Mr. Henry Cheung

Senior Consultant of Occupational Safety and Health Council

His topic is Surprise Safety Inspection Programme (SSIP)

Finding in Q2 & Q3 2019

Next, we will be sharing on

the past 2 quarters: the 2nd and 3rd quarters of 2019

The findings of our colleagues

when conducting surprise safety inspection on sites

This was an overview of scores

The midpoint score of the 2nd quarter was 91

92 for the 3rd quarter

This was normal

Now, we will look at some good practices

This was a portable rechargeable cordless tool

Most people use electric ones now

Most people prefer cordless tools

To minimise dangers and chances of electric shock

About water resistant and anti-dust grading

Ingress Protection Rating IP54 is adopted by many now

The recharging box on the left, the power distribution board

or extension cord could be tested

It had to be screwed on, could be seen if it was in order by observation

like camera lens extras, have to be screwed on

It could be checked externally whether it was in place

Our colleagues do examine these

This was a hop-up platform

I do not think he used it wrongly but cleverly

This hop-up platform was neither a work platform nor a work tool

This hop-up platform was neither a work platform nor a work tool

It was acceptable to use it for entry and exit

This was very rarely seen

Signage for the safe loading of the tower crane

could be seen at grade as well as on the tower crane mast

showing the meanings of red, yellow and green display

This was a good practice as well

Thank you

Thank you for watching