

Work-at-Height Safety & MEWP Safety Features Introduction

Glenn Ho

Chairman

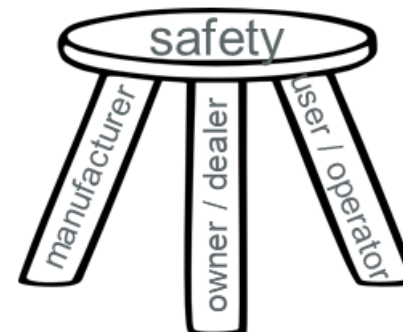
Hong Kong Mobile Aerial
Work Platform Association

28 Apr 2025



Roles & Responsibilities

- Having established and clearly defined responsibilities of all entities involved in Mobile Elevating Work Platforms (MEWP) helps ensure operator safety
 - Manufacturer
 - Owner / Dealer
 - User (Employer) / Operator



Manufacturer's Responsibilities

- Produce safe designs
- Comply with the standard(s)
- Information on safe use
- What does a safe product mean
 - Machines designed to withstand intended use
 - Operator's safety #1



Manufacturer's Responsibilities

How MEWP manufacturer achieves safe designs ...

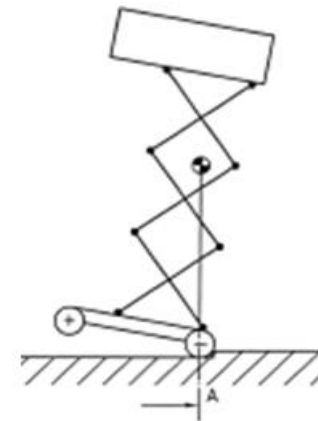
- Know how the product is used
- Design and test machines per the standards
- Goal of standards is to prevent accidents



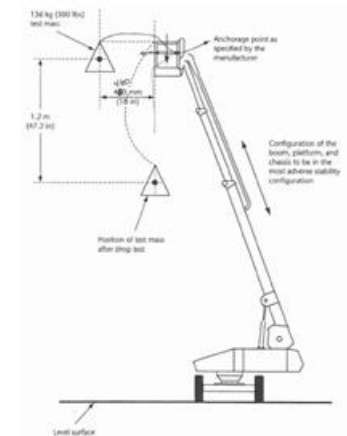
CSA
Group



中华人民共和国国家标准



Curb / Depression Test

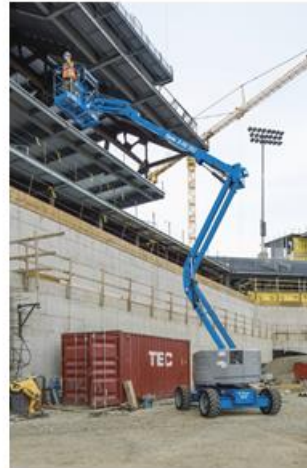


Fall Arrest Overturning Test

Owner / Dealer's Responsibilities



- Perform maintenance / inspections, including mandatory safety notices
- Offer training to users
- Familiarization upon delivery



Review of Manuals: on board / in basket



Review of control functions

Review of safety features specific to model being delivered



User / Operator's Responsibilities



• User

- OSHA defines the user as the employer
- Ensures all operators are properly trained (and familiarized!)
- Directs only authorized personnel to operate MEWPs

Operator

- Has a responsibility to be trained and be familiar with the aerial platform to be operated
- Adheres to the information contained on the MEWP
 - Safety signs
 - Instructions

Safety Features ... Scissors

- **Anti-pinch handrail design** protects operator's hands when sliding out / in the extension deck



- **Diamond plate deck** provides superior slip resistance during operation

- **Safety arm** protects service staff from link stack incidental falling while performing repair or maintenance



- **Load sense system** detects real-time payload on platform and alerts when overloaded

- **Descent alarm** calls attention when platform is lowering in either platform mode or ground control mode

- **Motion lockout while charging** cuts off driving function when charging the batteries

- **Pothole protection** ensures driving safety

Safety Features ... Booms



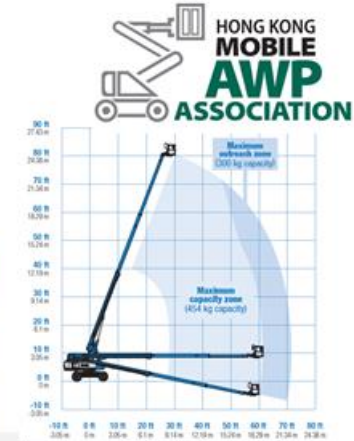
- **Drive Enable** (toggle switch) reminds operator to double confirm the driving direction (forward or backward) when the turntable rotates



- **Contact alarm** stops boom functions and alerts ground personnel when an operator makes contact with the activation cable



- **Load sense system** detects the payload on platform in real time and triggers alarm when overloaded. It also enables XC (extra capacity) machines to achieve automatic envelope control



- **Active oscillating axle** ensures four-wheel contact with ground while driving, providing superior operation experience and safety

- **Auxiliary power unit** enables ground personnel to get operator on platform back to ground or a safer position in case that the normal operation system doesn't function

Safety Enhancement Options ... 1/3



Auxiliary Rail

The auxiliary top rail platform accessory is an additional railing system that can be quickly and easily mounted on the outside of a Genie boom's standard platform rails. This railing system adds an extra measure of security for the operator when working at height.



Fall Arrest Bar

The Genie Fall Arrest Bar has a sliding track, which is designed to allow the operator to be anchored with a fall arrest lanyard while providing them the ability to move freely on an adjacent structure while outside of the platform. Attaches quickly and easily for fast setup and removal. Track assembly de-rates the maximum platform capacity by 50 lb (22.68 kg).

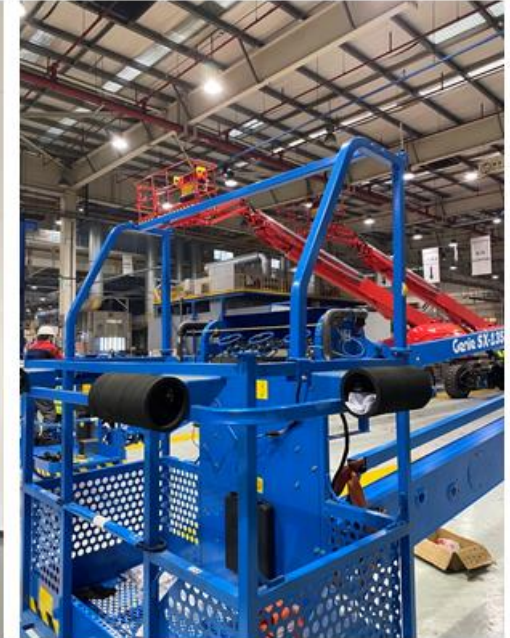


Operator Protective Structure (OPS)

Bolting directly to the platform, this secondary guarding device helps provide additional protection to the operator from overhead obstacles on a work site. The Genie OPS is made of high strength tubular steel and allows for excellent visibility and work range.

Safety Enhancement Options ... 2/3

Secondary Guarding System (Ultrasonic, Whiskers and Overhead Operator Protection Structure)



Safety Enhancement Options ... 3/3

Wind Speed Monitoring System



Remote Control System



Zone Light



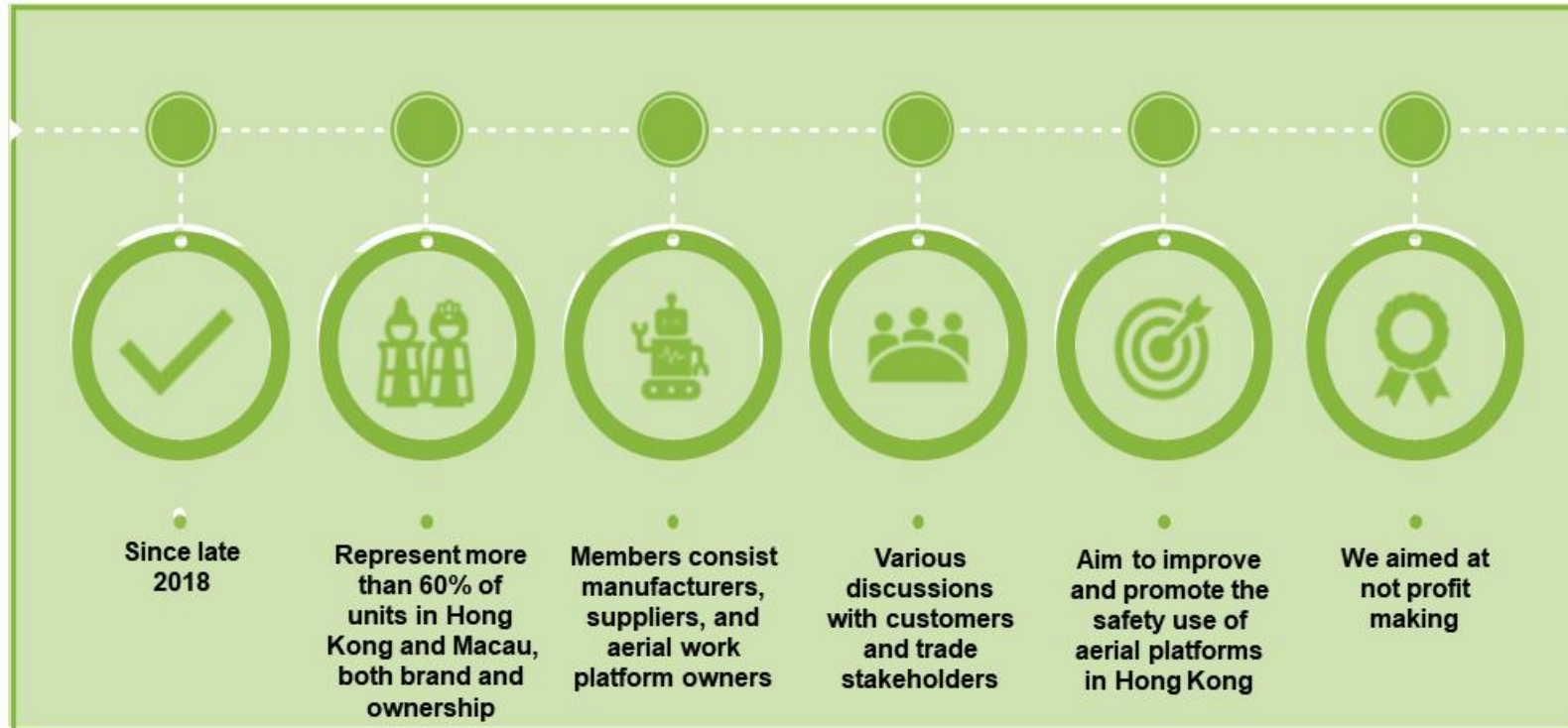
Operation and Safety Training for MEWP

Hong Kong Mobile Aerial Work Platform association

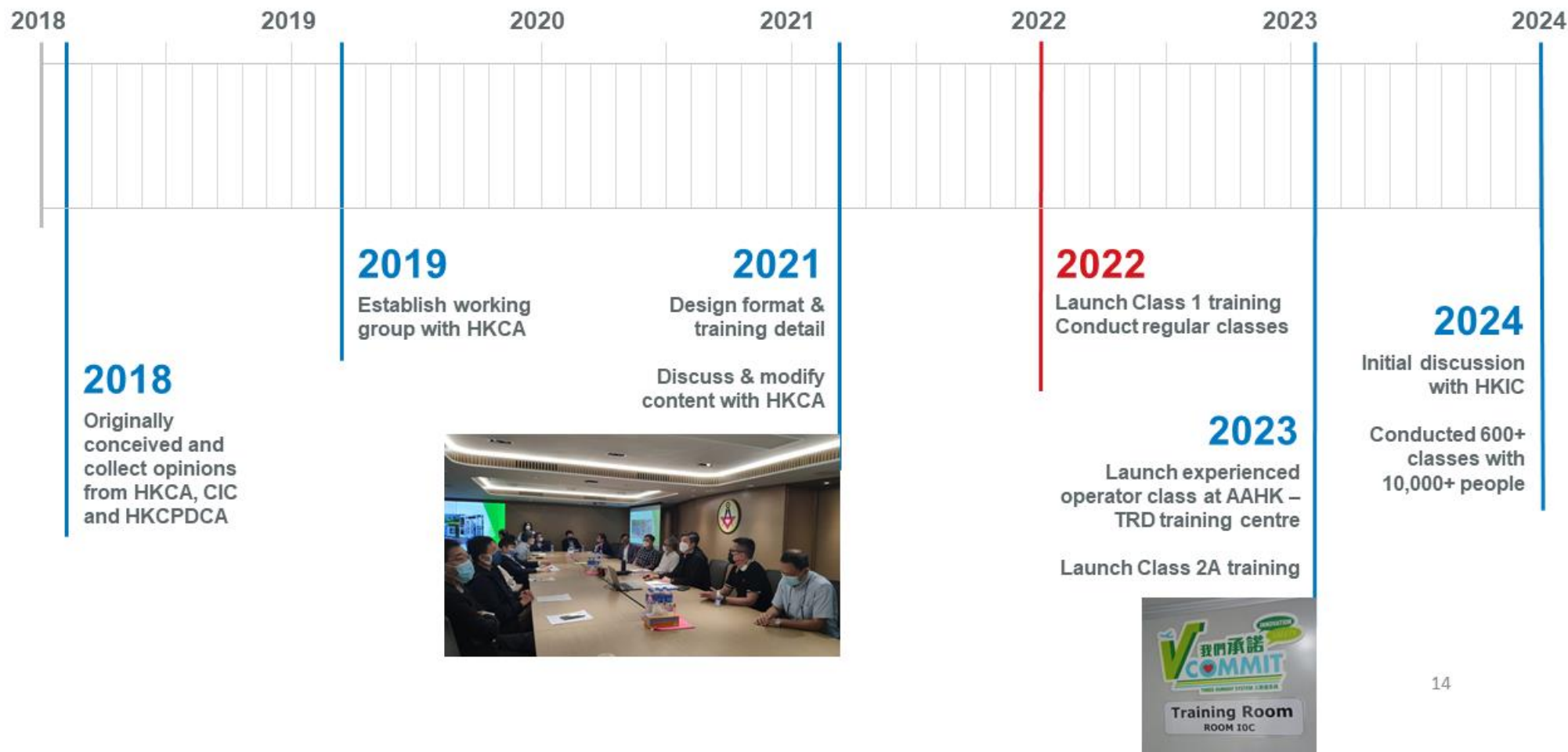


三跑道系統
Three Runway System
「我們承諾」推廣計劃
"YCommit" Safety Promotion Programme

HK Mobile AWP Association

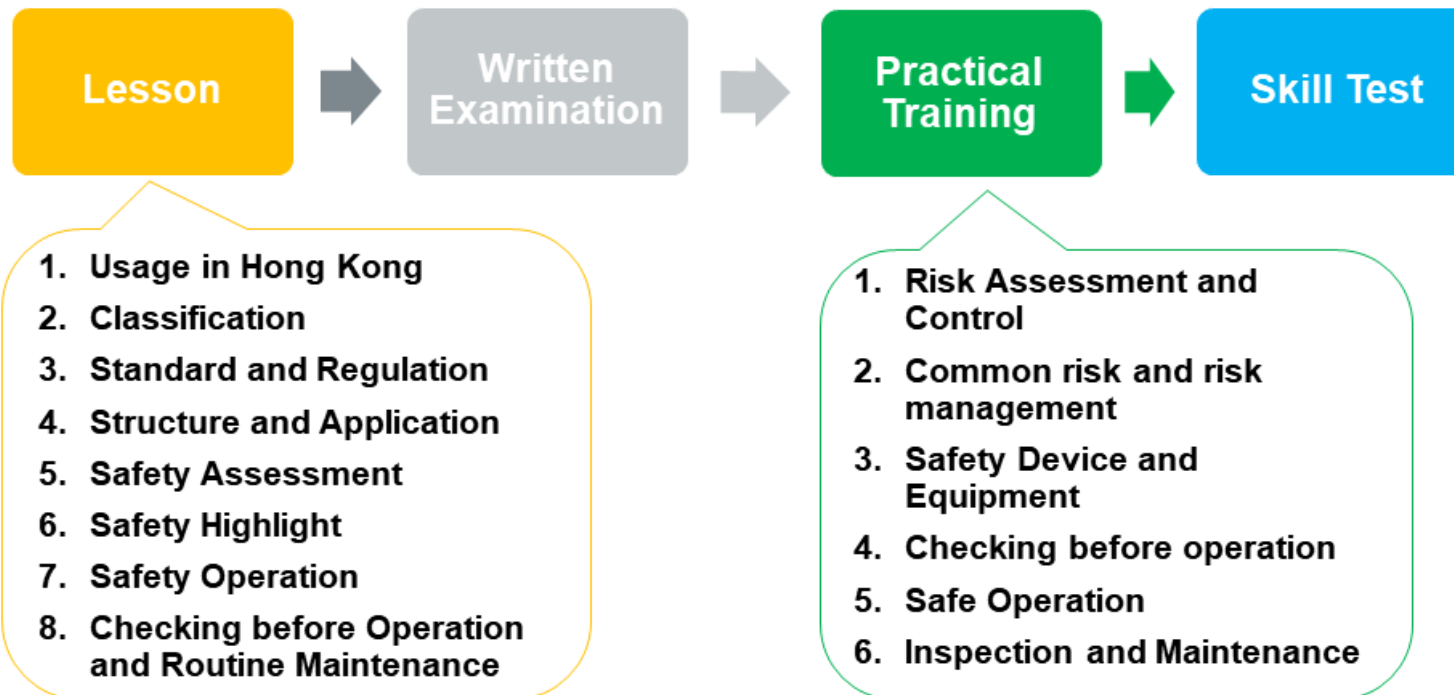


Roadmap of MEWP Training Course



Training Course Structure

Standardized Mobile Elevated Working Platform Training Course





Full Day Programme

- Background of Aerial Platform safety training
- Categorization of Aerial Platforms
- Laws, Regulations, and Standards
- General introduction to Class 1 Type Aerial Platforms
- Different types and characteristics of Class 1
- Safety equipment
- Risk assessment and mitigation
- Inspections and Maintenance
- Safety Operation

Half Day Programme (Experienced Operator)

- Categorizing
- Standards and legislation
- Structures and applications
- Assessment of work environment
- Safety features
- Pre-operation inspections and regular maintenance



Practical

- Walk around inspection
- Functional test
- Safety operation



MEWP Training

- Classes on different machine types
- 6 standardized centres
- Standardized bilingual classes Lecture, Practical, and Tests
- 1 day course with 5 years validity including Safety Operation, Inspection, simple maintenance



MEWP Training Form

Name: _____

Mobile AWP Association

1. Which of the following is NOT a safety rule?

1. Do not use the platform as a ladder.
2. Do not use the platform as a work platform.
3. Do not use the platform as a storage area.
4. Do not use the platform as a work platform.

2. Which of the following is NOT a safety rule?

1. Do not use the platform as a ladder.
2. Do not use the platform as a work platform.
3. Do not use the platform as a storage area.
4. Do not use the platform as a work platform.

3. Which of the following is NOT a safety rule?

1. Do not use the platform as a ladder.
2. Do not use the platform as a work platform.
3. Do not use the platform as a storage area.
4. Do not use the platform as a work platform.

4. Which of the following is NOT a safety rule?

1. Do not use the platform as a ladder.
2. Do not use the platform as a work platform.
3. Do not use the platform as a storage area.
4. Do not use the platform as a work platform.



Mobile AWP Association

1. Which of the following is NOT a safety rule?

1. Do not use the platform as a ladder.
2. Do not use the platform as a work platform.
3. Do not use the platform as a storage area.
4. Do not use the platform as a work platform.

2. Which of the following is NOT a safety rule?

1. Do not use the platform as a ladder.
2. Do not use the platform as a work platform.
3. Do not use the platform as a storage area.
4. Do not use the platform as a work platform.

3. Which of the following is NOT a safety rule?

1. Do not use the platform as a ladder.
2. Do not use the platform as a work platform.
3. Do not use the platform as a storage area.
4. Do not use the platform as a work platform.

4. Which of the following is NOT a safety rule?

1. Do not use the platform as a ladder.
2. Do not use the platform as a work platform.
3. Do not use the platform as a storage area.
4. Do not use the platform as a work platform.

